

Instrument #: 2026-1713
 06/11/2026 11:04:51 AM Total Pages: 1
 ZSC SECTION CORNER CERTIFICATE
 Recording Fee: \$7.00 Transfer Tax: \$0
 Sheri L. Jones, Recorder, Jones County Iowa



PREPARED BY

KEVIN F. BRADSHAW, BRAIN ENGINEERING, INC., 1540 MIDLAND COURT NE, CEDAR RAPIDS, IOWA PH. (319) 294-9424

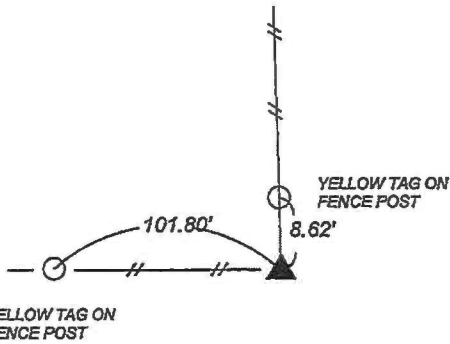
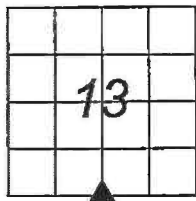
UNITED STATES PUBLIC LAND SURVEY CORNER CERTIFICATE

LAND SURVEY MONUMENTS SITUATED IN SECTION 13, TOWNSHIP 85 NORTH
 RANGE 3 WEST OF THE 5TH P.M., JONES COUNTY, IOWA.

NO SCALE



S 1/4 CORNER



NORTHING: 3532013.07
 EASTING: 5560752.94

PREVIOUSLY RECORDED IN BOOK _____ PAGE _____

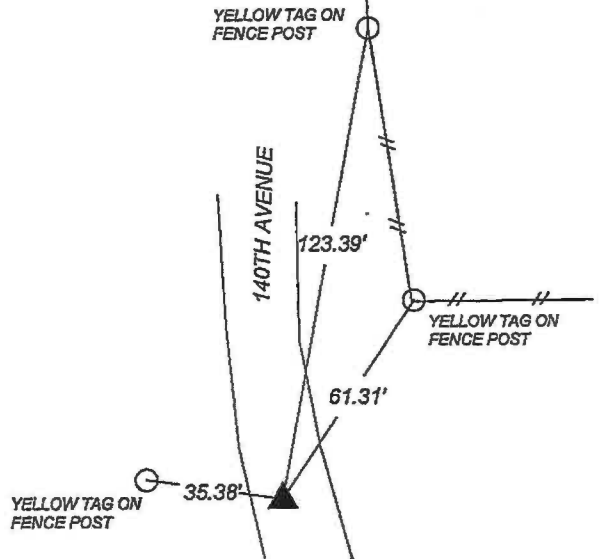
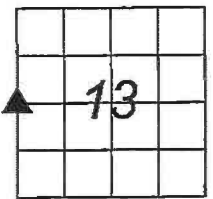
MONUMENT DESCRIPTION AND HOW ESTABLISHED _____

FOUND IDOT TYPE RAIL IN CONCRETE AS CORNER POST. USED AS SECTION CORNER COORDINATES SHOWN ARE IOWA STATE PLANE, NAD83 DATUM.

NO SCALE



W 1/4 CORNER



PREVIOUSLY RECORDED AS DOCUMENT #98990028

MONUMENT DESCRIPTION AND HOW ESTABLISHED _____

SET 1/2" REBAR WITH YELLOW CAP #17543 FROM REMAINING RECORDED TIES AND DISTANCES FROM PLAT OF PARCEL 2003-06



I hereby certify that this land surveying document and the related survey work was performed by me or under my direct personal supervision and that I am a duly licensed Land Surveyor under the laws of the State of Iowa.

Signed Kevin F. Bradshaw Date 6-09-26
 Kevin F. Bradshaw, L.S.
 My License Renewal Date is December 31, 2026
 License Number 17543
 Pages or sheets covered by this seal: 1/1

- A. THERE IS NO CERTIFICATE FOR THE CORNER ON FILE WITH THE RECORDER OF THE COUNTY IN WHICH THE CORNER IS LOCATED
- B. THE SURVEYOR IN RESPONSIBLE CHARGE OF THE LAND SURVEYING ACCEPTS A CORNER POSITION WHICH DIFFERS FROM THAT SHOWN IN THE PUBLIC RECORDS OF THE COUNTY IN WHICH THE CORNER IS LOCATED.
- C. THE CORNER MONUMENT IS REPLACED OR MODIFIED IN ANY WAY.
- D. THE REFERENCE TIES REFERRED TO IN AN EXISTING PUBLIC RECORD ARE NOT CORRECT.

CORNERS TO BE INDEXED

CORNER	SECTION	TOWNSHIP	RANGE
S 1/4 CORNER	13	T85N	R3 W
W 1/4 CORNER	13	T85N	R3 W

BRAIN ENGINEERING, INC.
 1540 MIDLAND COURT NE
 CEDAR RAPIDS, IOWA 52402
 (319) 294-9424

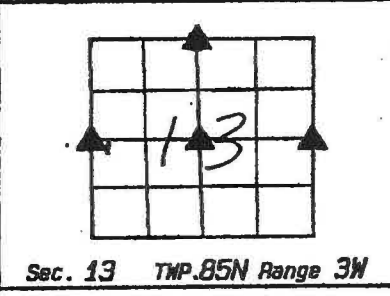
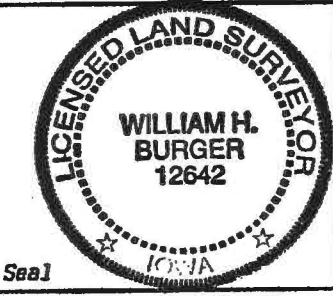
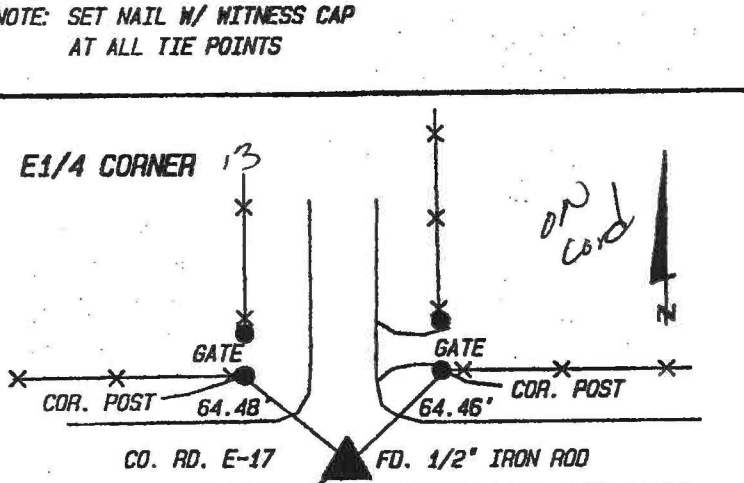
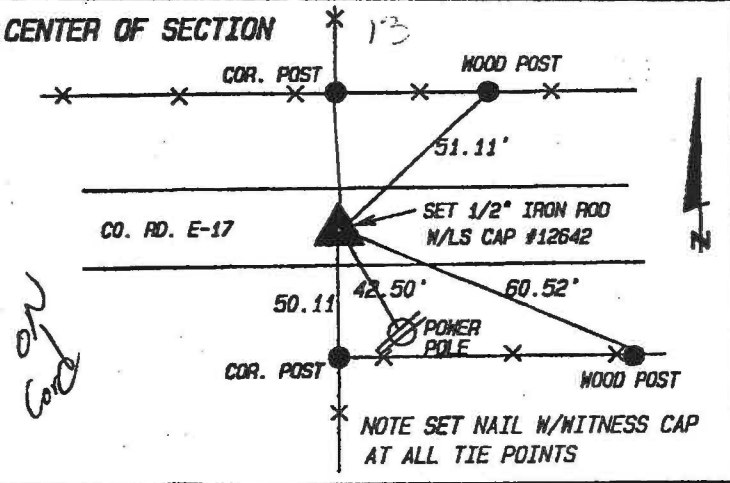
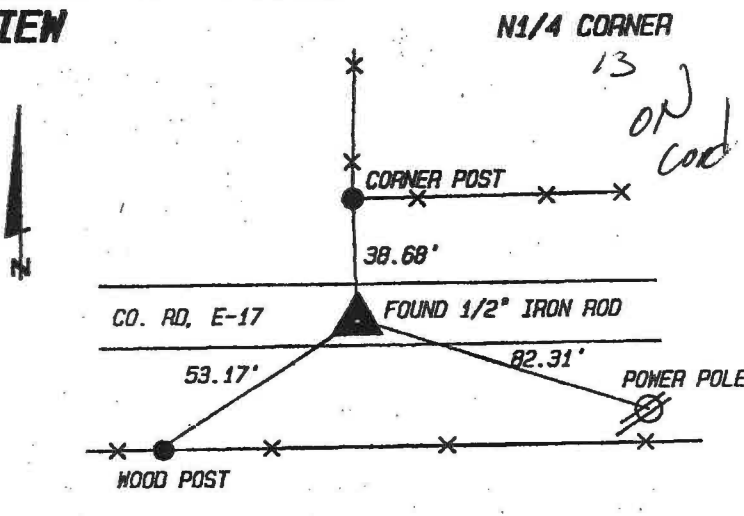
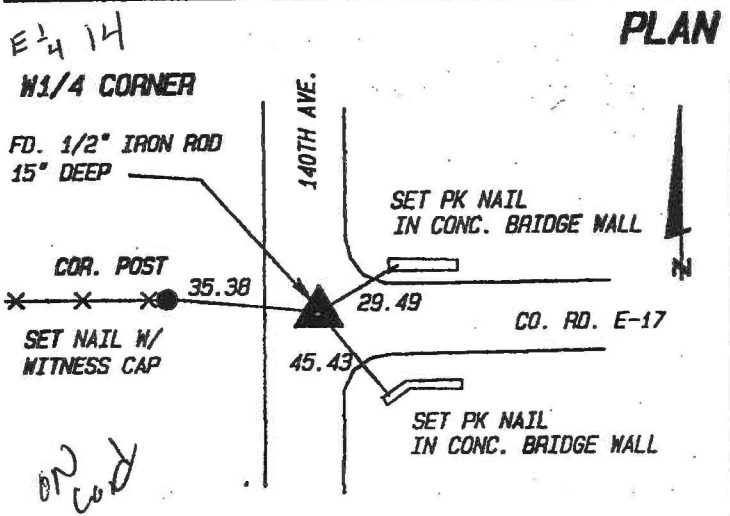
284926-35

UNITED STATES PUBLIC LAND SURVEY CORNER CERTIFICATE

LAND SURVEY MONUMENT SITUATED IN SECTION 13, TOWNSHIP 85N, RANGE 3W, OF THE FIFTH PRINCIPAL MERIDIAN, JONES COUNTY, IOWA. PREVIOUSLY RECORDED IN NA IN COUNTY RECORDER'S OFFICE

MONUMENT DESCRIPTION AND REMARKS: (NO CORNER CERTIFICATES FOUND AT THE COUNTY RECORDERS OFFICE)

N1/4 CORNER	FOUND 1/2" IRON ROD
E1/4 CORNER	FOUND 1/2" IRON ROD
W1/4 CORNER	FOUND 1/2" IRON ROD 15" DEEP
CENTER OF SECTION	SET 1/2" IRON ROD W/LS CAP #12642 -- RUN STRAIGHT LINES FROM OPPOSITE 1/4 CORNERS



I hereby certify that this land surveying document was prepared and related survey work was performed by me or under my direct personal supervision and that I am a duly licensed Land Surveyor under the laws of the State of Iowa.

William H. Burger 6/25/98
 William H. Burger Date
 License number 12642
 My license renewal date is December 31, 1998
 Pages or Sheet covered by this seal: Sheet 1 of 1

CORNERS TO BE INDEXED

CORNER	SECTION	TWP.	RANGE
N1/4	13	85N	3W
E1/4	13	85N	3W
W1/4	13	85N	3W
CENTER	13	85N	3W