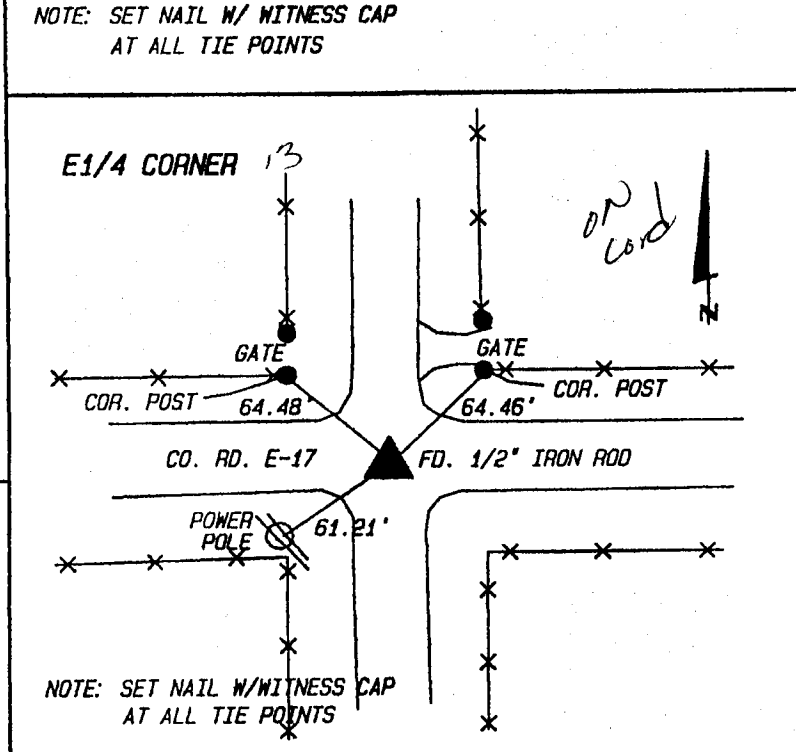
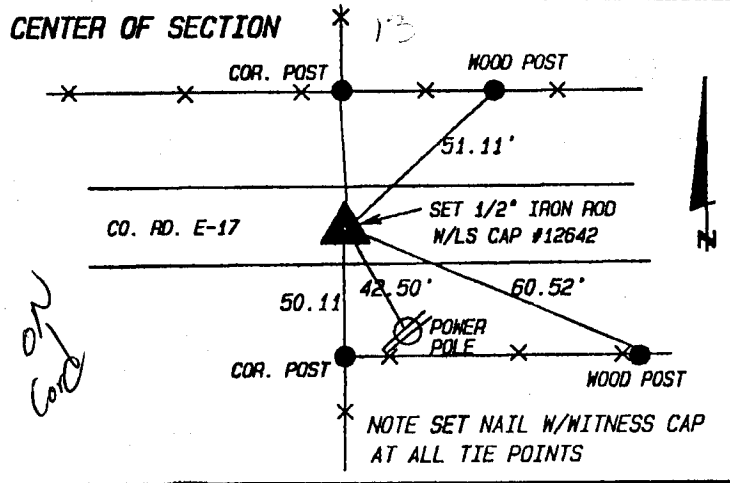
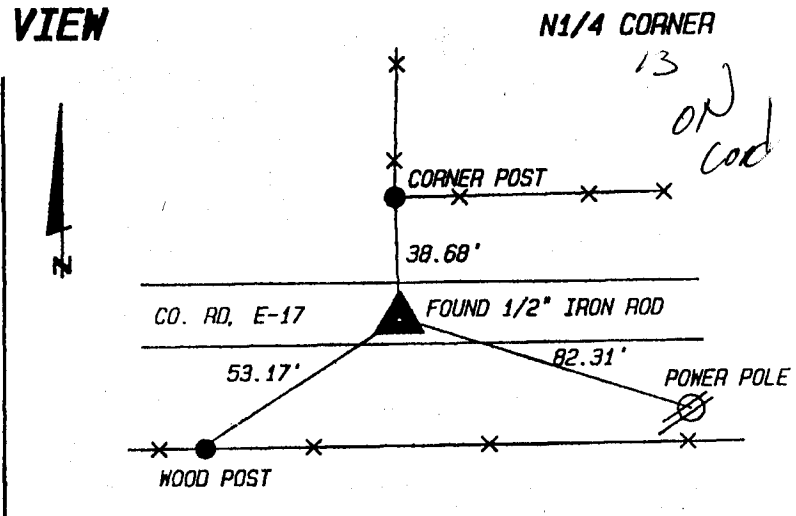
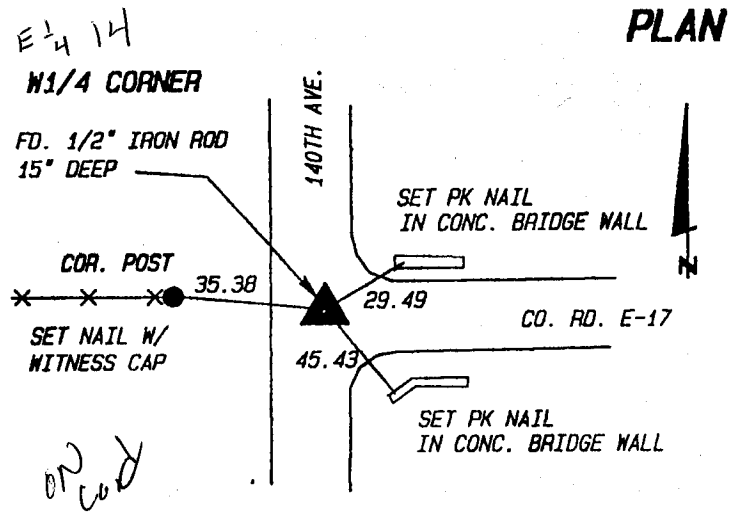


UNITED STATES PUBLIC LAND SURVEY CORNER CERTIFICATE

LAND SURVEY MONUMENT SITUATED IN SECTION 13, TOWNSHIP 85N, RANGE 3W, OF THE FIFTH PRINCIPAL MERIDIAN, JONES COUNTY, IOWA. PREVIOUSLY RECORDED IN NA IN COUNTY RECORDER'S OFFICE

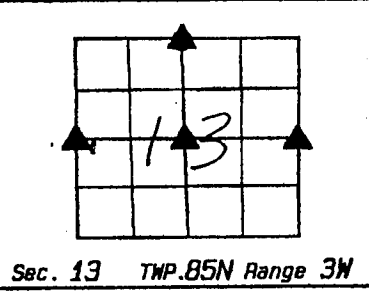
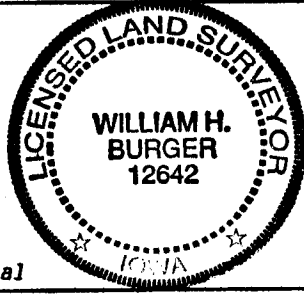
MONUMENT DESCRIPTION AND REMARKS: (NO CORNER CERTIFICATES FOUND AT THE COUNTY RECORDERS OFFICE)

N1/4 CORNER	FOUND 1/2" IRON ROD
E1/4 CORNER	FOUND 1/2" IRON ROD
W1/4 CORNER	FOUND 1/2" IRON ROD 15" DEEP
CENTER OF SECTION	SET 1/2" IRON ROD W/LS CAP #12642 -- RUN STRAIGHT LINES FROM OPPOSITE 1/4 CORNERS



NOTE: SET NAIL W/ WITNESS CAP AT ALL TIE POINTS

NOTE: SET NAIL W/ WITNESS CAP AT ALL TIE POINTS



I hereby certify that this land surveying document was prepared and related survey work was performed by me or under my direct personal supervision and that I am a duly licensed Land Surveyor under the laws of the State of Iowa.

William H. Burger 6/25/98
 William H. Burger Date
 License number 12642
 My license renewal date is December 31, 1998
 Pages or Sheet covered by this seal: Sheet 1 of 1

CORNERS TO BE INDEXED

CORNER	SECTION	TWP.	RANGE
N1/4	13	85N	3W
E1/4	13	85N	3W
W1/4	13	85N	3W
CENTER	13	85N	3W