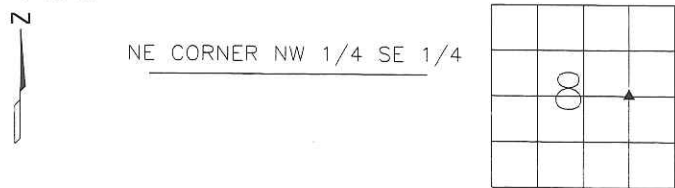


PREPARED BY
 STEPHEN MICHAEL BRAIN, BRAIN ENGINEERING, INC., 1540 MIDLAND COURT NE, CEDAR RAPIDS, IOWA PH. (319) 294-9424

UNITED STATES PUBLIC LAND SURVEY CORNER CERTIFICATE

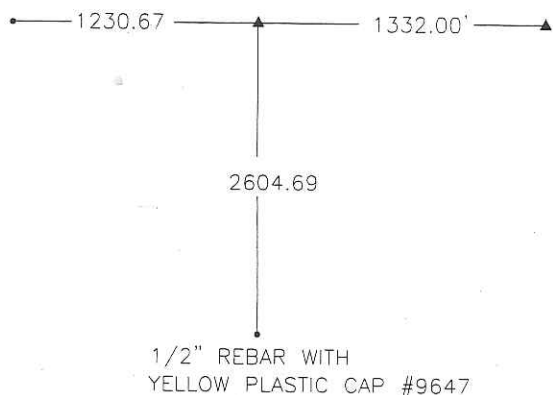
LAND SURVEY MONUMENTS SITUATED IN SECTION 8, TOWNSHIP 85 NORTH
 RANGE 3 WEST OF THE 5TH P.M., JONES COUNTY, IOWA.

NO SCALE



1/2" REBAR WITH
 YELLOW PLASTIC CAP #9647

E 1/4 CORNER
 FOUND
 CONCRETE MONUMENT



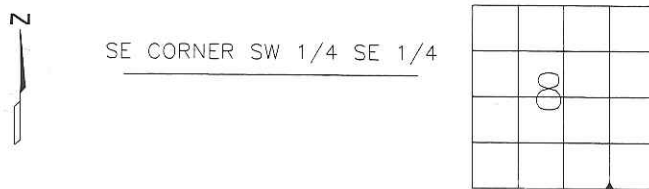
1/2" REBAR WITH
 YELLOW PLASTIC CAP #9647

ALL TIES
 SET RED HEAD NAIL
 IN STEEL FENCE POST

PREVIOUSLY RECORDED IN BOOK _____ PAGE _____

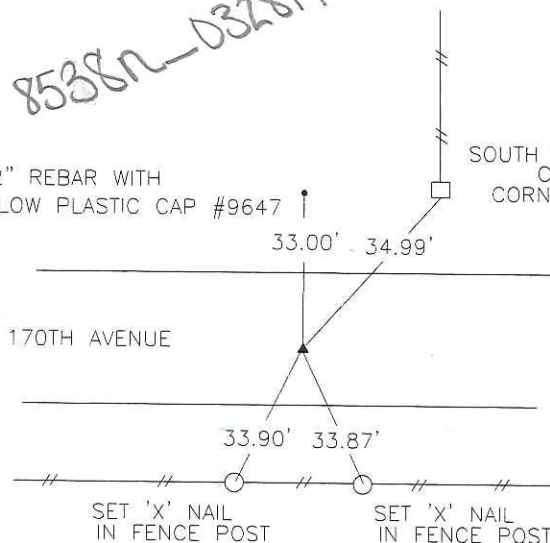
MONUMENT DESCRIPTION AND HOW ESTABLISHED _____
 SET 1/2" REBAR WITH YELLOW PLASTIC CAP #9647 AT THE
 MIDPOINT ON THE LINE BETWEEN THE CENTER AND E 1/4
 CORNER OF SECTION 8-85-3. THE CENTER WAS
 CALCULATED AT THE INTERSECTION OF THE 4 1/4 CORNERS
 BUT NOT SET.

NO SCALE



1/2" REBAR WITH
 YELLOW PLASTIC CAP #9647

SOUTH FACE OF
 CONCRETE
 CORNER POST



170TH AVENUE

SET 'X' NAIL
 IN FENCE POST

SET 'X' NAIL
 IN FENCE POST

PREVIOUSLY RECORDED IN BOOK _____ PAGE _____

MONUMENT DESCRIPTION AND HOW ESTABLISHED _____
 SET 1/2" REBAR WITH YELLOW PLASTIC CAP #9647 AT THE
 MIDPOINT ON THE LINE BETWEEN THE S 1/4 CORNER AND SE
 CORNER OF SECTION 8-85-3.



I hereby certify that this land surveying document
 and the related survey work was performed by me
 or under my direct personal supervision and that
 I am a duly licensed Land Surveyor under the laws
 of the State of Iowa.
 Signed _____ Date 3/28/14

Stephen Michael Brain, L.S.
 My License Renewal Date Is December 31, 2014
 License Number 9647
 Pages or sheets covered by this seal: 1/1

- A. THERE IS NO CERTIFICATE FOR THE CORNER ON FILE WITH THE RECORDER OF THE COUNTY IN WHICH THE CORNER IS LOCATED
- B. THE SURVEYOR IN RESPONSIBLE CHARGE OF THE LAND SURVEYING ACCEPTS A CORNER POSITION WHICH DIFFERS FROM THAT SHOWN IN THE PUBLIC RECORDS OF THE COUNTY IN WHICH THE CORNER IS LOCATED.
- C. THE CORNER MONUMENT IS REPLACED OR MODIFIED IN ANY WAY.
- D. THE REFERENCE TIES REFERRED TO IN AN EXISTING PUBLIC RECORD ARE NOT CORRECT.

CORNERS TO BE INDEXED			
CORNER	SECTION	TOWNSHIP	RANGE
NE CORNER	8	T85N	R3 W
NW 1/4 SE 1/4	8	T85N	R3 W
SE CORNER	8	T85N	R3 W
SW 1/4 SE 1/4	8	T85N	R3 W

BRAIN ENGINEERING, INC.
 1540 MIDLAND COURT NE
 CEDAR RAPIDS, IOWA 52402
 (319) 294-9424

284914-15

V SWS