

E

UNITED STATES PUBLIC LAND SURVEY CORNER CERTIFICATE OF

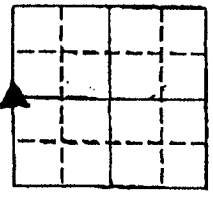
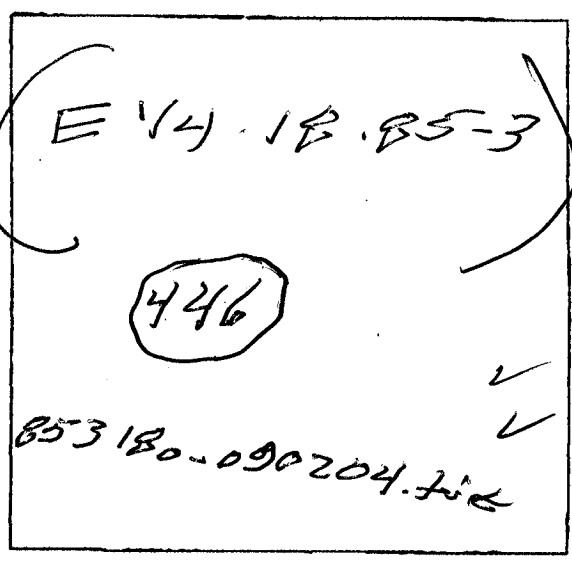
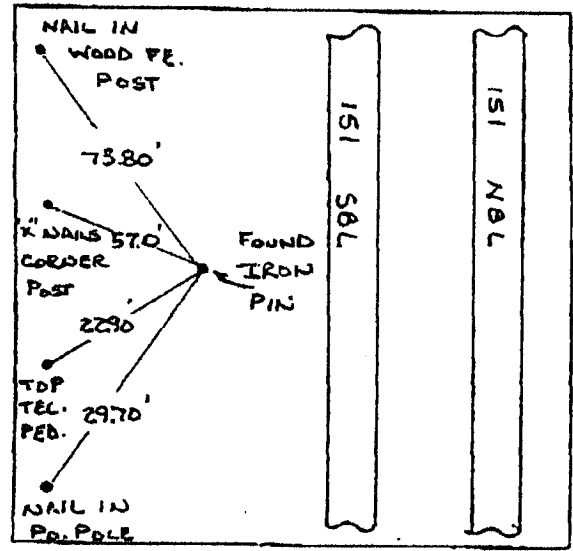
LAND SURVEY MONUMENTS SITUATED IN SECTION 17, TOWNSHIP 85, RANGE 3W, OF THE 5TH PRINCIPAL MERIDIAN JONES COUNTY IOWA PREVIOUSLY RECORDED IN _____ IN COUNTY RECORDER'S OFFICE.

(Show reason for preparing this certificate, the evidence and detailed procedures used in establishing the corner positions and monumentation found or placed.)

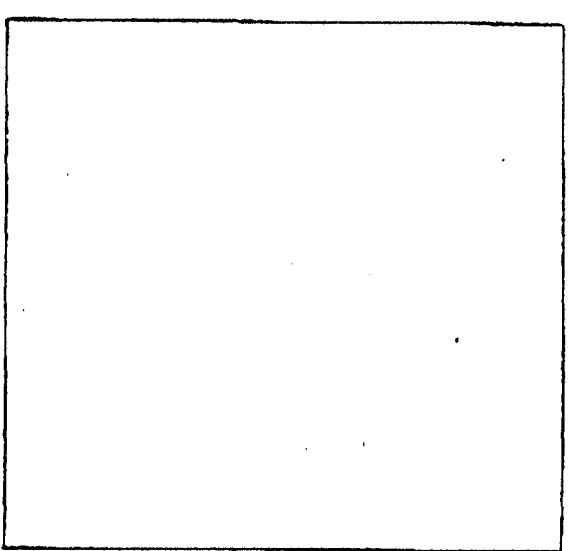
MONUMENT DESCRIPTION AND REMARKS: W 1/4 CORNER SEC. 17-85-3W
FOUND IRON PIN

PLAN - VIEW

(Show a minimum of three reference uses to durable physical objects, relevant monuments and physical conditions that will enable recovery of the corner.)



ALL DISTANCES
SLOPE CHAINED



I hereby certify that the survey work was completed and this certificate was prepared by me or under my direct personal supervision and that I am a duly registered land surveyor under the laws of the state of Iowa.

LAND CORNERS TO BE RECORDED			
Corners	Section	Twp.	Range
W 1/4	17	85	3W

Signature: _____

MANCHESTER CONST

09/02/04 THU 16:15 FAX 319 927 2474

FROM IDOT
9.02.04

2004 2470

FILED
RECORDERS OFFICE
JONES COUNTY IOWA

04 JUL -2 PM 2:07

D

MARIE KRUTZFIELD 7.00 pd

J.D. TJEPKES, LS. 14807, 23428 RIDGE ROAD, ANAMOSA, IOWA 52205 (319-462-6067)

UNITED STATES PUBLIC LAND SURVEY CORNER CERTIFICATE

LAND SURVEY MONUMENTS SITUATED IN SECTION 17, TOWNSHIP 85
NORTH, RANGE 3 WEST OF THE 5TH P.M., JONES COUNTY, IOWA

CORNERS TO BE INDEXED

CORNER	SECTION	TOWNSHIP	RANGE
SW COR.	17	85N	3W

OFFICE FILE NO. _____

PREVIOUSLY RECORDED IN BOOK 1999, PAGE 0330
 MONUMENT DESCRIPTION AND HOW ESTABLISHED
 PER PLAT OF SURVEY ON FILE AT JONES CO. RECORDERS OFFICE IN PLAT BK "K" P 87 & TIES FILED BY LS#8505(FAGLE) BEFORE NEW CONSTRUCTION ON #151, PLACED CUT "X" ON EAST SIDE OF SOUTH BOUND LANE. TIES AS INDICATED FOR SW CORNER SECTION 17 T85N R3W.

CORNERS TO BE INDEXED

CORNER	SECTION	TOWNSHIP	RANGE
W1/4 COR.	17	85N	3W

OFFICE FILE NO. _____

PREVIOUSLY RECORDED IN BOOK 1999, PAGE 0330
 MONUMENT DESCRIPTION AND HOW ESTABLISHED
 PER TIES & PLAT ON FILE AT JONES CO. RECORDERS OFFICE IN PLAT BK "K" P 87 BY LS FAGLE, SET 5/8"x24" REBAR W/YELLOW CAP # 14807 3" ABOVE GROUND. TIES AS INDICATED FOR W1/4 CORNER SECTION 17 T85N R3W.

CORNERS TO BE INDEXED

CORNER	SECTION	TOWNSHIP	RANGE

OFFICE FILE NO. _____

PREVIOUSLY RECORDED IN BOOK _____, PAGE _____
 MONUMENT DESCRIPTION AND HOW ESTABLISHED _____

CORNERS TO BE INDEXED

CORNER	SECTION	TOWNSHIP	RANGE

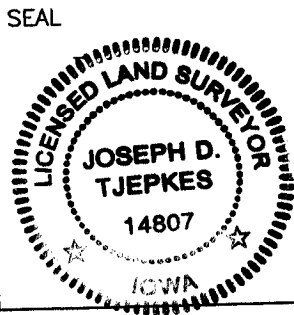
OFFICE FILE NO. _____

PREVIOUSLY RECORDED IN BOOK _____, PAGE _____
 MONUMENT DESCRIPTION AND HOW ESTABLISHED _____

I hereby declare that this plat, survey or report was made by me or under my direct personal supervision and that I am a duly registered Land Surveyor under the laws of the State of Iowa.

Signed: [Signature] 7.02.04

Joseph D. Tjepkes L.S. Iowa Reg. No. 14807
My Registration Renewal Date is December 31, 2004



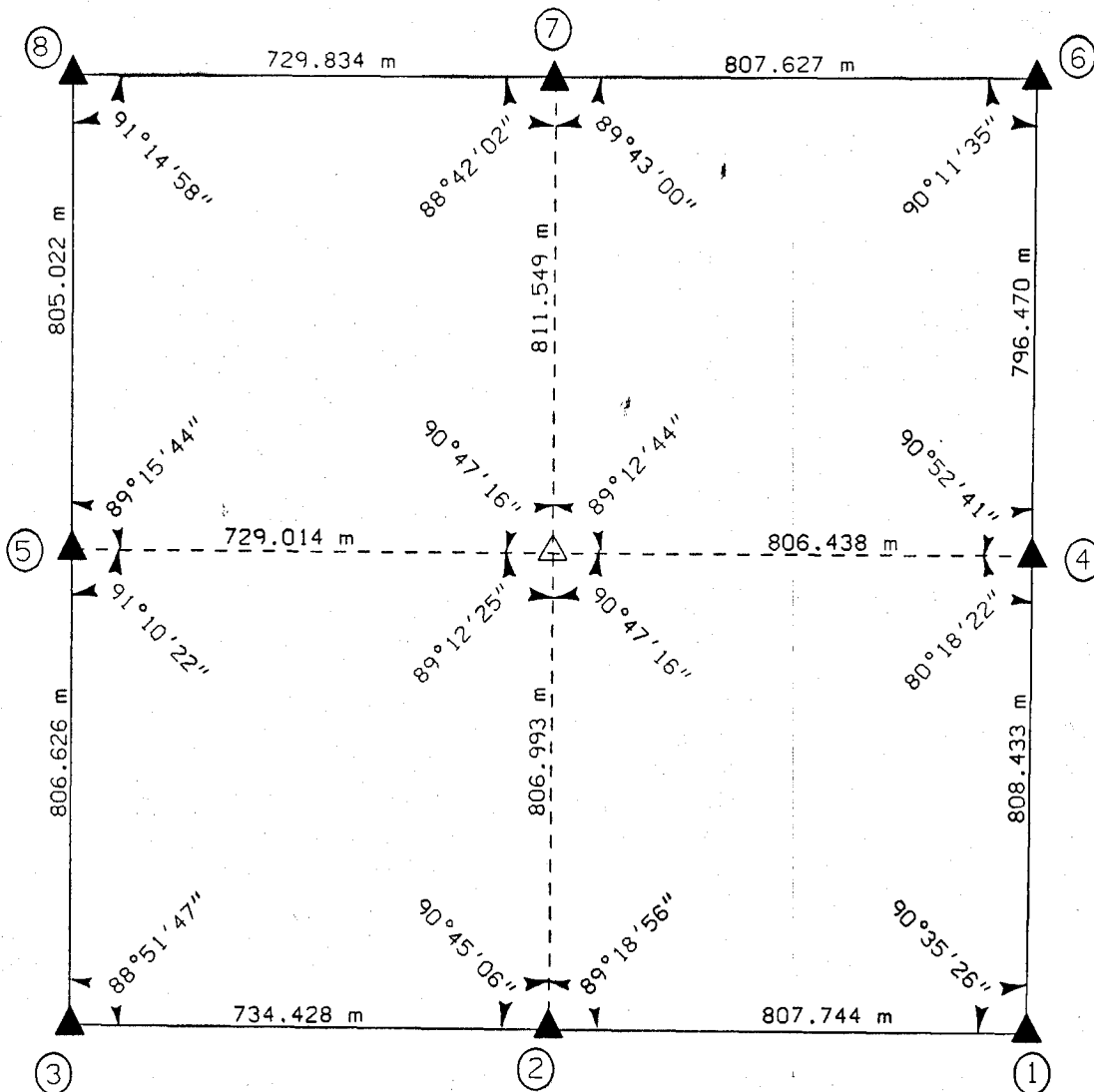
J.D. TJEPKES LS 14807
23428 RIDGE ROAD
ANAMOSA, IOWA, 52205
(319-462-3785)

UNITED STATES PUBLIC SECTION CORNER CERTIFICATION
AND LAND CORNER SURVEY
SECTION 18 T-85N R-3W

MADE FOR
IOWA DEPARTMENT OF TRANSPORTATION FOR THE PURPOSE OF
RIGHT OF WAY DESCRIPTIONS ON PRIMARY ROAD No. U.S. 151

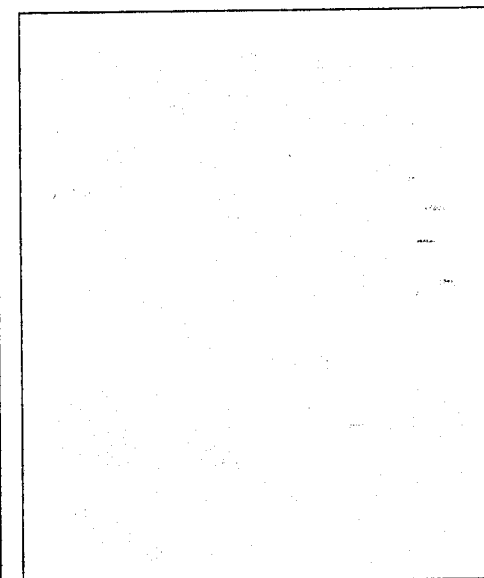
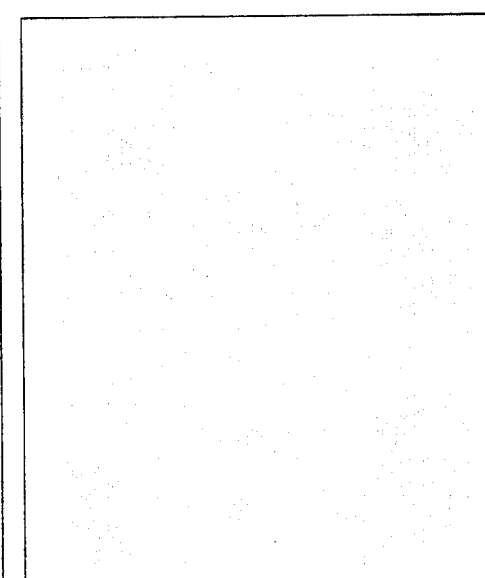
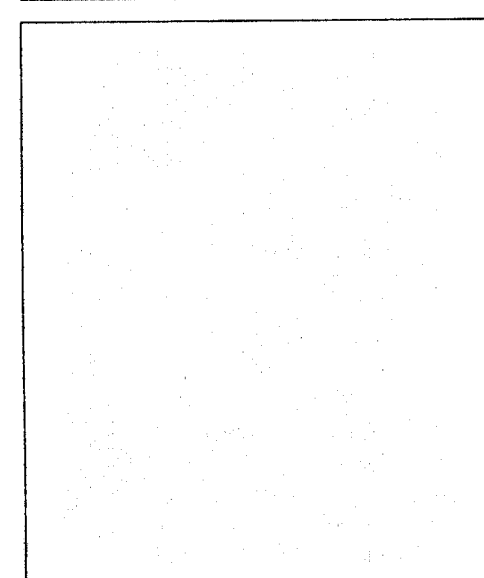
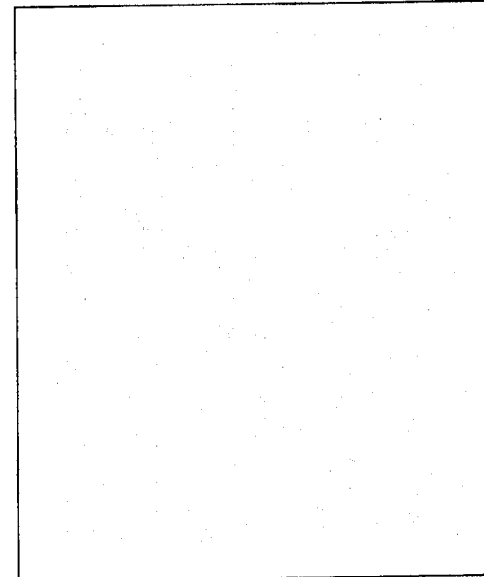
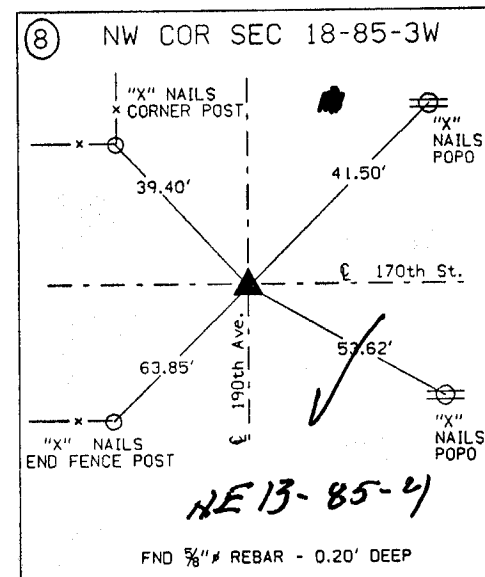
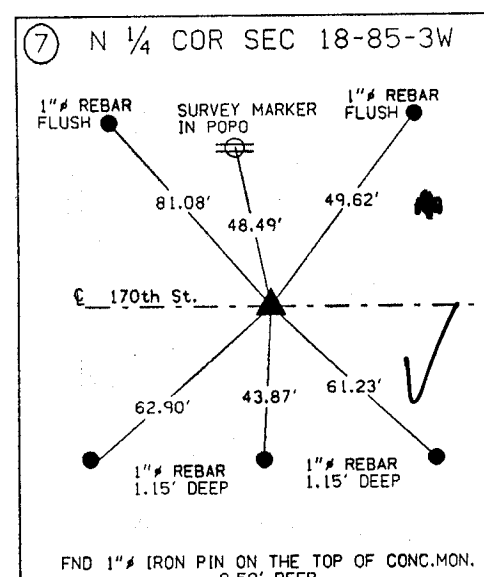
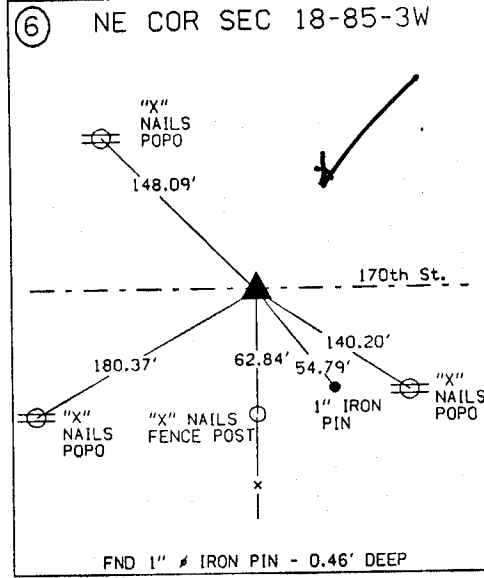
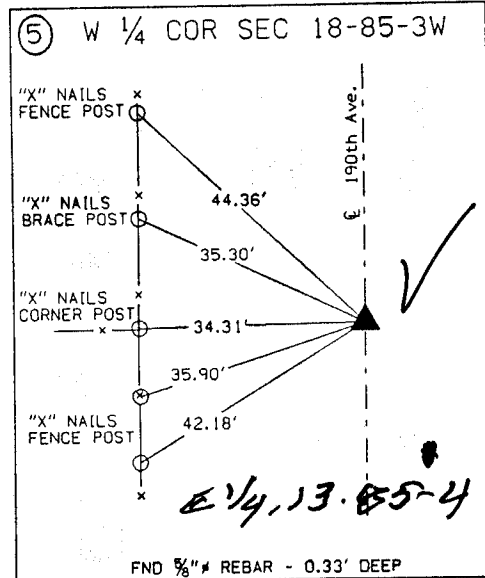
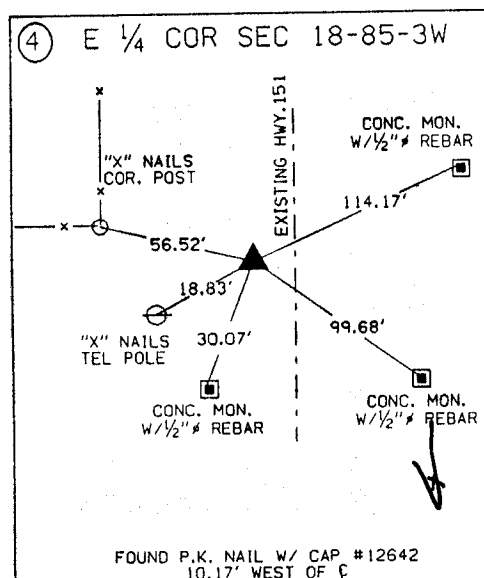
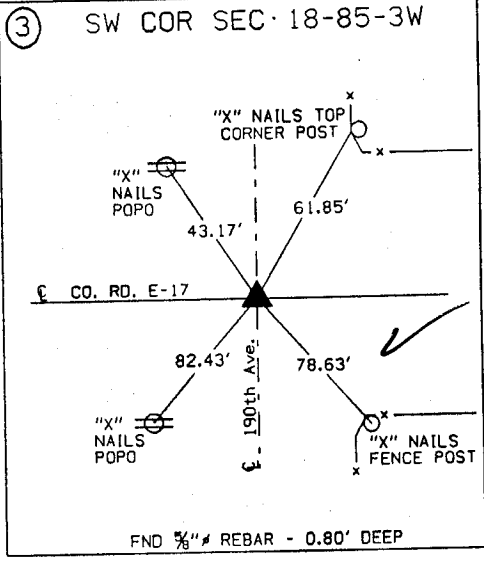
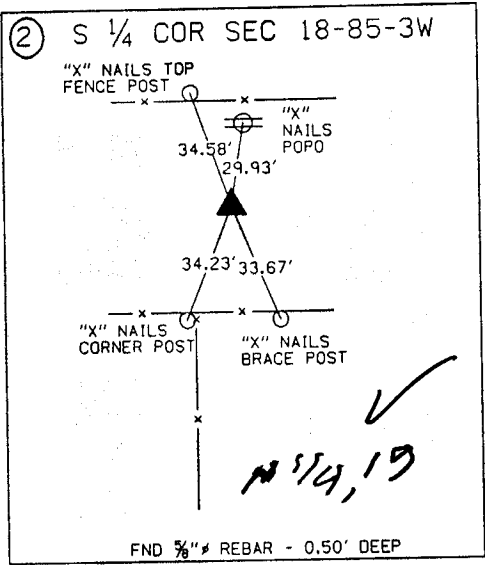
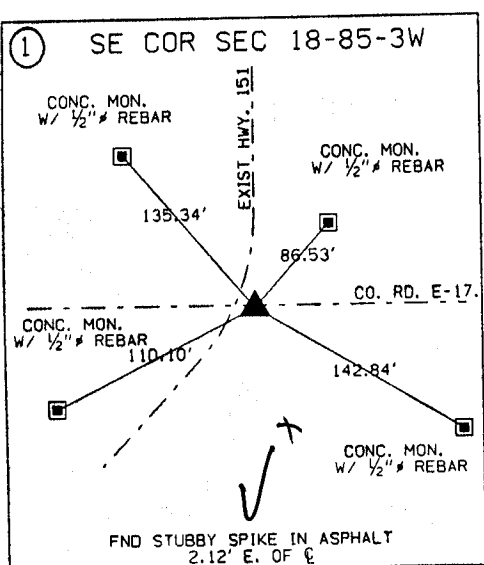
MADE BY
MICHAEL R. FAGLE R.L.S. No. 8505
JONES COUNTY, IOWA NHS-151-3(84)--19-57
APRIL 1998 THRU OCTOBER 1998

ALL DISTANCES WERE CAREFULLY MEASURED AND MAY NOT AGREE WITH ROAD SURVEY STATIONING



	<p>I hereby certify that this Land Surveying document was prepared by me or under my direct personal supervision and that I am a duly Licensed Land Surveyor under the laws of the State of Iowa.</p>
	<p><i>Michael R. Fagle</i> 1-21-99 MICHAEL R. FAGLE Date License number 8505 My license renewal date is December 31, 2000 Pages or sheets covered by this seal: <u>Two (2)</u></p>

UNITED STATES PUBLIC SECTION CORNER CERTIFICATION
AND LAND CORNER SURVEY
SECTION 18 T-85N R-3W



ALL TIES ARE ENGLISH UNLESS OTHERWISE NOTED

UNITED STATES PUBLIC LAND SURVEY CORNER CERTIFICATE

SLSI 9-90

RECEIVED
JUL 16
JONES COUNTY ENGINEER

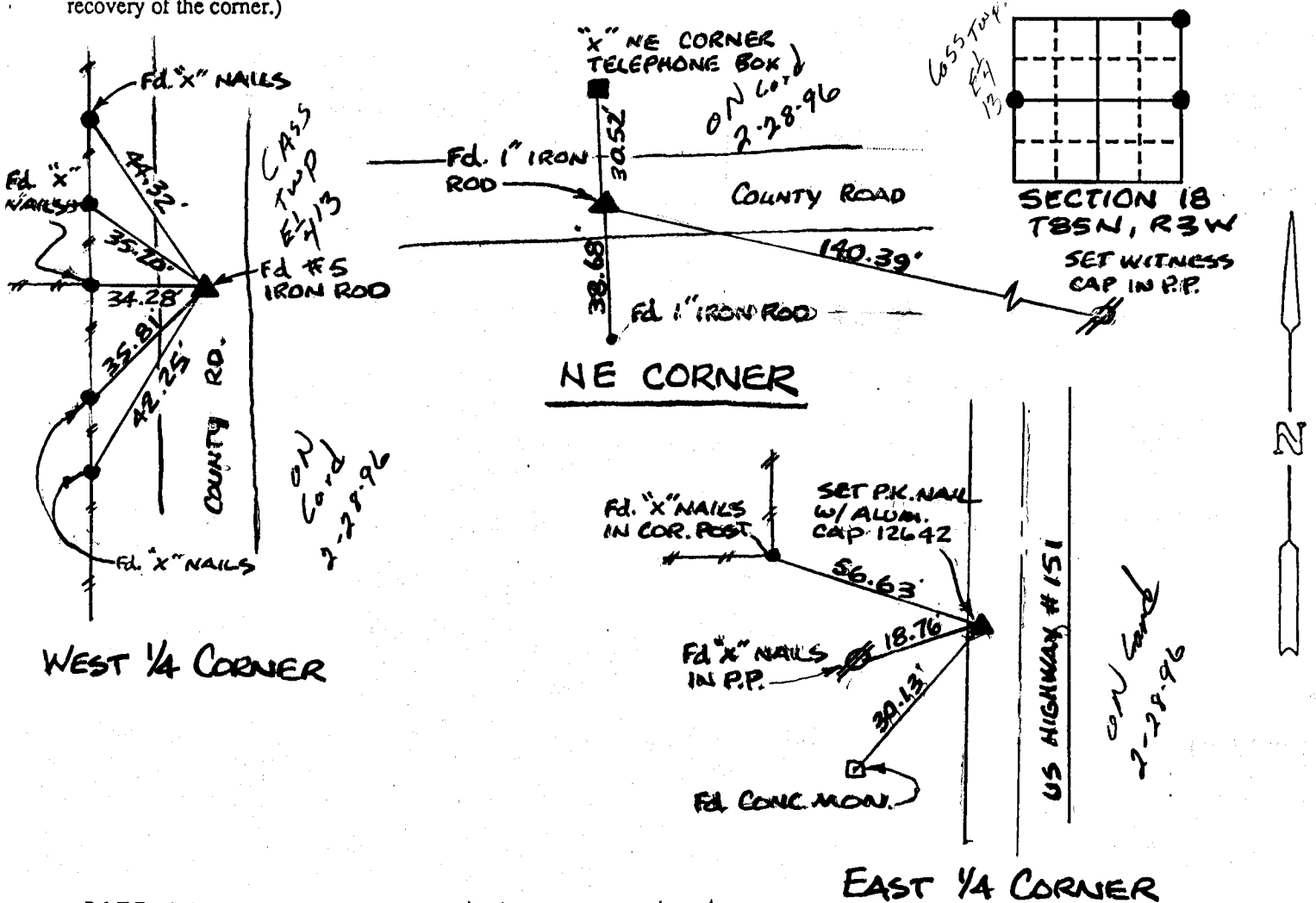
Land Survey Monuments situated in Section EIGHTEEN (18), Township 85 NORTH, Range 3 WEST, of the Fifth Principal Meridian, JONES County, Iowa. Previously recorded in BOOK 295 PAGE 132 in County Recorder's Office.
(book, page, document number, etc.)

(Show reason for preparing this certificate, the evidence and detailed procedures used in establishing the corner positions and monumentation found or placed.)

Monument Description and Remarks: TIE POINT NO LONGER VALID OR DIMENSION CHANGED. NE CORNER - FOUND 1" IRON ROD, EAST 1/4 CORNER - ORIGINAL "X" IN PAVEMENT WAS COVERED BY ASPHALT. USED EXISTING TIES & SET PK NAIL W/ ALUM. CAP #12642, W 1/4 CORNER Fd. #5 IRON ROD

PLAN - VIEW

(Show a minimum of three reference ties to durable physical objects, relevant monuments and physical conditions that will enable recovery of the corner.)

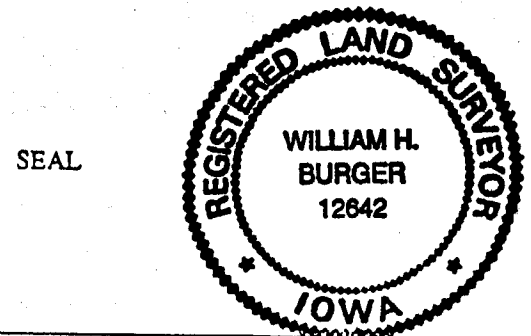


DATE OF FIELD WORK: 6/3/95, 6/27/95

I hereby certify that the survey work was completed and this certificate was prepared by me or under my direct personal supervision and that I am a duly registered land surveyor under the laws of the state of Iowa.

Signature: William H. Burger
Name typed or printed: WILLIAM H. BURGER
Date: 7/5/95 Reg. No. 12642

Corners	List Corners to be Indexed Section	Twp	Range
W 1/4	18	85 NORTH	3 WEST
E 1/4	18	85 NORTH	3 WEST
NE	18	85 NORTH	3 WEST



854130-070595
853180-070595
070595

Wayne Twp.