

2005 4302

FILED
RECORDERS OFFICE
JONES COUNTY IOWA

05 NOV 29 AM 9:57

MARIE KRUTZFIELD
RECORDER NO FEE

*LOVELL
W/SINE*

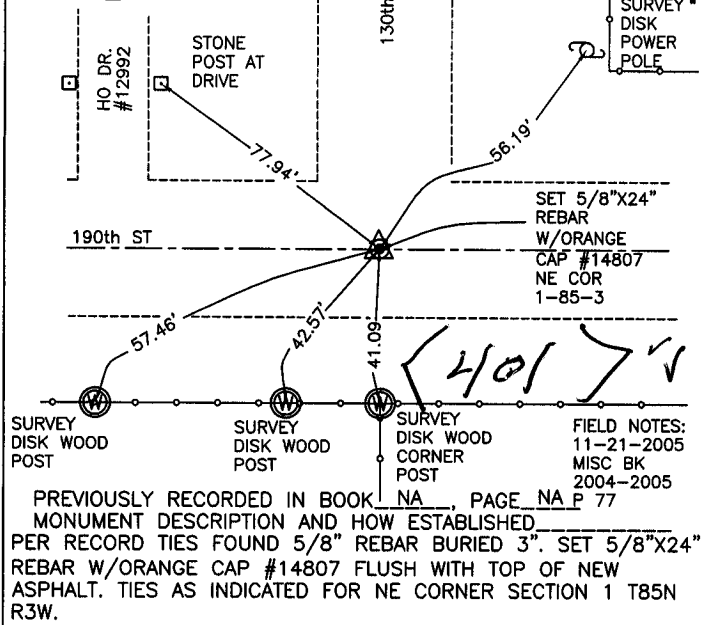
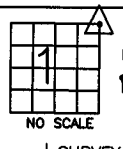
J.D. TJEPKES, LS. JONES COUNTY ENGINEER'S OFFICE, 19501 HWY. 64, ANAMOSA, IOWA, 52205 (319)462-3785

UNITED STATES PUBLIC LAND SURVEY CORNER CERTIFICATE

LAND SURVEY MONUMENTS SITUATED IN SECTION 1, TOWNSHIP 85
NORTH, RANGE 3 WEST OF THE 5TH P.M., JONES COUNTY, IOWA

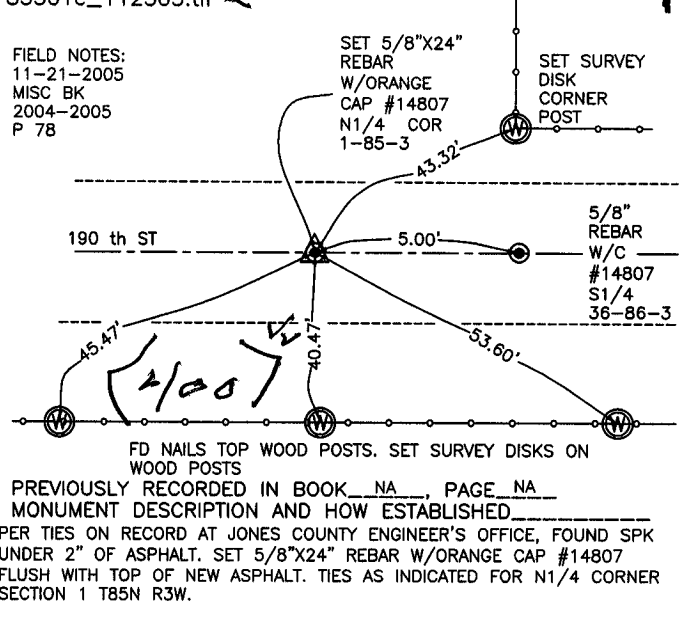
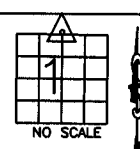
CORNERS TO BE INDEXED

CORNER SECTION TOWNSHIP RANGE
NE 1 85N 3W
OFFICE FILE NO.
85301e_112305.tif



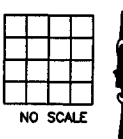
CORNERS TO BE INDEXED

CORNER SECTION TOWNSHIP RANGE
N1/4 1 85N 3W
OFFICE FILE NO.
85301c_112305.tif



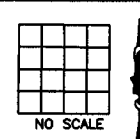
CORNERS TO BE INDEXED

CORNER SECTION TOWNSHIP RANGE
OFFICE FILE NO.



CORNERS TO BE INDEXED

CORNER SECTION TOWNSHIP RANGE
OFFICE FILE NO.



2005 4301

FILED
RECORDERS OFFICE
JONES COUNTY IOWA

05 NOV 29 AM 9:56

MARIE KRUTZFIELD
RECORDER NO FEE

LOVELL

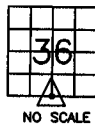
J.D. TJEPKES, LS. JONES COUNTY ENGINEER'S OFFICE, 19501 HWY. 64, ANAMOSA, IOWA, 52205 (319)462-3785

UNITED STATES PUBLIC LAND SURVEY CORNER CERTIFICATE

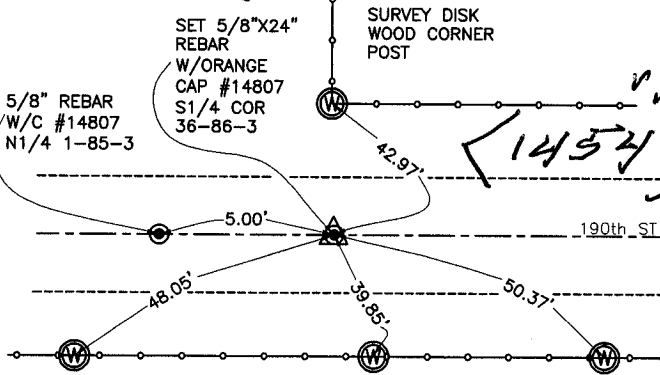
LAND SURVEY MONUMENTS SITUATED IN SECTION 36, TOWNSHIP 86
NORTH, RANGE 3 WEST OF THE 5TH P.M., JONES COUNTY, IOWA

CORNERS TO BE INDEXED

CORNER SECTION TOWNSHIP RANGE
S1/4 36 86N 3W



OFFICE FILE NO.
86336w_112805.tif

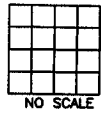


FIELD NOTES:
MISC BK 2004-2005 P 77
FD NAILS TOP WOOD POSTS. SET SURVEY DISKS WOOD POSTS

PREVIOUSLY RECORDED IN BOOK NA, PAGE NA
MONUMENT DESCRIPTION AND HOW ESTABLISHED _____
PER TIES ON RECORD AT JONES COUNTY ENGINEER'S OFFICE, FOUND 5/8" REBAR. SET 5/8"x24" REBAR W/ORANGE CAP #14807 FLUSH WITH TOP OF NEW ASPHALT. TIES AS INDICATED FOR S1/4 CORNER SECTION 36 T86N R3W.

CORNERS TO BE INDEXED

CORNER SECTION TOWNSHIP RANGE



OFFICE FILE NO. _____

PREVIOUSLY RECORDED IN BOOK _____, PAGE _____
MONUMENT DESCRIPTION AND HOW ESTABLISHED _____

CORNERS TO BE INDEXED

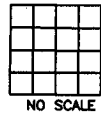
CORNER SECTION TOWNSHIP RANGE



OFFICE FILE NO. _____

CORNERS TO BE INDEXED

CORNER SECTION TOWNSHIP RANGE



OFFICE FILE NO. _____

THIS IS NOT A CERTIFICATION

JONES COUNTY ENGINEER'S OFFICE, 19501 HWY. 64, ANAMOSA, IOWA, 52205 (319)462-3785

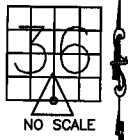
UNITED STATES PUBLIC LAND SURVEY CORNER CERTIFICATE

LAND SURVEY MONUMENTS SITUATED IN SECTION 36, TOWNSHIP 86 NORTH, RANGE 3 WEST OF THE 5TH P.M., JONES COUNTY, IOWA

CORNERS TO BE INDEXED

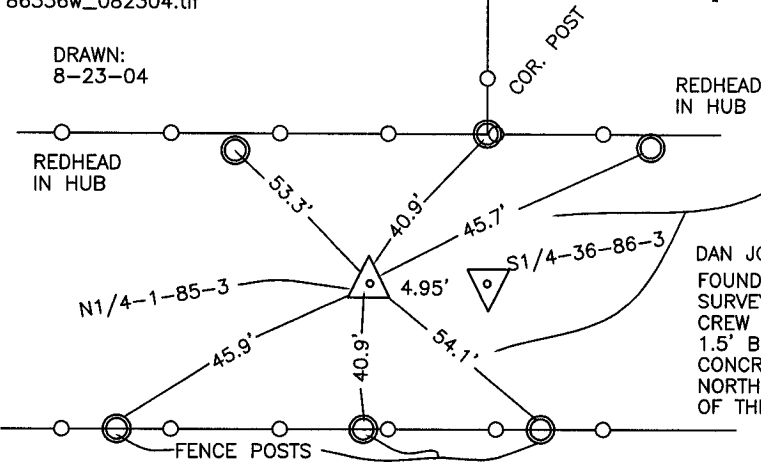
CORNER SECTION TOWNSHIP RANGE
S-QUARTER 36 86N 3W

OFFICE FILE NO.
86336w_082304.tif



REF: JONES COUNTY SURVEY CREW 1963. NORTHUP-THOMPSON-CROSS BOOK 203, PAGE 40&77.

DRAWN: 8-23-04



THE TIES AS INDICATED ARE FROM THE 1963 COUNTY SURVEY CREW FOR THE NORTH QUARTER CORNER OF SECTION 1-85-3. THE 4.95' OFFSET TO THE SOUTH QUARTER CORNER OF SECTION 36-86-3 IS PER ORIGINAL SURVEY NOTES.

DAN JOHNSON
FOUND SPIKE WITH RIBBON IN CENTER OF ROAD IN JULY, 1991. COUNTY SURVEY CREW FOUND IRON PIN IN OCTOBER OF 1985. COUNTY SURVEY CREW FOUND CONCRETE MONUMENT WITH IRON ROD THROUGH CENTER 1.5' BELOW ROAD SURFACE PRIOR TO REGRADING IN 1963. THE ORIGINAL CONCRETE MONUMENT IS PROBABLY STILL BELOW THE ROAD SURFACE. NORTH QUARTER CORNER SECTION 1, TOWNSHIP 85 NORTH, RANGE 3 WEST OF THE 5TH PM, JONES COUNTY, IOWA.

PREVIOUSLY RECORDED IN BOOK _____, PAGE _____
MONUMENT DESCRIPTION AND HOW ESTABLISHED _____ THERE
ARE NO TIES FOR THE SOUTH QUARTER CORNER OF SECTION 1, TOWNSHIP 86 NORTH, RANGE 3 WEST OF THE 5TH PRINCIPAL MERIDIAN, JONES COUNTY, IOWA. THE TIES AS INDICATED ARE FOR THE NORTH QUARTER CORNER OF SECTION 1, TOWNSHIP 85 NORTH, RANGE 3 WEST OF THE 5TH PRINCIPAL MERIDIAN, JONES COUNTY, IOWA. THIS IS A CORRECTION TOWNSHIP LINE.

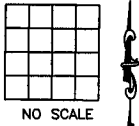
1254

86336w-011905.tif

CORNERS TO BE INDEXED

CORNER SECTION TOWNSHIP RANGE

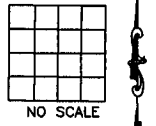
OFFICE FILE NO.



CORNERS TO BE INDEXED

CORNER SECTION TOWNSHIP RANGE

OFFICE FILE NO.



PREVIOUSLY RECORDED IN BOOK _____, PAGE _____
MONUMENT DESCRIPTION AND HOW ESTABLISHED _____

PREVIOUSLY RECORDED IN BOOK _____, PAGE _____
MONUMENT DESCRIPTION AND HOW ESTABLISHED _____

~~I hereby declare that this plat, survey or report was made by me or under my direct personal supervision and that I am a duly registered Land Surveyor under the laws of the State of Iowa.~~

Signed:

SEAL

JONES COUNTY ENGINEER'S OFFICE

19501 HWY. 64,
ANAMOSA, IOWA,
52205 (319)462-3785

SECTION CORNER CERTIFICATE

OF
 LAND SURVEY MONUMENTS SITUATED IN SECTION 1, TOWNSHIP 85 NORTH,
 RANGE 3 WEST, OF THE FIFTH PRINCIPAL MERIDIAN, JONES, COUNTY, IOWA.

PREVIOUSLY RECORDED IN BOOK _____ AT PAGE _____ .

FOR RECORDER'S USE

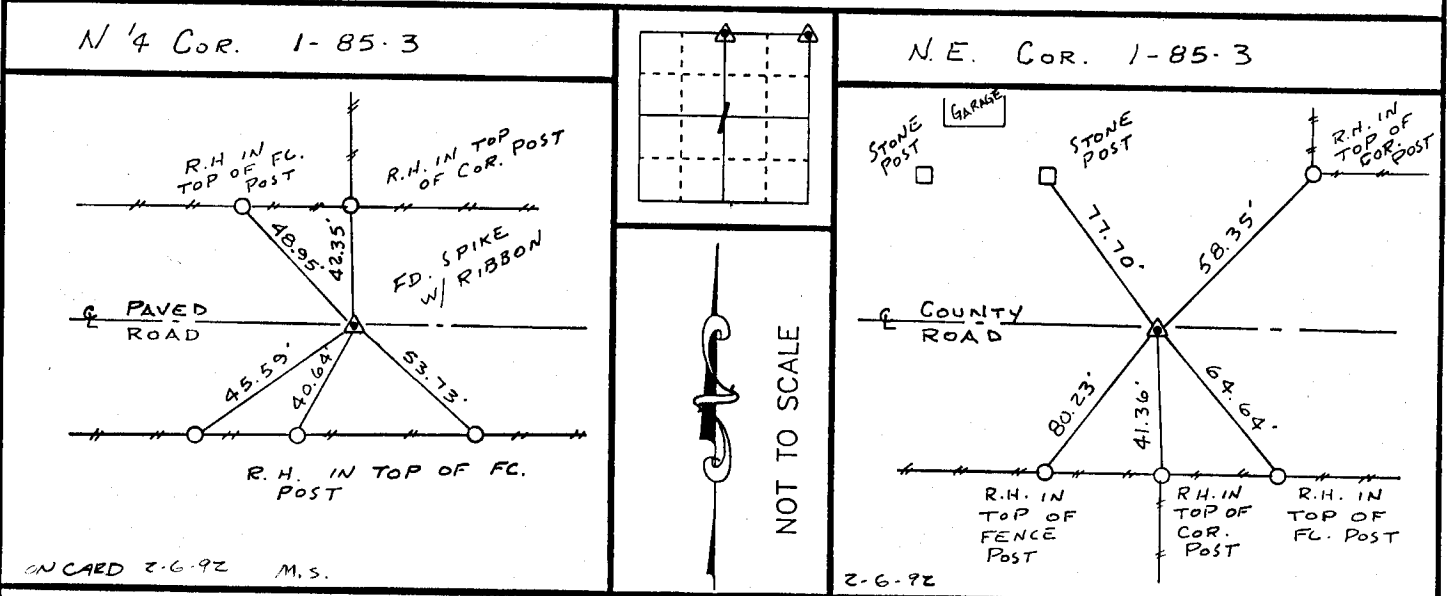
REASON FOR PREPARING CERTIFICATE:

- A) THERE IS NO CERTIFICATE FOR THE CORNER ON FILE WITH THE RECORDER OF THE COUNTY IN WHICH THE CORNER IS LOCATED.
- B) CORNER POSITION DIFFERS FROM THAT SHOWN IN THE PUBLIC RECORDS OF THE COUNTY IN WHICH THE CORNER IS LOCATED.
- C) THE CORNER MONUMENT HAS BEEN REPLACED OR MODIFIED.
- D) THE REFERENCE TIES REFERRED TO IN AN EXISTING PUBLIC RECORD ARE INCORRECT.

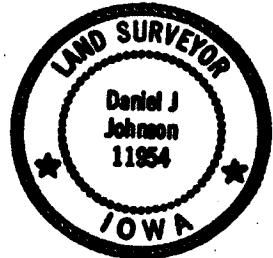
MONUMENT DESCRIPTION AND REMARKS :

N 1/4 CORNER SECTION 1-T85N-R3W FOUND SPIKE NAIL W/ RIBBON ON E
COUNTY PAVED ROAD FLUSH WITH SURFACE
N.E. CORNER SECTION 1-T85N-R3W FOUND 5/8" REBAR 3" DEEP ON E
COUNTY ROAD

RECOVERY TIE DRAWING



I, DANIEL T. JOHNSON, CERTIFY THAT THE CORNER LOCATION(S) SHOWN ON THIS RECORD WERE DETERMINED BY ME OR UNDER MY DIRECTION AND CONTROL AND THAT THIS U.S. PUBLIC LAND SURVEY MONUMENT RECORD IS CORRECT AND COMPLETE TO THE BEST OF MY KNOWLEDGE AND BELIEF.



Daniel Johnson
 DANIEL T. JOHNSON L.S. NO 11954 DATE 1-7-91

DZREGEL	<input type="checkbox"/> GOVERNMENT CORNER <input type="checkbox"/> 5/8" TIE PIN SET — CENTERLINE - - - EXISTING FENCE LINE - - - R.O.W. LINE	SHEET TITLE: U.S. PUBLIC LAND SURVEY RECORD PROJECT TITLE: <u>ME MULLIN SURVEY</u>	HALL AND HALL ENGINEERS, INC. 226 29TH STREET DRIVE S.E. CEDAR RAPIDS, IOWA 52403 319-362-9548
	DW N R.W.B.	CHK D.J.J.	
		DATE <u>1-3-92</u>	SCALE <u>NONE</u>
		F NO <u>0T23</u>	P NO <u>4571</u>

85301e - 010791 , 85301e - 010791