

Instrument #: 2015-3128
 10/30/2015 10:21:15 AM Total Pages: 1
 ZSC SECTION CORNER CERTIFICATE
 Recording Fee: \$7.00 Transfer Tax: \$0
 Sheri L. Jones, Recorder, Jones County Iowa



Prepared by/Return to: FEHR GRAHAM, 1919 210th Street, Manchester IA 52057 - Ph: (563)927-2060

UNITED STATES PUBLIC LAND SURVEY CORNER CERTIFICATE

OF

Land Survey Monuments situated in Section 21, Township 85 North, Range 3 West of the Fifth Principal Meridian, Jones County, Iowa.

Previously recorded in (1) Bk. 2010, Pg. 0381 (2) Bk. 2008, Pg. 1875 in County Recorder's Office.
 (book, page, document number, etc.)

(Show reason for preparing this certificate, the evidence and detailed procedures used in establishing the corner positions and monumentation found or placed.)

Monument Description and Remarks: (1) SE Corner of the NE1/4-NE1/4 of Section 21-T85N-R3W:

Section corner information was obtained before and set after concrete overlay project. Found cut "x" in P.C.C. pavement before P.C.C. overlay. Set mag nail in cut "x" in P.C.C. pavement and three new ties.

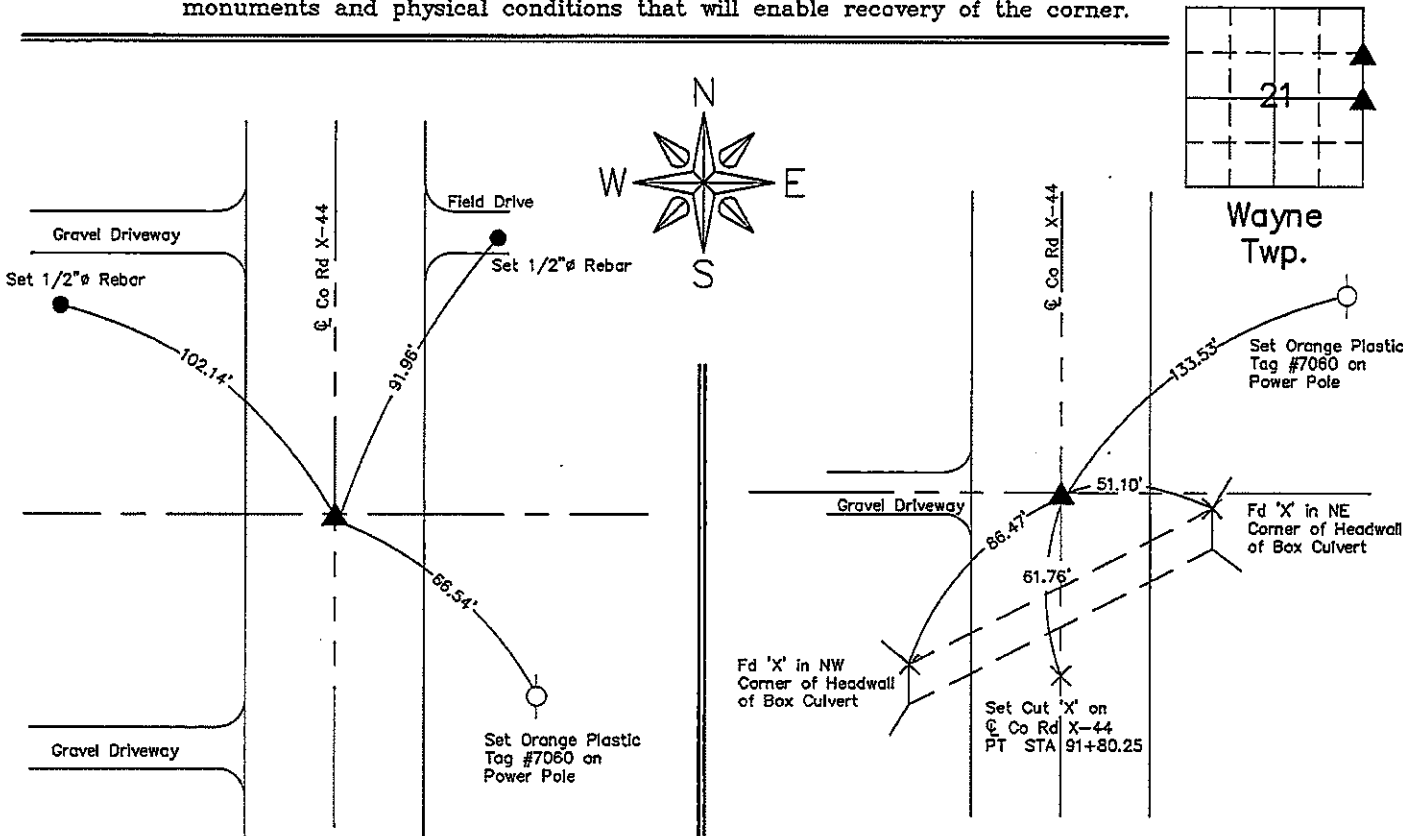
(2) E1/4 Corner of Section 21-T85N-R3W:

Section corner information was obtained before and set after concrete overlay project. Found 5/8" rebar with orange plastic cap with #11310 before P.C.C. overlay. Set mag nail in cut "x" in P.C.C. pavement and two new ties.

PLAN VIEW

Project Number 15-321

Show a minimum of three reference ties to durable physical objects, relevant monuments and physical conditions that will enable recovery of the corner.



(1) SE Corner of the NE1/4-NE1/4 of Sec. 21-T85N-R3W

Set Mag Nail in Cut "X" in P.C.C. Pavement

(2) E1/4 Corner of Sec. 21-T85N-R3W

Set Mag Nail in Cut "X" in P.C.C. Pavement

PROF. ENGINEER & LAND SURVEYOR
 LYLE G. TeKIPPE
 7060
 IOWA

I hereby certify that this land surveying document was prepared and the related survey work was performed by me or under my direct personal supervision and that I am a duly licensed Land Surveyor under the laws of the State of Iowa.

Lyle G. TeKippe 10-28-15
 Lyle G. TeKippe, P.E. & P.L.S. Date
 License Number: 7060
 My license renewal date is December 31, 2016.
 Sheets covered by this seal: This Sheet Only

List Corners to be Indexed			
Corners	Section	Twp.	Range
SE of NE1/4-NE1/4	21	85N	3W
E1/4	21	85N	3W

G:\C3D\15\15-321\15-321-LEGAL.dwg

FEEBOOK: 2010 0381 2/16/2010 10:19 AM
 REC FEES: \$9.00
 PAGES: 1

Marie Krutzfield, Recorder
 Jones County, Iowa

TeKIPPE ENGINEERING, P.C., 1919 210th Street, P.O. Box 357, Manchester, Iowa 52057 Phone (563) 927-2060

UNITED STATES PUBLIC LAND SURVEY CORNER CERTIFICATE

OF

Land Survey Monuments situated in Section 21, Township 85 North, Range 3 West of the Fifth Principal Meridian, Jones County, Iowa.

Previously recorded in None in County Recorder's Office.
 (book, page, document number, etc.)

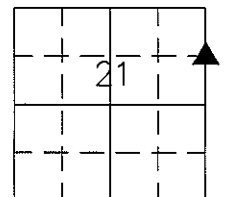
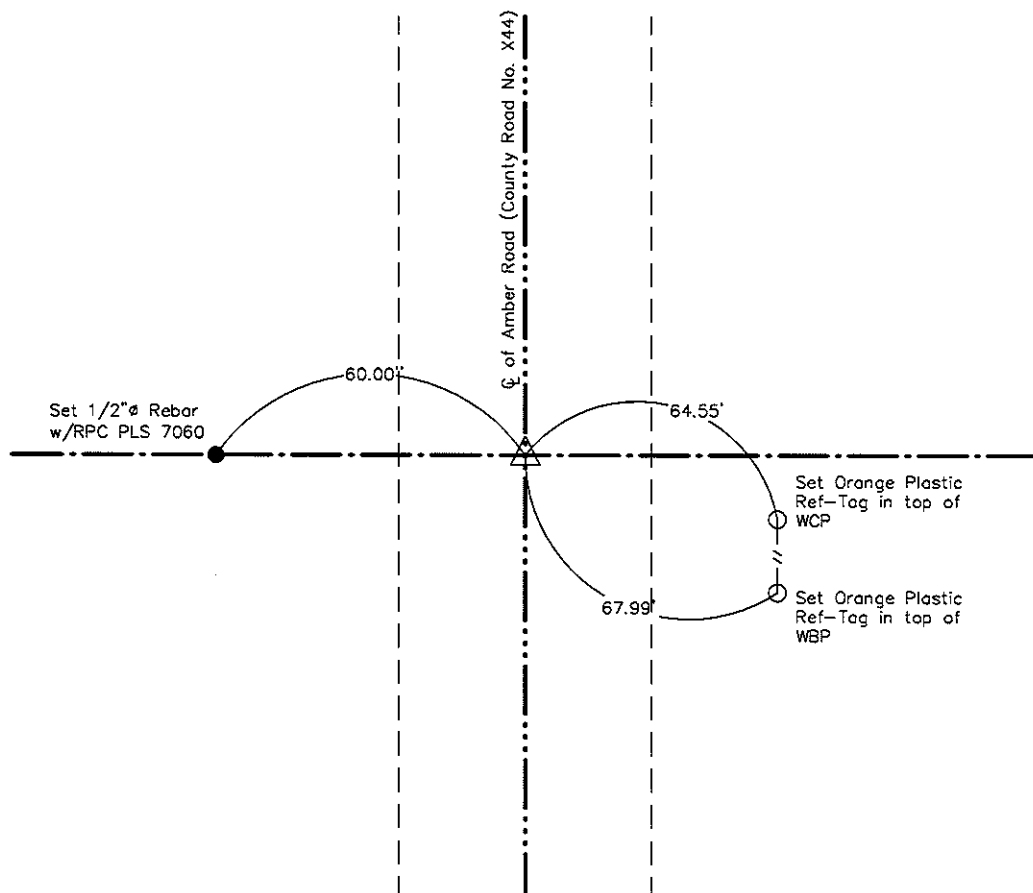
(Show reason for preparing this certificate, the evidence and detailed procedures used in establishing the corner positions and monumentation found or placed.)

Monument Description and Remarks: SE Corner of the NE 1/4-NE 1/4 of Section 21-85-3. Set Cut 'X' equidistant and online between the NE Corner of Section and the East 1/4 Corner of Section.

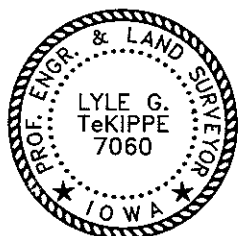
PLAN VIEW

Project Number 102006.LS
 Field Book: Jones Co. Monticello
 No.1, Pages 26-27

Show a minimum of three reference ties to durable physical objects, relevant monuments and physical conditions that will enable recovery of the corner.



SE COR Corner of NE 1/4-NE 1/4 Sec. 21-T85N-R3W
 Set Cut 'X'



I hereby certify that this land surveying document was prepared and the related survey work was performed by me or under my direct personal supervision and that I am a duly licensed Land Surveyor under the laws of the State of Iowa.

Lyle G. TeKippe 2-11-10
 Lyle G. TeKippe Date

License Number 7060
 My license renewal date is December 31, 2010.
 Sheets covered by this seal: Individual

List Corners to be Indexed

Corners	Section	Twp.	Range
SE COR	21	85N	3W
NE 1/4-NE 1/4			