

Instrument #: 2025-1718  
07/21/2025 12:57:49 PM Total Pages: 1  
ZSC SECTION CORNER CERTIFICATE  
Recording Fee: \$7.00 Transfer Tax: \$0  
Sheri L. Jones, Recorder, Jones County Iowa

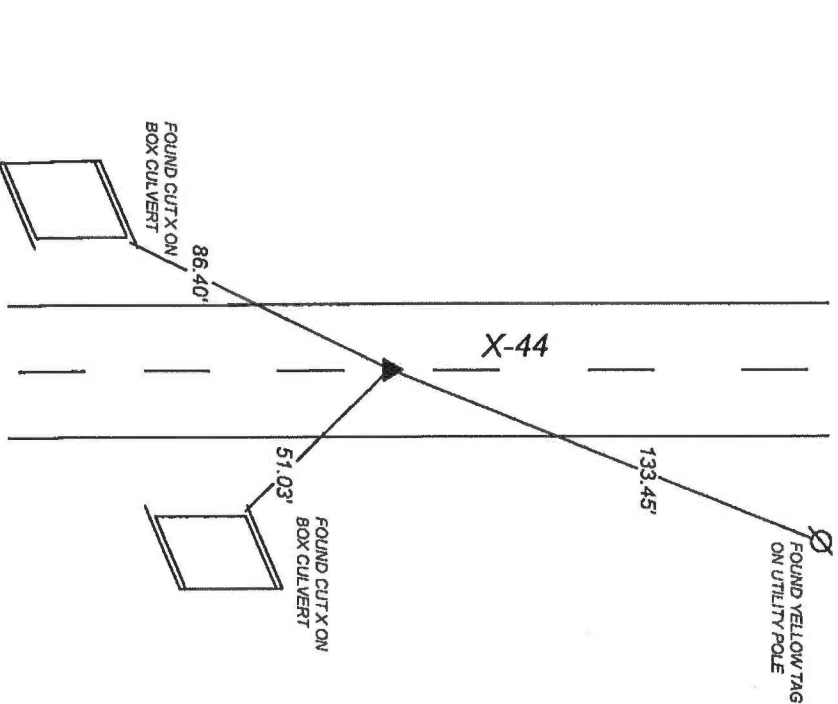
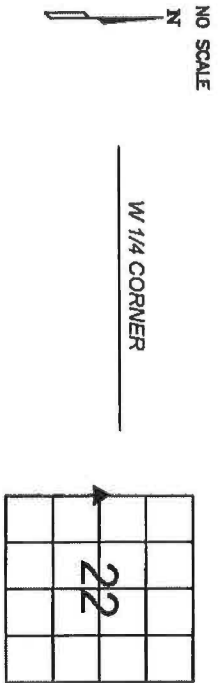


PREPARED BY

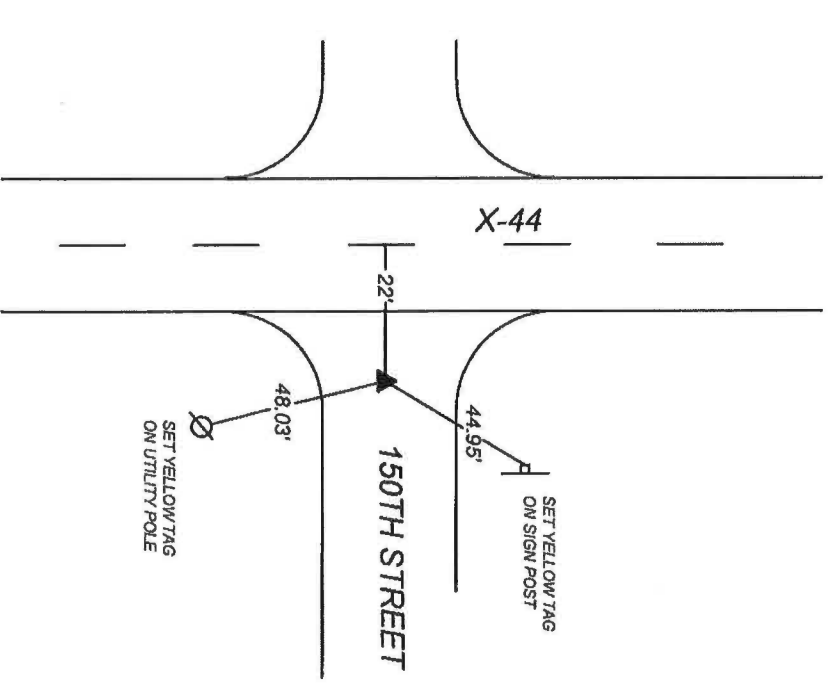
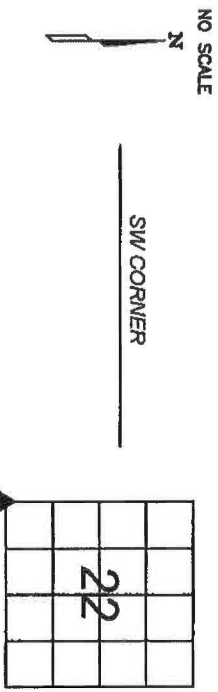
STEPHEN MICHAEL BRAIN, BRAIN ENGINEERING, INC., 1540 MIDLAND COURT NE, CEDAR RAPIDS, IOWA PH. (319) 294-9424

# UNITED STATES PUBLIC LAND SURVEY CORNER CERTIFICATE

LAND SURVEY MONUMENTS SITUATED IN SECTION 22, TOWNSHIP 85 NORTH  
RANGE 3 WEST OF THE 5TH P.M., JONES COUNTY, IOWA.



PREVIOUSLY RECORDED IN BOOK 2018 PAGE 1875  
MONUMENT DESCRIPTION AND HOW ESTABLISHED \_\_\_\_\_  
FOUND CUT X WITH MAG NAIL 0.2' EAST OF CENTERLINE OF X-44.  
LOCATION MATCHED ONE DIMENSION SHOWN ON TIES RECORDED  
IN FEEBOOK 2008 1875 AND DIMENSION SHOWN FROM W 1/4 TO SW  
CORNER ON ACQUISITION PLAT PARCEL NO. 2007-16.



PREVIOUSLY RECORDED IN BOOK 2015 PAGE 3129  
MONUMENT DESCRIPTION AND HOW ESTABLISHED \_\_\_\_\_  
FOUND 3/4" REBAR W/OPC 22' EAST OF CENTERLINE OF X-44 AND 10'   
BELOW CENTERLINE OF 150TH STREET. LOCATION MATCHED TIES  
RECORDED IN FEEBOOK 2015-3129 AND DIMENSION SHOWN FROM  
W 1/4 TO SW CORNER ON ACQUISITION PLAT PARCEL NO. 2007-16.



I hereby certify that this land surveying document  
and the related survey work was performed by me  
or under my direct personal supervision and that  
I am a duly licensed Land Surveyor under the laws  
of the State of Iowa.  
Signed

Kevin F. Bradshaw, L.S.  
My License Renewal Date is December 31, 2026  
License Number 17543  
Pages or sheets covered by this seal: 1/1

CORNERS TO BE INDEXED

CORNER	SECTION	TOWNSHIP	RANGE
W 1/4 CORNER	22	T85N	R3W
SW CORNER	22	T85N	R3W

☐ A. THERE IS NO CERTIFICATE FOR THE CORNER ON FILE  
WITH THE RECORDER OF THE COUNTY IN WHICH THE  
CORNER IS LOCATED  
☐ B. THE SURVEYOR IN RESPONSIBLE CHARGE OF THE LAND  
SURVEYING ACCEPTS A CORNER POSITION WHICH DIFFERS  
FROM THAT SHOWN IN THE PUBLIC RECORDS OF THE  
COUNTY IN WHICH THE CORNER IS LOCATED.  
☒ C. THE CORNER MONUMENT IS REPLACED OR MODIFIED IN  
ANY WAY.  
☐ D. THE REFERENCE TIES REFERRED TO IN AN EXISTING  
PUBLIC RECORD ARE NOT CORRECT.

BRAIN ENGINEERING, INC.  
1540 MIDLAND COURT NE  
CEDAR RAPIDS, IOWA 52402  
(319) 294-9424



Prepared by/Return to: FEHR GRAHAM, 1919 210th Street, Manchester IA 52057 - Ph: (563)927-2060

# UNITED STATES PUBLIC LAND SURVEY CORNER CERTIFICATE

Land Survey Monuments situated in Section 21, Township 85 North, Range 3 West of the Fifth Principal Meridian, Jones County, Iowa.  
Previously recorded in (1) Bk. 2010, Pg. 0381 (2) Bk. 2008, Pg. 1875 in County Recorder's Office.  
(book, page, document number, etc.)

(Show reason for preparing this certificate, the evidence and detailed procedures used in establishing the corner positions and monumentation found or placed.)

Monument Description and Remarks: (1) SE Corner of the NE1/4-NE1/4 of Section 21-185N-R3W.

Section corner information was obtained before and set after concrete overlay project. Found cut "x" in P.C.C. pavement before P.C.C. overlay. Set mag nail in cut "x" in P.C.C. pavement and three new ties.

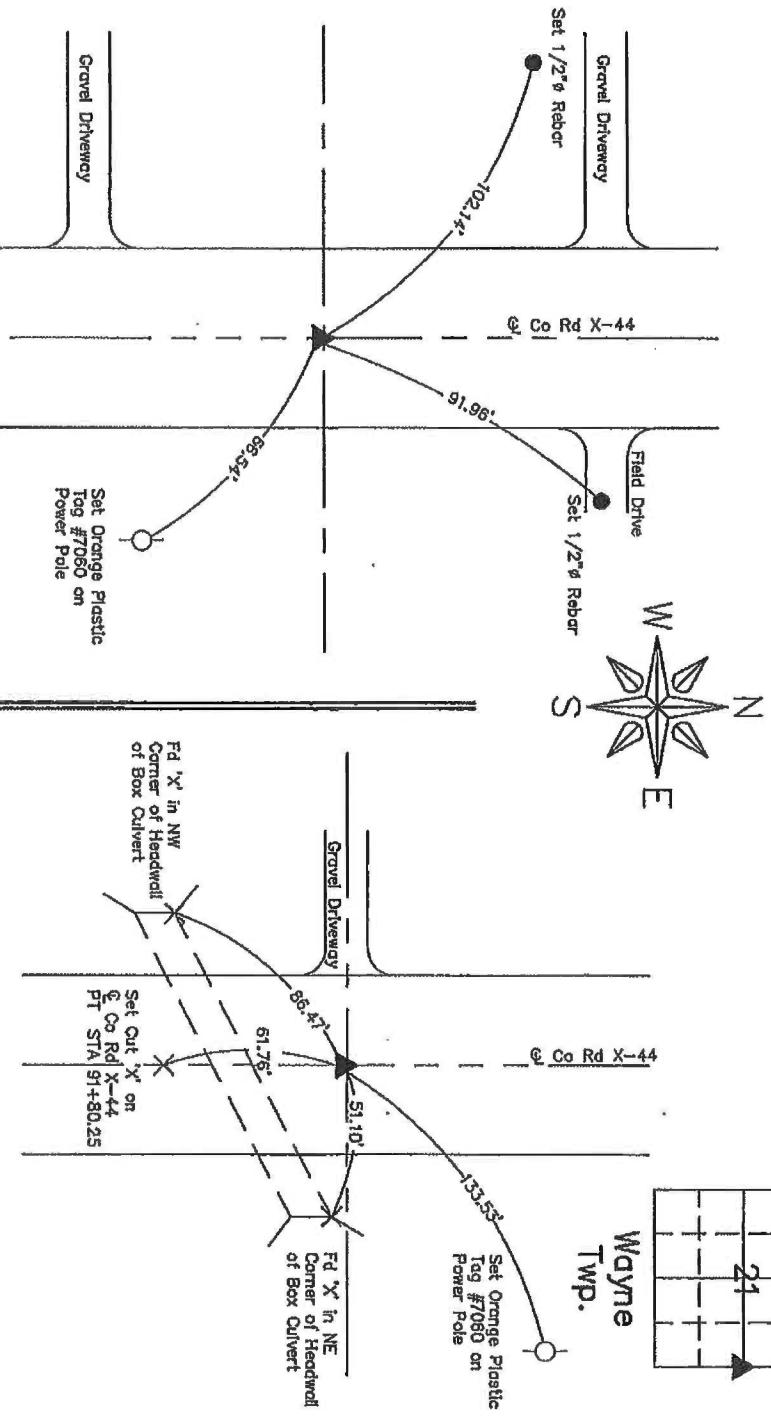
(2) E1/4Corner of Section 21-185N-R3W.

Section corner information was obtained before and set after concrete overlay project. Found 5/8" rebar with orange plastic cap with #11310 before P.C.C. overlay. Set mag nail in cut "x" in P.C.C. pavement and two new ties.

## PLAN VIEW

Project Number 15-321

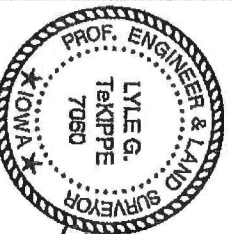
Show a minimum of three reference ties to durable physical objects, relevant monuments and physical conditions that will enable recovery of the corner.



(1) SE Corner of the NE1/4-NE1/4 of Sec. 21-185N-R3W  
Set Mag Nail in Cut "x" in P.C.C. Pavement

(2) E1/4 Corner of Sec. 21-185N-R3W  
Set Mag Nail in Cut "x" in P.C.C. Pavement

I hereby certify that this land surveying document was prepared and the related survey work was performed by me or under my direct personal supervision and that I am a duly licensed Land Surveyor under the laws of the State of Iowa.



Lyle G. Tekippe, P.E. & L.S.  
License Number: 7060  
My license renewal date is December 31, 2016.  
Sheets covered by this seal: This Sheet Only

### List Corners to be Indexed

Corners	Section	Twp.	Range
SE of NE1/4-	21	85N	3W
NE1/4			
E1/4	21	85N	3W

G:\CSD\15\15-321\15-321-LEGAL.dwg

Marie Krutzfield, Recorder  
Jones County, Iowa

PREPARED BY  
CLARENCE J. WALTON, JONES COUNTY ENGINEER'S OFFICE, 19501 HWY. 64, ANAMOSA, IOWA, 52205 (319) 462-3785

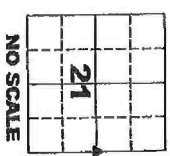
UNITED STATES PUBLIC LAND  
SURVEY CORNER CERTIFICATE  
LAND SURVEY MONUMENTS SITUATED IN SECTION 21, TOWNSHIP 85 NORTH,  
RANGE 3 WEST OF THE 5TH PRINCIPAL MERIDIAN, JONES COUNTY, IOWA.

OFFICE FILE NO.

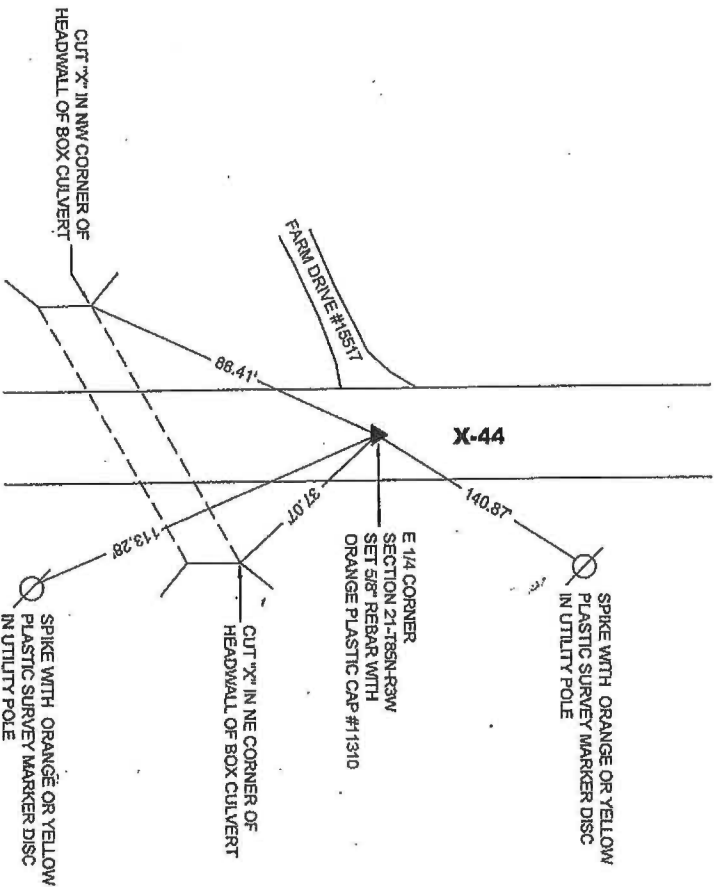
CORNER SECTION TOWNSHIP RANGE  
E 1/4 21 85N 3W

STATE PLANE COORDINATE  
NAD 83 IOWA NORTH  
N 3529071.88  
E 5547527.86

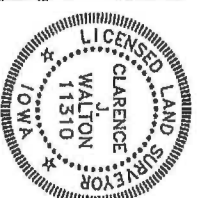
NOTE:  
THE STATE PLANE COORDINATE AS INDICATED IS FOR CONVENIENCE ONLY.  
THE TIES AS SHOWN SHOULD BE USED TO REPLACE THE CORNER, IF  
DESTROYED



NO SCALE



PREVIOUSLY RECORDED IN BOOK 2001, PAGE 1604  
MONUMENT DESCRIPTION AND HOW ESTABLISHED RESET CORNER FOLLOWING CONSTRUCTION OF BOX CULVERT. REPLACED PREVIOUS  
MONUMENT WITH 5/8\"/>



I hereby certify that this land surveying document  
and the related survey work was performed by me  
or under my direct personal supervision and that  
I am a duly registered Land Surveyor under the laws  
of the State of Iowa.  
Signed: *Clarence J. Walton* 6/20/08  
Clarence J. Walton, L.S.  
My Registration Renewal Date is December 31, 2009  
Iowa License Number 11310  
Pages or sheets covered by this seat 1 of 1.

JONES COUNTY ENGINEER'S OFFICE



19501 HWY. 64, ANAMOSA, IOWA 52205  
(319) 462-3785

