

2003 4165  
 FILED  
 RECORDERS OFFICE  
 JONES COUNTY IOWA

03 AUG 28 AM 9:52

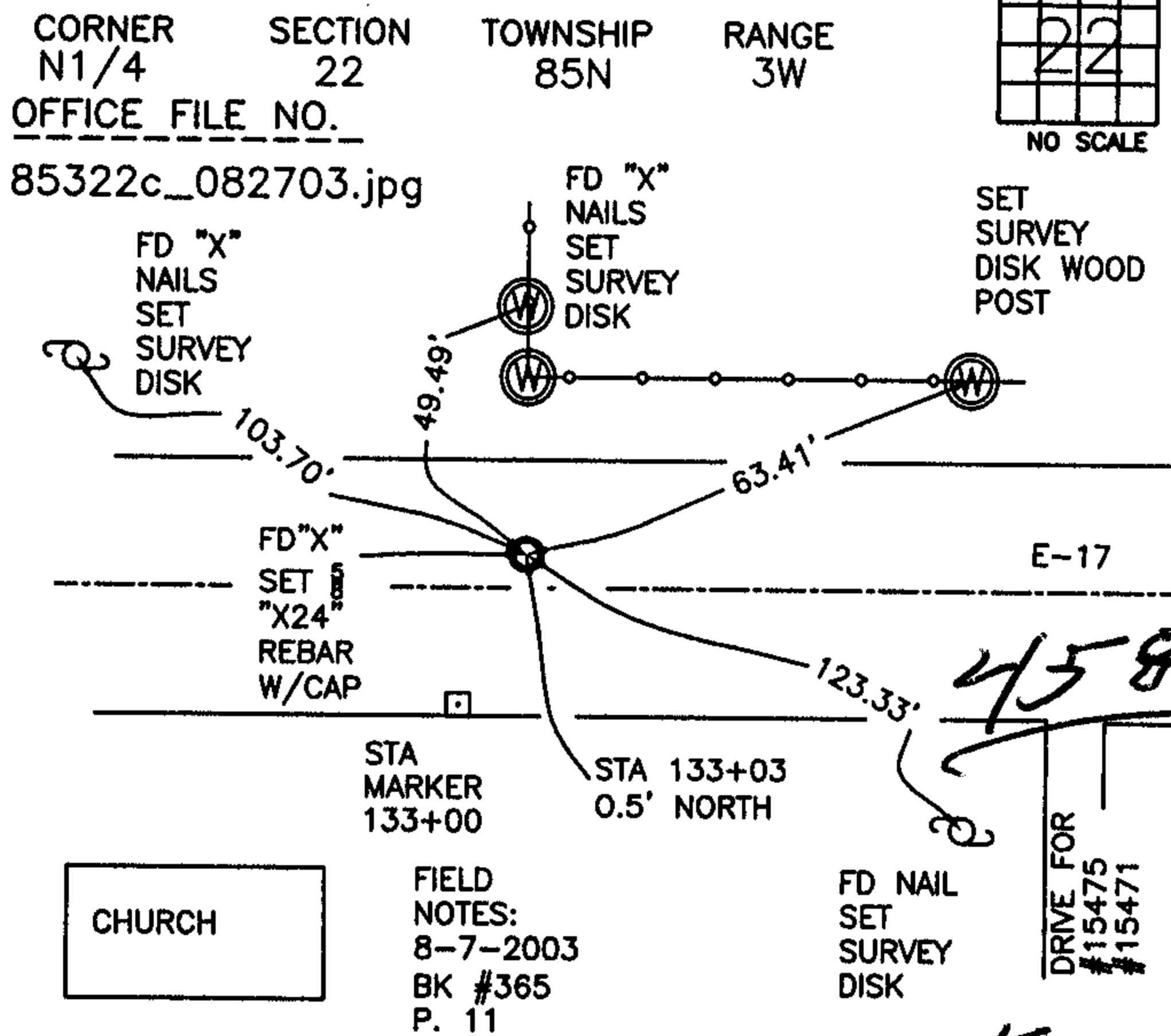
MARIE KRUTZFIELD  
 RECORDER

J.D. Tjepkes, L.S. JONES COUNTY ENGINEER'S OFFICE, 19501 HWY. 64, ANAMOSA, IOWA, 52205 (319)462-3785

# UNITED STATES PUBLIC LAND SURVEY CORNER CERTIFICATE

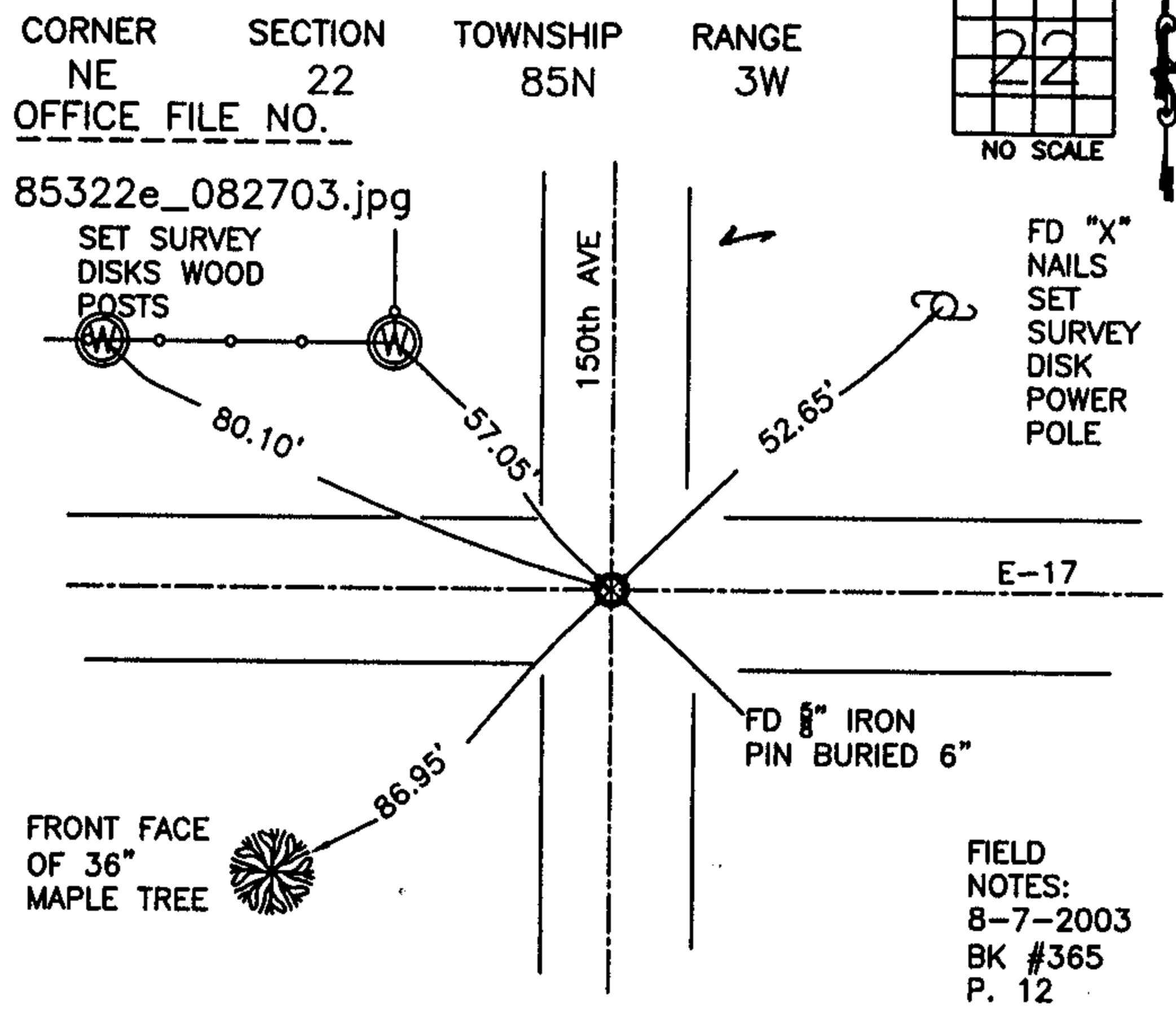
LAND SURVEY MONUMENTS SITUATED IN SECTION 22, TOWNSHIP 85  
 NORTH, RANGE 3 WEST OF THE 5TH P.M., JONES COUNTY, IOWA

### CORNERS TO BE INDEXED



PREVIOUSLY RECORDED IN BOOK 313, PAGE 179  
 MONUMENT DESCRIPTION AND HOW ESTABLISHED  
 PER TIES IN RECORDERS BK 313 P 179, LS#8165 (MEISNER), FD CUT "X"  
 AT STA. 133+03 0.5' NORTH OF CENTERLINE. DRILLED AND SET "X 24"  
 REBAR W/CAP #14807. RETIED AS INDICATED.

### CORNERS TO BE INDEXED



PREVIOUSLY RECORDED IN BOOK 313, PAGE 179  
 MONUMENT DESCRIPTION AND HOW ESTABLISHED  
 PER RECORDED TIES IN BK 313 P 179, LS # 8165 (MEISNER), FOUND 1/2"  
 IRON PIN BURIED 6". RETIED AS INDICATED.

### CORNERS TO BE INDEXED

CORNER	SECTION	TOWNSHIP	RANGE

OFFICE FILE NO. \_\_\_\_\_

PREVIOUSLY RECORDED IN BOOK \_\_\_\_\_, PAGE \_\_\_\_\_  
 MONUMENT DESCRIPTION AND HOW ESTABLISHED \_\_\_\_\_

### CORNERS TO BE INDEXED

CORNER	SECTION	TOWNSHIP	RANGE

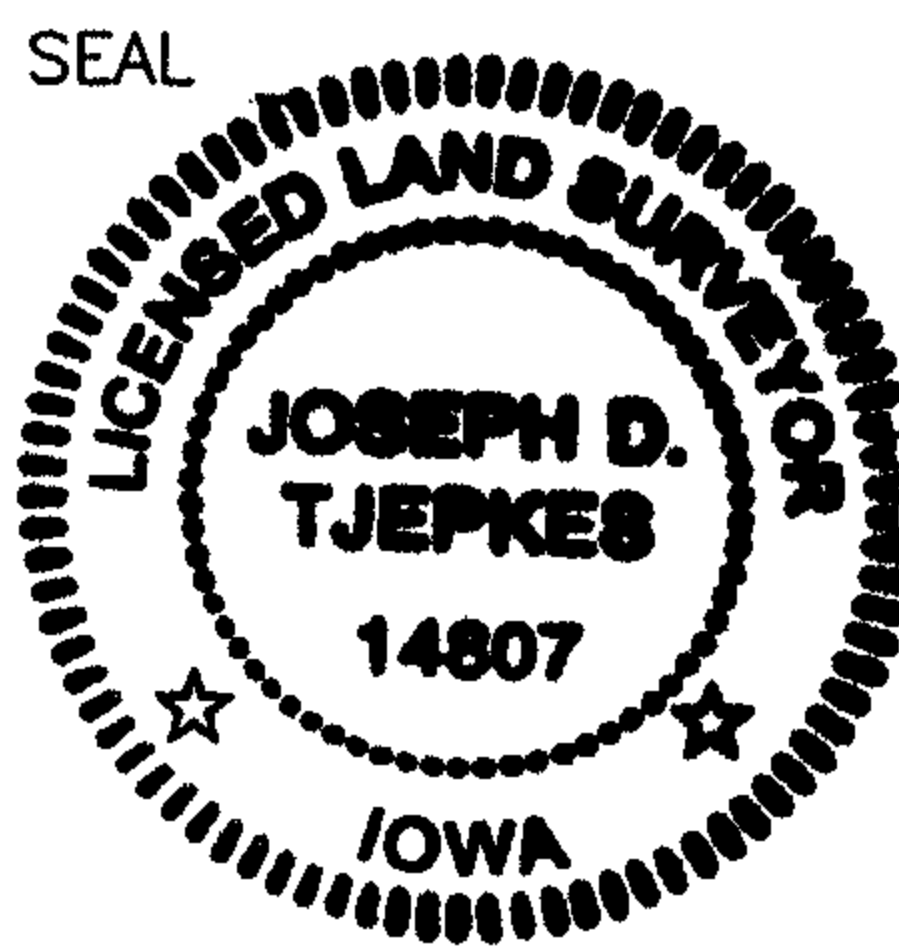
OFFICE FILE NO. \_\_\_\_\_

PREVIOUSLY RECORDED IN BOOK \_\_\_\_\_, PAGE \_\_\_\_\_  
 MONUMENT DESCRIPTION AND HOW ESTABLISHED \_\_\_\_\_

I hereby declare that this plat, survey or report was made by me or under my direct personal supervision and that I am a duly registered Land Surveyor under the laws of the State of Iowa.

Signed:

*Joseph D. Tjepkes* 8-27-03  
 Joseph D. Tjepkes L.S. Iowa Reg. No. 14807  
 My Registration Renewal Date is December 31, 2004



J.D. Tjepkes LS 14807  
 JONES COUNTY  
 ENGINEER'S OFFICE

19501 HWY. 64,  
 ANAMOSA, IOWA,  
 52205 (319)462-3785

# SECTION CORNER CERTIFICATE

OF  
 LAND SURVEY MONUMENTS SITUATED IN SECTION 22, TOWNSHIP 85 NORTH,  
 RANGE 3 WEST, OF THE FIFTH PRINCIPAL MERIDIAN, JONES COUNTY, IOWA.

PREVIOUSLY RECORDED IN BOOK \_\_\_\_\_ AT PAGE \_\_\_\_\_

FOR RECORDER'S USE

**REASON FOR PREPARING CERTIFICATE:**

- A) THERE IS NO CERTIFICATE FOR THE CORNER ON FILE WITH THE RECORDER OF THE COUNTY IN WHICH THE CORNER IS LOCATED.
- B) CORNER POSITION DIFFERS FROM THAT SHOWN IN THE PUBLIC RECORDS OF THE COUNTY IN WHICH THE CORNER IS LOCATED.
- C) THE CORNER MONUMENT HAS BEEN REPLACED OR MODIFIED.
- D) THE REFERENCE LINES REFERRED TO IN AN EXISTING PUBLIC RECORD ARE INCORRECT.

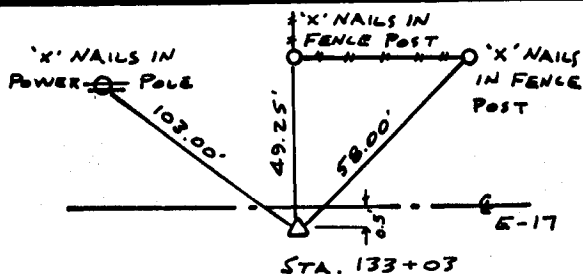
**MONUMENT DESCRIPTION AND REMARKS:**

N 1/4 CORNER CUT "X" IN PAVEMENT STA. 133+03 0.6' S. OF E

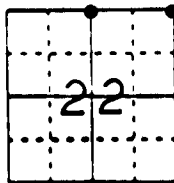
N.E. CORNER FOUND 5" PIN 4" BELOW SURFACE

## RECOVERY TIE DRAWING

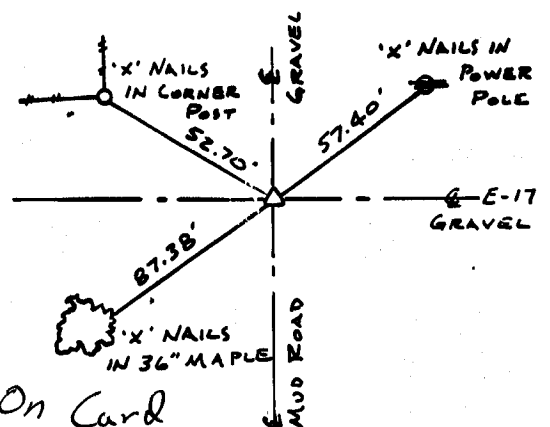
N 1/4 COR. 22-85-3



*On Card*  
 5/31/91  
 D.M.



N.E. COR. 22-85-3



*On Card*  
 5/31/91 D.M.

I, GLEN D. MEISNER, CERTIFY THAT THE CORNER LOCATION(S) SHOWN ON THIS RECORD WERE DETERMINED BY ME OR UNDER MY DIRECTION AND CONTROL AND THAT THIS U.S. PUBLIC LAND SURVEY MONUMENT RECORD IS CORRECT AND COMPLETE TO THE BEST OF MY KNOWLEDGE AND BELIEF.



*Glen D. Meisner* 1-2-91  
 GLEN D. MEISNER L.S. NO 8165 DATE

<p><b>LEGEND</b></p> <ul style="list-style-type: none"> <li>▲ EQUIPMENT CORNER</li> <li>○ 1/4" PIN SET</li> <li>— CENTERLINE</li> <li>--- EXISTING FENCE LINE</li> <li>--- RAIL LINE</li> </ul>	<p><b>U.S. PUBLIC LAND SURVEY RECORD</b></p>	<p><b>HALL AND HALL ENGINEERS, INC.</b>                  226 29TH STREET DRIVE S.E.                  CEDAR RAPIDS, IOWA 52403                  319-362-9548</p>
<p>R.W. 3</p>	<p>12-5-90</p>	<p>SCALE NONE</p>
<p>4406</p>		

85322e\_010291, 85322c\_010291