

SECTION CORNER CERTIFICATE

OF
 LAND SURVEY MONUMENTS SITUATED IN SECTION 23, TOWNSHIP 85 NORTH,
 RANGE 3 WEST, OF THE FIFTH PRINCIPAL MERIDIAN, JONES, COUNTY, IOWA.

PREVIOUSLY RECORDED IN BOOK _____ AT PAGE _____

FOR RECORDER'S USE

- REASON FOR PREPARING CERTIFICATE:
- A) THERE IS NO CERTIFICATE FOR THE CORNER ON FILE WITH THE RECORDER OF THE COUNTY IN WHICH THE CORNER IS LOCATED.
 - B) CORNER POSITION DIFFERS FROM THAT SHOWN IN THE PUBLIC RECORDS OF THE COUNTY IN WHICH THE CORNER IS LOCATED.
 - C) THE CORNER MONUMENT HAS BEEN REPLACED OR MODIFIED.
 - D) THE REFERENCE TIES REFERRED TO IN AN EXISTING PUBLIC RECORD ARE INCORRECT.

1999 3182

FILED
 RECORDERS OFFICE
 JONES COUNTY IOWA

99 SEP -8 AM 10:14

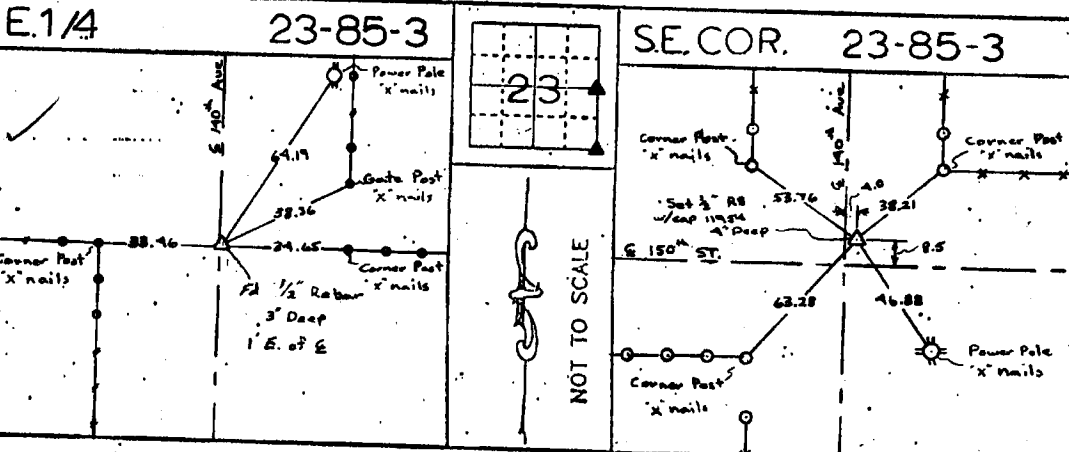
MARIE KRUTZFIELD
 RECORDER *6.00 pd*

MONUMENT DESCRIPTION AND REMARKS :

*East 1/2 Section 23 - Township 85 North - Range 3 West Fourth 1/2" Rebar 3" Deep
 1' East of S. 150th Ave.*

*Southeast Corner Section 23 - Township 85 North - Range 3 West Set 1/2" Rebar w/cap 11954
 3" Deep 4' East of S. 150th Ave. & 8.5' North of E. 150th St.*

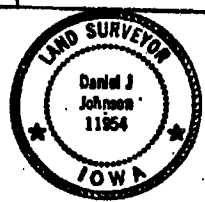
RECOVERY TIE DRAWING



JE
26

DANIEL J. JOHNSON - CERTIFY THAT THE CORNER LOCATION(S) SHOWN ON THIS RECORD WERE DETERMINED BY ME OR UNDER MY DIRECTION AND CONTROL AND THAT THIS U.S. PUBLIC LAND SURVEY MONUMENT RECORD IS CORRECT AND COMPLETE TO THE BEST OF MY KNOWLEDGE AND BELIEF.

Daniel J. Johnson 9-8-99
 DANIEL J. JOHNSON L.S. NO 11954 DATE



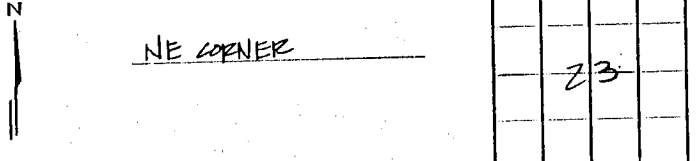
GOVERNMENT CORNER PROPERTY CORNER FOUND 1/2" 150' W/ L.S. CAP SET --- EXISTING FENCE LINE --- PROPERTY LINE	SHEET FILE U.S. PUBLIC LAND SURVEY RECORD PROJECT TITLE Ruth School	HALL AND HALL ENGINEERS, INC. 209 29TH STREET N.E. CEDAR RAPIDS, IOWA 52402 (319) 362-9548
DRAWN BY JSR	CHECKED BY DJJ	DATE 9/6/99
SCALE None	P. NO. 5390	

853230-090899
 853262-090899

UNITED STATES PUBLIC LAND SURVEY CORNER CERTIFICATE

LAND SURVEY MONUMENTS SITUATED IN SECTION 23, TOWNSHIP 85 NORTH RANGE 3 WEST OF THE 5TH P.M., JONES COUNTY, IOWA.

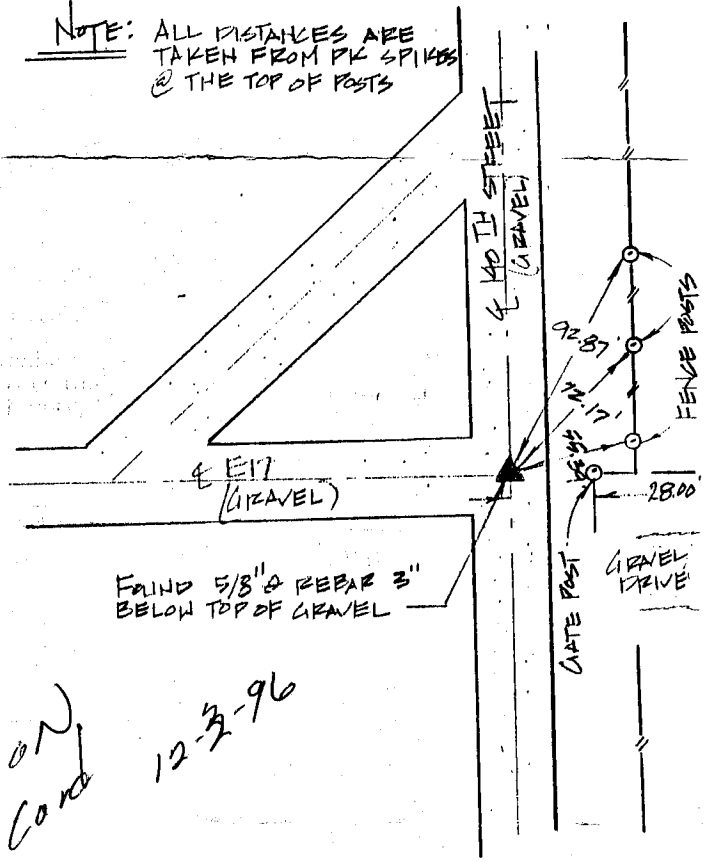
NO SCALE



NE CORNER

23

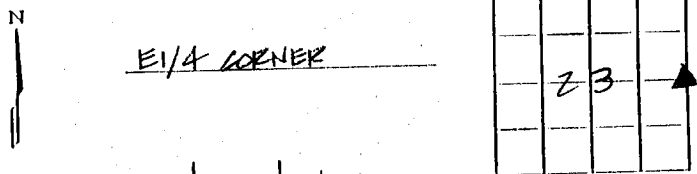
NOTE: ALL DISTANCES ARE TAKEN FROM PK SPIKES @ THE TOP OF POSTS



FOUND 5/8" REBAR 3" BELOW TOP OF GRAVEL

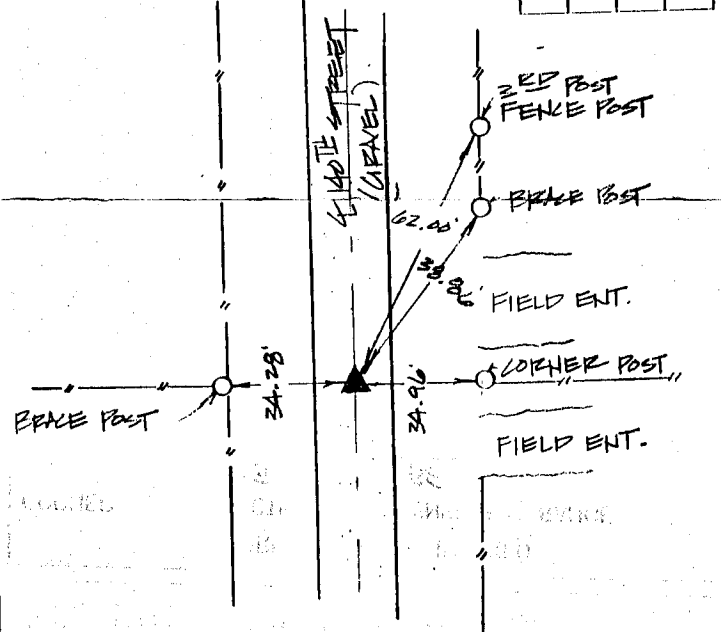
ON CORNER 12-3-96

NO SCALE

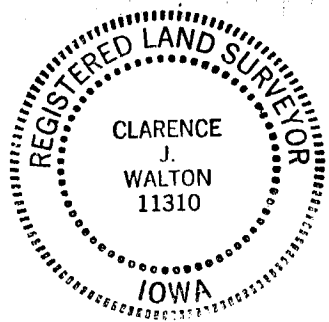


E1/4 CORNER

23



NOTE: ALL DISTANCES ARE TAKEN FROM PK SPIKES @ TOP OF POSTS.



ON CORNER 12-3-96

PREVIOUSLY RECORDED IN BOOK _____ PAGE _____

MONUMENT DESCRIPTION AND HOW ESTABLISHED FOUND
5/8" REBAR @ THE NE CORNER OF SEC. 23, TWP 85N-
R3W - 5TH P.M. JONES COUNTY, IA. PER COUNTY TIES

PREVIOUSLY RECORDED IN BOOK _____ PAGE _____

MONUMENT DESCRIPTION AND HOW ESTABLISHED FOUND
1/2" REBAR @ THE E1/4 CORNER OF SEC. 23 - TWP.
85N - R3W - 5TH P.M. JONES COUNTY, IA.

I hereby declare that this plat, survey or report was made by me or under my direct personal supervision and that I am a duly registered Land Surveyor under the laws of the State of Iowa.

Signed Clarence J. Walton Date 11/21/96
 Clarence J. Walton L.S. Iowa Reg No. 11310
 My Registration Renewal Date Is December 31, 1997

CORNER	SECTION	TOWNSHIP	RANGE
NE	23	85	3
E1/4	23	85	3

BRAIN ENGINEERING, INC.
 777 10TH STREET
 MARION, IOWA 52302
 (319) 373-1318