

Jones County Marie Krutzfield Recorder
 Fee Book 2012 0495
 02/29/2012 @1148AM # Pages 1
 ZSC SEC COR CERT
 Total Fees: \$7.00

Prepared by: SCHNEIDER Land Surveying and Planning, Inc. P.O. Box 128 Farley, Iowa 52046 563-744-3631

UNITED STATES PUBLIC LAND SURVEY CORNER CERTIFICATE OF

Land Survey Monuments situated in Section 24, Township 85 North, Range 3 West of the Fifth Principal Meridian, Jones County, Iowa.

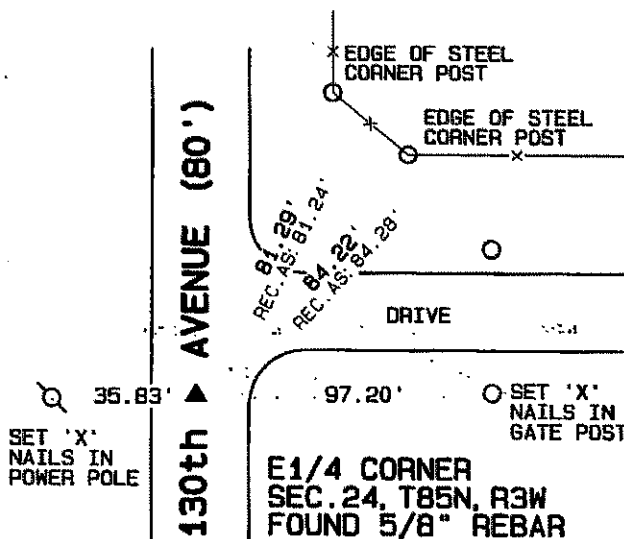
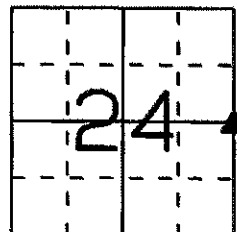
Previously recorded BOOK 296, PAGE 59
(BOOK, PAGE / INST. NO. / CABINET, SLIDE)

(Show reason for preparing this certificate, the evidence and detailed procedures used in establishing the corner positions and monumentation found or placed.)

Monument Description and Remarks: A 5/8" REBAR WAS FOUND AT THE E1/4 CORNER OF SECTION 24, T85N, R3W OF THE 5th P.M., AS ILLUSTRATED IN A SECTION CORNER CERTIFICATE RECORDED IN JONES COUNTY RECORDER'S OFFICE IN BOOK 296, PAGE 59. ONLY TWO TIES REMAINED, SO NEW REFERENCE TIES WERE ADDED.

PLAN - VIEW

(Show a minimum of three reference ties to durable physical objects, relevant monuments and physical conditions that will enable recovery of the corner.)



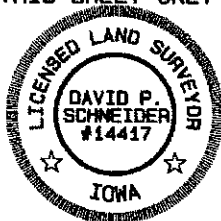
I hereby certify that this land surveying document was prepared and the related survey work was performed by me or under my direct personal supervision and that I am a duly licensed Land Surveyor under the laws of the State of Iowa.

David P. Schneider 2/27/2012
 David P. Schneider P.L.S. #14417 Date:
 My license renewal date is December 31, 2013.

Pages or sheets covered by this seal: THIS SHEET ONLY

SCHNEIDER
 Land Surveying & Planning, Inc.

P.O. Box 128 Farley, Iowa 52046
 Ph. #563-744-3631 Fax#563-744-3629



List Corners to be Indexed

Corners	Section	Twp	Range
E1/4 CORNER	24	85N	3W

UNITED STATES PUBLIC LAND SURVEY CORNER CERTIFICATE

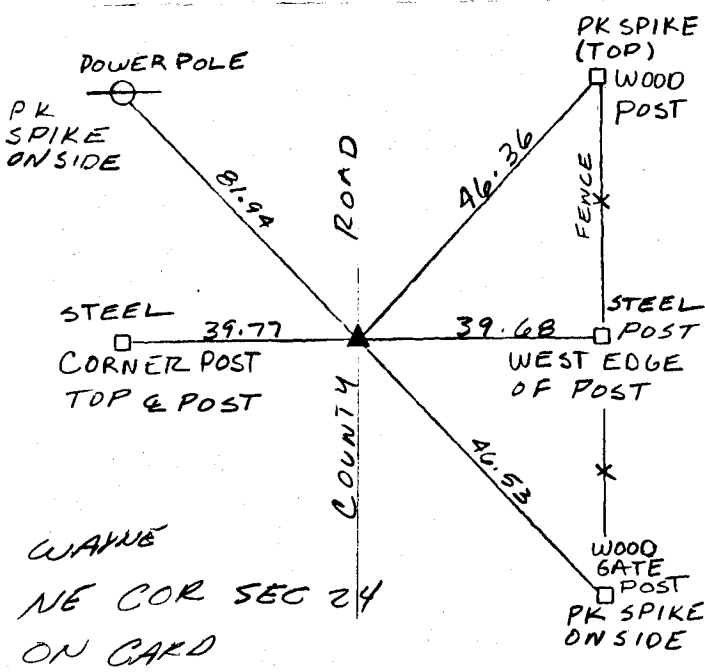
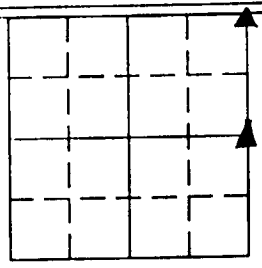
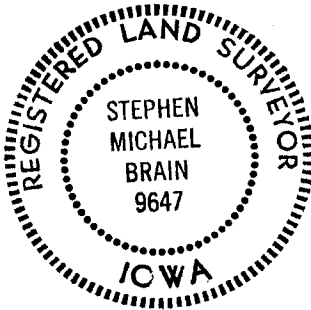
LAND SURVEY MONUMENTS SITUATED IN SECTION 24, TOWNSHIP 85,
RANGE 3W, OF THE 5th. PRINCIPAL MERIDIAN, JONES,
COUNTY, IOWA.

N NO SCALE

RECOVERY TIE DRAWING

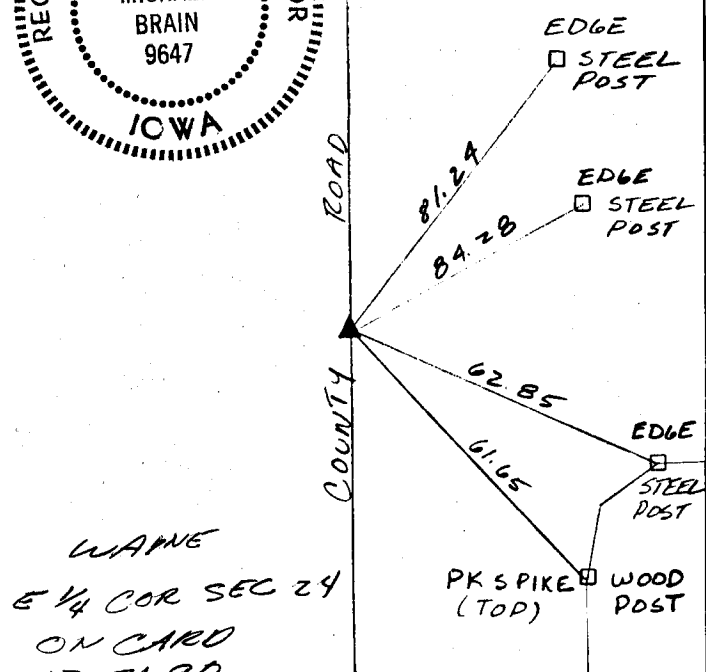
NE CORNER

E 1/4 CORNER



WAYNE
NE COR SEC 24
ON CARD
12-21-90
M.S.

PREVIOUSLY RECORDED IN BOOK _____ PAGE _____
MONUMENT DESCRIPTION AND HOW ESTABLISHED: FOUND 5/8" REROD



WAYNE
E 1/4 COR SEC 24
ON CARD
12-21-90
M.S.

PREVIOUSLY RECORDED IN BOOK _____ PAGE _____
MONUMENT DESCRIPTION AND HOW ESTABLISHED: FOUND 5/8" REROD

I HEREBY DECLARE THAT THE SURVEY WORK WAS COMPLETED AND THIS CERTIFICATE WAS PREPARED BY ME OR UNDER MY DIRECT PERSONAL SUPERVISION AND THAT I AM A DULY REGISTERED LAND SURVEYOR UNDER THE LAWS OF THE STATE OF IOWA.

Stephen Michael Brain 12-7-90
STEPHEN MICHAEL BRAIN, P.E. & L.S. 9647

List Corners to be Indexed

Corners	Section	Twp	Range
SE	13	85	3
SW	18	85	2
NW	19	85	2
W1/4	19	85	2

PAMENT ENGINEERING, INC.
HIAWATHA, IOWA

85324e-120790, 853240-120790