

Instrument #: 2016-1407
 05/27/2016 10:23:52 AM Total Pages: 1
 ZSC SECTION CORNER CERTIFICATE
 Recording Fee: \$7.00 Transfer Tax: \$0
 Sheri L. Jones, Recorder, Jones County Iowa



PREPARED BY: RANDALL L. RATTENBORG 105 WEST MAIN STREET MANCHESTER, IA 52057, 563-927-2434

UNITED STATES PUBLIC LAND SURVEY CORNER CERTIFICATE

Land Survey Monuments situated in Section 23, Township 85 North, Range 3 West of the Fifth Principal Meridian,
Jones County, Iowa.

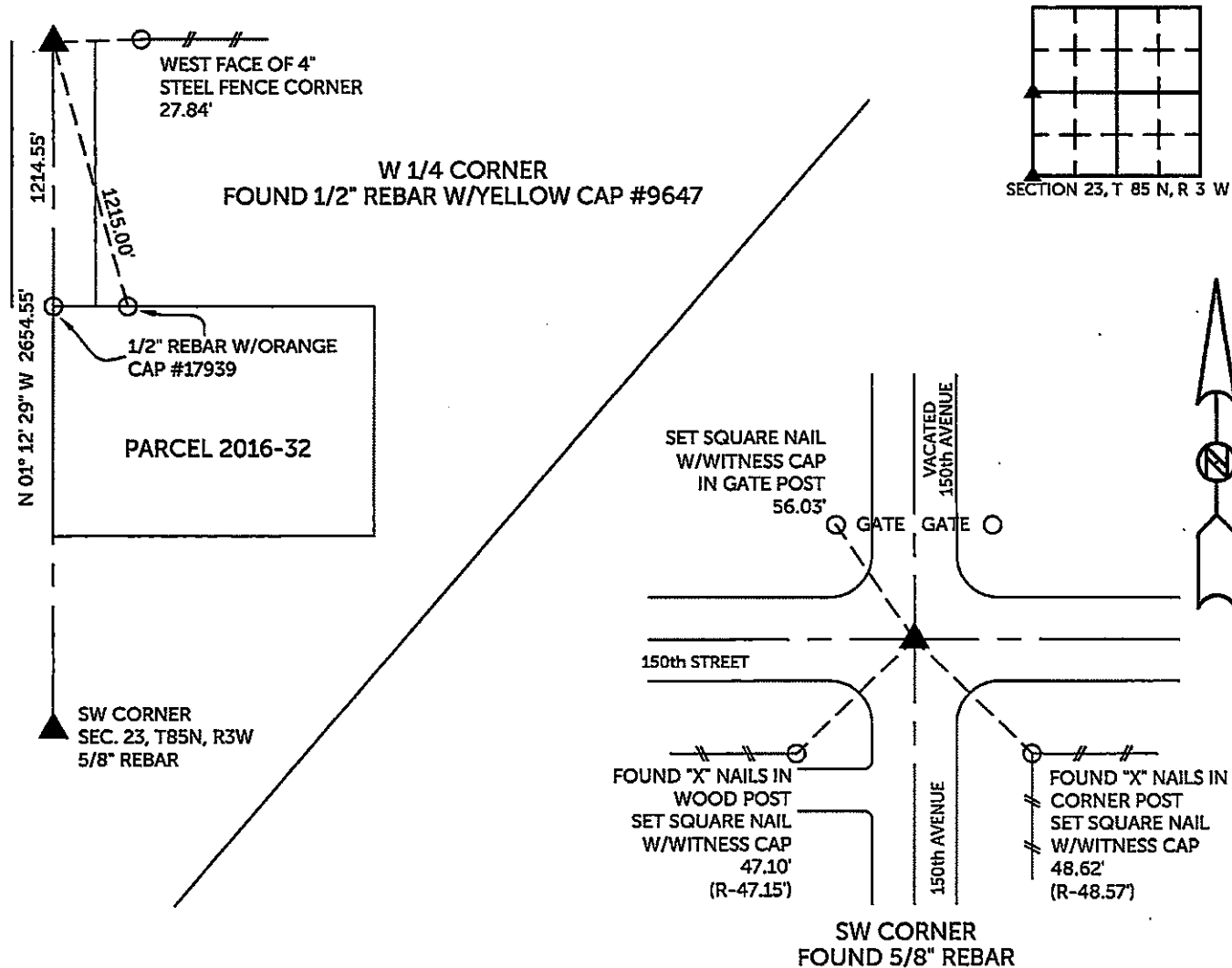
Previously recorded in County Recorder's Office in SEE DESCRIPTIONS OF CORNERS
(book, page, document number, etc.)

SW CORNER, Found 5/8" rebar. Previous Corner Certificate recorded in File 97 98, Page 1649. Corner being re-tied due to missing tie objects.

W 1/4 CORNER, Found 1/2" rebar w/yellow cap #9647. Previous Corner Certificate recorded in Book 2002, Page 1382. Corner being re-tied due to missing tie objects.

PLAN VIEW

(Show a minimum of three reference ties to durable physical objects, relevant monuments and physical conditions that will enable recovery of the corner.)

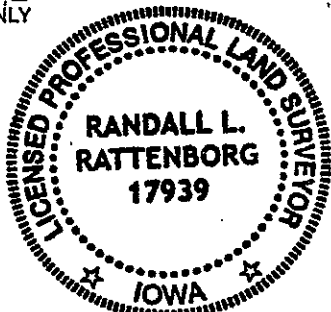


TIES ARE TO PLAT OF PARCEL 2016-32
 IN SECTION 23, T 85 N, R 3 W

BURRINGTON GROUP, INC. PROJECT NO.16-053

I HEREBY CERTIFY THAT THIS LAND SURVEYING DOCUMENT
 WAS PREPARED AND THE RELATED SURVEY WORK WAS
 PERFORMED BY ME OR UNDER MY DIRECT PERSONAL
 SUPERVISION AND THAT I AM A DULY LICENSED PROFESSIONAL
 LAND SURVEYOR UNDER THE LAWS OF THE STATE OF IOWA.

SEAL COVERS THIS SHEET ONLY



[Signature] *5/26/2016*
 Randall L. Rattenborg, P.L.S. License #17939 Date
 My license renewal date is December 31, 2017

List Corners to be Indexed: Section Township Range
 SW CORNER 23 T 85N R 3 W
 W 1/4 CORNER

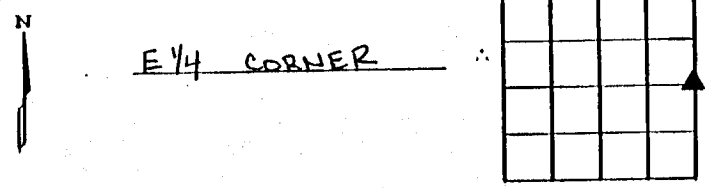
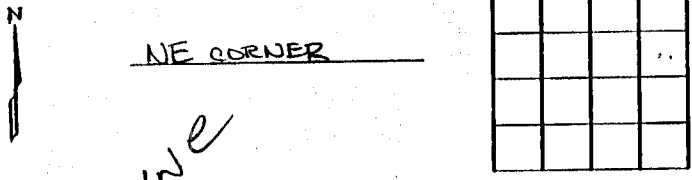
BURRINGTON GROUP, INC.
 Civil Engineering | Land Surveying
 105 W. Main Street Manchester, Iowa 52057

UNITED STATES PUBLIC LAND SURVEY CORNER CERTIFICATE

LAND SURVEY MONUMENTS SITUATED IN SECTION 27, TOWNSHIP 85 NORTH
 RANGE 3 WEST OF THE 5TH P.M., JONES COUNTY, IOWA.

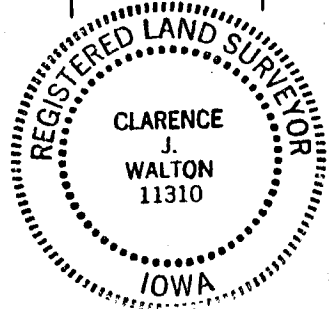
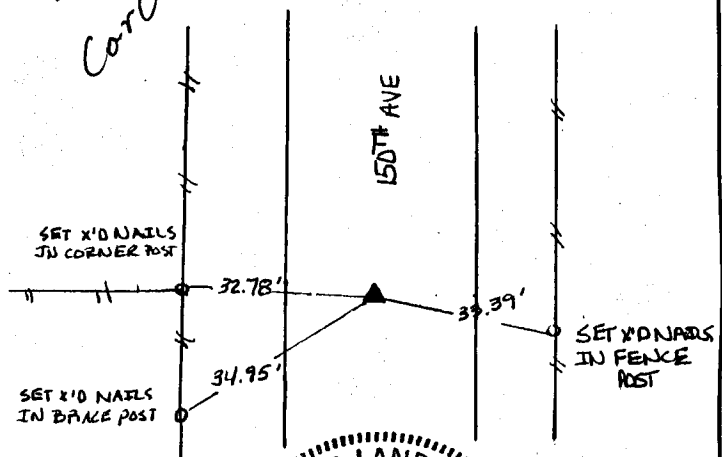
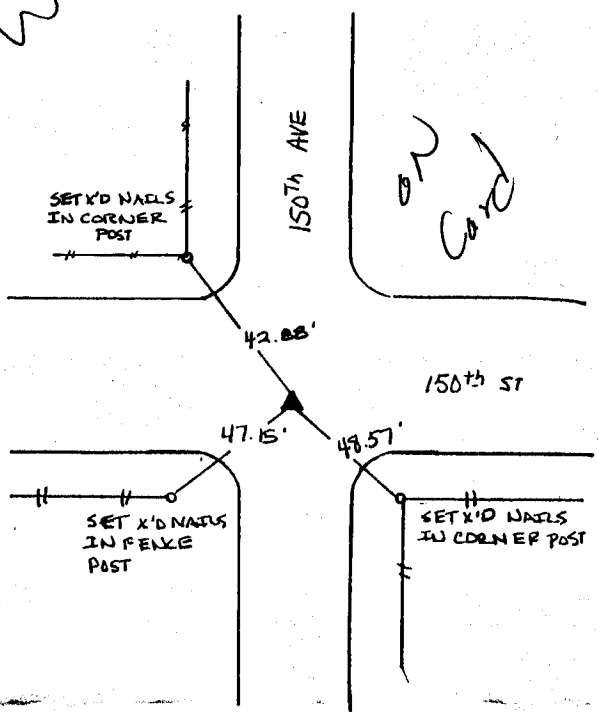
NO SCALE

NO SCALE



Wayne

on card



PREVIOUSLY RECORDED IN BOOK _____ PAGE _____

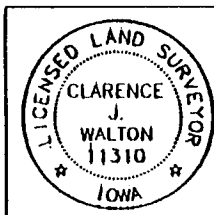
PREVIOUSLY RECORDED IN BOOK _____ PAGE _____

MONUMENT DESCRIPTION AND HOW ESTABLISHED _____

MONUMENT DESCRIPTION AND HOW ESTABLISHED _____

FOUND 5/8" REBAR 16" BELOW SURFACE

FOUND 5/8" REBAR 16" BELOW SURFACE



I hereby certify that this land surveying document and the related survey work was performed by me or under my direct personal supervision and that I am a duly licensed Land Surveyor under the laws of the State of Iowa.
 Signed Clarence J. Walton Date 11/25/97
 Clarence J. Walton, L.S.
 My License Renewal Date is December 31, 1997.
 License Number 11310
 Pages or sheets covered by this seal: 1 of 1

CORNER	SECTION	TOWNSHIP	RANGE
NE	27	85	3
E 1/4	27	85	3

BRAIN ENGINEERING, INC.
 603 WEST MAIN STREET
 ANAMOSA, IOWA 52205
 (319) 482-6782