

Instrument #: 2016-0348
02/08/2016 11:12:21 AM Total Pages: 1
ZSC SECTION CORNER CERTIFICATE
Recording Fee: \$7.00 Transfer Tax: \$0
Sheri L. Jones, Recorder, Jones County Iowa



-PREPARED BY AND RETURN TO: MMS CONSULTANTS, INC. 1917 S. GILBERT ST. IOWA CITY, IOWA 52240 (319)351-8282-

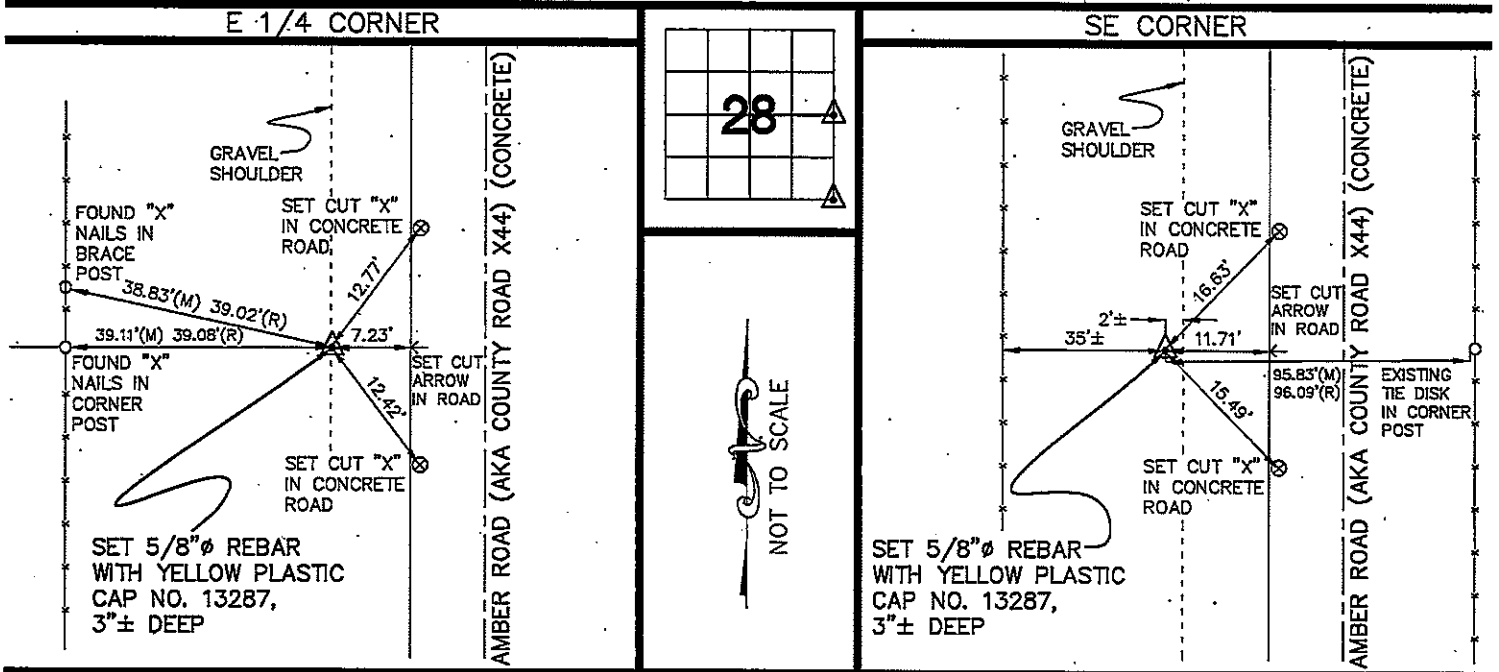
U.S. PUBLIC LAND SURVEY CORNER CERTIFICATE

FOR LAND SURVEY MONUMENTS SITUATED IN SECTION 28, TOWNSHIP 85 NORTH, RANGE 3 WEST, OF THE FIFTH PRINCIPAL MERIDIAN, JONES COUNTY, IOWA

REASON FOR PREPARING CERTIFICATE:

- A) THERE IS NO CERTIFICATE FOR THE CORNER ON FILE WITH THE RECORDER OF THE COUNTY IN WHICH THE CORNER IS LOCATED.
- B) CORNER FOUND, OR ITS POSITION, DIFFERS FROM PREVIOUSLY RECORDED AS NOTED IN THE NARRATIVE SECTION.
- C) THE CORNER MONUMENT WAS REPLACED OR MODIFIED.
- D) THE REFERENCE TIES REFERRED TO IN AN EXISTING PUBLIC RECORD ARE NOT CORRECT.

RECOVERY TIE DRAWING

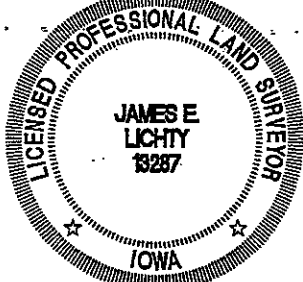


MONUMENT DESCRIPTION AND REMARKS :
THE PIN DESCRIBED AND SHOWN ON THE PLAT RECORDED IN PLAT BOOK T AT PAGE 168 IN THE JONES COUNTY RECORDER'S OFFICE APPEARS TO HAVE BEEN DESTROYED OR BURIED WITH ROAD CONSTRUCTION. A 5/8"Ø REBAR WITH YELLOW PLASTIC CAP NO. 13287 WAS SET 3"± DEEP AT THE LOCATION SHOWN ON SAID PLAT. THIS CORNER WAS PREVIOUSLY CERTIFIED IN BOOK 313 AT PAGE 198 IN THE RECORD OF THE JONES COUNTY RECORDER'S OFFICE.

MONUMENT DESCRIPTION AND REMARKS :
THE PIN DESCRIBED AND SHOWN ON THE PLAT RECORDED IN PLAT BOOK T AT PAGE 168, IN THE JONES COUNTY RECORDER'S OFFICE APPEARS TO HAVE BEEN DESTROYED OR BURIED WITH ROAD CONSTRUCTION. A 5/8"Ø REBAR WITH YELLOW PLASTIC CAP NO. 13287 WAS SET 3"± DEEP AT THE LOCATION SHOWN ON SAID PLAT. THIS CORNER WAS PREVIOUSLY CERTIFIED IN FEE BOOK 2008 0422 IN THE RECORD OF THE JONES COUNTY RECORDER'S OFFICE.

I hereby certify that this land surveying document was prepared and the related survey work was performed by me or under my direct personal supervision and that I am a duly licensed Professional Land Surveyor under the laws of the State of Iowa.

James E. Lichty
JAMES E. LICHTY
Iowa Lic. No. 13287
2/5 2016
My license renewal date is December 31, 20 16.



SECTION CORNER CERTIFICATE

OF
 LAND SURVEY MONUMENTS SITUATED IN SECTION 28, TOWNSHIP 85 NORTH,
 RANGE 3 WEST, OF THE FIFTH PRINCIPAL MERIDIAN, JONES, COUNTY, IOWA.

PREVIOUSLY RECORDED IN BOOK _____ AT PAGE _____.

FOR RECORDER'S USE

REASON FOR PREPARING CERTIFICATE:

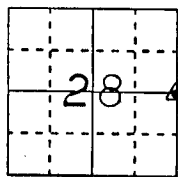
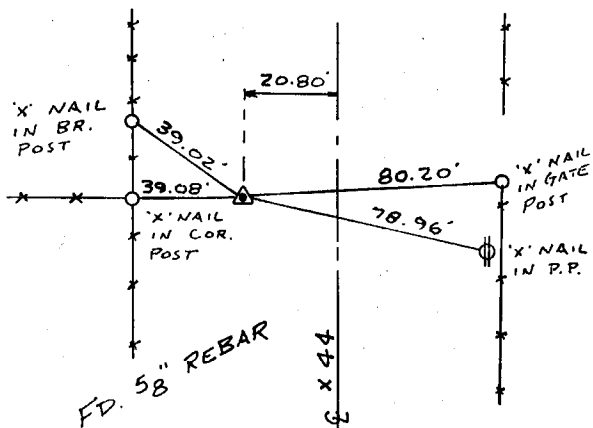
- A) THERE IS NO CERTIFICATE FOR THE CORNER ON FILE WITH THE RECORDER OF THE COUNTY IN WHICH THE CORNER IS LOCATED.
- B) CORNER POSITION DIFFERS FROM THAT SHOWN IN THE PUBLIC RECORDS OF THE COUNTY IN WHICH THE CORNER IS LOCATED.
- C) THE CORNER MONUMENT HAS BEEN REPLACED OR MODIFIED.
- D) THE REFERENCE TIES REFERRED TO IN AN EXISTING PUBLIC RECORD ARE INCORRECT.

MONUMENT DESCRIPTION AND REMARKS :

E 4 CORNER SECTION 28-T85N-R3W FOUND 58" REBAR
FLUSH WITH GROUND 20.80' WEST OF E JOINT OF
COUNTY ROAD X-44 ON LINE WITH FENCE WEST

RECOVERY TIE DRAWING

E 4 28-85-3



NOT TO SCALE

ON CARD 2-6-92 M.S.

I, GLEN D. MEISNER, -CERTIFY THAT THE CORNER LOCATION(S) SHOWN ON THIS RECORD WERE DETERMINED BY ME OR UNDER MY DIRECTION AND CONTROL AND THAT THIS U.S. PUBLIC LAND SURVEY MONUMENT RECORD IS CORRECT AND COMPLETE TO THE BEST OF MY KNOWLEDGE AND BELIEF.

Glen D. Meisner 1-30-92
 GLEN D. MEISNER L.S. NO 8165 DATE



LEGEND
 ▲ GOVERNMENT CORNER
 ○ 5/8" TIE PIN SET
 --- CENTERLINE
 -X-X- EXISTING FENCE LINE
 - - - - R.O.W. LINE

SHEET TITLE: U.S. PUBLIC LAND SURVEY RECORD

PROJECT TITLE: MIKE BOWMAN SURVEY

HALL AND HALL ENGINEERS, INC.
 226 29TH STREET DRIVE S.E.
 CEDAR RAPIDS, IOWA 52403
 319-362-9548

D W N R.W.B.

C K G.D.M.

A P P

D A T E 12-19-91

S C A L E NONE

F N O B 0T23

P N O P R O J 4613

853280-013092