

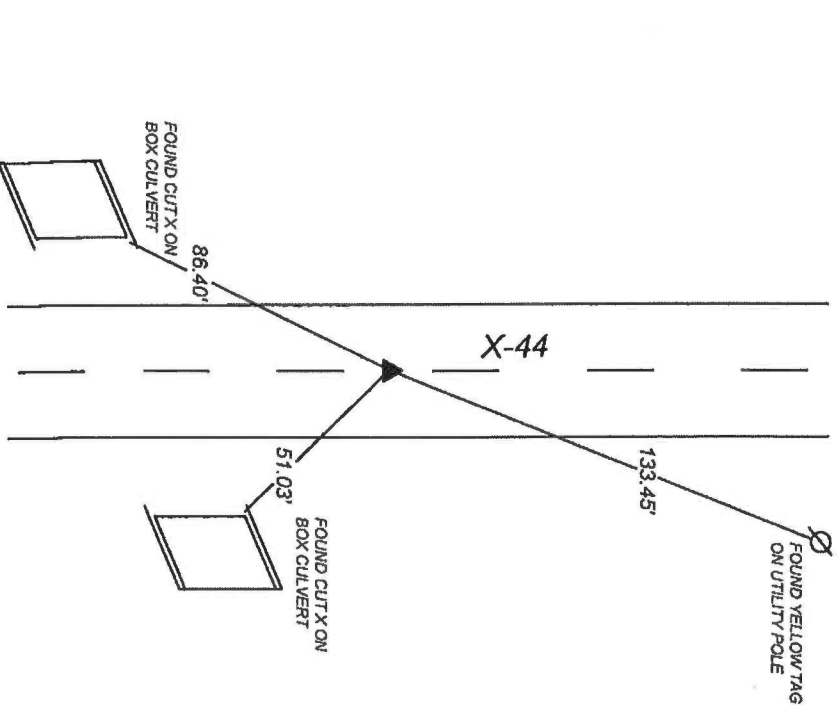
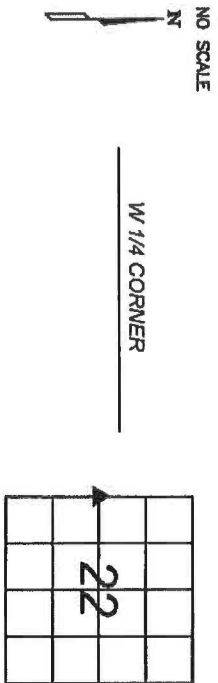


PREPARED BY

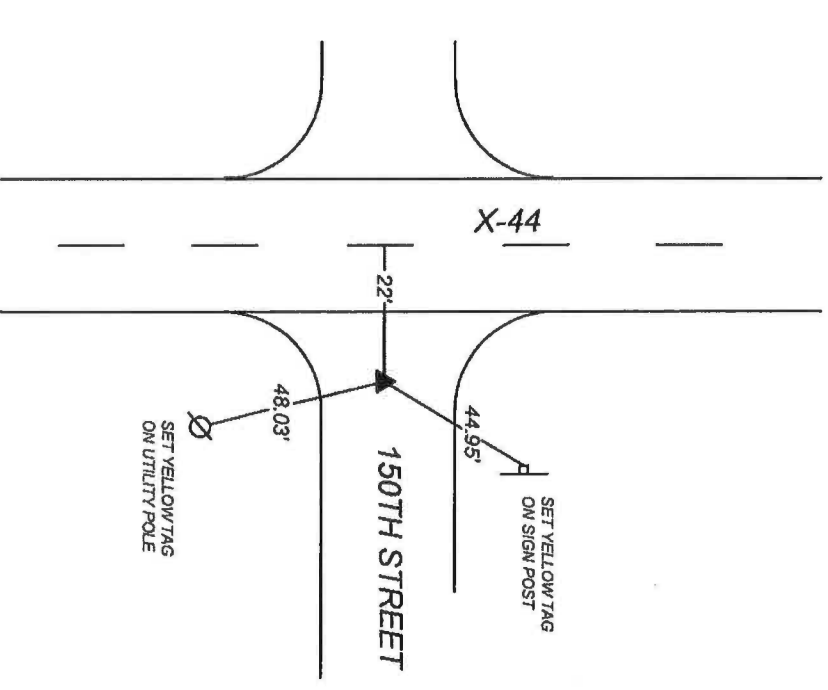
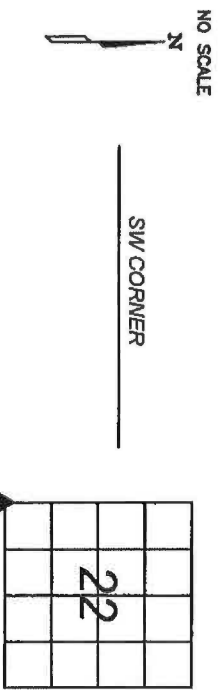
STEPHEN MICHAEL BRAIN, BRAIN ENGINEERING, INC., 1540 MIDLAND COURT NE, CEDAR RAPIDS, IOWA PH. (319) 294-9424

UNITED STATES PUBLIC LAND SURVEY CORNER CERTIFICATE

LAND SURVEY MONUMENTS SITUATED IN SECTION 22, TOWNSHIP 85 NORTH
RANGE 3 WEST OF THE 5TH P.M., JONES COUNTY, IOWA.



PREVIOUSLY RECORDED IN BOOK 2018 PAGE 1875
MONUMENT DESCRIPTION AND HOW ESTABLISHED _____
FOUND CUT X WITH MAG NAIL 0.2' EAST OF CENTERLINE OF X-44.
LOCATION MATCHED ONE DIMENSION SHOWN ON TIES RECORDED
IN FEEBOOK 2008 1875 AND DIMENSION SHOWN FROM W 1/4 TO SW
CORNER ON ACQUISITION PLAT PARCEL NO. 2007-16.



PREVIOUSLY RECORDED IN BOOK 2015 PAGE 3129
MONUMENT DESCRIPTION AND HOW ESTABLISHED _____
FOUND $\frac{3}{4}$ " REBAR W/OPC 22' EAST OF CENTERLINE OF X-44 AND 10"
BELOW CENTERLINE OF 150TH STREET. LOCATION MATCHED TIES
RECORDED IN FEEBOOK 2015-3129 AND DIMENSION SHOWN FROM
W 1/4 TO SW CORNER ON ACQUISITION PLAT PARCEL NO. 2007-16.



I hereby certify that this land surveying document
and the related survey work was performed by me
or under my direct personal supervision and that
I am a duly licensed Land Surveyor under the laws
of the State of Iowa.
Signed
Kevin F. Bradshaw, L.S.
My License Renewal Date is December 31, 2026
License Number 17543
Pages or sheets covered by this seal: 1/1

CORNERS TO BE INDEXED

CORNER	SECTION	TOWNSHIP	RANGE
W 1/4 CORNER	22	T85N	R3W
SW CORNER	22	T85N	R3W

☐ A. THERE IS NO CERTIFICATE FOR THE CORNER ON FILE
WITH THE RECORDER OF THE COUNTY IN WHICH THE
CORNER IS LOCATED
☐ B. THE SURVEYOR IN RESPONSIBLE CHARGE OF THE LAND
SURVEYING ACCEPTS A CORNER POSITION WHICH DIFFERS
FROM THAT SHOWN IN THE PUBLIC RECORDS OF THE
COUNTY IN WHICH THE CORNER IS LOCATED.
☒ C. THE CORNER MONUMENT IS REPLACED OR MODIFIED IN
ANY WAY.
☐ D. THE REFERENCE TIES REFERRED TO IN AN EXISTING
PUBLIC RECORD ARE NOT CORRECT.

BRAIN ENGINEERING, INC.
1540 MIDLAND COURT NE
CEDAR RAPIDS, IOWA 52402
(319) 294-9424



Instrument #: 2015-3129
10/30/2015 10:21:15 AM Total Pages: 1
ZSC SECTION CORNER CERTIFICATE
Recording Fee: \$7.00 Transfer Tax: \$0
Sheri L. Jones, Recorder, Jones County Iowa

Prepared by/Return to: FERR GRAHAM, 1919 210th Street, Manchester IA 52057 - Ph: (563)927-2060

UNITED STATES PUBLIC LAND SURVEY CORNER CERTIFICATE

OF

Land Survey Monuments situated in Section 28, Township 85 North, Range

3 West of the Fifth Principal Meridian, Jones County, Iowa.

Previously recorded in (1) Bk. 2001, Pg. 1602 in County Recorder's Office.
(book, page, document number, etc.)

(Show reason for preparing this certificate, the evidence and detailed procedures used in establishing the corner positions and monumentation found or placed.)

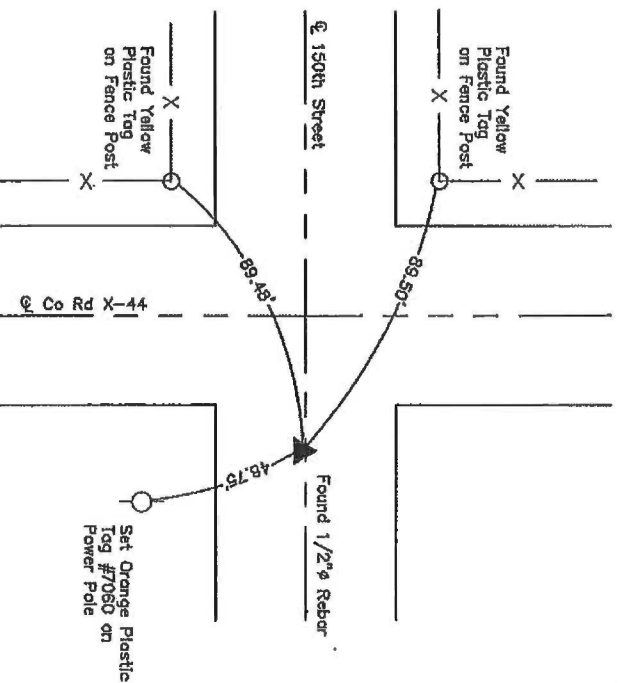
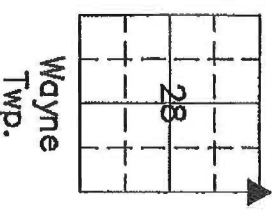
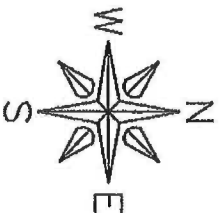
Monument Description and Remarks: (1) NE Corner of Section 28-T85N-R3W.

Section corner information was obtained before concrete overlay project. Found 1/2" rebar in centerline of 150th Street (gravel road). Set one new tie.

PLAN VIEW

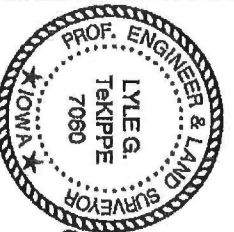
Project Number 15-321

Show a minimum of three reference ties to durable physical objects, relevant monuments and physical conditions that will enable recovery of the corner.



(1) NE Corner of Sec. 28-T85N-R3W

Found 1/2" Rebar with Orange Plastic Cap in Gravel



I hereby certify that this land surveying document was prepared and the related survey work was performed by me or under my direct personal supervision and that I am a duly licensed Land Surveyor under the laws of the State of Iowa.

Lyle G. Tekippe, P.E. & PLS. Date 10-28-15
License Number: 7060
My license renewal date is December 31, 2016.
Sheets covered by this seal: This Sheet Only

List Corners to be Indexed

Corners	Section	Twp.	Range
NE.	28	85N	3W

G:\CSD\15\15-321\15-321-LEGAL.dwg

2001 1602
FILED
RECORDERS OFFICE
JONES COUNTY IOWA

01 MAY 15 AM 10:18
MARIE KRUTZFIELD
RECORDER No Fee

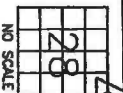
J.D. TJEPKES, LS. JONES COUNTY ENGINEER'S OFFICE, 19501 HWY. 64, ANAMOSA, IOWA, 52205 (319)462-3785

UNITED STATES PUBLIC LAND SURVEY CORNER CERTIFICATE

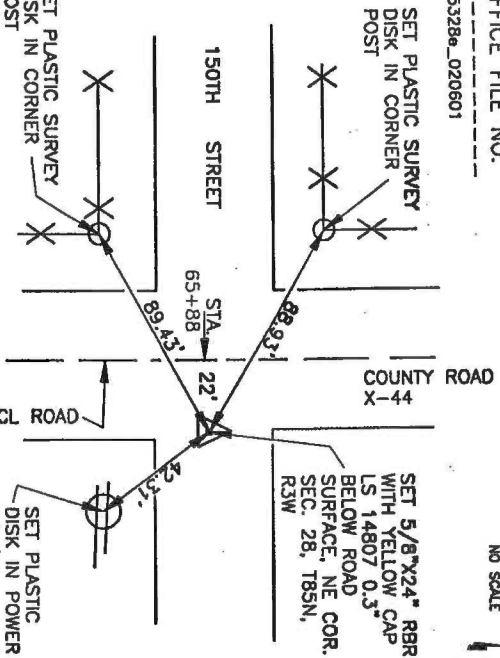
LAND SURVEY MONUMENTS SITUATED IN SECTION 28, TOWNSHIP 85
NORTH, RANGE 3 WEST OF THE 5TH P.M., JONES COUNTY, IOWA

CORNERS TO BE INDEXED

CORNER SECTION TOWNSHIP RANGE
NORTHEAST 28 85N 3W
OFFICE FILE NO. _____
BS3328e_020601



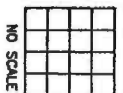
NO SCALE



PREVIOUSLY RECORDED IN BOOK N/A, PAGE N/A.
MONUMENT DESCRIPTION AND HOW ESTABLISHED SET 5/8"X24"
REBAR WITH YELLOW CAP LS 14807 0.3" BELOW ROAD SURFACE, PER COUNTY
ROW PLAT OF PROJ. NO. 1618 AND AUGUSTA FOLKERS, DATED 1962 AT STATION
65+88, 22' EAST OF CENTERLINE, NE COR. SEC. 28, T85N, R3W, 5TH P.M.,
JONES COUNTY, IOWA. SET REFERENCE POINTS AND TIED OUT AS INDICATED.

CORNERS TO BE INDEXED

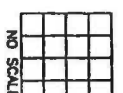
CORNER SECTION TOWNSHIP RANGE
OFFICE FILE NO. _____



NO SCALE

CORNERS TO BE INDEXED

CORNER SECTION TOWNSHIP RANGE
OFFICE FILE NO. _____

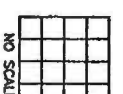


NO SCALE

PREVIOUSLY RECORDED IN BOOK _____, PAGE _____
MONUMENT DESCRIPTION AND HOW ESTABLISHED _____

CORNERS TO BE INDEXED

CORNER SECTION TOWNSHIP RANGE
OFFICE FILE NO. _____



NO SCALE

PREVIOUSLY RECORDED IN BOOK _____, PAGE _____
MONUMENT DESCRIPTION AND HOW ESTABLISHED _____

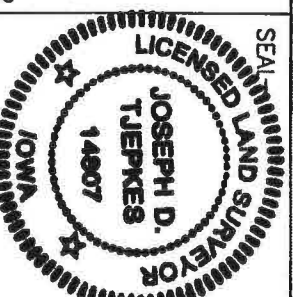
PREVIOUSLY RECORDED IN BOOK _____, PAGE _____
MONUMENT DESCRIPTION AND HOW ESTABLISHED _____

I hereby declare that this plat, survey or report
was made by me or under my direct personal
supervision and that I am a duly registered Land
Surveyor under the laws of the State of Iowa.

Signed: _____

2.8.01

Joseph D. Tjepkes L.S. Iowa Reg. No. 14807
My Registration Renewal Date is December 31, 2002



J.D. TJEPKES LS 14807
JONES COUNTY
ENGINEER'S OFFICE

19501 HWY. 64,
ANAMOSA, IOWA,
52205 (319)462-3785