

Instrument #: 2015-3129
 10/30/2015 10:21:15 AM Total Pages: 1
 ZSC SECTION CORNER CERTIFICATE
 Recording Fee: \$7.00 Transfer Tax: \$0
 Sheri L. Jones, Recorder, Jones County Iowa



Prepared by/Return to: FEHR GRAHAM, 1919 210th Street, Manchester IA 52057 - Ph: (563)927-2060

UNITED STATES PUBLIC LAND SURVEY CORNER CERTIFICATE

OF

Land Survey Monuments situated in Section 28, Township 85 North, Range 3 West of the Fifth Principal Meridian, Jones County, Iowa.

Previously recorded in (1) Bk. 2001, Pg. 1602 in County Recorder's Office.
 (book, page, document number, etc.)

(Show reason for preparing this certificate, the evidence and detailed procedures used in establishing the corner positions and monumentation found or placed.)

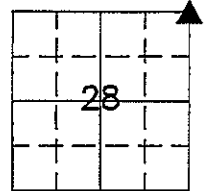
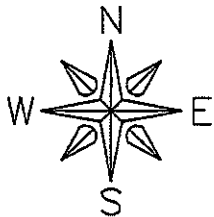
Monument Description and Remarks: (1) NE Corner of Section 28-T85N-R3W:

Section corner information was obtained before concrete overlay project. Found 1/2" rebar in centerline of 150th Street (gravel road). Set one new tie.

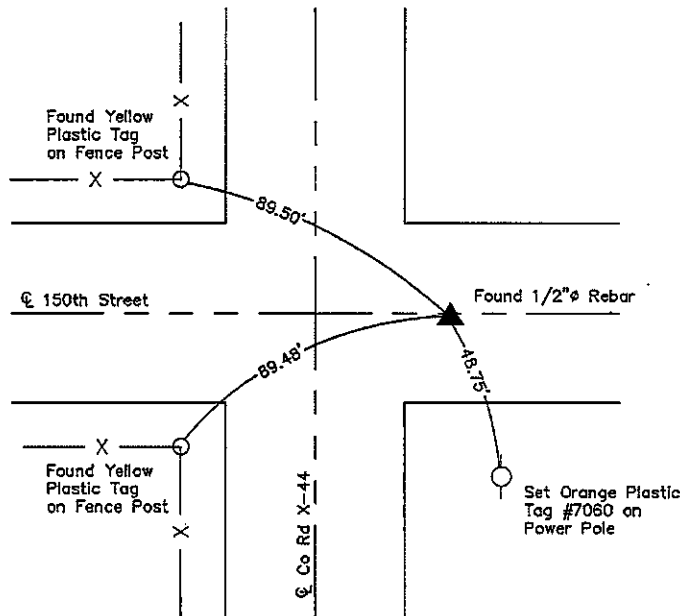
PLAN VIEW

Project Number 15-321

Show a minimum of three reference ties to durable physical objects, relevant monuments and physical conditions that will enable recovery of the corner.



Wayne Twp.



(1) NE Corner of Sec. 28-T85N-R3W
 Found 1/2" Rebar with Orange Plastic Cap in Gravel

PROF. ENGINEER & LAND SURVEYOR

LYLE G. TeKIPPE

7060

★ IOWA ★

I hereby certify that this land surveying document was prepared and the related survey work was performed by me or under my direct personal supervision and that I am a duly licensed Land Surveyor under the laws of the State of Iowa.

Lyle G. TeKippe 10-28-15
 Lyle G. TeKippe, P.E. & P.L.S. Date
 License Number: 7060
 My license renewal date is December 31, 2016.
 Sheets covered by this seal: This Sheet Only

List Corners to be Indexed			
Corners	Section	Twp.	Range
NE.	28	85N	3W

G:\C3D\15\15-321\15-321-LEGAL.dwg

2001 1602

FILED
RECORDERS OFFICE
JONES COUNTY IOWA

01 MAY 15 AM 10:18

MARIE KRUTZFIELD
RECORDER No Fee

J.D. TJEPKES, LS. JONES COUNTY ENGINEER'S OFFICE, 19501 HWY. 64, ANAMOSA, IOWA, 52205 (319)462-3785

UNITED STATES PUBLIC LAND SURVEY CORNER CERTIFICATE

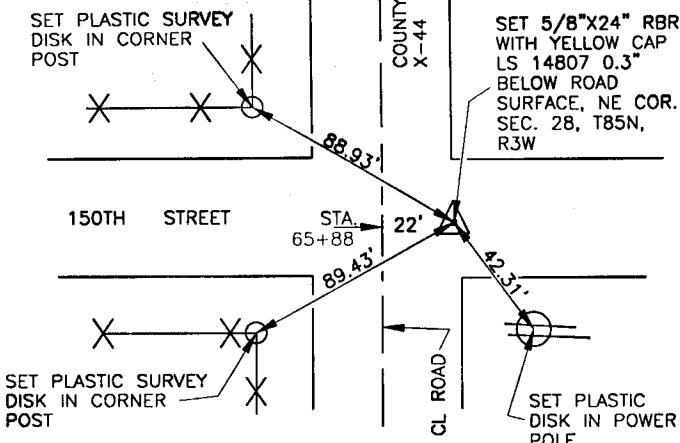
LAND SURVEY MONUMENTS SITUATED IN SECTION 28, TOWNSHIP 85
NORTH, RANGE 3 WEST OF THE 5TH P.M., JONES COUNTY, IOWA

CORNERS TO BE INDEXED

CORNER SECTION TOWNSHIP RANGE
NORTHEAST 28 85N 3W

OFFICE FILE NO.

85328e_020601

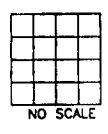


PREVIOUSLY RECORDED IN BOOK N/A, PAGE N/A
MONUMENT DESCRIPTION AND HOW ESTABLISHED SET 5/8\"/>

CORNERS TO BE INDEXED

CORNER SECTION TOWNSHIP RANGE

OFFICE FILE NO.

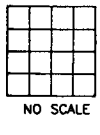


PREVIOUSLY RECORDED IN BOOK _____, PAGE _____
MONUMENT DESCRIPTION AND HOW ESTABLISHED _____

CORNERS TO BE INDEXED

CORNER SECTION TOWNSHIP RANGE

OFFICE FILE NO.

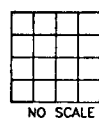


PREVIOUSLY RECORDED IN BOOK _____, PAGE _____
MONUMENT DESCRIPTION AND HOW ESTABLISHED _____

CORNERS TO BE INDEXED

CORNER SECTION TOWNSHIP RANGE

OFFICE FILE NO.



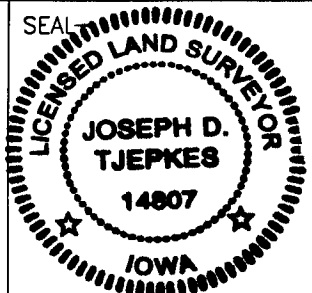
PREVIOUSLY RECORDED IN BOOK _____, PAGE _____
MONUMENT DESCRIPTION AND HOW ESTABLISHED _____

I hereby declare that this plat, survey or report was made by me or under my direct personal supervision and that I am a duly registered Land Surveyor under the laws of the State of Iowa.

Signed: \

2.8.01

Joseph D. Tjepkes L.S. Iowa Reg. No. 14807
My Registration Renewal Date is December 31, 2002



J.D. TJEPKES LS 14807
JONES COUNTY
ENGINEER'S OFFICE

19501 HWY. 64,
ANAMOSA, IOWA,
52205 (319)462-3785