

# SECTION CORNER CERTIFICATE

OF  
 LAND SURVEY MONUMENTS SITUATED IN SECTION 29, TOWNSHIP 85 NORTH,  
 RANGE 3 WEST, OF THE FIFTH PRINCIPAL MERIDIAN, JONES, COUNTY, IOWA.

PREVIOUSLY RECORDED IN BOOK \_\_\_\_\_ AT PAGE \_\_\_\_\_ .

FOR RECORDER'S USE

**REASON FOR PREPARING CERTIFICATE:**

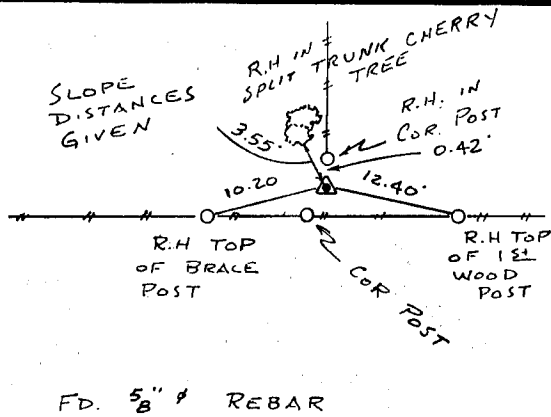
- A) THERE IS NO CERTIFICATE FOR THE CORNER ON FILE WITH THE RECORDER OF THE COUNTY IN WHICH THE CORNER IS LOCATED.
- B) CORNER POSITION DIFFERS FROM THAT SHOWN IN THE PUBLIC RECORDS OF THE COUNTY IN WHICH THE CORNER IS LOCATED.
- C) THE CORNER MONUMENT HAS BEEN REPLACED OR MODIFIED.
- D) THE REFERENCE TIES REFERRED TO IN AN EXISTING PUBLIC RECORD ARE INCORRECT.

**MONUMENT DESCRIPTION AND REMARKS :**

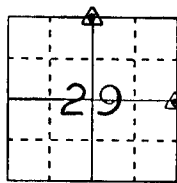
N 1/4 CORNER SECTION 29-T85N-R3W FOUND 5" # REBAR  
 BETWEEN TWO CORNER POST  
 E 1/4 CORNER SECTION 29-T85N-R3W FOUND 3/4" # GAS  
 PIPE 3.30' WEST OF E OF GRAVEL COUNTY ROAD

## RECOVERY TIE DRAWING

N 1/4 Cor. 29-85-3

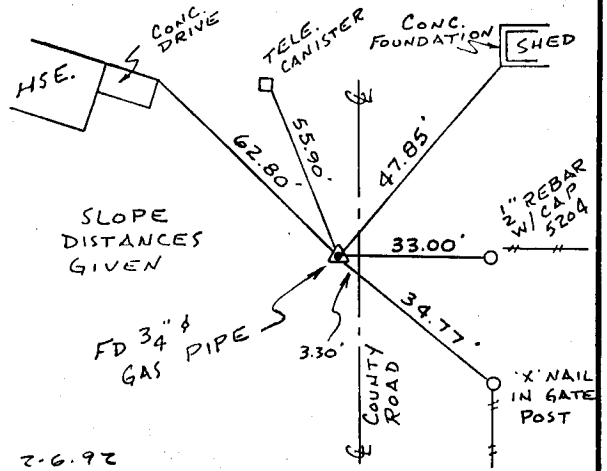


SN CARD 2-6-92 M.S.



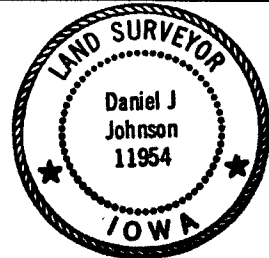
NOT TO SCALE

E 1/4 Cor. 29-85-3



2-6-92

I, DANIEL J. JOHNSON - CERTIFY THAT THE CORNER LOCATION(S) SHOWN ON THIS RECORD WERE DETERMINED BY ME OR UNDER MY DIRECTION AND CONTROL AND THAT THIS U.S. PUBLIC LAND SURVEY MONUMENT RECORD IS CORRECT AND COMPLETE TO THE BEST OF MY KNOWLEDGE AND BELIEF.



*Daniel J. Johnson*  
 DANIEL J. JOHNSON L.S. NO 8165 DATE 1-22-92

GOVERNMENT CORNER  
 5/8" TIE PIN SET  
 CENTERLINE  
 EXISTING FENCE LINE  
 R.O.W. LINE

SHEET TITLE: U.S. PUBLIC LAND SURVEY RECORD

PROJECT TITLE: JONES COUNTY PROJECT C-749

HALL AND HALL ENGINEERS, INC.  
 226 29TH STREET DRIVE S.E.  
 CEDAR RAPIDS, IOWA 52403  
 319-362-9548

D W N R.W.B

C H K D.J.J.

A P P

D A T E 1-2-92

S C A L E NONE

F N O B 0T23

P N O P R O J 4578

85329c-012292, 85329d-012292