

PREPARED BY HALL & HALL ENGINEERS, INC. 209 29TH STREET N.E. CEDAR RAPIDS, IOWA 52402 (319) 362-9548

SECTION CORNER CERTIFICATE

OF

LAND SURVEY MONUMENTS SITUATED IN SECTION 29, TOWNSHIP 85 NORTH, RANGE 3 WEST, OF THE FIFTH PRINCIPAL MERIDIAN, JONES COUNTY, IOWA.

PREVIOUSLY RECORDED IN BOOK _____ AT PAGE _____

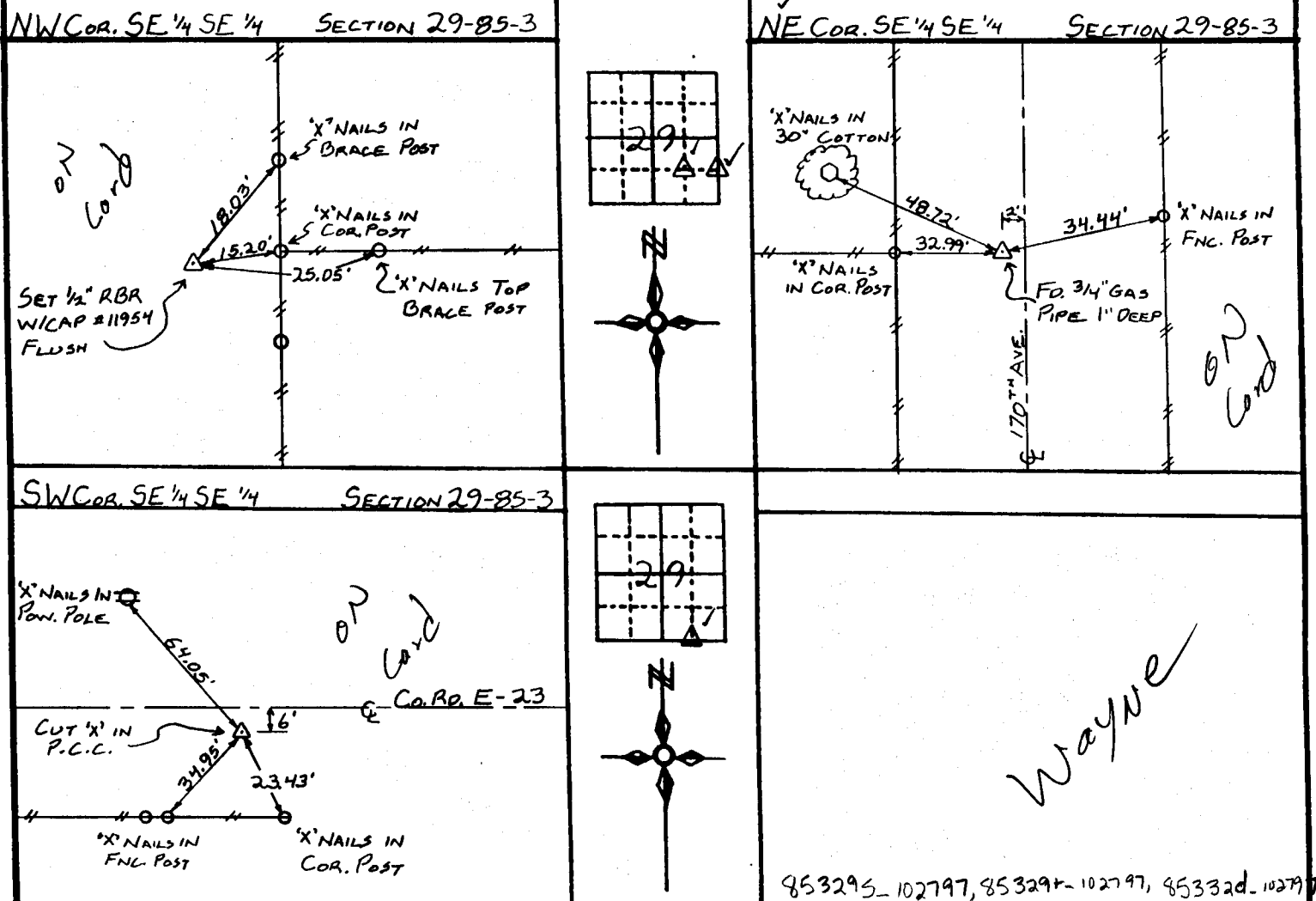
MONUMENT DESCRIPTION AND REMARKS:

NW COR. SE 1/4 SE 1/4 SEC. 29-85-3: SET 1/2" REBAR WITH CAP #11954 FLUSH WITH GROUND

NE COR. SE 1/4 SE 1/4 SEC. 29-85-3: FOUND 3/4" GAS PIPE 1" BELOW SURFACE, 2' ± WEST OF E 170TH AVE.

SW COR. SE 1/4 SE 1/4 SEC. 29-85-3: CUT 'X' IN PAVEMENT 6' SOUTH OF E Co. Rd. E-23

RECOVERY TIE DRAWING



853295-102797, 853296-102797, 85332d-102797

I hereby certify that this land surveying document was prepared and the related survey work was performed by me or under my direct personal supervision and that I am a duly licensed Land Surveyor under the laws of the State of Iowa.

Signed: Daniel J. Johnson Date: 10-27-97
 Daniel J. Johnson, L.S. 11954
 My license renewal date is December 31, 1998

Pages or sheets covered by this seal:
 (Entire submission unless specified here)

REASON FOR PREPARING CERTIFICATE:

- A) THERE IS NO CERTIFICATE FOR THE CORNER ON FILE WITH THE RECORDER OF THE COUNTY IN WHICH THE CORNER IS LOCATED.
- B) CORNER POSITION DIFFERS FROM THAT SHOWN IN THE PUBLIC RECORDS OF THE COUNTY IN WHICH THE CORNER IS LOCATED.
- C) THE CORNER MONUMENT HAS BEEN REPLACED OR MODIFIED.
- D) THE REFERENCE TIES REFERRED TO IN AN EXISTING PUBLIC RECORD ARE INCORRECT.



△ GOVERNMENT CORNER
 ● PROPERTY CORNER FOUND
 ○ 1/2" x 30" W/ LS CAP SET
 - - - EXISTING FENCE LINE
 ——— PROPERTY LINE

SHEET NO. 1 OF 1 US PUBLIC LAND SURVEY RECORD

PROJECT TITLE: ROGER & SHARON HALL - P.O.S.

HALL AND HALL ENGINEERS, INC.
 209 29TH STREET N.E.
 CEDAR RAPIDS, IOWA 52402
 (319) 362-9548

DATE: 9/18/95 SCALE: NONE DRAWN BY: JWP CHECKED BY: DJJ PLOT NO.: 5666

SECTION CORNER CERTIFICATE

OF
 LAND SURVEY MONUMENTS SITUATED IN SECTION 29, TOWNSHIP 85 NORTH,
 RANGE 3 WEST, OF THE FIFTH PRINCIPAL MERIDIAN, JONES, COUNTY, IOWA.

PREVIOUSLY RECORDED IN BOOK _____ AT PAGE _____.

FOR RECORDER'S USE

REASON FOR PREPARING CERTIFICATE:

- A) THERE IS NO CERTIFICATE FOR THE CORNER ON FILE WITH THE RECORDER OF THE COUNTY IN WHICH THE CORNER IS LOCATED.
- B) CORNER POSITION DIFFERS FROM THAT SHOWN IN THE PUBLIC RECORDS OF THE COUNTY IN WHICH THE CORNER IS LOCATED.
- C) THE CORNER MONUMENT HAS BEEN REPLACED OR MODIFIED.
- D) THE REFERENCE TIES REFERRED TO IN AN EXISTING PUBLIC RECORD ARE INCORRECT.

MONUMENT DESCRIPTION AND REMARKS :

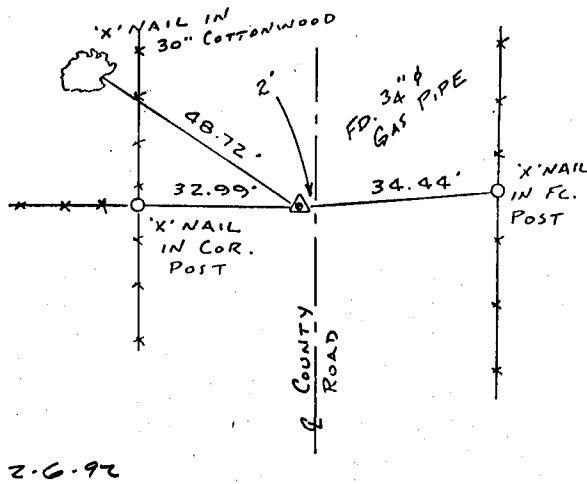
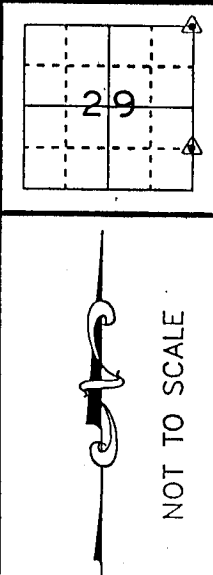
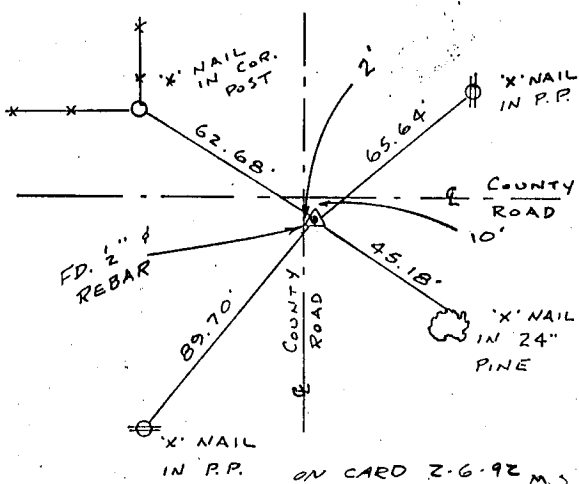
N.E. CORNER SECTION 29, T85N, R3W FD. 1/2" Ø REBAR 10" DEEP
 2' ± EAST OF E OF N-S COUNTY ROAD ± 10' ± OF E OF E-W
 COUNTY ROAD

S.E. CORNER NE 1/4 - SE 1/4 SECTION 29, T85N, R3W FD. 3/4" Ø GAS PIPE
 1" DEEP 2' ± WEST OF E OF N-S COUNTY ROAD

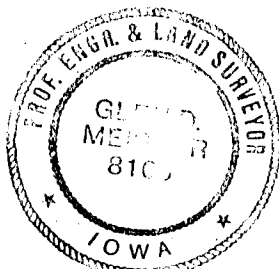
RECOVERY TIE DRAWING

N.E. 1/4 29-85-3

S.E. COR. N.E. 1/4 - S.E. 1/4 29-85-3



I, GLEN D. MEISNER, CERTIFY THAT THE CORNER LOCATION(S) SHOWN ON THIS RECORD WERE DETERMINED BY ME OR UNDER MY DIRECTION AND CONTROL AND THAT THIS U.S. PUBLIC LAND SURVEY MONUMENT RECORD IS CORRECT AND COMPLETE TO THE BEST OF MY KNOWLEDGE AND BELIEF.



Glen D. Meisner 1-30-92
 GLEN D. MEISNER L.S. NO 8165 DATE

D W N R.W.B.	CH K G.D.M.	A P P	D A T E 12-19-91	S C A L E N O N E	F N O B 0T23	N O J 4613	
△ GOVERNMENT CORNER ○ 5/8" TIE PIN SET --- CENTERLINE - - - EXISTING FENCE LINE - - - R.O.W. LINE		SHEET T I T L E U.S. PUBLIC LAND SURVEY RECORD P R O J E C T T I T L E MIKE BOWMAN SURVEY			H A L L A N D H A L L E N G I N E R S , I N C. 226 29TH STREET DRIVE S.E. CEDAR RAPIDS, IOWA 52403 319-362-9548		

85329e-012092, 85329+012092