

2001 1688

FILED
RECORDERS OFFICE
JONES COUNTY IOWA

01 MAY 21 AM 10:06

MARIE KRUTZFIELD
RECORDER No Fee

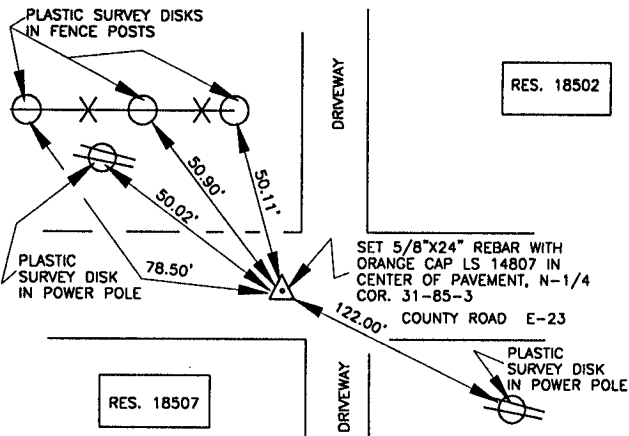
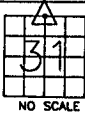
J.D. TJEPKES, LS. JONES COUNTY ENGINEER'S OFFICE, 19501 HWY. 64, ANAMOSA, IOWA, 52205 (319)462-3785

UNITED STATES PUBLIC LAND SURVEY CORNER CERTIFICATE

LAND SURVEY MONUMENTS SITUATED IN SECTION 31, TOWNSHIP 85
NORTH, RANGE 3 WEST OF THE 5TH P.M., JONES COUNTY, IOWA

483 CORNERS TO BE INDEXED

CORNER SECTION TOWNSHIP RANGE
N-QUARTER 31 85N 3W
OFFICE FILE NO.
85331c_051501



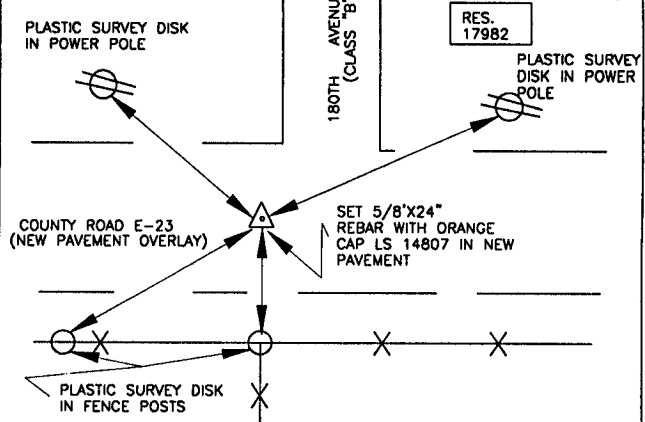
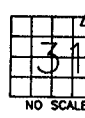
RES. 18502

RES. 18507

PREVIOUSLY RECORDED IN BOOK N/A, PAGE N/A.
MONUMENT DESCRIPTION AND HOW ESTABLISHED FOUND CUT GROSS
IN PAVEMENT PER ENGINEER'S RECORD. DRILLED HOLE AND SET 5/8"X24" REBAR
WITH ORANGE CAP LS 14807 AFTER NEW CONCRETE OVERLAY. SET REFERENCE
POINTS AND TIED OUT AS INDICATED. NORTH 1/4 COR. SECTION 31-85-3.
JONES COUNTY, IOWA

484 CORNERS TO BE INDEXED

CORNER SECTION TOWNSHIP RANGE
NORTHEAST 31 85N 3W
OFFICE FILE NO.
85331e_051501

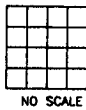


RES. 17982

PREVIOUSLY RECORDED IN BOOK N/A, PAGE N/A.
MONUMENT DESCRIPTION AND HOW ESTABLISHED FOUND #4 REBAR
IN OLD PAVEMENT PER ENGINEER'S TIES. DRILLED HOLE IN NEW PAVEMENT
OVERLAY, SET 5/8"X24" REBAR WITH ORANGE CAP LS 14807. SET REFERENCE
POINTS AND TIED OUT AS INDICATED. NORTHEAST CORNER SECTION 31
TOWNSHIP 85 NORTH, RANGE 3 WEST, 5TH PRINCIPAL MERIDIAN.
JONES COUNTY, IOWA.

CORNERS TO BE INDEXED

CORNER SECTION TOWNSHIP RANGE
OFFICE FILE NO.



CORNERS TO BE INDEXED

CORNER SECTION TOWNSHIP RANGE
OFFICE FILE NO.



PREVIOUSLY RECORDED IN BOOK _____, PAGE _____
MONUMENT DESCRIPTION AND HOW ESTABLISHED _____

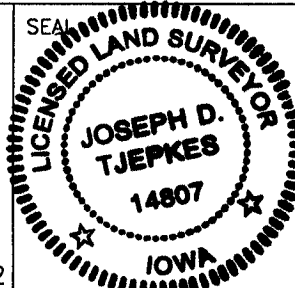
PREVIOUSLY RECORDED IN BOOK _____, PAGE _____
MONUMENT DESCRIPTION AND HOW ESTABLISHED _____

I hereby declare that this plat, survey or report was made by me or under my direct personal supervision and that I am a duly registered Land Surveyor under the laws of the State of Iowa.

Signed:

Joseph D. Tjepkes 5-15-01

Joseph D. Tjepkes L.S. Iowa Reg. No. 14807
My Registration Renewal Date is December 31, 2002



J.D. TJEPKES LS 14807
JONES COUNTY
ENGINEER'S OFFICE

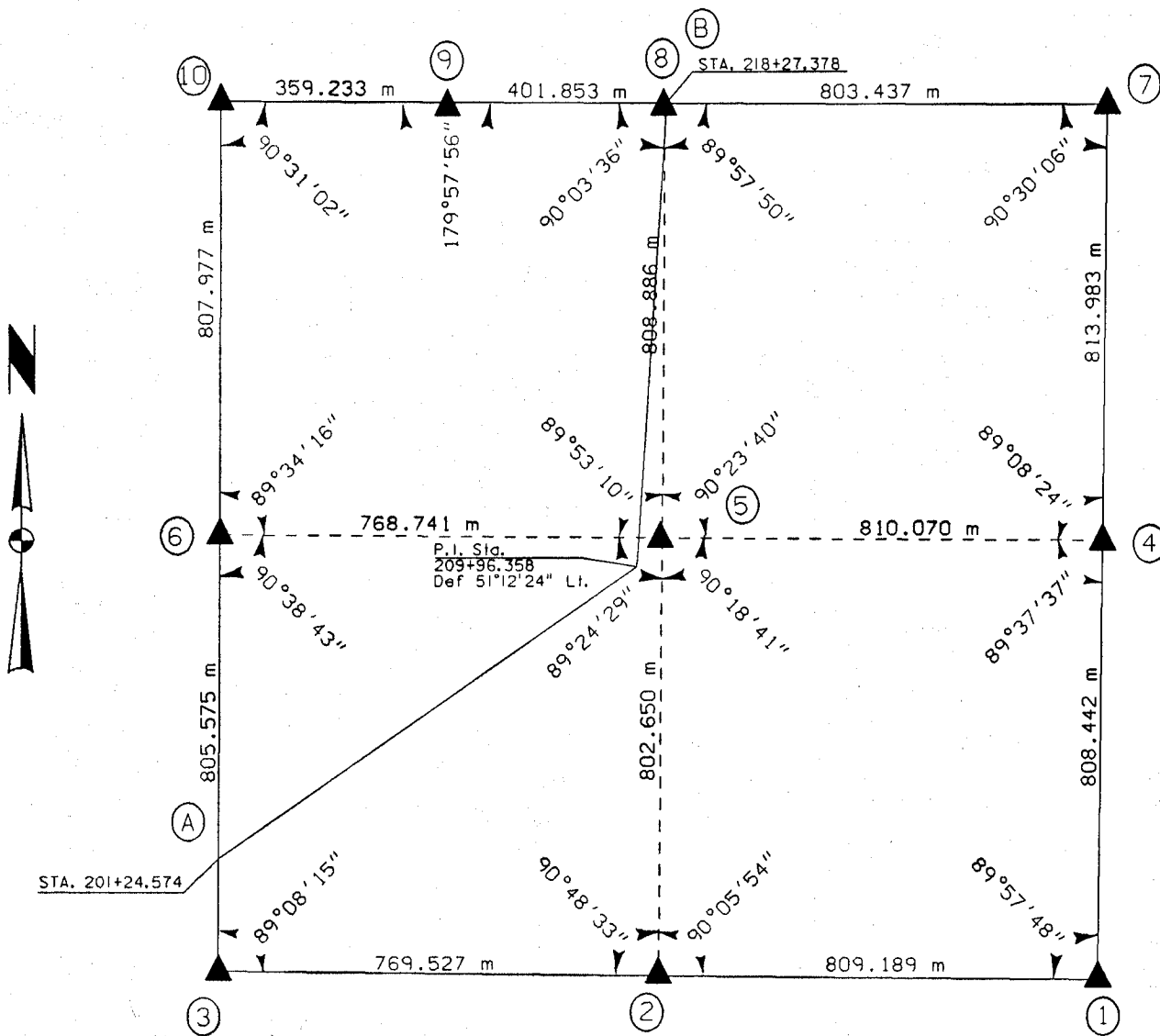
19501 HWY. 64,
ANAMOSA, IOWA,
52205 (319)462-3785

UNITED STATES PUBLIC SECTION CORNER CERTIFICATION
AND LAND CORNER SURVEY
SECTION 30 T-85N R-3W

MADE FOR
IOWA DEPARTMENT OF TRANSPORTATION FOR THE PURPOSE OF
RIGHT OF WAY DESCRIPTIONS ON PRIMARY ROAD No. U.S. 151

MADE BY
MICHAEL R. FAGLE R.L.S. No. 8505
JONES COUNTY, IOWA NHS-151-3(84)--19-57
APRIL 1998 THRU OCTOBER 1998

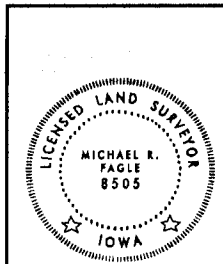
ALL DISTANCES WERE CAREFULLY MEASURED AND MAY NOT AGREE WITH ROAD SURVEY STATIONING



85425e-012199
85425o-012199
85330b-012199
85330e-012199
85330c-012199
EARTH
85330m-012199
85330o-012199
85330u-012199
85330w-012199
85330y-012199



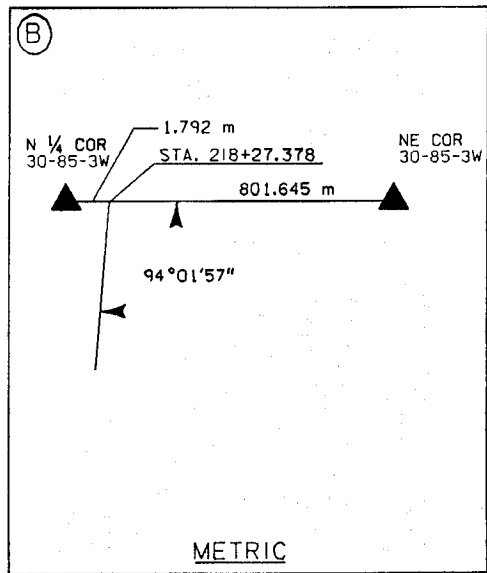
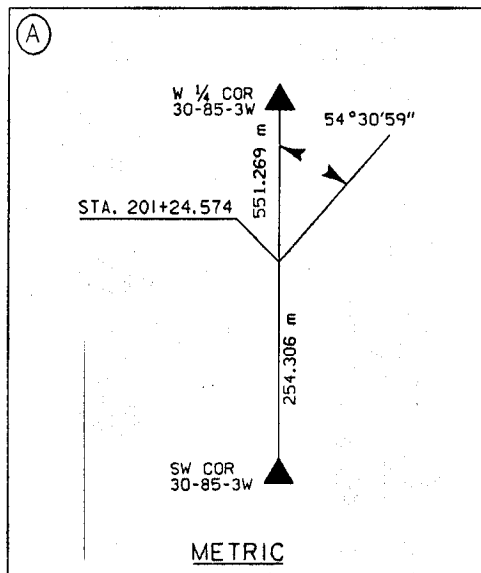
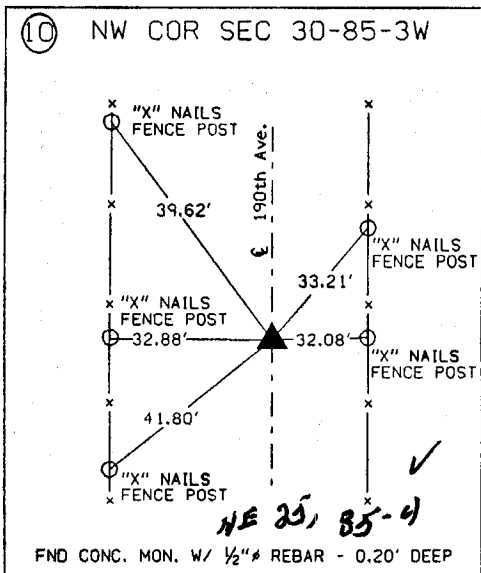
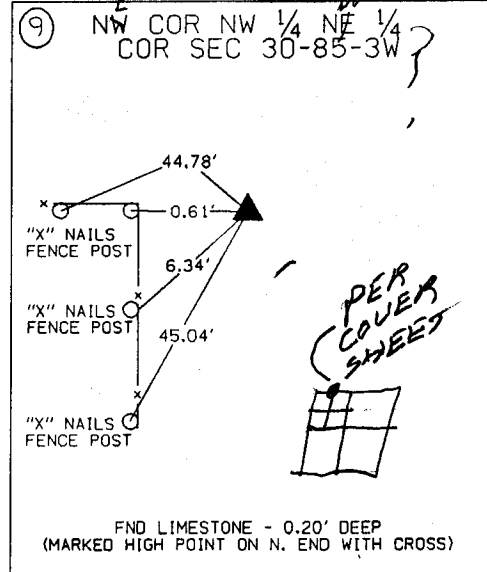
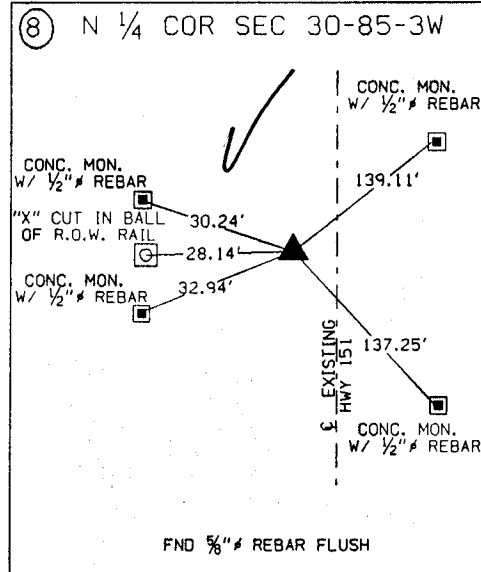
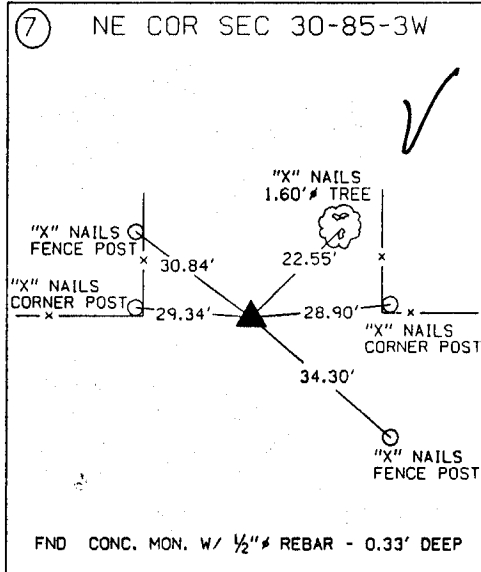
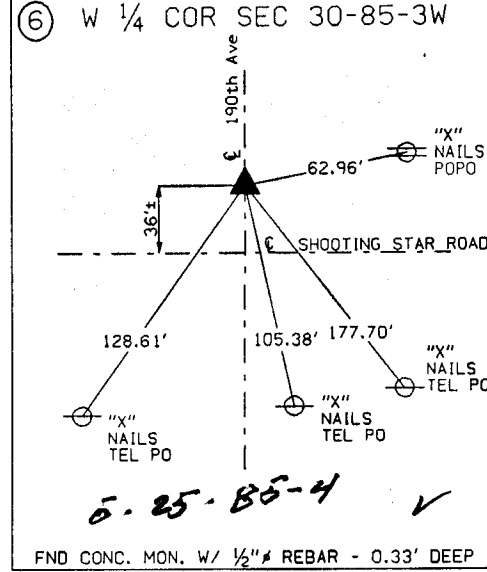
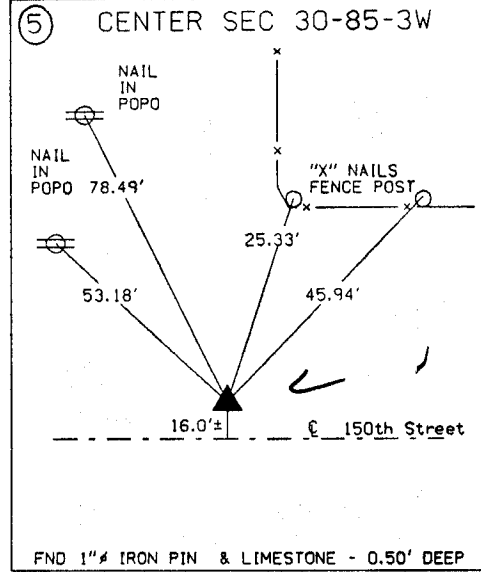
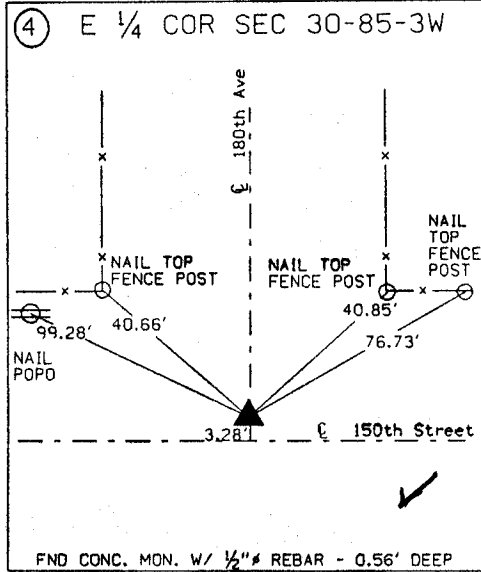
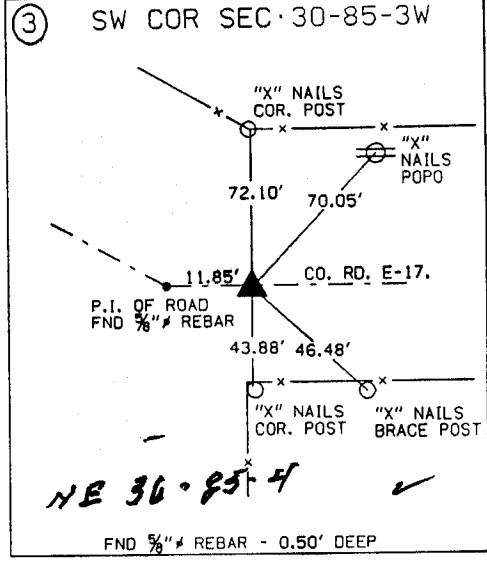
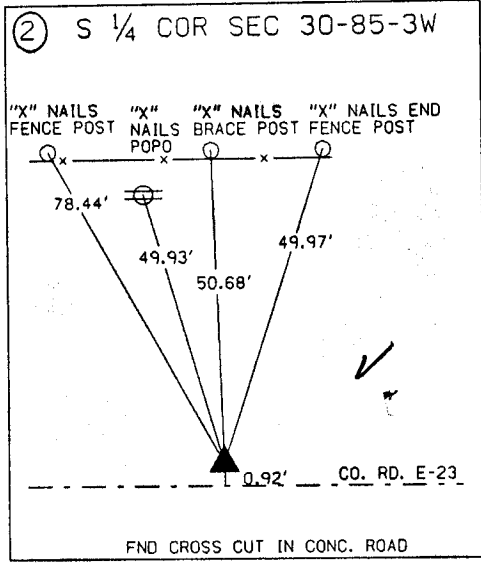
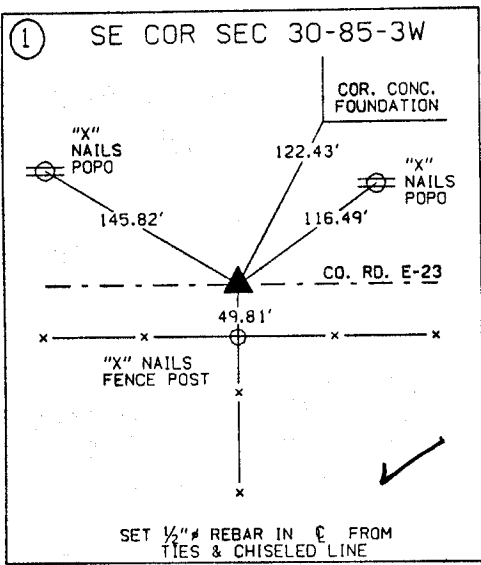
T E C H



I hereby certify that this Land Surveying document was prepared by me or under my direct personal supervision and that I am a duly Licensed Land Surveyor under the laws of the State of Iowa.
Michael R. Fagle 1-21-99
MICHAEL R. FAGLE Date
License number 8505
My license renewal date is December 31, 2000
Pages or sheets covered by this seal:
Two (2)

METRIC

**UNITED STATES PUBLIC SECTION CORNER CERTIFICATION
AND LAND CORNER SURVEY
SECTION 30 T-85N R-3W**



ALL TIES ARE ENGLISH UNLESS OTHERWISE NOTED