

2001 1689

FILED
RECORDERS OFFICE
JONES COUNTY IOWA

01 MAY 21 AM 10:07

MARIE KRUTZFIELD
RECORDER No Fee

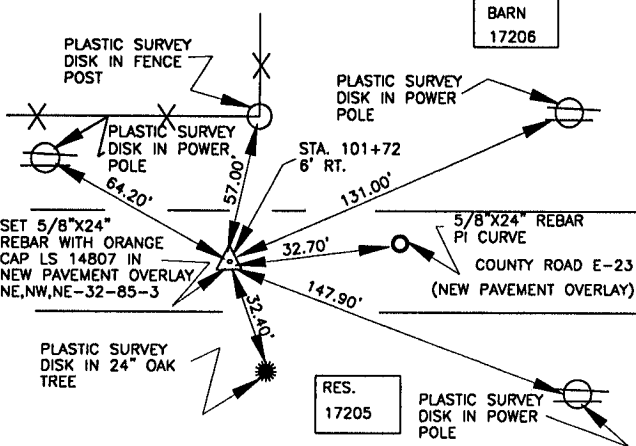
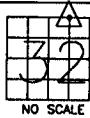
J.D. TJEPKES, LS. JONES COUNTY ENGINEER'S OFFICE, 19501 HWY. 64, ANAMOSA, IOWA, 52205 (319)462-3785

UNITED STATES PUBLIC LAND SURVEY CORNER CERTIFICATE

LAND SURVEY MONUMENTS SITUATED IN SECTION 32, TOWNSHIP 85
NORTH, RANGE 3 WEST OF THE 5TH P.M., JONES COUNTY, IOWA

474 CORNERS TO BE INDEXED

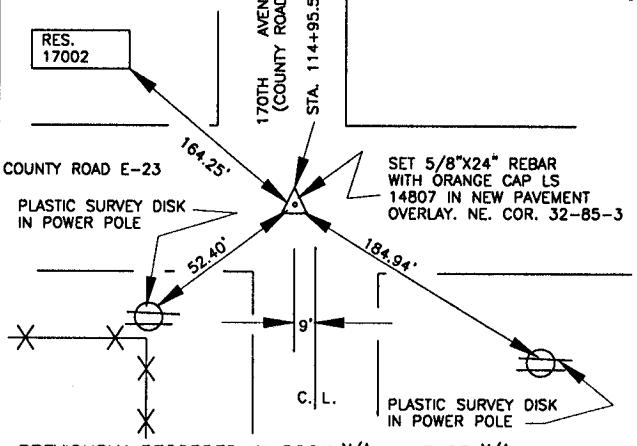
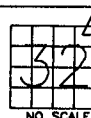
CORNER SECTION TOWNSHIP RANGE
NE,NW,NE 32 85N 3W
OFFICE FILE NO.
85332d_051501



PREVIOUSLY RECORDED IN BOOK N/A, PAGE N/A.
MONUMENT DESCRIPTION AND HOW ESTABLISHED FOUND CROSS CUT IN OLD PAVEMENT PER COUNTY ENGINEER'S TIES, DRILLED HOLE IN NEW PAVEMENT OVERLAY, SET 5/8\"/>

485 CORNERS TO BE INDEXED

CORNER SECTION TOWNSHIP RANGE
NORTHEAST 32 85N 3 WEST
OFFICE FILE NO.
85332e_051501



PREVIOUSLY RECORDED IN BOOK N/A, PAGE N/A.
MONUMENT DESCRIPTION AND HOW ESTABLISHED FOUND PK NAIL IN OLD PAVEMENT PER ENGINEER'S RECORD, DRILLED HOLE IN NEW PAVEMENT OVERLAY, SET 5/8\"/>

CORNERS TO BE INDEXED

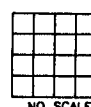
CORNER SECTION TOWNSHIP RANGE
OFFICE FILE NO.



PREVIOUSLY RECORDED IN BOOK _____, PAGE _____
MONUMENT DESCRIPTION AND HOW ESTABLISHED _____

CORNERS TO BE INDEXED

CORNER SECTION TOWNSHIP RANGE
OFFICE FILE NO.



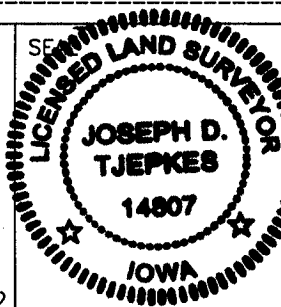
PREVIOUSLY RECORDED IN BOOK _____, PAGE _____
MONUMENT DESCRIPTION AND HOW ESTABLISHED _____

I hereby declare that this plat, survey or report was made by me or under my direct personal supervision and that I am a duly registered Land Surveyor under the laws of the State of Iowa.

Signed:

Joseph D. Tjepkes 5-15-01

Joseph D. Tjepkes L.S. Iowa Reg. No. 14807
My Registration Renewal Date is December 31, 2002



J.D. TJEPKES LS 14807
JONES COUNTY
ENGINEER'S OFFICE

19501 HWY. 64,
ANAMOSA, IOWA,
52205 (319)462-3785

Wayne

PREPARED BY HALL & HALL ENGINEERS, INC. 209 29TH STREET N.E. CEDAR RAPIDS, IOWA 52402 (319) 362-9548
SECTION CORNER CERTIFICATE

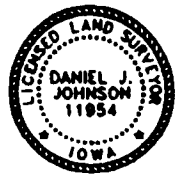
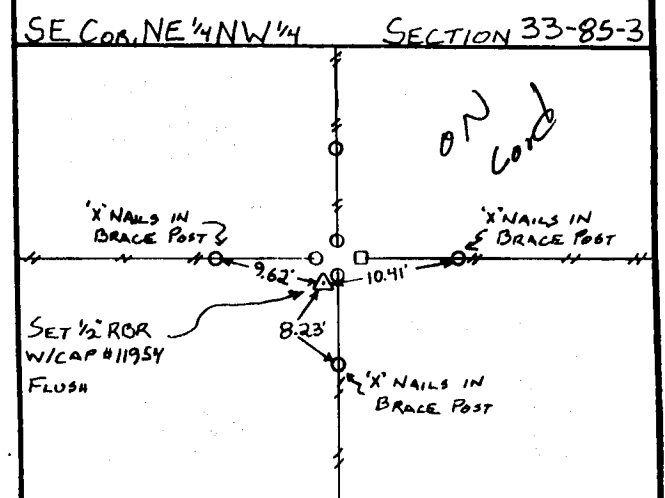
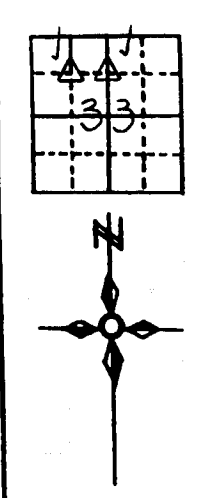
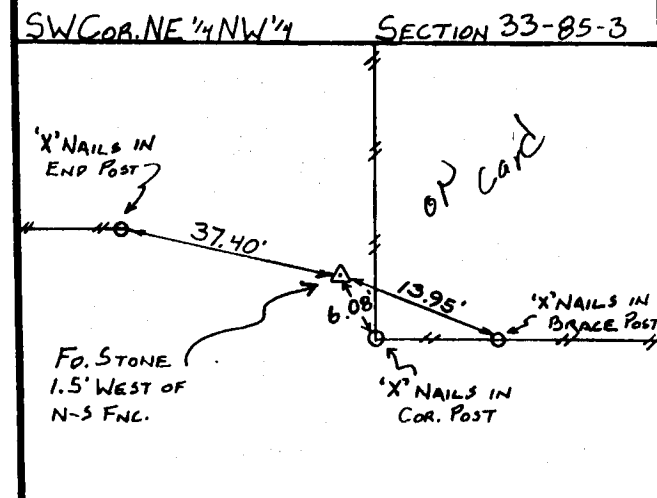
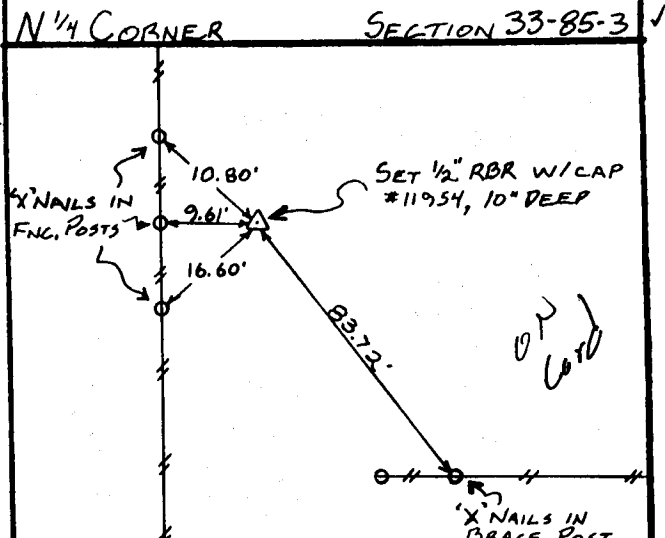
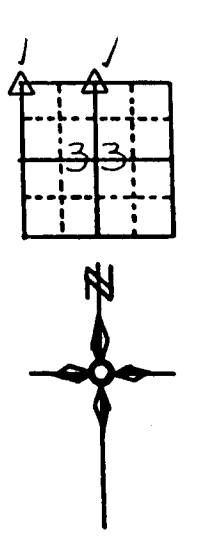
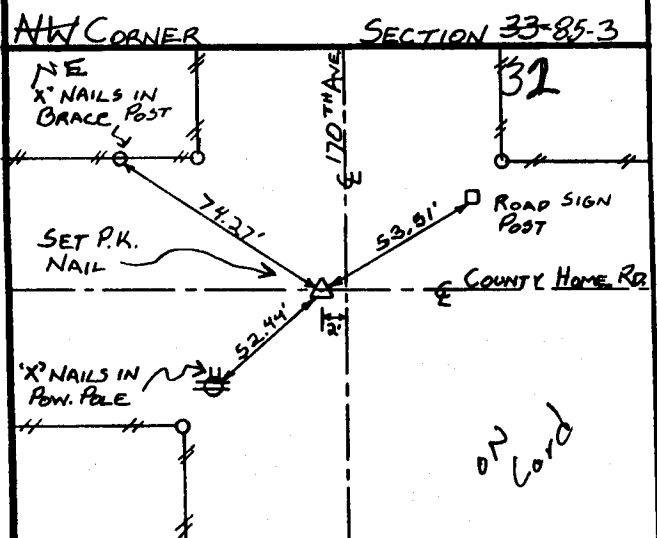
OF
LAND SURVEY MONUMENTS SITUATED IN SECTION 33, TOWNSHIP 85 NORTH,
RANGE 3 WEST, OF THE FIFTH PRINCIPAL MERIDIAN, JONES COUNTY, IOWA.

PREVIOUSLY RECORDED IN BOOK _____ AT PAGE _____

MONUMENT DESCRIPTION AND REMARKS:

- 32
- ✓ NW COR. SEC. 33-85-3: SET P.K. NAIL & COUNTY HOME RO. 2' WEST OF E 170TH AVE.
- ✓ N¹/₄ COR. SEC. 33-85-3: SET 1/2" REBAR WITH CAP #11954, 10" BELOW SURFACE.
- ✓ SW COR. NE¹/₄ NW¹/₄ SEC. 33-85-3: FOUND 11" x 8" x 5" STONE, 1.5' WEST OF NORTH-SOUTH FENCE
- SE COR. NE¹/₄ NW¹/₄ SEC. 33-85-3: SET 1/2" REBAR WITH CAP #11954 FLUSH WITH GROUND

RECOVERY TIE DRAWING



I hereby certify that this land surveying document was prepared and the related survey work was performed by me or under my direct personal supervision and that I am a duly licensed Land Surveyor under the laws of the State of Iowa.
Signed: *Daniel J. Johnson* Date: 10-27-97
Daniel J. Johnson, L.S. 11954
My license renewal date is December 31, 1998
Pages or sheets covered by this seal:
(Entire submission unless specified here)

- REASON FOR PREPARING CERTIFICATE:**
- A) THERE IS NO CERTIFICATE FOR THE CORNER ON FILE WITH THE RECORDER OF THE COUNTY IN WHICH THE CORNER IS LOCATED
 - B) CORNER POSITION DIFFERS FROM THAT SHOWN IN THE PUBLIC RECORDS OF THE COUNTY IN WHICH THE CORNER IS LOCATED
 - C) THE CORNER MONUMENT HAS BEEN REPLACED OR MODIFIED
 - D) THE REFERENCE TIES REFERRED TO IN AN EXISTING PUBLIC RECORD ARE INCORRECT

RECORDED	△ GOVERNMENT CORNER	SHEET 119 PUBLIC LAND SURVEY RECORD	HALL AND HALL ENGINEERS, INC.
	○ PROPERTY CORNER FOUND		
NO DATE	○ 1/2" 130' W/ LS CAP SET	PROJECT: PAUL GLEN - P.O.S.	209 29TH STREET N.E. CEDAR RAPIDS, IOWA 52402 (319) 362-9548
DATE	— EXISTING FENCE LINE	SCALE: NONE	PROJ: 5270
DATE	— PROPERTY LINE		
BY: JWP			
BY: JSR			
BY: APPR			
DATE: 5/19/94			