

Instrument #: 2015-3039  
 10/23/2015 09:53:57 AM Total Pages: 1  
 ZSC SECTION CORNER CERTIFICATE  
 Recording Fee: \$7.00 Transfer Tax: \$0  
 Sheri L. Jones, Recorder, Jones County Iowa



Prepared by: Dean E. Beranek, L.S., 821 North Columbus, West Liberty, Iowa 52776 / Phone: 319-627-6521

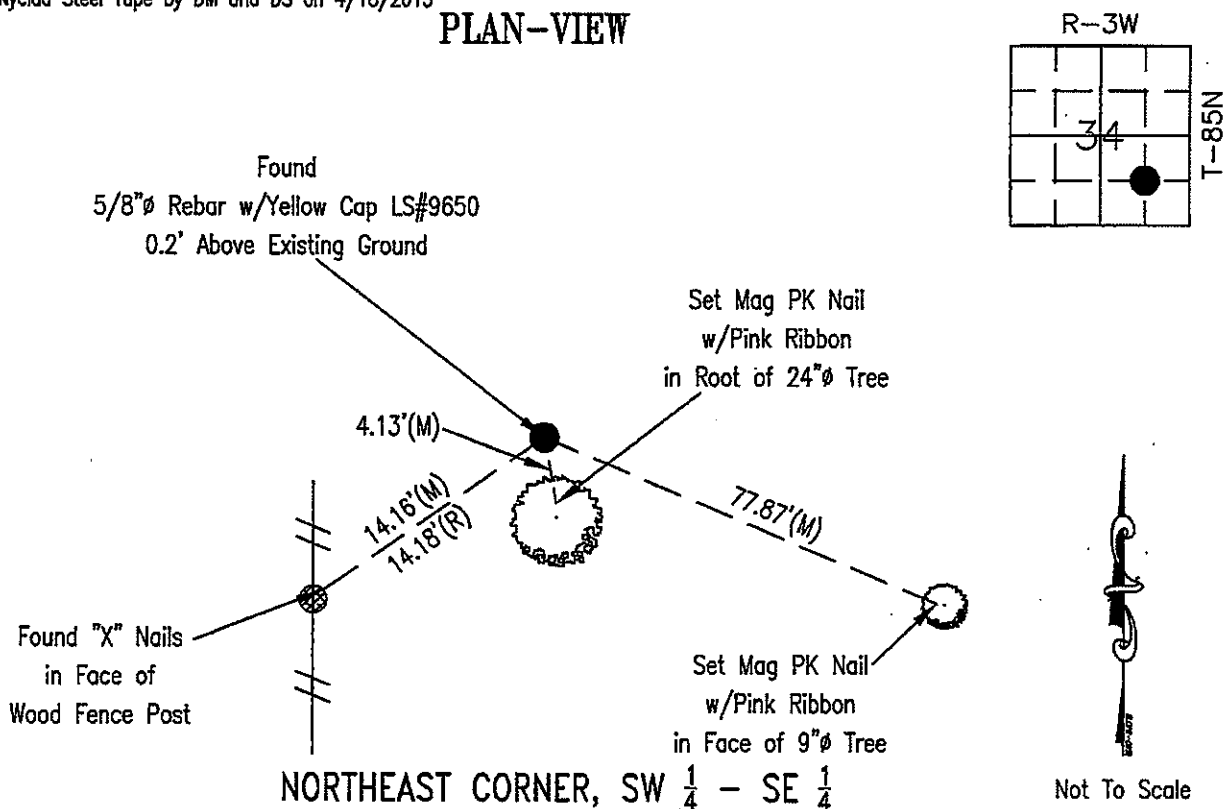
## UNITED STATES PUBLIC LAND SURVEY CORNER CERTIFICATE OF

Land Survey Monuments situated in Section 34, Township T-85N, Range R-3W, of the Fifth Principal Meridian, Jones County, Iowa. Previously recorded as Document File Number 2006 0373, in the Office of the Jones County Recorder.

Monument Description and Remarks: Northeast Corner of the Southwest Quarter of the Southeast Quarter - Found 5/8"Ø Rebar with Yellow Cap LS#9650 approximately 0.2' above existing ground and measured. One previous tie found.

Measured with Nyclad Steel Tape by DM and DS on 4/18/2015

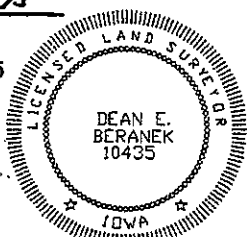
### PLAN-VIEW



I HEREBY CERTIFY THAT THIS LAND SURVEYING DOCUMENT WAS PREPARED AND THE RELATED SURVEY WORK WAS PERFORMED BY ME OR UNDER MY DIRECT PERSONAL SUPERVISION AND THAT I AM A DULY LICENSED LAND SURVEYOR UNDER THE LAWS OF THE STATE OF IOWA.

*Dean E. Beranek 10/20/15*

Dean E. Beranek (date)  
 IOWA LICENSE NUMBER 10435  
 MY LICENSE RENEWAL DATE IS DECEMBER 31, 2015  
 PAGES OR SHEETS COVERED BY THIS SEAL:  
 THIS SHEET ONLY



### List Corners to be Indexed

Corner(s)	Section	Township	Range
NE CORNER	34	T-85N	R-3W
SW - SE			

2006 0373

FILED  
RECORDERS OFFICE  
JONES COUNTY IOWA

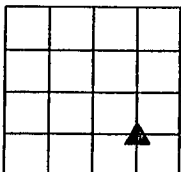
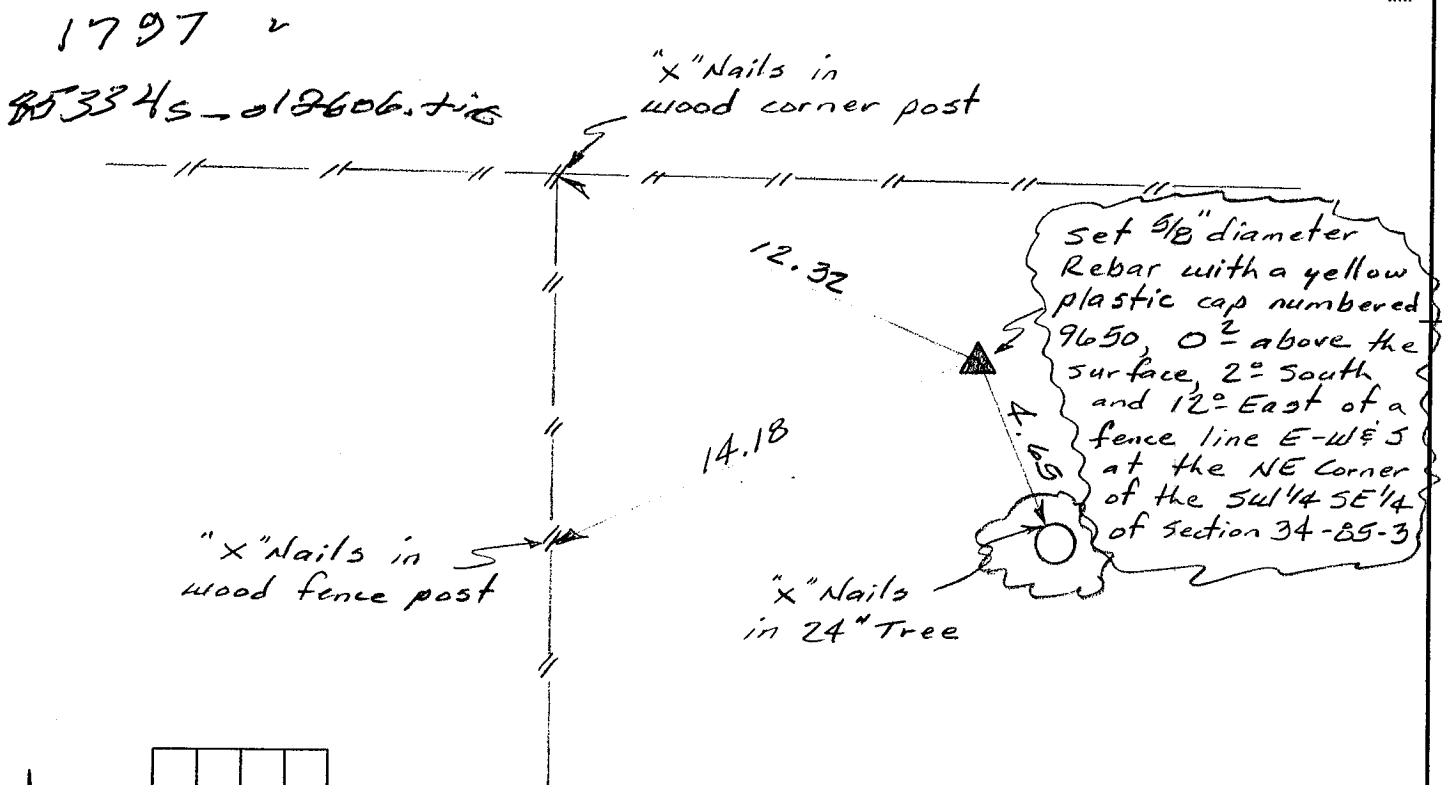
05 JAN 27 AM 11:25

MAKIE KRUTZFIELD  
RECORDER 7-00 Pd

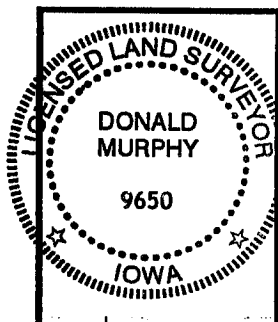
PREPARED BY: DONALD MURPHY SHIVE HATTERY INC. SUITE 500 201 THIRD AVE S.E. P.O. BOX 1803 CEDAR RAPIDS, IOWA 52406 (319)364-0227

UNITED STATES PUBLIC LAND SURVEY CORNER CERTIFICATE

Land Survey Monuments Situated in Section 34, Township 85 North, Range 3 West of the Fifth Principal Meridian, Jones County, Iowa. Narrative: This document is being prepared because there currently is no certificate on file with the county recorder for this corner. The NE corner of the SE 1/4 SE 1/4 and the SE corner of the NE 1/4 SW 1/4 of this section were found in agreement with ties on other recorded certificates. The corner position was established mid-way and on line between these two corners and monumented by a 5/8" diameter rebar with a yellow plastic cap numbered 9650. New references have been taken as shown in the plan view below.



Corners to be indexed :  
NE Corner of the  
SW 1/4 of the SE 1/4 of  
Section 34-85-3



I hereby certify that this land surveying document was prepared and the related survey work was performed by me or under my direct personal supervision and that I am a duly Licensed Land Surveyor under the Laws of the State of Iowa.

*Donald Murphy* 26 Jan. 2006  
(signature) (date)

Printed or typed name: Donald Murphy  
License number: 9650  
My license renewal date is December 31, 2006  
Pages or sheets covered by this seal: 1

C