

2006 0374

FILED
RECORDERS OFFICE
JONES COUNTY IOWA

06 JAN 27 AM 11:28

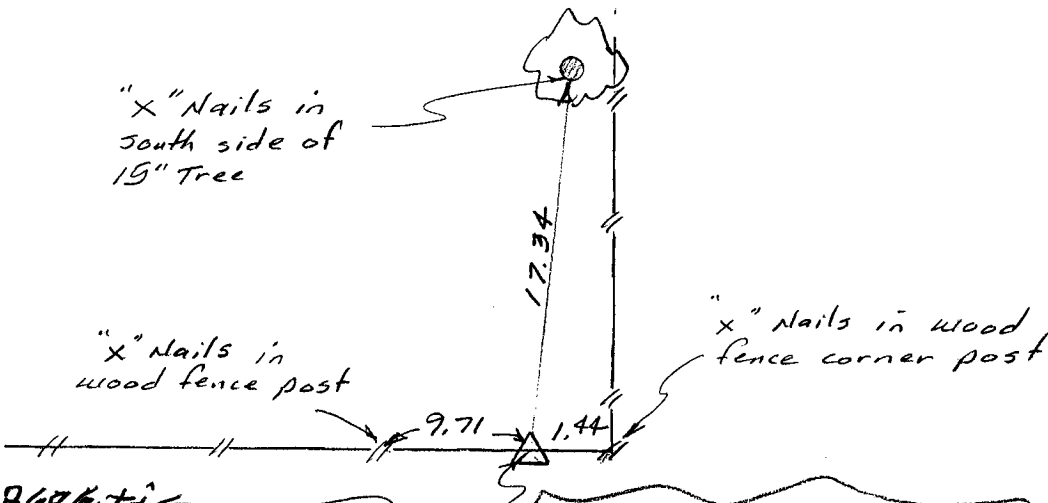
MARIE KRUTZFIELD
RECORDER 7.00 Pd

PREPARED BY: DONALD MURPHY SHIVE HATTERY INC. SUITE 500 201 THIRD AVE S.E. P.O. BOX 1803 CEDAR RAPIDS, IOWA 52406 (319)364-0227

UNITED STATES PUBLIC LAND SURVEY CORNER CERTIFICATE

Land Survey Monuments Situated in Section 34, Township B5 North, Range 3 West of the

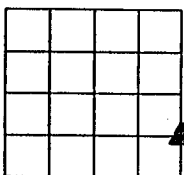
Fifth Principal Meridian, Jones County, Iowa. Narrative: *This certificate is being prepared because there currently is no certificate on file with the county recorder for this corner. No references were available for this corner from the county engineers office so the position was established by locating and verifying the SE and E¹/₄ corners of this section and placing it mid-way and on line between these two corners. A 5/8" diameter steel rebar with a yellow plastic cap numbered 9690 was placed at this position and references to "x" nails were obtained as shown in the plan view below.*



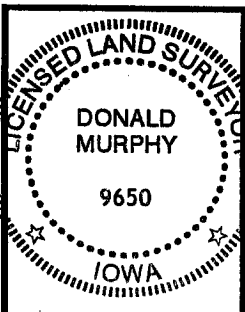
85334* - 018606 tie

1796 v

Set a 5/8" diameter steel rebar with a yellow plastic cap numbered 9690 flush with the surface in line with a fence East-west and 1.4 feet West of a fence line to the North at the NE corner of the SE¹/₄ SE¹/₄ of Section 34-B5-3



Corners to be indexed:
NE Corner of
SE¹/₄ SE¹/₄ 34-B5-3



I hereby certify that this land surveying document was prepared and the related survey work was performed by me or under my direct personal supervision and that I am a duly Licensed Land Surveyor under the Laws of the State of Iowa.

Donald Murphy 26-Jan-2006
(signature) (date)

Printed or typed name: Donald Murphy

License number: 9650

My license renewal date is December 31, 2006

Pages or sheets covered by this seal: 1