

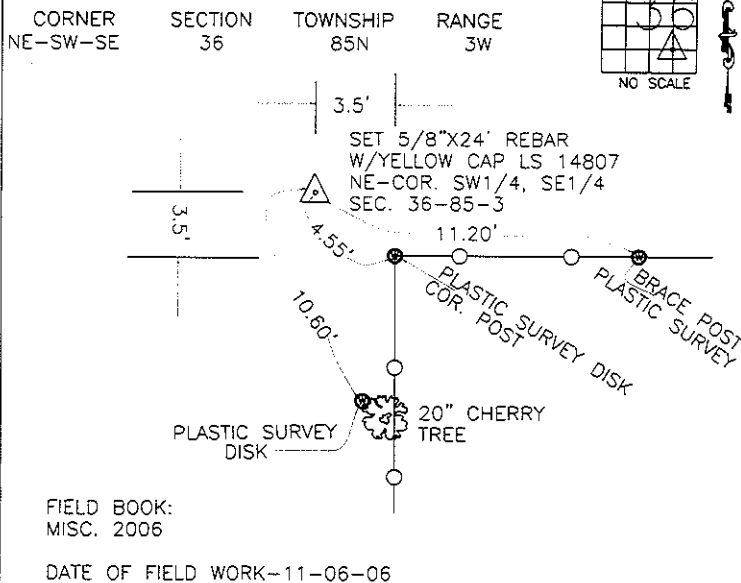
MARIE KRUTZFIELD, RECORDER
 JONES COUNTY, IOWA

J.D. TJEPKES LS, 23428 RIDGE RD. ANAMOSA, IOWA, 52205 (319)462-6067

UNITED STATES PUBLIC LAND SURVEY CORNER CERTIFICATE

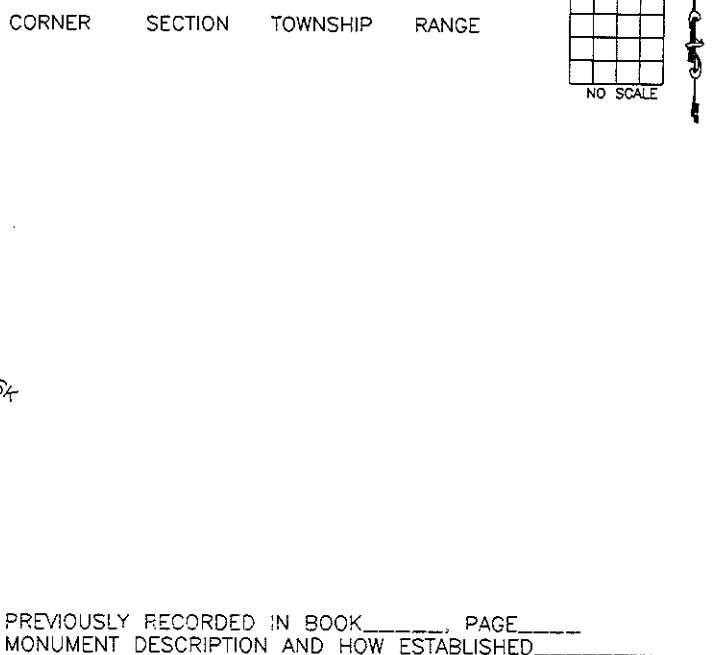
LAND SURVEY MONUMENTS SITUATED IN SECTION 36, TOWNSHIP 85
 NORTH, RANGE 3 WEST OF THE 5TH P.M., JONES COUNTY, IOWA

CORNERS TO BE INDEXED

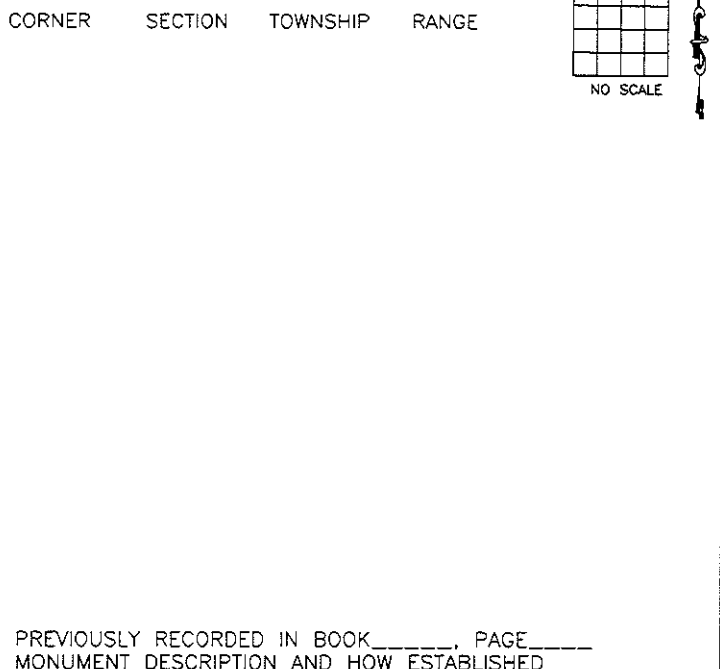


PREVIOUSLY RECORDED IN BOOK N/A, PAGE N/A
 MONUMENT DESCRIPTION AND HOW ESTABLISHED SET
 5/8"x24" REBAR W/YELLOW CAP LS 14807 PER SECTION BREAKDOWN
 NORTHEAST CORNER, SOUTHWEST QUARTER, SOUTHEAST QUARTER,
 SECTION 36, TOWNSHIP 85 NORTH, RANGE 3 WEST OF 5TH PRINCIPAL
 MERIDIAN, JONES COUNTY, IOWA. TIES AS INDICATED.

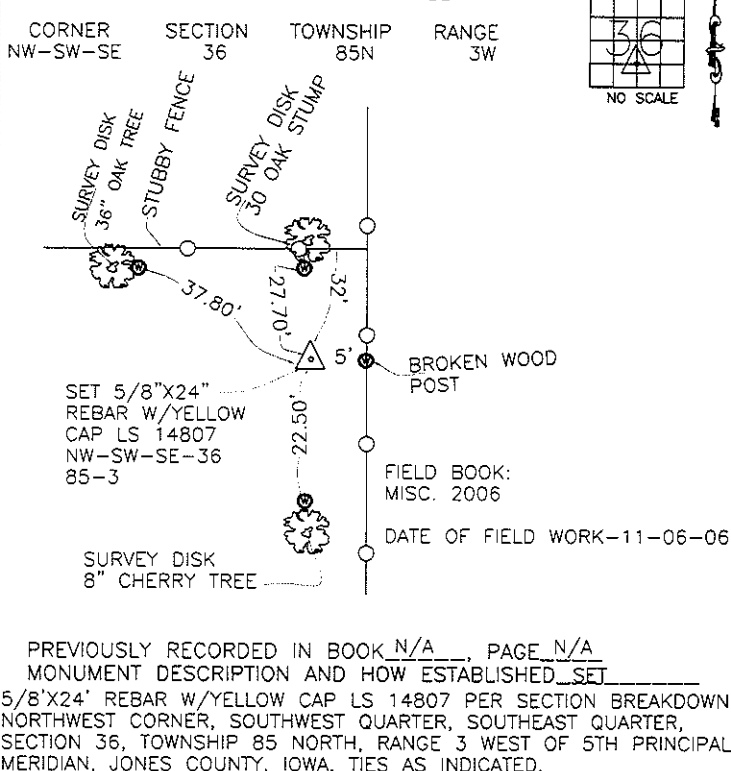
CORNERS TO BE INDEXED



CORNERS TO BE INDEXED



CORNERS TO BE INDEXED



I hereby declare that this plat, survey or report was made by me or under my direct personal supervision and that I am a duly registered Land Surveyor under the laws of the State of Iowa.

Signed: *[Signature]* 11-13-06

Joseph D. Tjepkes L.S. Iowa Reg. No. 14807
 My Registration Renewal Date is December 31, 2006

SEAL



J.D. TJEPKES LS 14807
 23428 RIDGE ROAD
 ANAMOSA, IOWA 52205

THIS IS NOT A CERTIFICATION

P

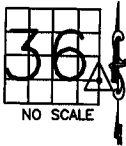
JONES COUNTY ENGINEER'S OFFICE, 19501 HWY. 64, ANAMOSA, IOWA, 52205 (319)462-3785

UNITED STATES PUBLIC LAND SURVEY CORNER CERTIFICATE

LAND SURVEY MONUMENTS SITUATED IN SECTION 36, TOWNSHIP 85 NORTH, RANGE 3 WEST OF THE 5TH P.M., JONES COUNTY, IOWA

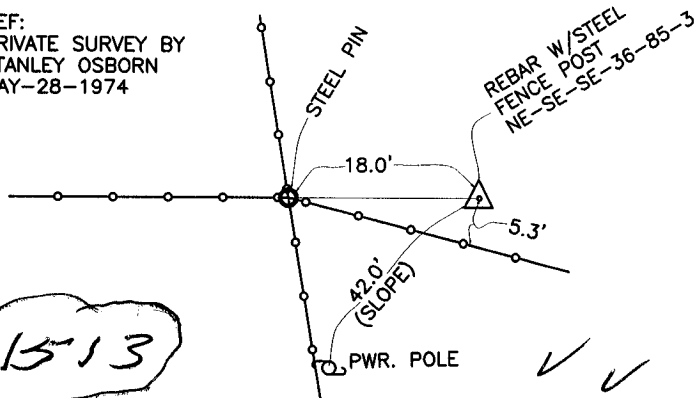
CORNERS TO BE INDEXED

CORNER SECTION TOWNSHIP RANGE
NE-SE-SE 36 85N 3W



OFFICE FILE NO.
85336t_011205.tif

REF:
PRIVATE SURVEY BY
STANLEY OSBORN
MAY-28-1974

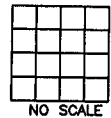


PREVIOUSLY RECORDED IN BOOK _____, PAGE _____
MONUMENT DESCRIPTION AND HOW ESTABLISHED REFERENCE

POINTS AND MONUMENTS INDICATED PER PRIVATE SURVEY BY STANLEY OSBORN-MAY-28-1974. NORTHEAST CORNER OF THE SOUTHEAST QUARTER OF THE SOUTHEAST QUARTER OF SECTION 36, TOWNSHIP 85 NORTH, RANGE 3 WEST OF THE 5TH PRINCIPAL MERIDIAN, JONES COUNTY, IOWA.

CORNERS TO BE INDEXED

CORNER SECTION TOWNSHIP RANGE

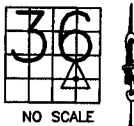


OFFICE FILE NO.

PREVIOUSLY RECORDED IN BOOK _____, PAGE _____
MONUMENT DESCRIPTION AND HOW ESTABLISHED _____

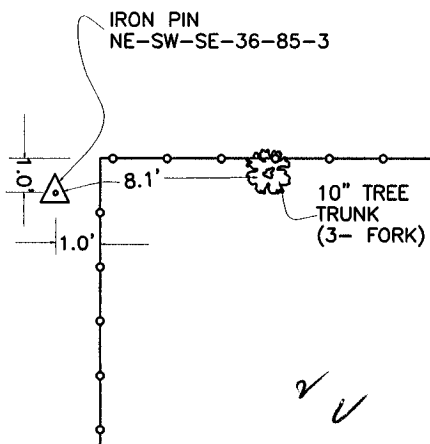
CORNERS TO BE INDEXED

CORNER SECTION TOWNSHIP RANGE
NE-SW-SE 36 85N 3W



OFFICE FILE NO.
85336s_011205.tif

REF:
PRIVATE SURVEY BY
STANLEY OSBORN
MAY-28-1974

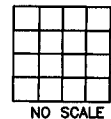


PREVIOUSLY RECORDED IN BOOK _____, PAGE _____
MONUMENT DESCRIPTION AND HOW ESTABLISHED REFERENCE

POINTS AND MONUMENTS INDICATED PER PRIVATE SURVEY BY STANLEY OSBORN-MAY-28-1974. NORTHEAST CORNER OF THE SOUTHWEST QUARTER OF THE SOUTHEAST QUARTER OF SECTION 36, TOWNSHIP 85 NORTH, RANGE 3 WEST OF THE 5TH PRINCIPAL MERIDIAN, JONES COUNTY, IOWA.

CORNERS TO BE INDEXED

CORNER SECTION TOWNSHIP RANGE



OFFICE FILE NO.

PREVIOUSLY RECORDED IN BOOK _____, PAGE _____
MONUMENT DESCRIPTION AND HOW ESTABLISHED _____

~~I hereby declare that this plat, survey or report was made by me or under my direct personal supervision and that I am a duly registered Land Surveyor under the laws of the State of Iowa.~~

Signed:

SEAL

JONES COUNTY ENGINEER'S OFFICE

19501 HWY. 64,
ANAMOSA, IOWA,
52205 (319)462-3785