

Instrument #: 2025-1630
07/10/2025 12:12:28 PM Total Pages: 1
ZSC SECTION CORNER CERTIFICATE
Recording Fee: \$7.00 Transfer Tax: \$0
Sheri L. Jones, Recorder, Jones County Iowa



PREPARED BY: RANDALL L. RATTENBORG 105 WEST MAIN STREET MANCHESTER, IA 52057, 563-927-2434

UNITED STATES PUBLIC LAND SURVEY CORNER CERTIFICATE

Land Survey Monuments situated in Section 3, Township 85 North, Range 3 West of the Fifth Principal Meridian,
JONES County, Iowa.

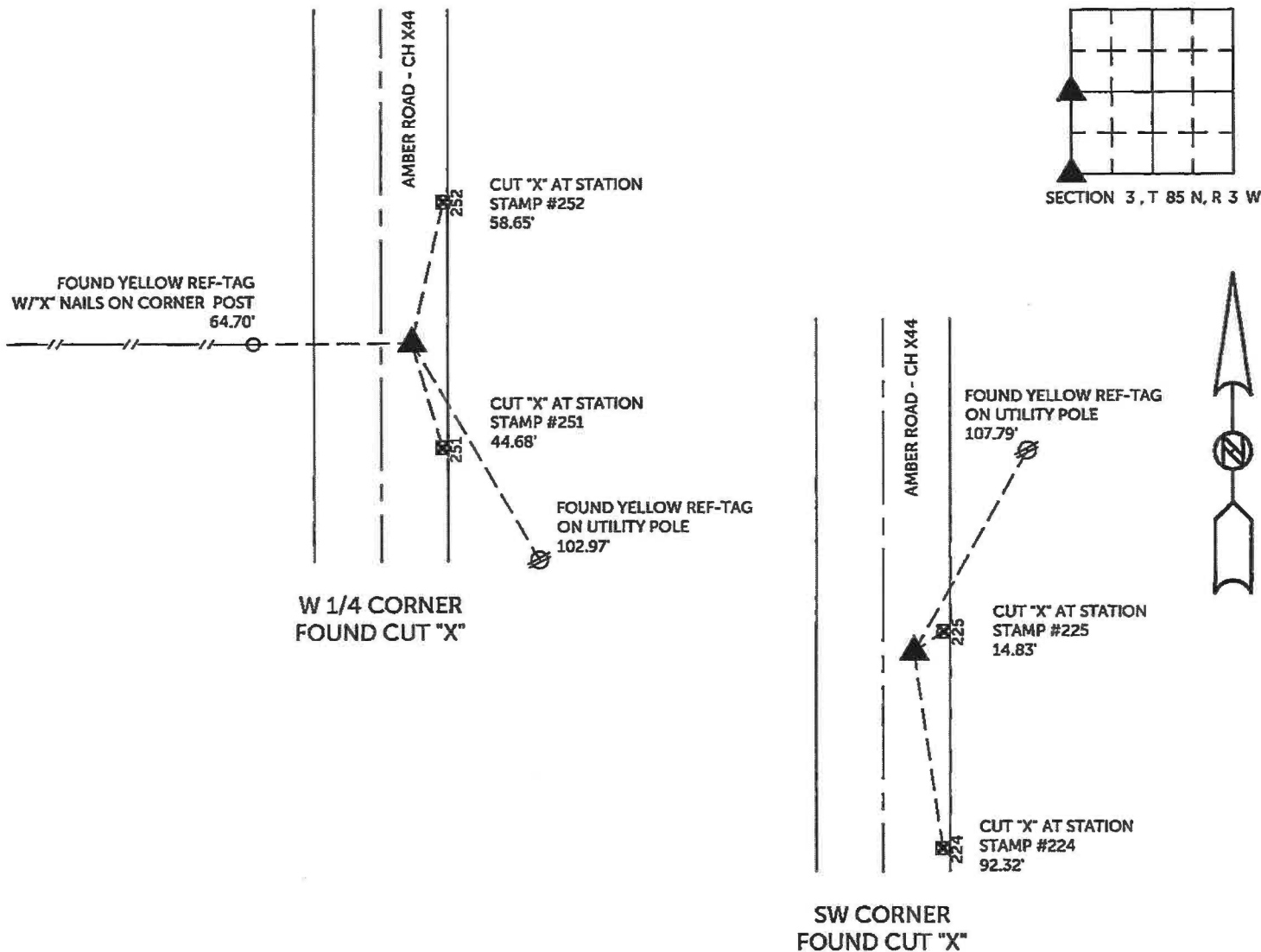
Previously recorded in County Recorder's Office in INSTRUMENT #2015-3125
(book, page, document number, etc.)

W 1/4 CORNER; Found cut "X". This Corner Certificate being issued due to missing corner tie objects.

SW CORNER; Found cut "X". This Corner Certificate being issued due to missing corner tie objects.

PLAN VIEW

(Show a minimum of three reference ties to durable physical objects, relevant monuments and physical conditions that will enable recovery of the corner.)



TIES ARE TO PLAT PARCEL 2025-39
IN SECTION 3, T 85 N, R 3 W

BURRINGTON GROUP, INC. PROJECT NO. 25-059

I HEREBY CERTIFY THAT THIS LAND SURVEYING DOCUMENT
WAS PREPARED AND THE RELATED SURVEY WORK WAS
PERFORMED BY ME OR UNDER MY DIRECT PERSONAL
SUPERVISION AND THAT I AM A DULY LICENSED PROFESSIONAL
LAND SURVEYOR UNDER THE LAWS OF THE STATE OF IOWA.

 7/8/2025
Randall L. Rattenborg, P.L.S. License #17939 Date
My license renewal date is December 31, 2025

List Corners to be Indexed: Section Township Range
W 1/4 CORNER 3 T 85N R 3 W
SW CORNER

SEAL COVERS THIS SHEET ONLY



BURRINGTON GROUP, INC.
Civil Engineering | Land Surveying
105 W. Main Street Manchester, Iowa 52057

Instrument #: 2015-3125
10/30/2015 10:21:15 AM Total Pages: 1
ZSC SECTION CORNER CERTIFICATE
Recording Fee: \$7.00 Transfer Tax: \$0
Sheri L. Jones, Recorder, Jones County Iowa



Prepared by/Return to: FEHR GRAHAM, 1919 210th Street, Manchester IA 52057 - Ph: (563)927-2060

UNITED STATES PUBLIC LAND SURVEY CORNER CERTIFICATE

OF

Land Survey Monuments situated in Section 4, Township 85 North, Range 3 West of the Fifth Principal Meridian, Jones County, Iowa.

Previously recorded in (1) I.D.O.T. Ties (2) I.D.O.T. Ties in County Recorder's Office.
(book, page, document number, etc.)

(Show reason for preparing this certificate, the evidence and detailed procedures used in establishing the corner positions and monumentation found or placed.)

Monument Description and Remarks: (1) E1/4 Corner of Section 4-T85N-R3W:

Section corner information was obtained before and set after concrete overlay project. Found 1/2"Ø rebar w/OPC #11310 before P.C.C. overlay. Set mag nail in cut "x" in P.C.C. pavement and one new tie.

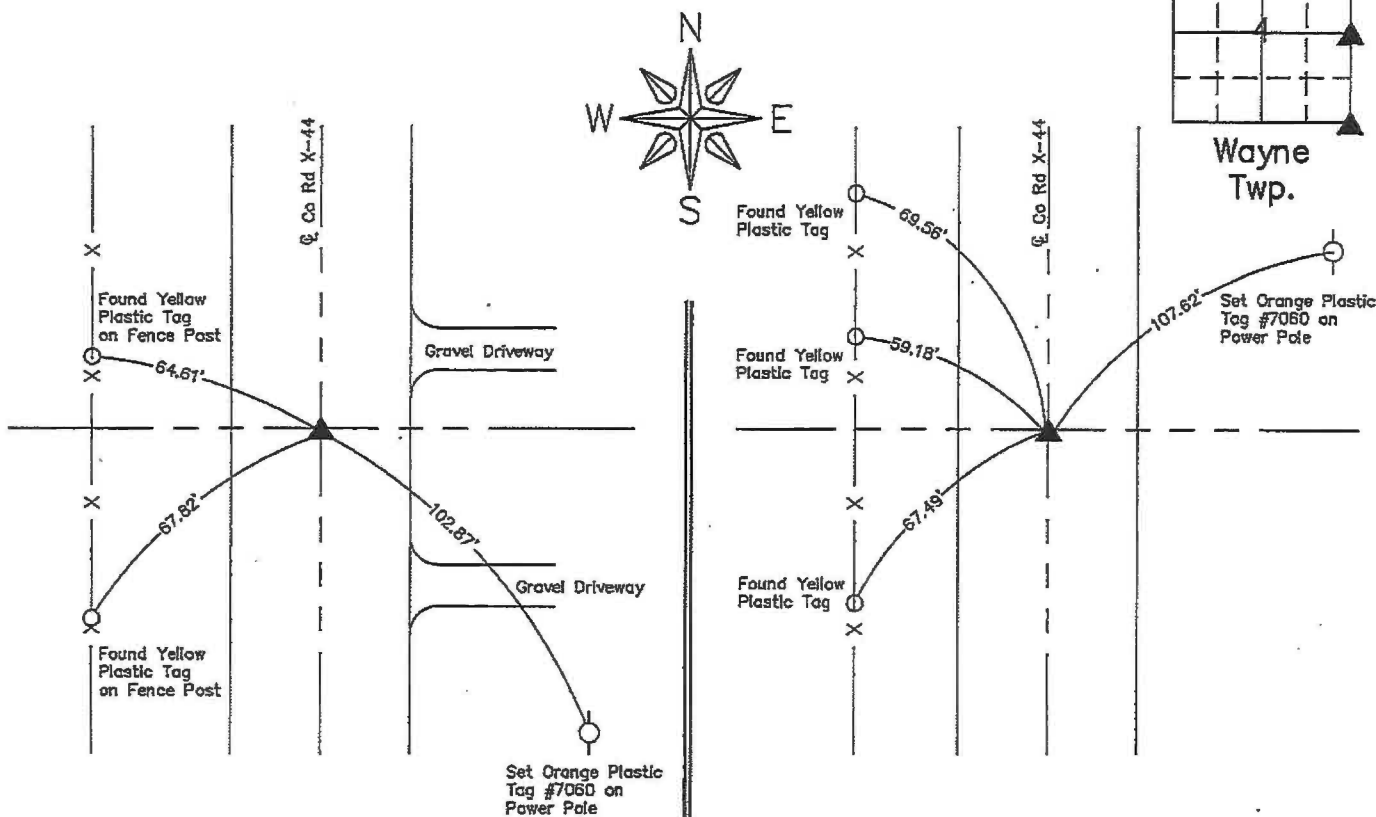
(2) SE Corner of Section 4-T85N-R3W:

Section corner information was obtained before and set after concrete overlay project. Found chiseled "x" in P.C.C. pavement before P.C.C. overlay. Set mag nail in cut "x" in P.C.C. pavement and one new tie.

PLAN VIEW

Project Number 15-321

Show a minimum of three reference ties to durable physical objects, relevant monuments and physical conditions that will enable recovery of the corner.



(1) E1/4 Corner of Sec. 4-T85N-R3W
Set Mag Nail in Cut "X" in P.C.C. Pavement

(2) SE Corner of Sec. 4-T85N-R3W
Set Mag Nail in Cut "X" in P.C.C. Pavement

I hereby certify that this land surveying document was prepared and the related survey work was performed by me or under my direct personal supervision and that I am a duly licensed Land Surveyor under the laws of the State of Iowa.

LYLE G. TEKIPPE
7060
IOWA

Lyle G. Tekippe 10-28-15
Lyle G. Tekippe, P.E. & P.L.S. Date
License Number: 7060
My license renewal date is December 31, 2016.
Sheets covered by this seal: This Sheet Only

List Corners to be Indexed			
Corners	Section	Twp.	Range
E1/4	4	85N	3W
SE	4	85N	3W

G:\C30\15\15-321\15-321-LEGAL.dwg

COPY

Jones County Iowa
Marie Krutzfield, Recorder
Fee Book 2010 3408
12/09/2010 @1156AM
ZSC SEC COR CERT
Book: Page: # Pages: 1
Total Fees: \$0.00

PREPARED BY

CLARENCE J. WALTON, JONES COUNTY ENGINEER'S OFFICE, 19501 HWY. 64, ANAMOSA, IOWA, 52205 (319) 462-3785

UNITED STATES PUBLIC LAND
SURVEY CORNER CERTIFICATE

LAND SURVEY MONUMENTS SITUATED IN SECTION 4, TOWNSHIP 85 NORTH,
RANGE 3 WEST OF THE 5TH PRINCIPAL MERIDIAN, JONES COUNTY, IOWA.

PROJECT: M-1311

STATE PLANE COORDINATE
NAD 83 IOWA NORTH
N 3544968.98
E 5547173.50

CORNER SECTION TOWNSHIP RANGE
E 1/4 CORNER 4 T85N R3W



NO SCALE

NOTES:

- 1) THE STATE PLANE COORDINATES AS SHOWN ARE FOR CONVENIENCE ONLY. THE TIES AS SHOWN SHOULD BE USED TO REPLACE THE CORNER, IF DESTROYED.
- 2) COORDINATES AS SHOWN ARE GRID COORDINATES AND BASED ON JONES COUNTY G.P.S. CONTROL NETWORK WHICH IN TURN IS BASED ON NAD 83 IOWA NORTH DATUM.
- 3) BASIS OF BEARINGS ARE BASED ON JONES COUNTY G.P.S. CONTROL NETWORK.
- 4) ALL MEASUREMENTS ARE IN FEET AND DECIMALS THEREOF. LONG DISTANCES SHOWN ARE GRID DISTANCES [EXCEPTING RECORDED () DISTANCES].

FOUND PLASTIC
SURVEY DISC IN
WOODEN FENCE POST

75.90'
64.72'
FOUND "X" NAILS IN
WOODEN CORNER POST
SET PLASTIC SURVEY DISC

FOUND "X" NAILS IN
WOODEN FENCE POST
SET PLASTIC SURVEY DISC

* SEE NOTE 4)

SET MAG NAIL AT
STATION STAMP
252+00

* SEE NOTE 4)

SET MAG NAIL AT
STATION STAMP
251+00

"SURVEY MARKER"
SIGN

PLEASE
PROTECT
NEARBY

SURVEY
MARKER

IF LOCATION OF THIS MARK
IS ENDANGERED
PLEASE CONTACT
JONES COUNTY
ENGINEER'S OFFICE
319-462-3785

SURVEY DISC

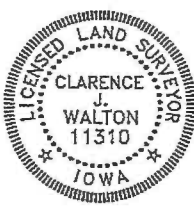


OPC ORANGE PLASTIC CAP
() RECORDED AS

PREVIOUSLY RECORDED IN RECORDER'S DOCUMENT 1999 0327

MONUMENT DESCRIPTION AND HOW ESTABLISHED FOUND "X" CUT IN CONCRETE SLAB ON CENTERLINE JOINT. REPLACED BY DRILLING HOLE IN
IN SLAB AND SETTING 5/8"X24" REBAR WITH ORANGE PLASTIC CAP #11310 COUNTER SUNK BELOW PAVEMENT SURFACE.

FIELD BOOK MISC. 2009-2010, PAGE 149. DATE OF SURVEY: 11/9/10



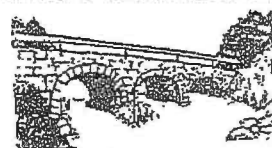
I hereby certify that this land surveying document
and the related survey work was performed by me
or under my direct personal supervision and that
I am a duly registered Land Surveyor under the laws
of the State of Iowa.
Signed: *Clarence J. Walton* 12/9/10
Clarence J. Walton, L.S.
My Registration Renewal Date is December 31, 2011
Iowa License Number 11310
Pages or sheets covered by this seal: 1 of 1.

- ☐ A. THERE IS NO CERTIFICATE FOR THE CORNER ON FILE WITH THE RECORDER OF THE COUNTY IN WHICH THE CORNER IS LOCATED.
- ☒ B. THE CORNER MONUMENT HAS BEEN REPLACED OR MODIFIED.
- ☐ C. THE SURVEYOR IN RESPONSIBLE CHARGE OF THE LAND SURVEYING ACCEPTS A CORNER POSITION THAT DIFFERS FROM THAT SHOWN IN THE PUBLIC RECORDS OF THE COUNTY IN WHICH THE CORNER IS LOCATED.
- ☐ D. THE REFERENCE TIES REFERRED TO IN AN EXISTING PUBLIC RECORD NO LONGER EXIST.

CORNERS TO BE INDEXED

CORNER	SECTION	TOWNSHIP	RANGE
E 1/4 CORNER	4	85N	3W
W 1/4 CORNER	3	85N	3W

JONES COUNTY ENGINEER'S OFFICE



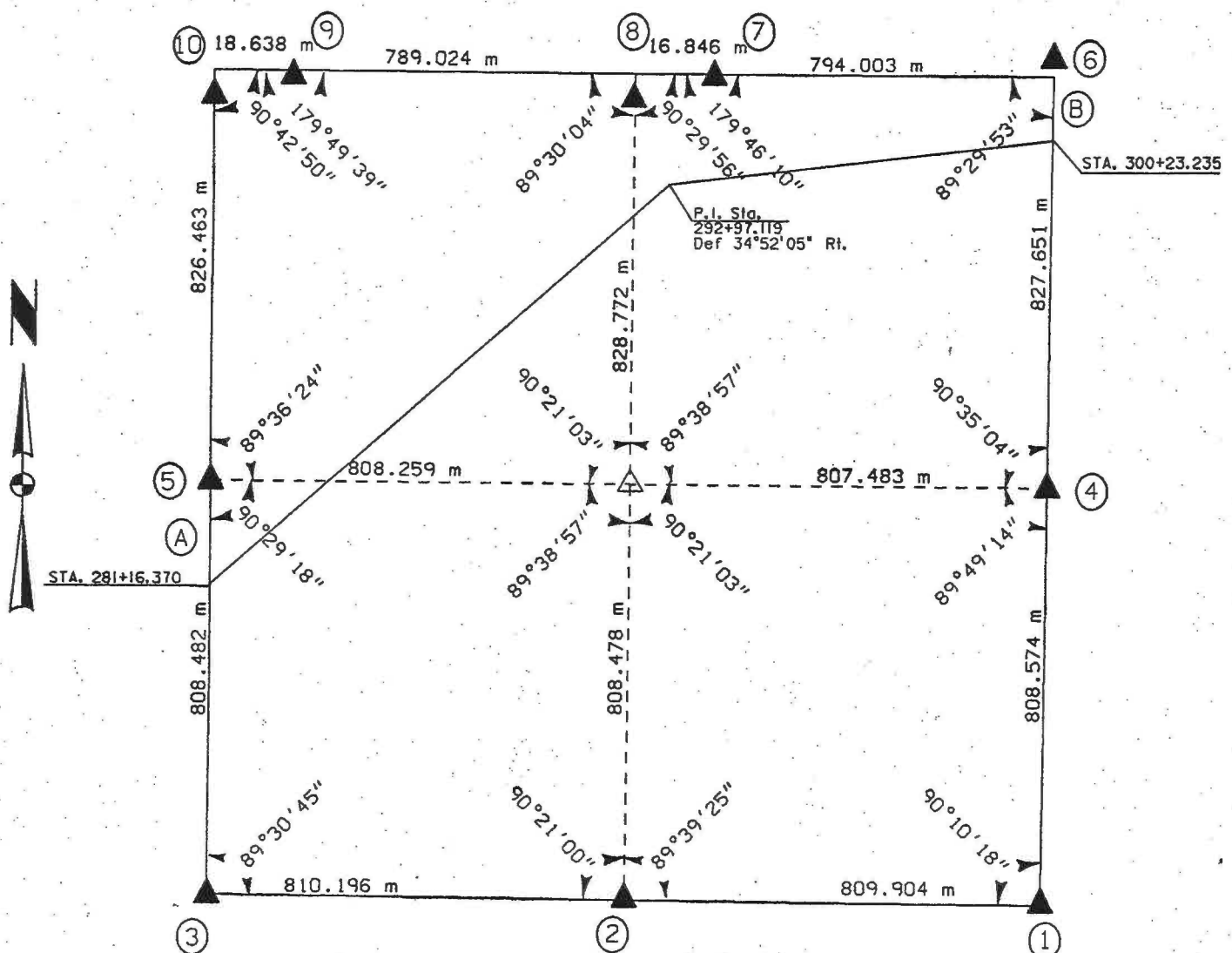
19501 HWY. 64, ANAMOSA, IOWA 52205
(319) 462-3785

UNITED STATES PUBLIC SECTION CORNER CERTIFICATION
AND LAND CORNER SURVEY
SECTION 4 T-85N R-3W

MADE FOR
IOWA DEPARTMENT OF TRANSPORTATION FOR THE PURPOSE OF
RIGHT OF WAY DESCRIPTIONS ON PRIMARY ROAD No. U.S. 151

MADE BY
MICHAEL R. FAGLE R.L.S. No. 8505
JONES COUNTY, IOWA NHS-151-3(84)--19-57
APRIL 1998 THRU OCTOBER 1998

ALL DISTANCES WERE CAREFULLY MEASURED AND MAY NOT AGREE WITH ROAD SURVEY STATIONING



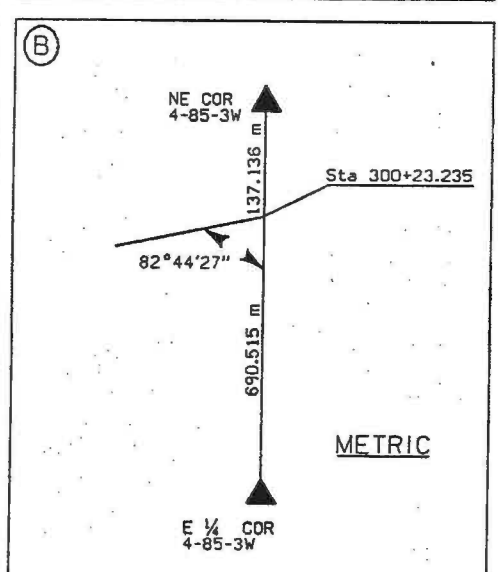
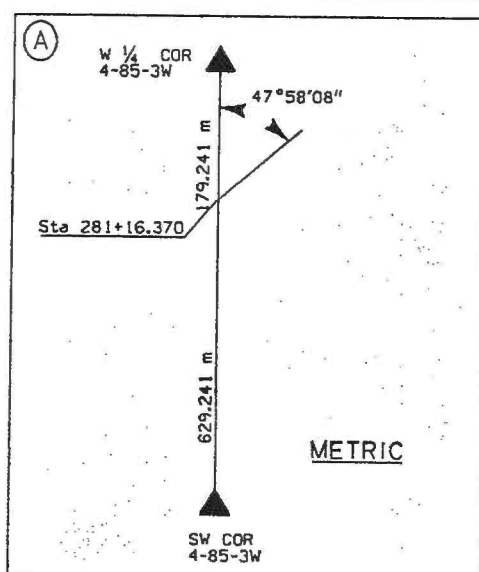
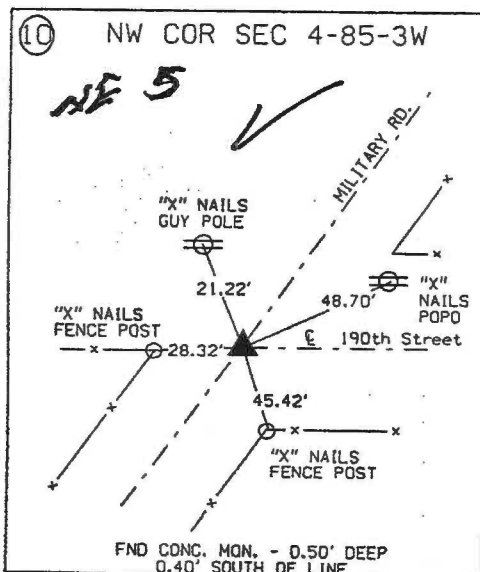
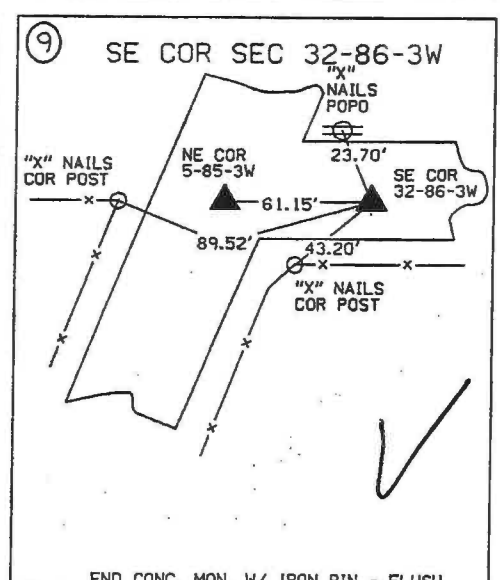
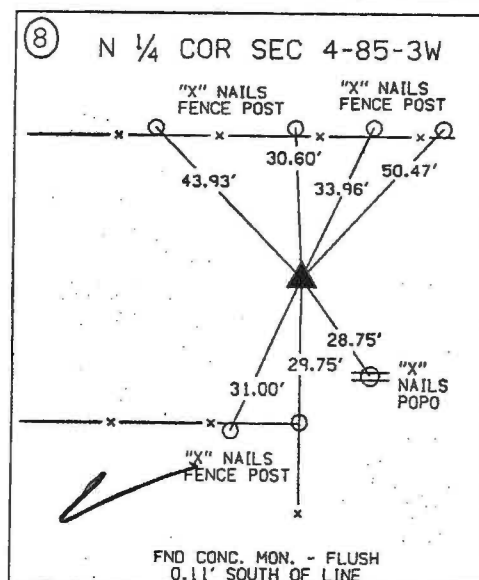
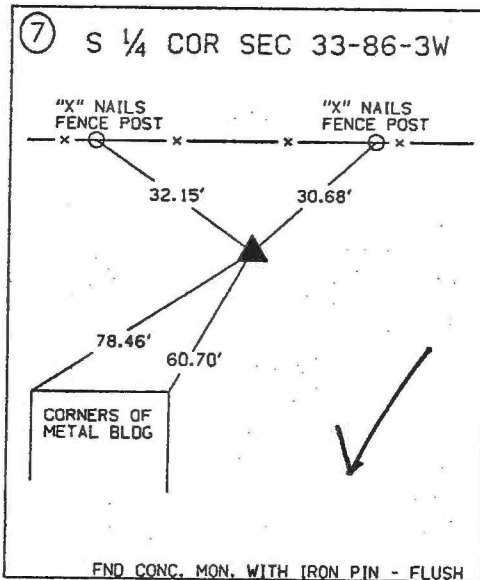
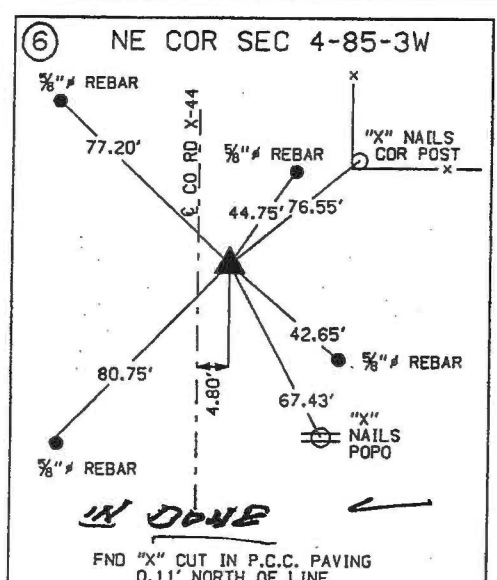
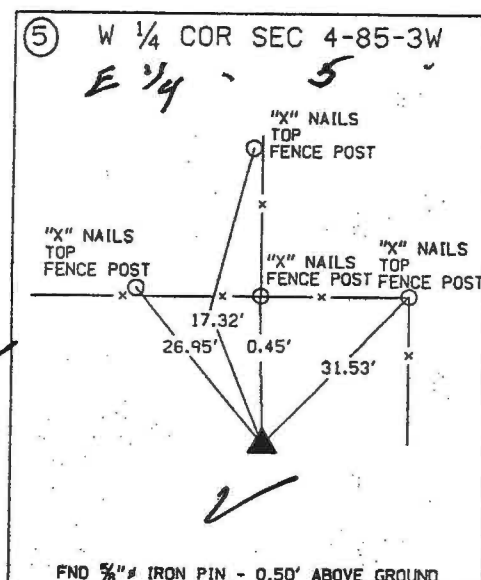
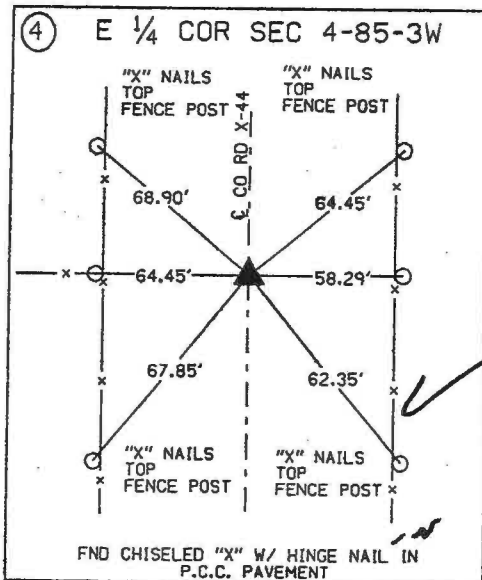
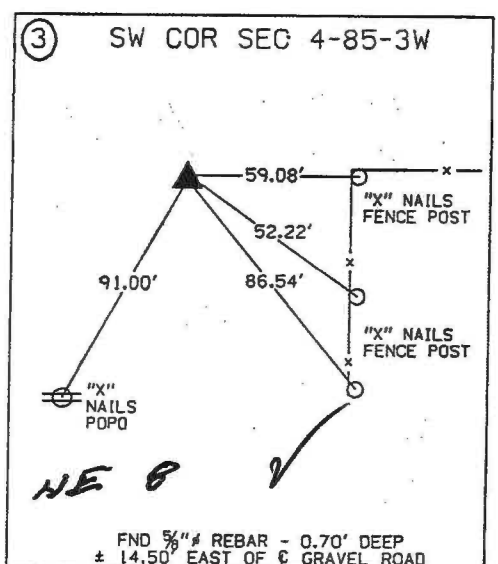
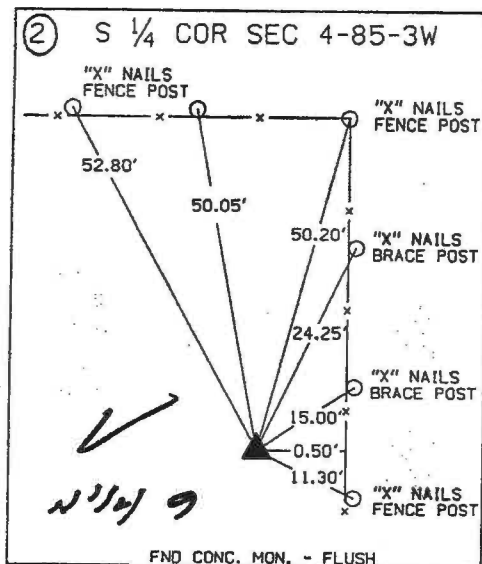
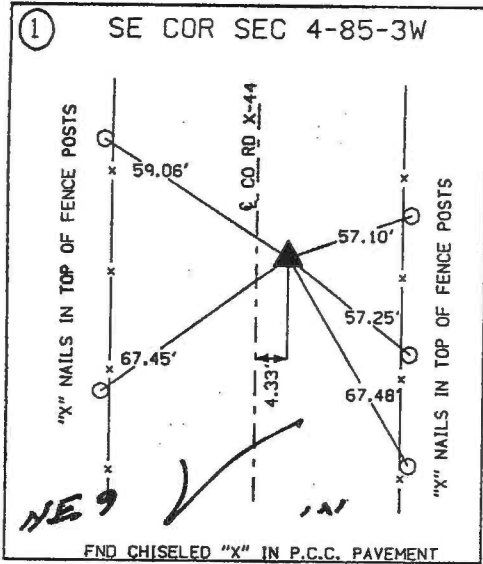
EARTH TECH



	I hereby certify that this Land Surveying document was prepared by me or under my direct personal supervision and that I am a duly Licensed Land Surveyor under the laws of the State of Iowa.	
	<i>Michael R. Fagle</i>	1-21-99
	MICHAEL R. FAGLE	Date
	License number 8505	
	My license renewal date is December 31, 2000	
Pages or sheets covered by this seal:		
<u>Two (2)</u>		

METRIC

UNITED STATES PUBLIC SECTION CORNER CERTIFICATION
AND LAND CORNER SURVEY
SECTION 4 T-85N R-3W



ALL TIES ARE ENGLISH UNLESS OTHERWISE NOTED