

COPY

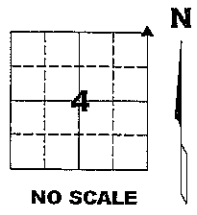
Jones County Iowa  
 Marie Krutzfield, Recorder  
**Fee Book 2010 3407**  
 12/09/2010 @1155AM  
 ZSC SEC COR CERT  
 Book: Page: # Pages: 1  
 Total Fees: \$0.00

PREPARED BY  
**CLARENCE J. WALTON, JONES COUNTY ENGINEER'S OFFICE, 19501 HWY. 64, ANAMOSA, IOWA, 52205 (319) 462-3785**

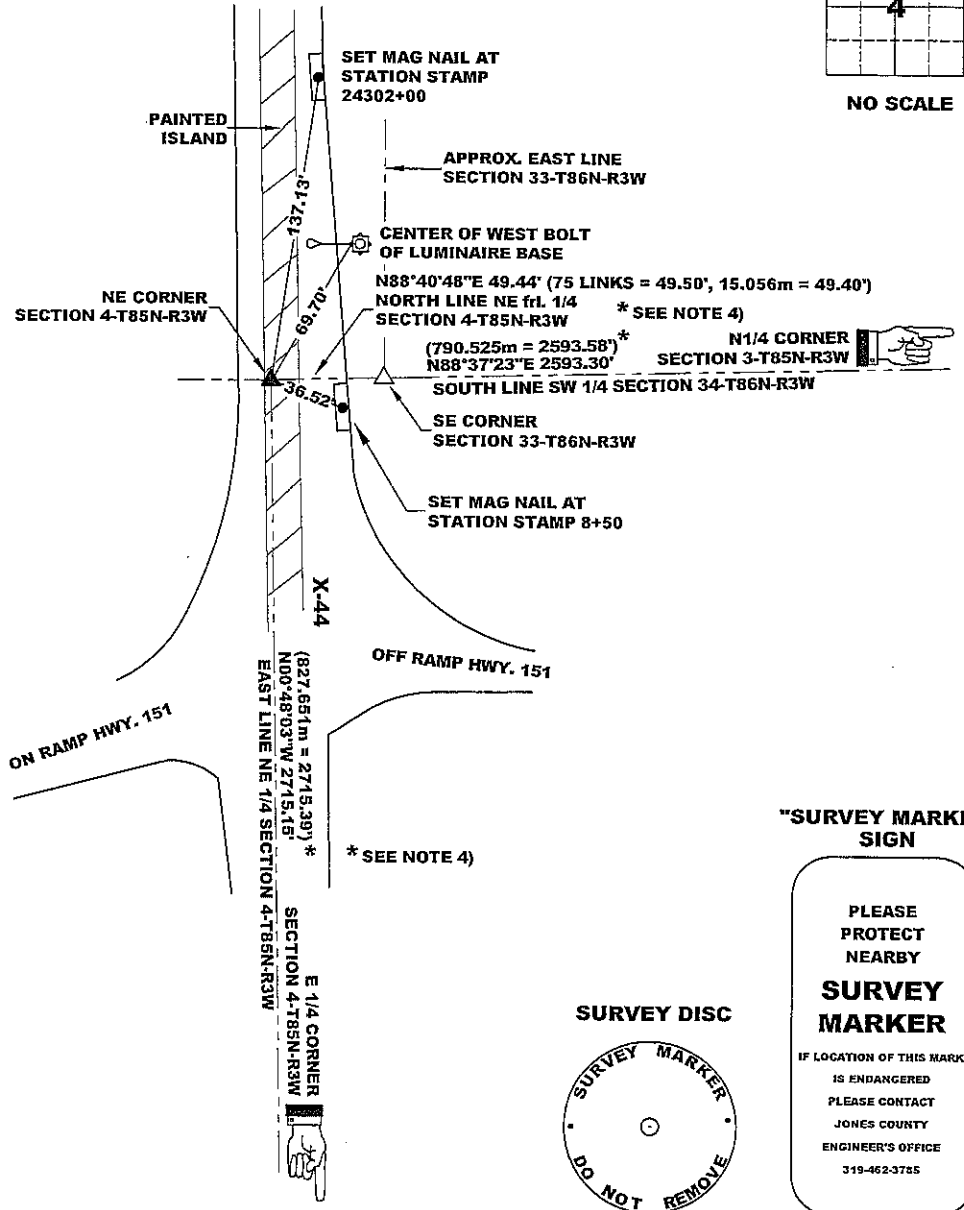
**UNITED STATES PUBLIC LAND  
 SURVEY CORNER CERTIFICATE**  
**LAND SURVEY MONUMENTS SITUATED IN SECTION 4, TOWNSHIP 85 NORTH,  
 RANGE 3 WEST OF THE 5TH PRINCIPAL MERIDIAN, JONES COUNTY, IOWA.**

**PROJECT: M-1311**  
 STATE PLANE COORDINATE  
 NAD 83 IOWA NORTH  
 N 3547683.86  
 E 5547135.56

CORNER SECTION TOWNSHIP RANGE  
 NE CORNER 4 T85N R3W



- NOTES:
- 1) THE STATE PLANE COORDINATES AS SHOWN ARE FOR CONVENIENCE ONLY. THE TIES AS SHOWN SHOULD BE USED TO REPLACE THE CORNER, IF DESTROYED.
  - 2) COORDINATES AS SHOWN ARE GRID COORDINATES AND BASED ON JONES COUNTY G.P.S. CONTROL NETWORK WHICH IN TURN IS BASED ON NAD 83 IOWA NORTH DATUM.
  - 3) BASIS OF BEARINGS ARE BASED ON JONES COUNTY G.P.S. CONTROL NETWORK.
  - 4) ALL MEASUREMENTS ARE IN FEET AND DECIMALS THEREOF. LONG DISTANCES SHOWN ARE GRID DISTANCES [EXCEPTING RECORDED ( ) DISTANCES].



OPC ORANGE PLASTIC CAP  
 ( ) RECORDED AS

PREVIOUSLY RECORDED IN RECORDER'S DOCUMENT 1999 0327  
 MONUMENT DESCRIPTION AND HOW ESTABLISHED FOUND "X" CUT IN CONCRETE SLAB . REPLACED BY DRILLING HOLE IN SLAB AND SETTING 5/8"X24" REBAR WITH ORANGE PLASTIC CAP #11310 COUNTER SUNK BELOW PAVEMENT SURFACE.



I hereby certify that this land surveying document and the related survey work was performed by me or under my direct personal supervision and that I am a duly registered Land Surveyor under the laws of the State of Iowa.  
 Signed: *Clarence J. Walton* 12/9/10  
 Clarence J. Walton, L.S.  
 My Registration Renewal Date is December 31, 2011  
 Iowa License Number 11310  
 Pages or sheets covered by this seal: 1 of 1.

- FIELD BOOK MISC. 2009-2010, PAGE 148. DATE OF SURVEY: 11/9/10
- A. THERE IS NO CERTIFICATE FOR THE CORNER ON FILE WITH THE RECORDER OF THE COUNTY IN WHICH THE CORNER IS LOCATED.
  - B. THE CORNER MONUMENT HAS BEEN REPLACED OR MODIFIED.
  - C. THE SURVEYOR IN RESPONSIBLE CHARGE OF THE LAND SURVEYING ACCEPTS A CORNER POSITION THAT DIFFERS FROM THAT SHOWN IN THE PUBLIC RECORDS OF THE COUNTY IN WHICH THE CORNER IS LOCATED.
  - D. THE REFERENCE TIES REFERRED TO IN AN EXISTING PUBLIC RECORD NO LONGER EXIST.

CORNERS TO BE INDEXED			
CORNER	SECTION	TOWNSHIP	RANGE
NE CORNER	4	85N	3W
NW CORNER	3	85N	3W

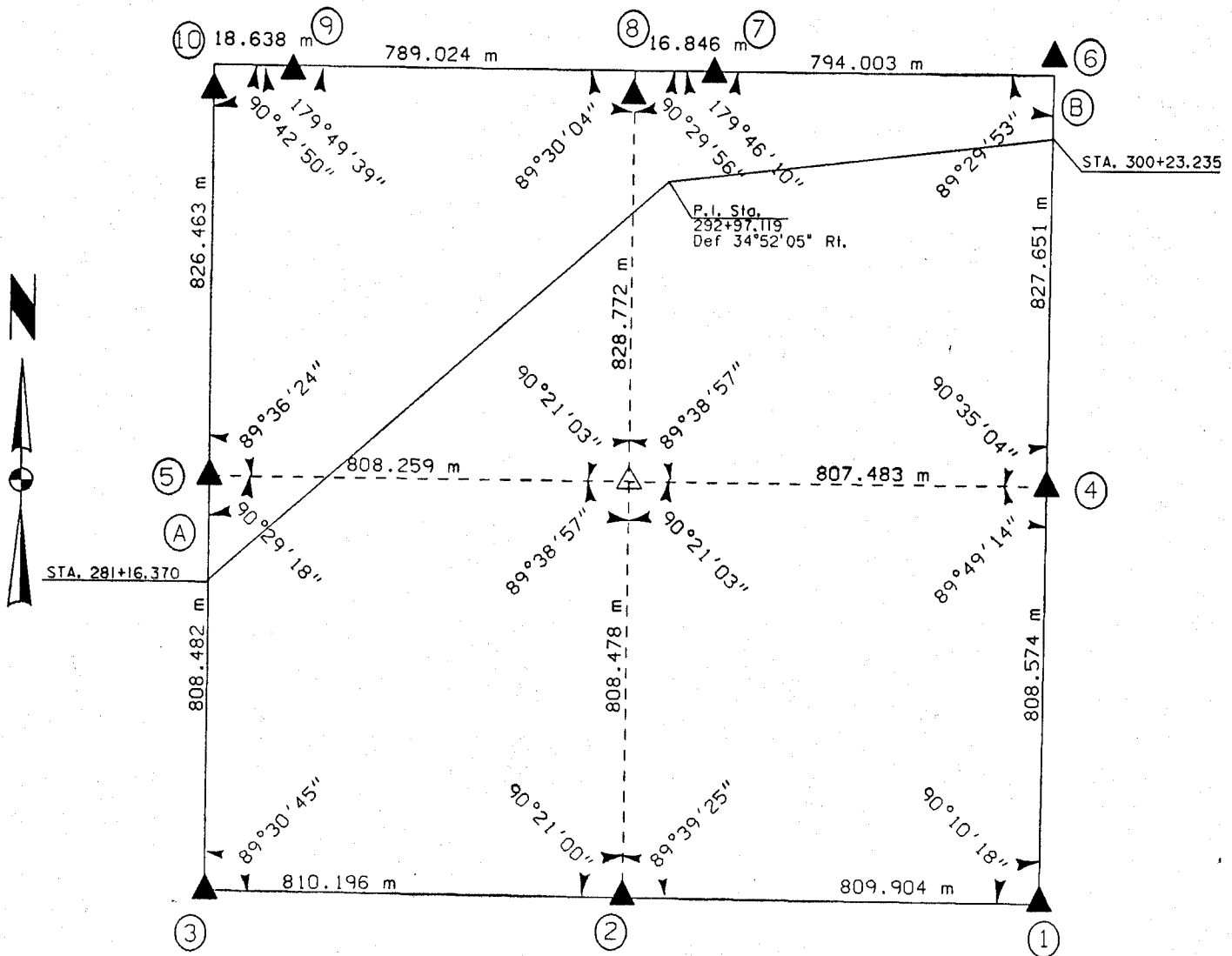
**JONES COUNTY ENGINEER'S OFFICE**  
  
 19501 HWY. 64, ANAMOSA, IOWA 52205  
 (319) 462-3785

UNITED STATES PUBLIC SECTION CORNER CERTIFICATION  
AND LAND CORNER SURVEY  
SECTION 4 T-85N R-3W

MADE FOR  
IOWA DEPARTMENT OF TRANSPORTATION FOR THE PURPOSE OF  
RIGHT OF WAY DESCRIPTIONS ON PRIMARY ROAD No. U.S. 151

MADE BY  
MICHAEL R. FAGLE R.L.S. No. 8505  
JONES COUNTY, IOWA NHS-151-3(84)--19-57  
APRIL 1998 THRU OCTOBER 1998

ALL DISTANCES WERE CAREFULLY MEASURED AND MAY NOT AGREE WITH ROAD SURVEY STATIONING



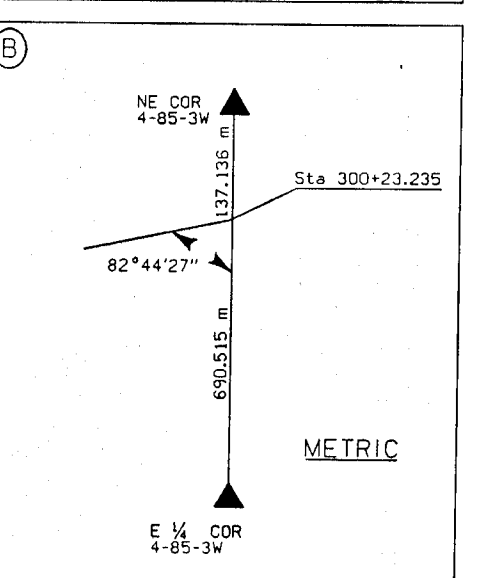
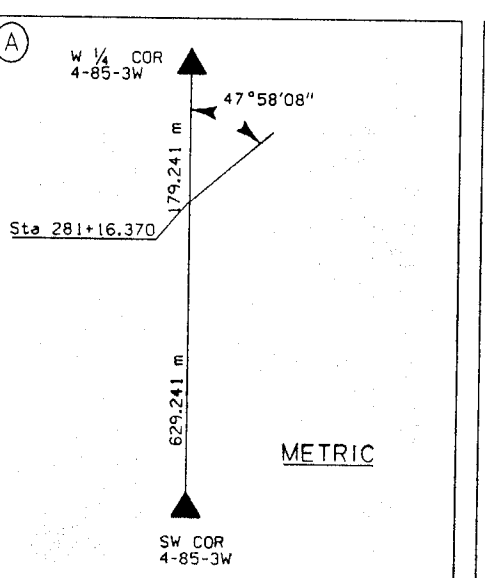
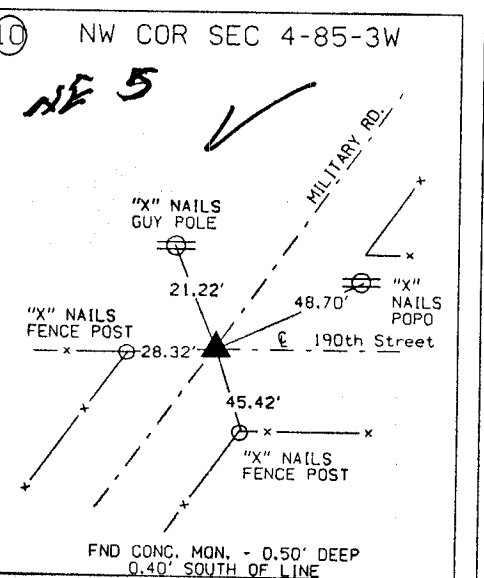
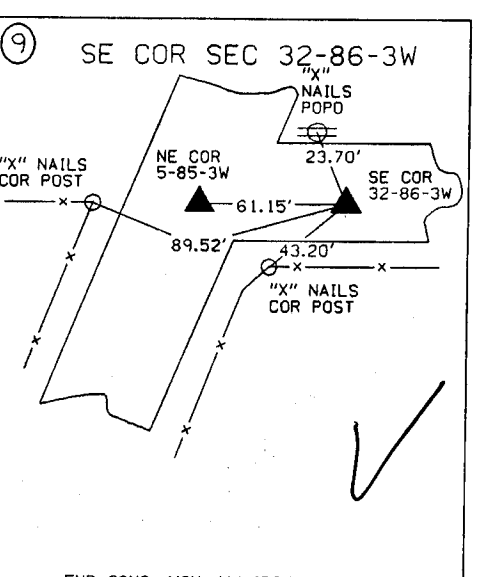
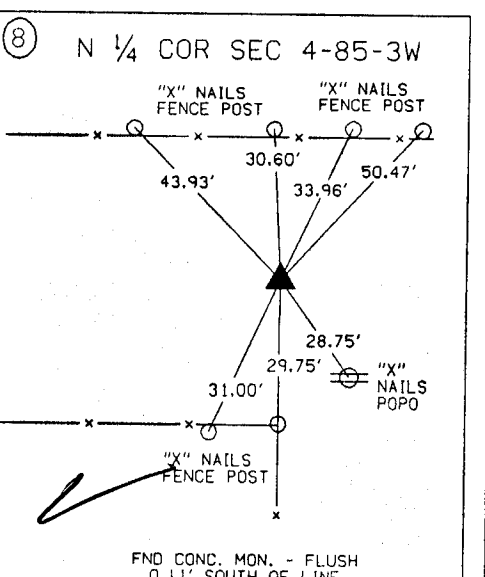
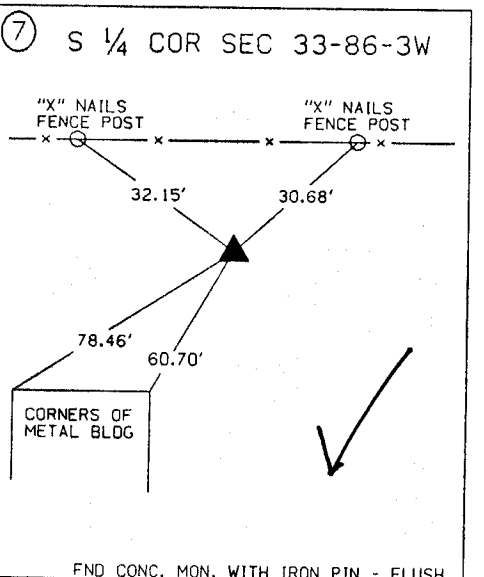
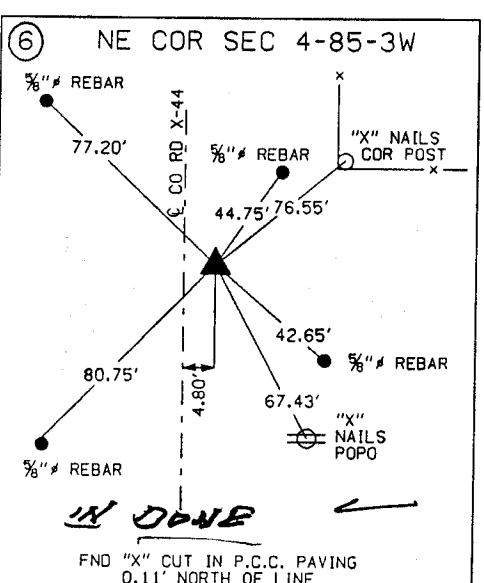
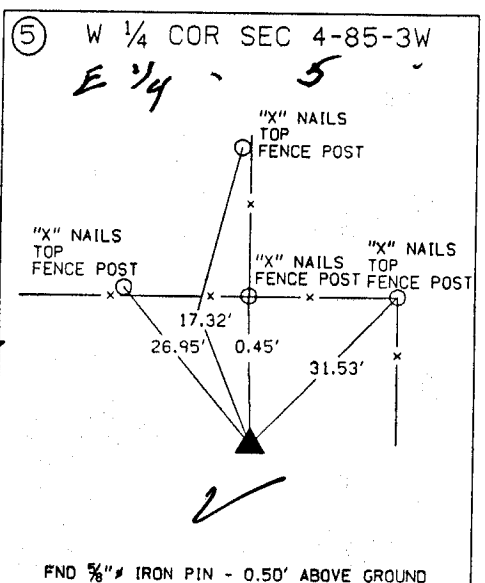
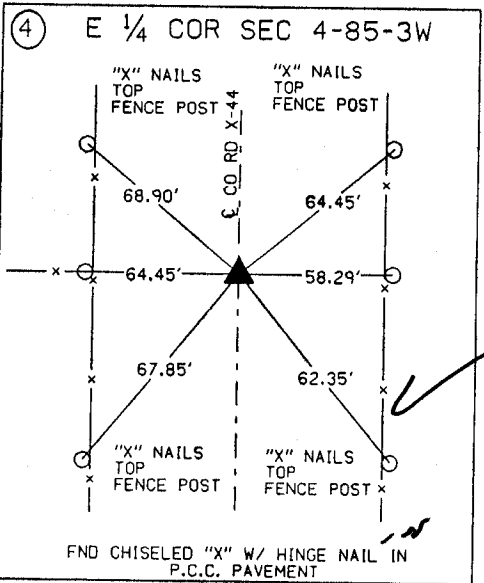
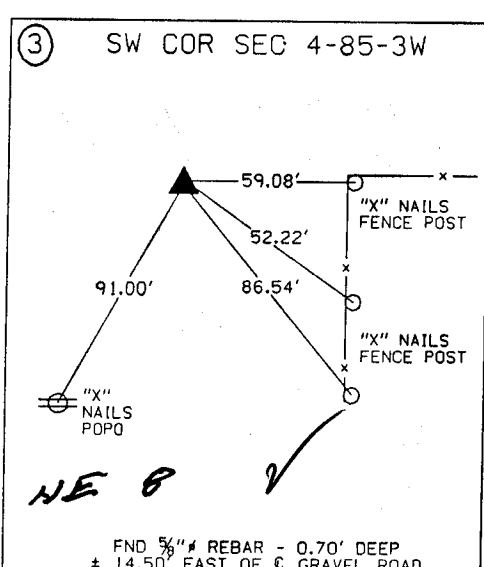
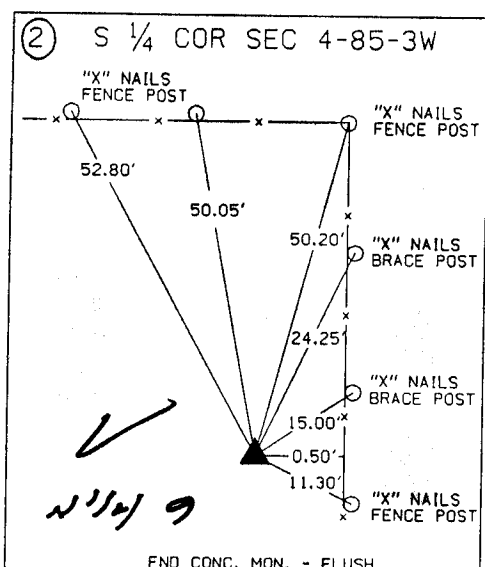
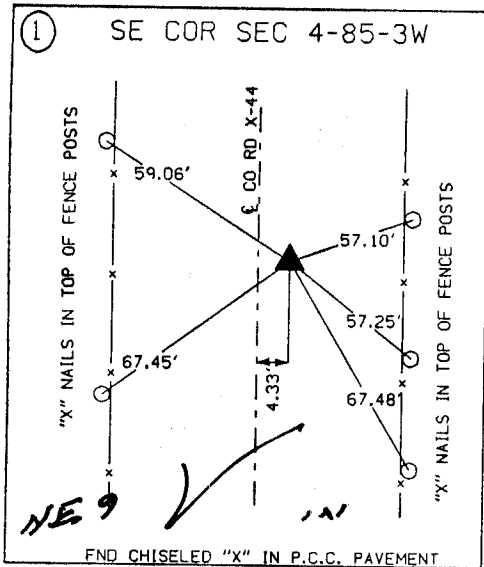
EARTH TECH

	I hereby certify that this Land Surveying document was prepared by me or under my direct personal supervision and that I am a duly Licensed Land Surveyor under the laws of the State of Iowa.
	Michael R. Fagle 1-21-99 MICHAEL R. FAGLE Date License number 8505 My license renewal date is December 31, 2000 Pages or sheets covered by this seal: Two (2)

**METRIC**

UNITED STATES PUBLIC SECTION CORNER CERTIFICATION  
AND LAND CORNER SURVEY

SECTION 4 T-85N R-3W



**ALL TIES ARE ENGLISH UNLESS OTHERWISE NOTED**