

COPY

Jones County Marie Krutzfield Recorder
 Fee Book 2012 3551
 12/03/2012 @1131AM # Pages 1
 ZSC SEC COR CERT
 Total Fees: \$7.00

PREPARED BY
 STEPHEN MICHAEL BRAIN, BRAIN ENGINEERING, INC., 1540 MIDLAND COURT NE, CEDAR RAPIDS, IOWA PH. (319) 294-9424

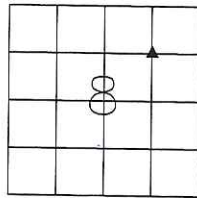
UNITED STATES PUBLIC LAND SURVEY CORNER CERTIFICATE

LAND SURVEY MONUMENTS SITUATED IN SECTION 8, TOWNSHIP 85 NORTH
 RANGE 3 WEST OF THE 5TH P.M., JONES COUNTY, IOWA.

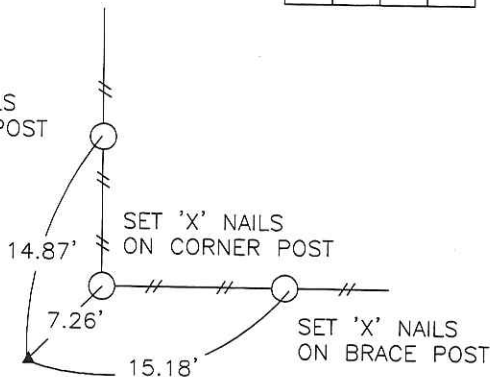
NO SCALE



SW CORNER NE 1/4 NE 1/4



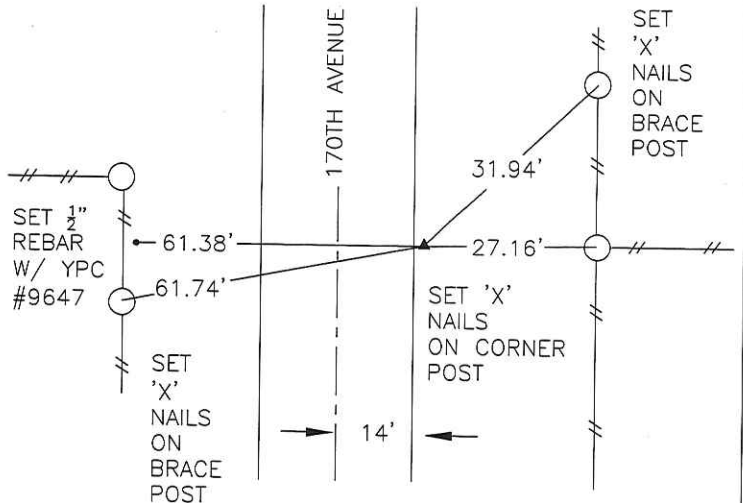
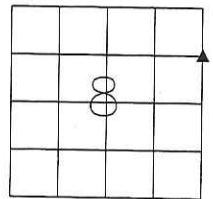
SET 'X' NAILS
 ON BRACE POST



NO SCALE



SE CORNER NE 1/4 NE 1/4



PREVIOUSLY RECORDED IN BOOK _____ PAGE _____

MONUMENT DESCRIPTION AND HOW ESTABLISHED _____
 SET 1/2" REBAR WITH YELLOW PLASTIC CAP #9647 AT THE
 INTERSECTION OF THE MIDPOINTS OF THE FOUR SIDES OF
 THE NE 1/4 OF SECTION 8.

PREVIOUSLY RECORDED IN BOOK _____ PAGE _____

MONUMENT DESCRIPTION AND HOW ESTABLISHED _____
 SET 1/2" REBAR AT THE MIDPOINT ON THE LINE BETWEEN
 THE NE CORNER AND THE EAST 1/4 CORNER OF SECTION 8.



I hereby certify that this land surveying document
 and the related survey work was performed by me
 or under my direct personal supervision and that
 I am a duly licensed Land Surveyor under the laws
 of the State of Iowa.
 Signed Stephen Michael Brain Date 11/30/12
 Stephen Michael Brain, L.S.
 My License Renewal Date is December 31, 2012
 License Number 9647
 Pages or sheets covered by this seal: 1/1

- A.THERE IS NO CERTIFICATE FOR THE CORNER ON FILE WITH THE RECORDER OF THE COUNTY IN WHICH THE CORNER IS LOCATED
- B.THE SURVEYOR IN RESPONSIBLE CHARGE OF THE LAND SURVEYING ACCEPTS A CORNER POSITION WHICH DIFFERS FROM THAT SHOWN IN THE PUBLIC RECORDS OF THE COUNTY IN WHICH THE CORNER IS LOCATED.
- C.THE CORNER MONUMENT IS REPLACED OR MODIFIED IN ANY WAY.
- D.THE REFERENCE TIES REFERRED TO IN AN EXISTING PUBLIC RECORD ARE NOT CORRECT.

CORNERS TO BE INDEXED			
CORNER	SECTION	TOWNSHIP	RANGE
SE CORNER	8	T85N	R3 W
NE 1/4 NE 1/4			
SW CORNER	8	T85N	R3 W
NE 1/4 NE 1/4			

BRAIN ENGINEERING, INC.
 1540 MIDLAND COURT NE
 CEDAR RAPIDS, IOWA 52402
 (319) 294-9424

284912-65

VSMB

SECTION CORNER CERTIFICATE

OF
 LAND SURVEY MONUMENTS SITUATED IN SECTION 9, TOWNSHIP 85 NORTH,
 RANGE 3 WEST, OF THE FIFTH PRINCIPAL MERIDIAN, JONES, COUNTY, IOWA.

PREVIOUSLY RECORDED IN BOOK _____ AT PAGE _____

FOR RECORDER'S USE
1795 FILED
 RECORDERS OFFICE
 JONES COUNTY IOWA

REASON FOR PREPARING CERTIFICATE:

- A) THERE IS NO CERTIFICATE FOR THE CORNER ON FILE WITH THE RECORDER OF THE COUNTY IN WHICH THE CORNER IS LOCATED.
- B) CORNER POSITION DIFFERS FROM THAT SHOWN IN THE PUBLIC RECORDS OF THE COUNTY IN WHICH THE CORNER IS LOCATED.
- C) THE CORNER MONUMENT HAS BEEN REPLACED OR MODIFIED.
- D) THE REFERENCE TIES REFERRED TO IN AN EXISTING PUBLIC RECORD ARE INCORRECT.

93 JAN -4 AM 11:53

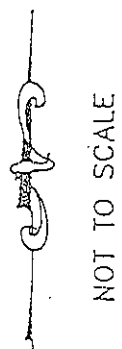
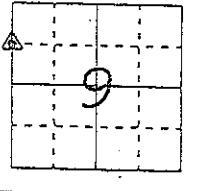
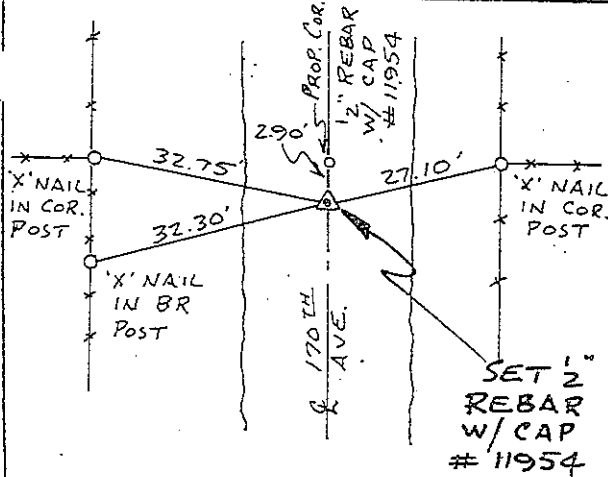
BOOK 331 PAGE 160
 LINDA J. BENDIXEN
 RECORDER S.O.D.P.

MONUMENT DESCRIPTION AND REMARKS :

N.W. CORNER - S.W. 1/4 - N.W. 1/4 SECTION 9 - T85N - R3W SET 1/2" REBAR
 W/ L.S. CAP # 11954 2" DEEP 3' SOUTH OF EAST-WEST
 FENCES ON E 170TH AVE.

RECOVERY TIE DRAWING

NW COR. - SW - NW 9-85-3



I, DANIEL J. JOHNSON, - CERTIFY THAT THE CORNER LOCATION(S) SHOWN ON THIS RECORD WERE DETERMINED BY ME OR UNDER MY DIRECTION AND CONTROL AND THAT THIS U.S. PUBLIC LAND SURVEY MONUMENT RECORD IS CORRECT AND COMPLETE TO THE BEST OF MY KNOWLEDGE AND BELIEF.

Daniel J. Johnson
 DANIEL J. JOHNSON L.S. NO 11954 DATE 12-30-92

DZMONT A GOVERNMENT CORNER O 5/8" TIC PIN SET --- CENTERLINE - - - EXISTING FENCE LINE - - - R.O.X. LINE	SHEET NO: _____	U.S. PUBLIC LAND SURVEY RECORD		HALL AND HALL ENGINEERS, INC. 226 29TH STREET DRIVE S.E. CEDAR RAPIDS, IOWA 52403 319-362-9548						
	PROJECT NO: _____	KRAIG DIRKS SURVEY								
D N R W B	C K D J J	A P G D M	D A T E	12-29-92	S C A L E	N O N E	P N O	O T. 26	P N O	47.52