

2006 2005

FILED  
RECORDERS OFFICE  
JONES COUNTY IOWA

06 MAY 24 PM 2:45

MARK KRUTZFIELD 7.00 Pd  
RECORDER

DENNIS R. KUNZE IOWA DEPARTMENT OF TRANSPORTATION P.O. BOX 3150 CEDAR RAPIDS, IOWA 52406-3150 PH. (319)364-0235

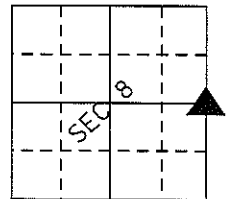
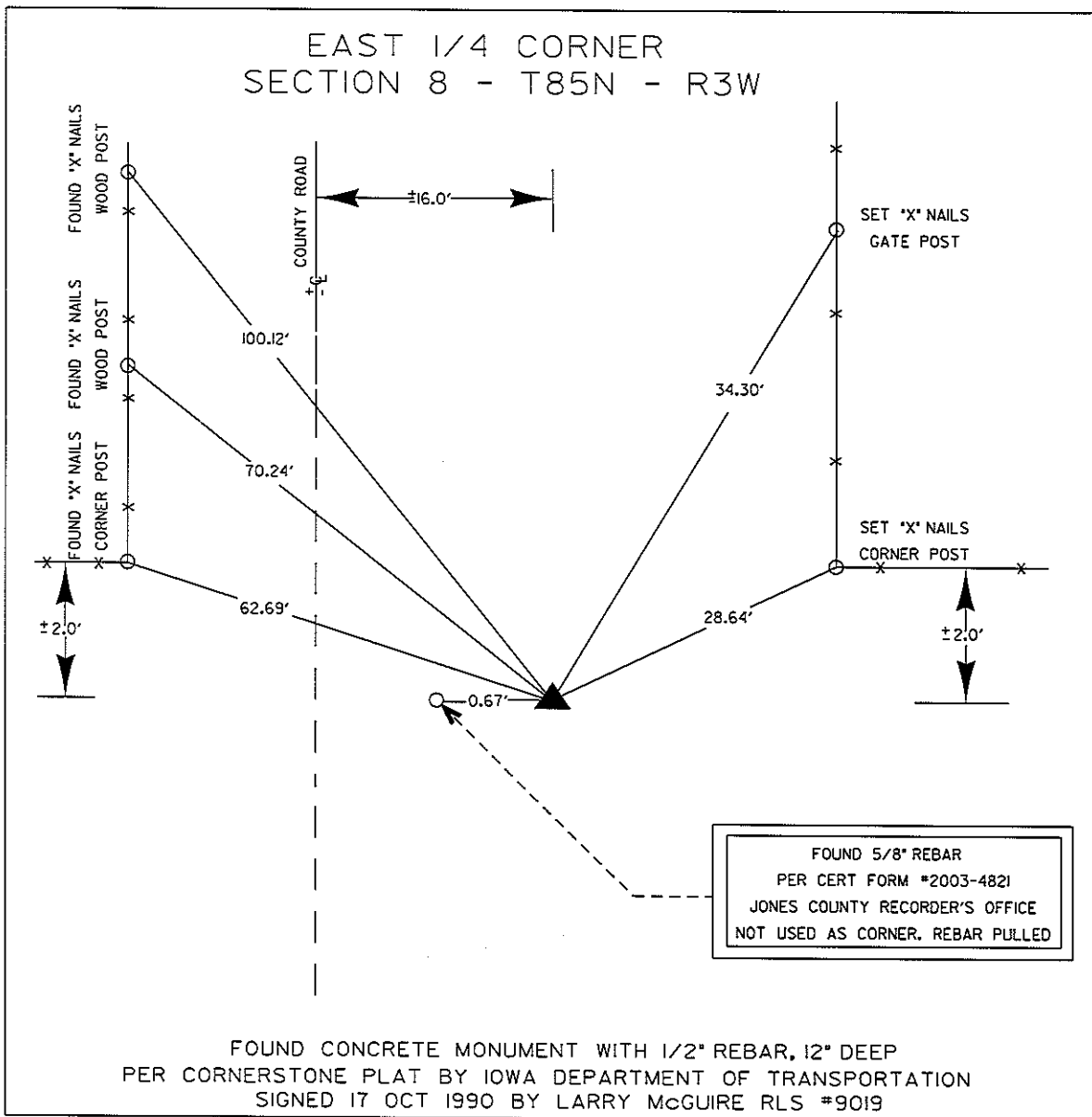
UNITED STATES PUBLIC LAND SURVEY CORNER CERTIFICATE  
OF

LAND SURVEY MONUMENTS SITUATED IN SECTION 8, TOWNSHIP 85 NORTH, RANGE 3 WEST, OF THE 5TH PRINCIPAL MERIDIAN JONES COUNTY IOWA.

PREVIOUSLY RECORDED IN #2003-4821 IN COUNTY RECORDER'S OFFICE.  
(book, page, document number, etc.)

(Show reason for preparing this certificate, the evidence and detailed procedures used in establishing the corner positions and monumentation found or placed.)

MONUMENT DESCRIPTION AND REMARKS: FOUND 5/8" REBAR PER CERT FORM #2003-4821 NOT USED AS CORNER. REBAR PULLED  
FOUND CONCRETE MONUMENT WITH 1/2" REBAR, 12" DEEP PER CORNERSTONE PLAT BY IOWA DEPARTMENT OF TRANSPORTATION SIGNED 17 OCT 1990 BY LARRY McGUIRE RLS #9019  
SECTION CORNER WAS USED FOR EXCESS LAND SURVEY FOR THE IA. DEPT. OF TRANSPORTATION



LEGEND  
 ▲ = SECTION CORNER  
 \*-\* = FENCE

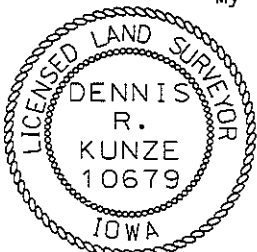
I hereby certify that this land surveying document was prepared by me or under my direct personal supervision and that I am a duly licensed Land Surveyor under the laws of the State of Iowa.

*Dennis R. Kunze* 5-2-2006  
DENNIS R. KUNZE DATE:

License number 10679  
My license renewal date is December 31, 2006

Pages covered by this seal:

This Page



LAND CORNERS TO BE RECORDED

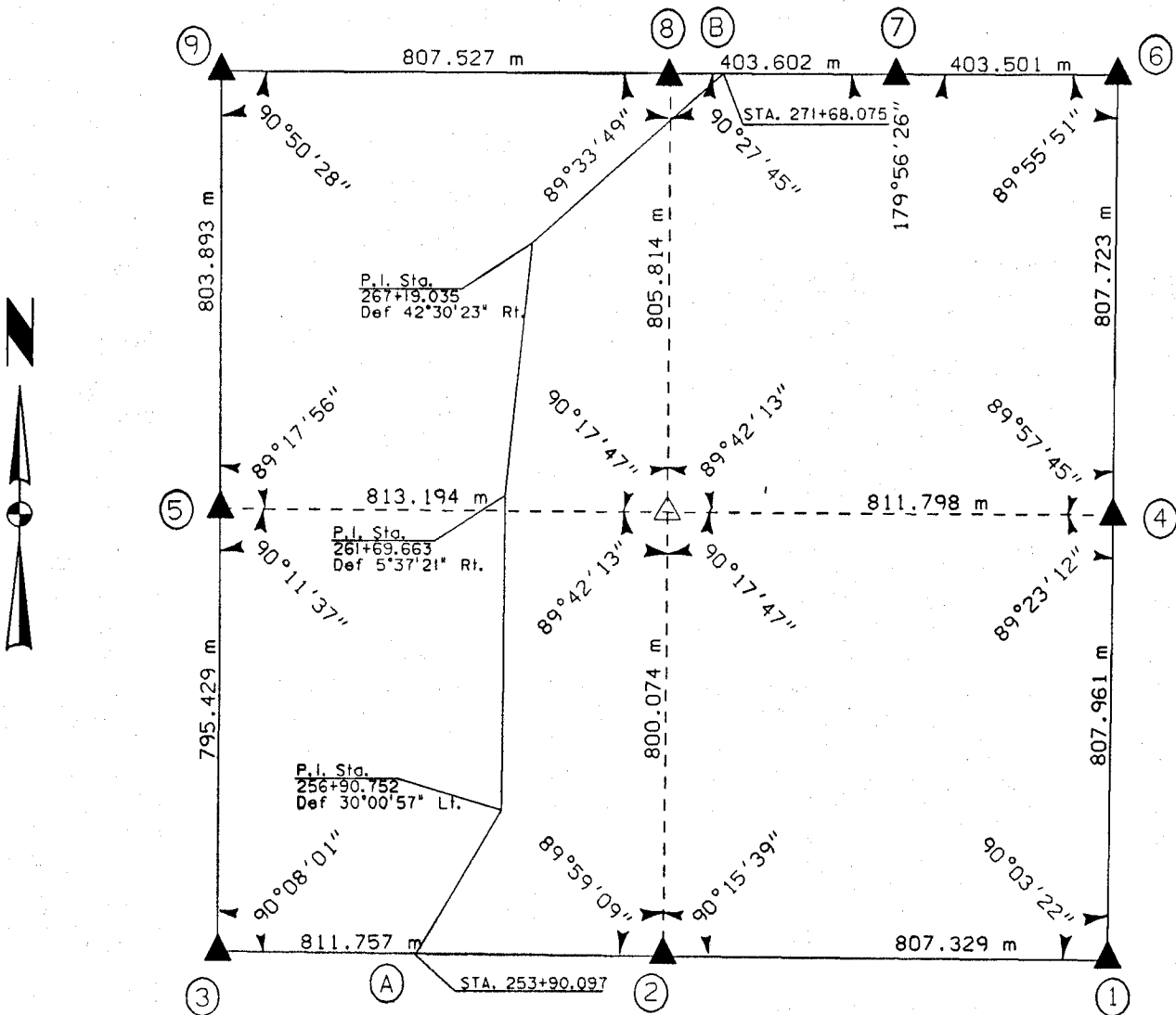
Corners	Section	Twp.	Range
EAST 1/4 CORNER	8	85N	3W

UNITED STATES PUBLIC SECTION CORNER CERTIFICATION  
AND LAND CORNER SURVEY  
SECTION 8 T-85N R-3W

MADE FOR  
IOWA DEPARTMENT OF TRANSPORTATION FOR THE PURPOSE OF  
RIGHT OF WAY DESCRIPTIONS ON PRIMARY ROAD No. U.S. 151

MADE BY  
MICHAEL R. FAGLE R.L.S. No. 8505  
JONES COUNTY, IOWA NHS-151-3(84)--19-57  
APRIL 1998 THRU OCTOBER 1998

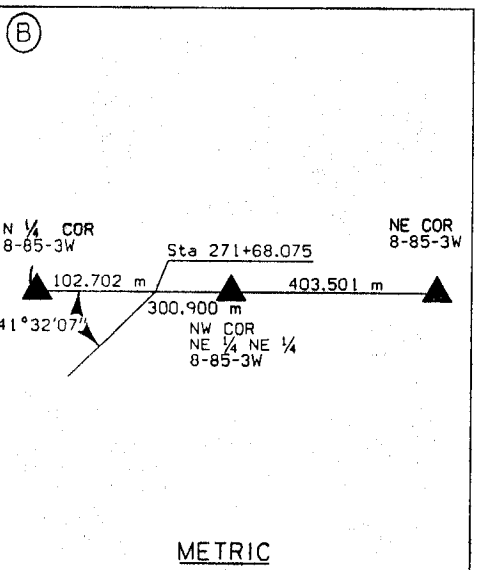
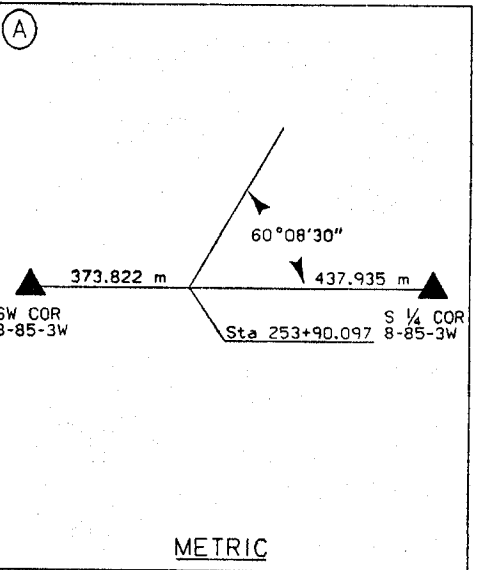
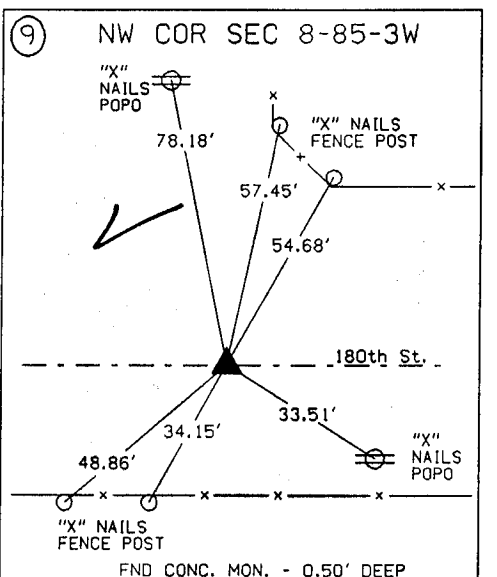
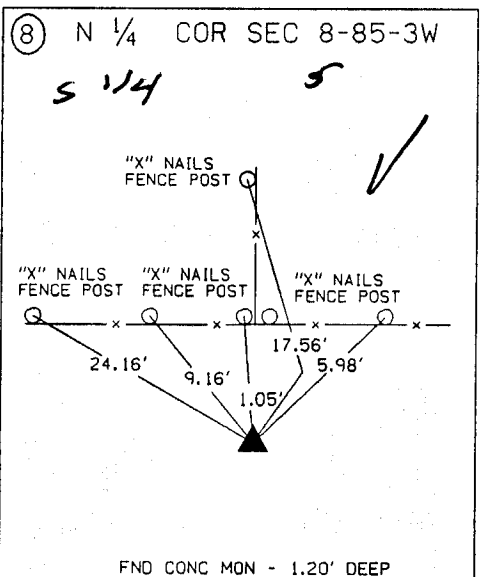
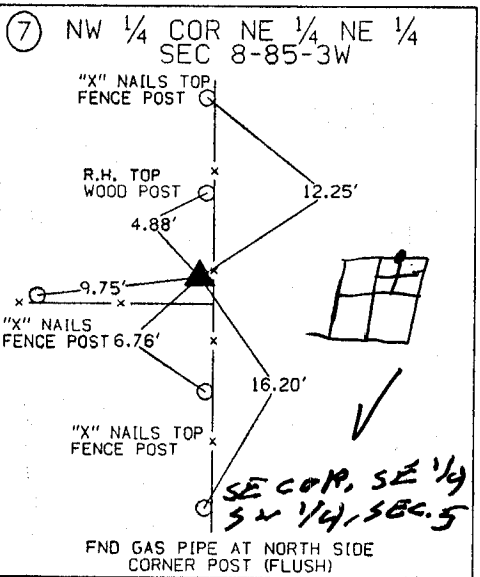
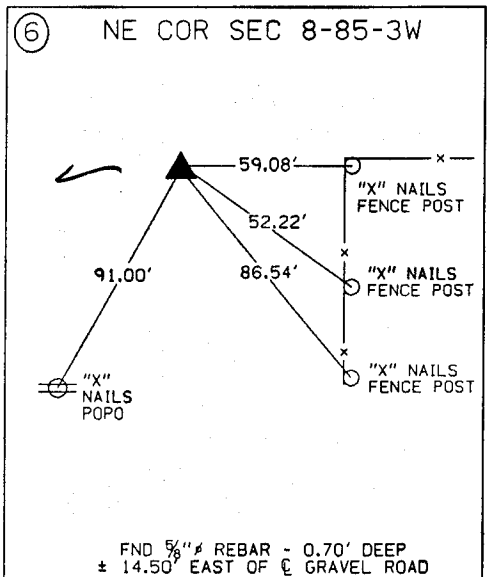
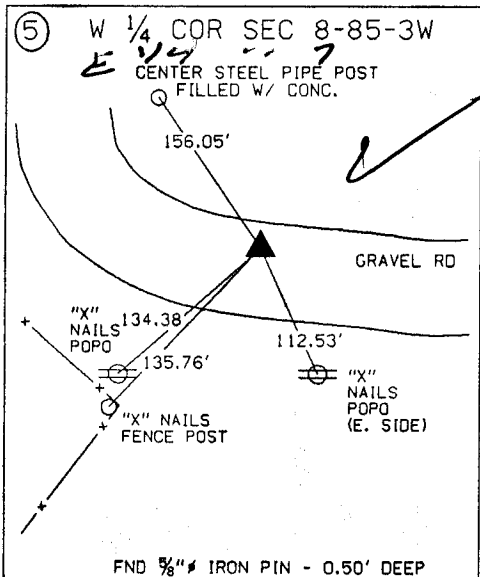
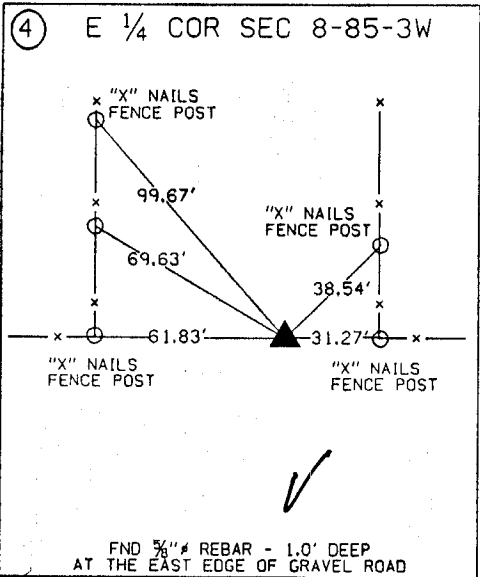
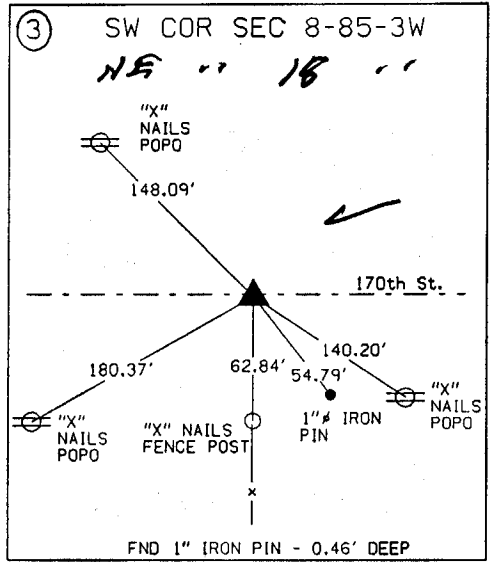
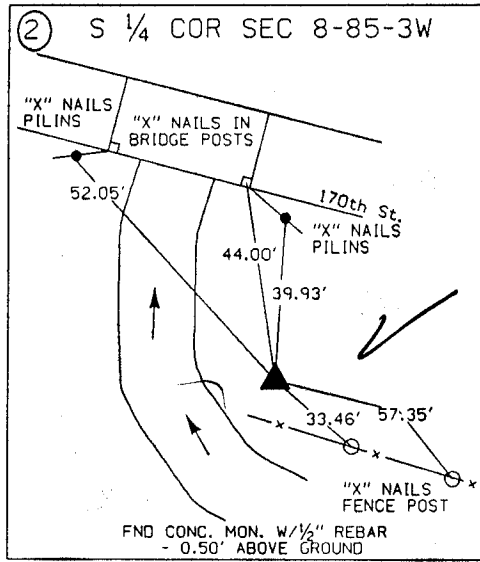
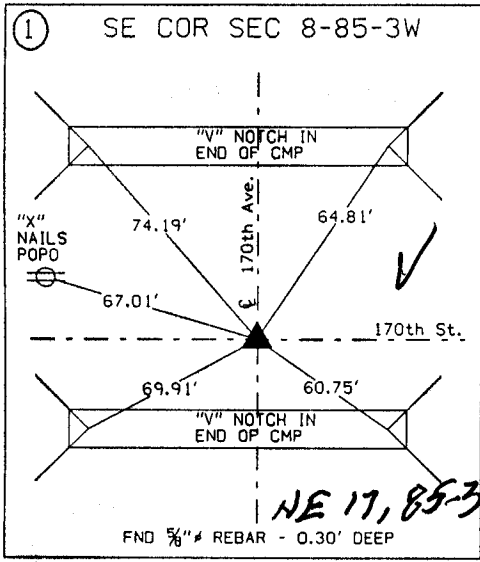
ALL DISTANCES WERE CAREFULLY MEASURED AND MAY NOT AGREE WITH ROAD SURVEY STATIONING



	I hereby certify that this Land Surveying document was prepared by me or under my direct personal supervision and that I am a duly Licensed Land Surveyor under the laws of the State of Iowa.
	Michael R. Fagle 1-21-99 MICHAEL R. FAGLE Date
	License number 8505
	My license renewal date is December 31, 2000
	Pages or sheets covered by this seal: Two (2)

**METRIC**

UNITED STATES PUBLIC SECTION CORNER CERTIFICATION  
AND LAND CORNER SURVEY  
SECTION 8 T-85N R-3W



**ALL TIES ARE ENGLISH UNLESS OTHERWISE NOTED**