

COPY

Jones County Marie Krutzfield Recorder
 Fee Book 2012 3551
 12/03/2012 @1131AM # Pages 1
 ZSC SEC COR CERT
 Total Fees: \$7.00

PREPARED BY
 STEPHEN MICHAEL BRAIN, BRAIN ENGINEERING, INC., 1540 MIDLAND COURT NE, CEDAR RAPIDS, IOWA PH. (319) 294-9424

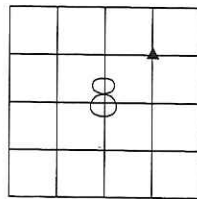
UNITED STATES PUBLIC LAND SURVEY CORNER CERTIFICATE

LAND SURVEY MONUMENTS SITUATED IN SECTION 8, TOWNSHIP 85 NORTH
 RANGE 3 WEST OF THE 5TH P.M., JONES COUNTY, IOWA.

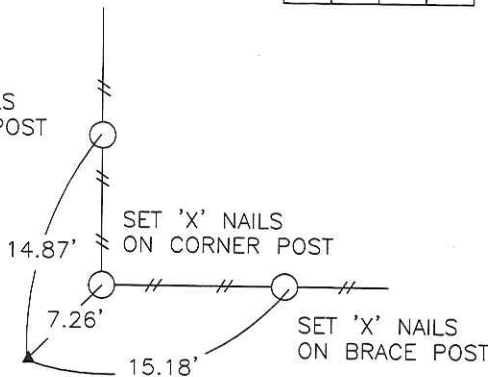
NO SCALE



SW CORNER NE 1/4 NE 1/4



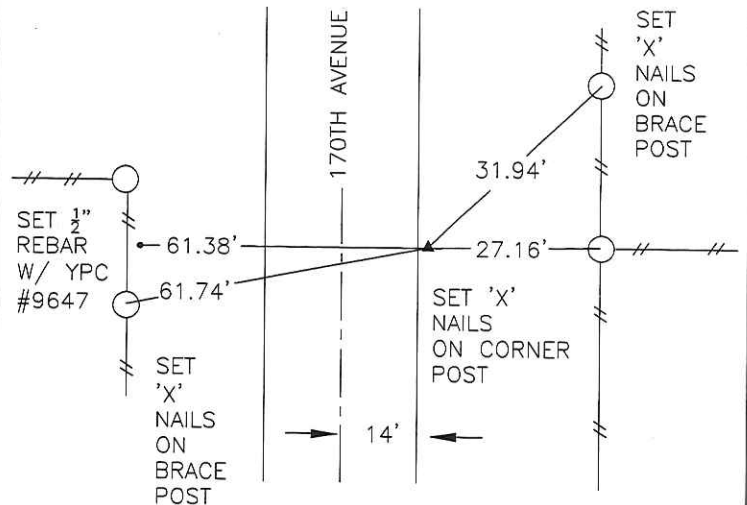
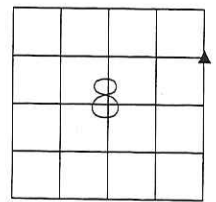
SET 'X' NAILS
ON BRACE POST



NO SCALE



SE CORNER NE 1/4 NE 1/4



PREVIOUSLY RECORDED IN BOOK _____ PAGE _____

MONUMENT DESCRIPTION AND HOW ESTABLISHED _____
 SET 1/2" REBAR WITH YELLOW PLASTIC CAP #9647 AT THE
 INTERSECTION OF THE MIDPOINTS OF THE FOUR SIDES OF
 THE NE 1/4 OF SECTION 8.

PREVIOUSLY RECORDED IN BOOK _____ PAGE _____

MONUMENT DESCRIPTION AND HOW ESTABLISHED _____
 SET 1/2" REBAR AT THE MIDPOINT ON THE LINE BETWEEN
 THE NE CORNER AND THE EAST 1/4 CORNER OF SECTION 8.



I hereby certify that this land surveying document
 and the related survey work was performed by me
 or under my direct personal supervision and that
 I am a duly licensed Land Surveyor under the laws
 of the State of Iowa.
 Signed _____ Date 11/30/12

Stephen Michael Brain, L.S.
 My License Renewal Date Is December 31, 2012
 License Number 9647
 Pages or sheets covered by this seal: 1/1

- A.THERE IS NO CERTIFICATE FOR THE CORNER ON FILE WITH THE RECORDER OF THE COUNTY IN WHICH THE CORNER IS LOCATED
- B.THE SURVEYOR IN RESPONSIBLE CHARGE OF THE LAND SURVEYING ACCEPTS A CORNER POSITION WHICH DIFFERS FROM THAT SHOWN IN THE PUBLIC RECORDS OF THE COUNTY IN WHICH THE CORNER IS LOCATED.
- C.THE CORNER MONUMENT IS REPLACED OR MODIFIED IN ANY WAY.
- D.THE REFERENCE TIES REFERRED TO IN AN EXISTING PUBLIC RECORD ARE NOT CORRECT.

CORNERS TO BE INDEXED

CORNER	SECTION	TOWNSHIP	RANGE
SE CORNER	8	T85N	R3 W
NE 1/4 NE 1/4			
SW CORNER	8	T85N	R3 W
NE 1/4 NE 1/4			

BRAIN ENGINEERING, INC.

1540 MIDLAND COURT NE
 CEDAR RAPIDS, IOWA 52402
 (319) 294-9424

284912-65

V/SMB