

Instrument #: 2025-1630
07/10/2025 12:12:28 PM Total Pages: 1
ZSC SECTION CORNER CERTIFICATE
Recording Fee: \$7.00 Transfer Tax: \$0
Sheri L. Jones, Recorder, Jones County Iowa



PREPARED BY: RANDALL L. RATTENBORG 105 WEST MAIN STREET MANCHESTER, IA 52057, 563-927-2434

UNITED STATES PUBLIC LAND SURVEY CORNER CERTIFICATE

Land Survey Monuments situated in Section 3 , Township 85 North, Range 3 West of the Fifth Principal Meridian,
JONES County, Iowa.

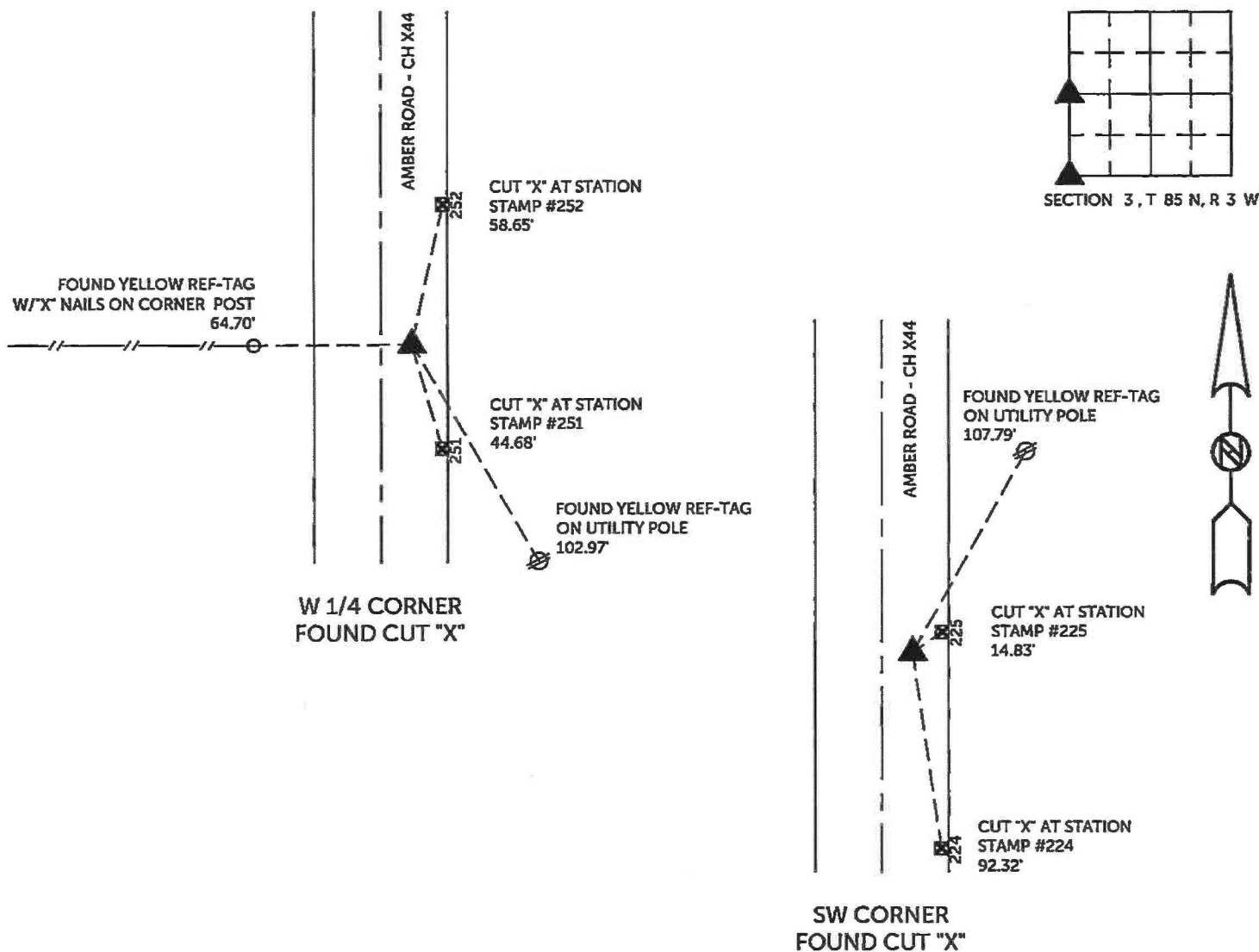
Previously recorded in County Recorder's Office in INSTRUMENT #2015-3125
(book, page, document number, etc.)

W 1/4 CORNER; Found cut "X". This Corner Certificate being issued due to missing corner tie objects.

SW CORNER; Found cut "X". This Corner Certificate being issued due to missing corner tie objects.

PLAN VIEW

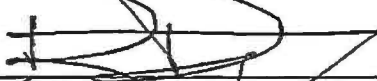
(Show a minimum of three reference ties to durable physical objects, relevant monuments and physical conditions that will enable recovery of the corner.)



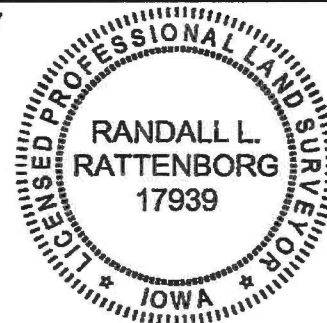
TIES ARE TO PLAT PARCEL 2025-39
IN SECTION 3, T 85 N, R 3 W

BURRINGTON GROUP, INC. PROJECT NO. 25-059

I HEREBY CERTIFY THAT THIS LAND SURVEYING DOCUMENT
WAS PREPARED AND THE RELATED SURVEY WORK WAS
PERFORMED BY ME OR UNDER MY DIRECT PERSONAL
SUPERVISION AND THAT I AM A DULY LICENSED PROFESSIONAL
LAND SURVEYOR UNDER THE LAWS OF THE STATE OF IOWA.

 7/8/2025
Randall L. Rattenborg, P.L.S. License #17939 Date
My license renewal date is December 31, 2025
List Corners to be Indexed: Section Township Range
W 1/4 CORNER 3 T 85N R 3 W
SW CORNER

SEAL COVERS THIS SHEET ONLY



 **BURRINGTON GROUP, INC.**
Civil Engineering | Land Surveying
105 W. Main Street Manchester, Iowa 52057

Instrument #: 2015-3125
10/30/2015 10:21:15 AM Total Pages: 1
ZSC SECTION CORNER CERTIFICATE
Recording Fee: \$7.00 Transfer Tax: \$0
Sheri L. Jones, Recorder, Jones County Iowa



Prepared by/Return to: FEHR GRAHAM, 1919 210th Street, Manchester IA 52057 - Ph: (563)927-2060

UNITED STATES PUBLIC LAND SURVEY CORNER CERTIFICATE
OF

Land Survey Monuments situated in Section 4, Township 85 North, Range 3 West of the Fifth Principal Meridian, Jones County, Iowa.
Previously recorded in (1) I.D.O.T. Ties (2) I.D.O.T. Ties in County Recorder's Office.
(book, page, document number, etc.)

(Show reason for preparing this certificate, the evidence and detailed procedures used in establishing the corner positions and monumentation found or placed.)

Monument Description and Remarks: (1) E1/4 Corner of Section 4-T85N-R3W:

Section corner information was obtained before and set after concrete overlay project. Found 1/2" rebar w/OPC #11310 before P.C.C. overlay. Set mag nail in cut "x" in P.C.C. pavement and one new tie.

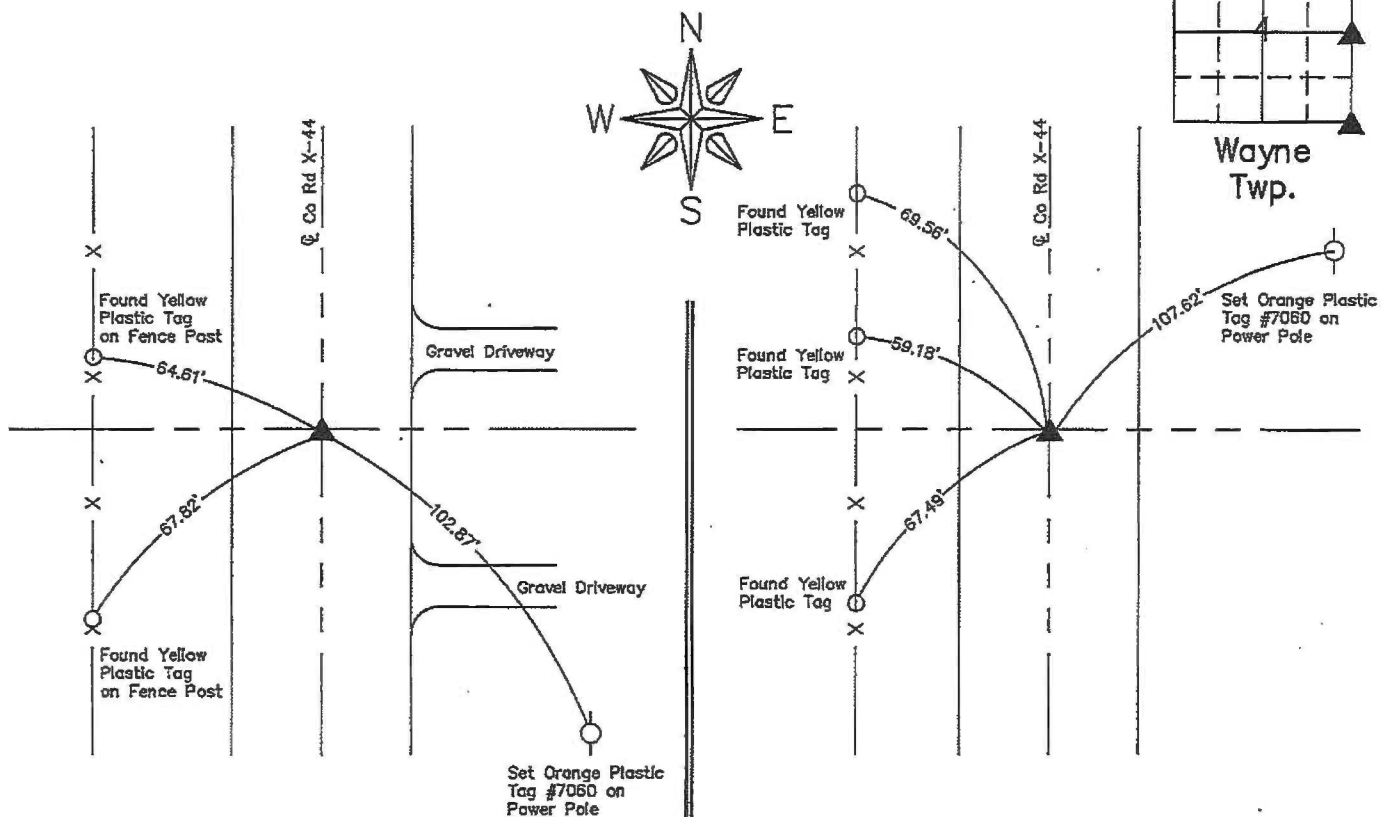
(2) SE Corner of Section 4-T85N-R3W:

Section corner information was obtained before and set after concrete overlay project. Found chiseled "x" in P.C.C. pavement before P.C.C. overlay. Set mag nail in cut "x" in P.C.C. pavement and one new tie.

PLAN VIEW

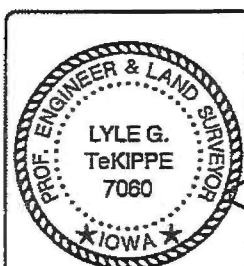
Project Number 15-321

Show a minimum of three reference ties to durable physical objects, relevant monuments and physical conditions that will enable recovery of the corner.



(1) E1/4 Corner of Sec. 4-T85N-R3W
Set Mag Nail in Cut "X" in P.C.C. Pavement

(2) SE Corner of Sec. 4-T85N-R3W
Set Mag Nail in Cut "X" in P.C.C. Pavement



I hereby certify that this land surveying document was prepared and the related survey work was performed by me or under my direct personal supervision and that I am a duly licensed Land Surveyor under the laws of the State of Iowa.

Lyle G. TeKippe, P.E. & P.L.S. Date
License Number: 7060
My license renewal date is December 31, 2016.
Sheets covered by this seal: This Sheet Only

List Corners to be Indexed

Corners	Section	Twp.	Range
E1/4	4	85N	3W
SE	4	85N	3W

G:\C3D\15\15-321\15-321-LEGAL.dwg

12/09/2010 @1157AM
ZSC SEC COR CERT
Book: Page: # Pages: 1
Total Fees: \$0.00

CLARENCE J. WALTON, JONES COUNTY ENGINEER'S OFFICE, 19501 HWY. 64, ANAMOSA, IOWA, 52205 (319) 462-3785

**LAND SURVEY MONUMENTS SITUATED IN SECTION 9, TOWNSHIP 85 NORTH,
RANGE 3 WEST OF THE 5TH PRINCIPAL MERIDIAN, JONES COUNTY, IOWA.**

CORNERS TO BE INDEXED			
CORNER	SECTION	TOWNSHIP	RANGE
NE CORNER	9	85N	3W
SE CORNER	4	85N	3W
SW CORNER	3	85N	3W
NW CORNER	10	85N	3W

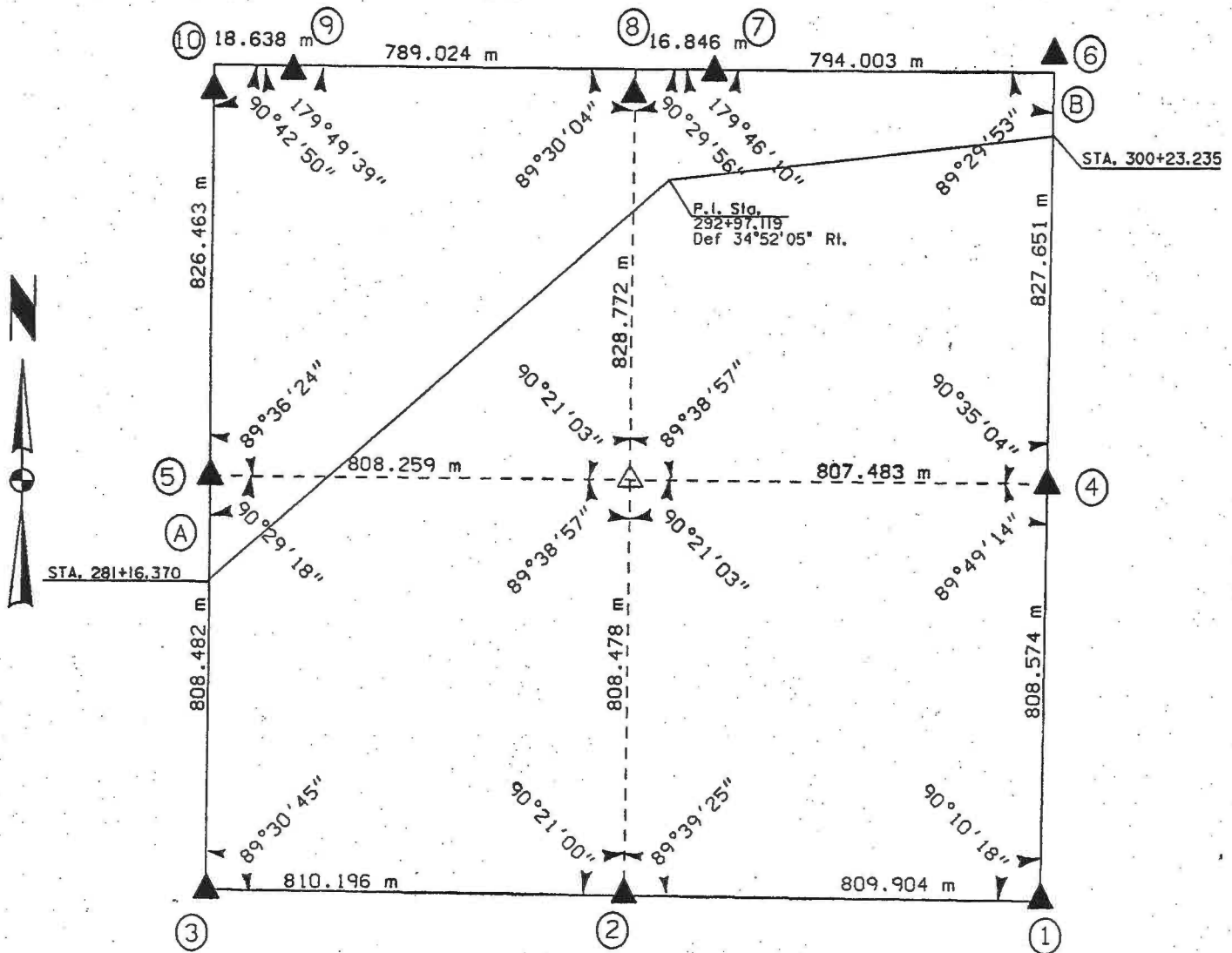
19501 HWY. 64, ANAMOSA, IOWA 52205
(319) 462-3785

UNITED STATES PUBLIC SECTION CORNER CERTIFICATION
AND LAND CORNER SURVEY
SECTION 4 T-85N R-3W

MADE FOR
IOWA DEPARTMENT OF TRANSPORTATION FOR THE PURPOSE OF
RIGHT OF WAY DESCRIPTIONS ON PRIMARY ROAD No. U.S. 151

MADE BY
MICHAEL R. FAGLE R.L.S. No. 8505
JONES COUNTY, IOWA NHS-151-3(84)--19-57
APRIL 1998 THRU OCTOBER 1998

ALL DISTANCES WERE CAREFULLY MEASURED AND MAY NOT AGREE WITH ROAD SURVEY STATIONING



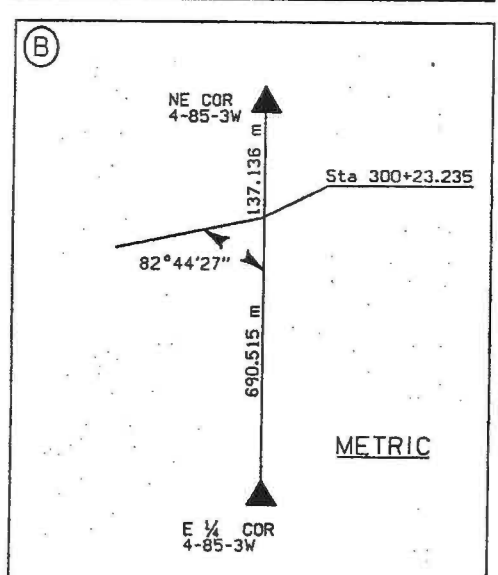
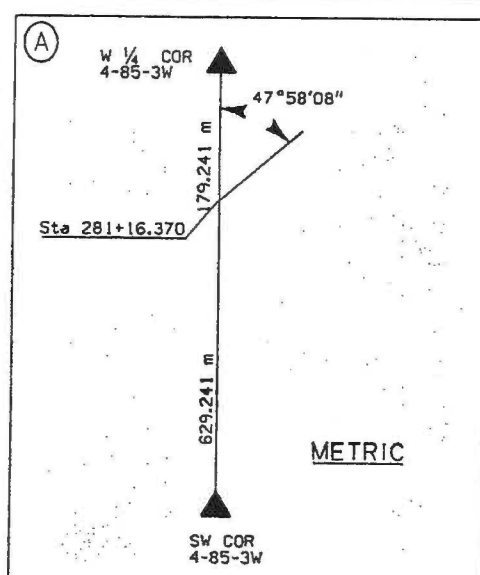
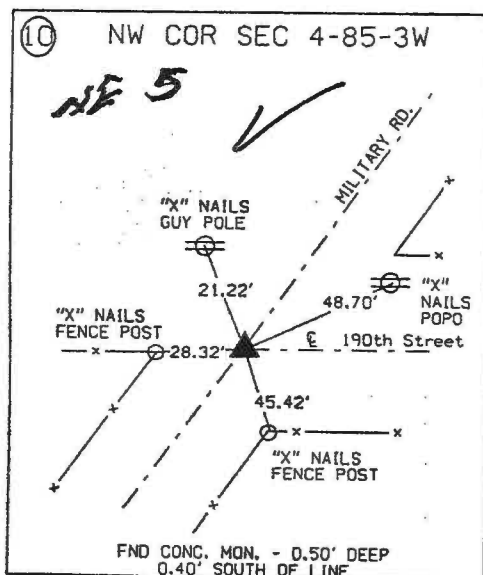
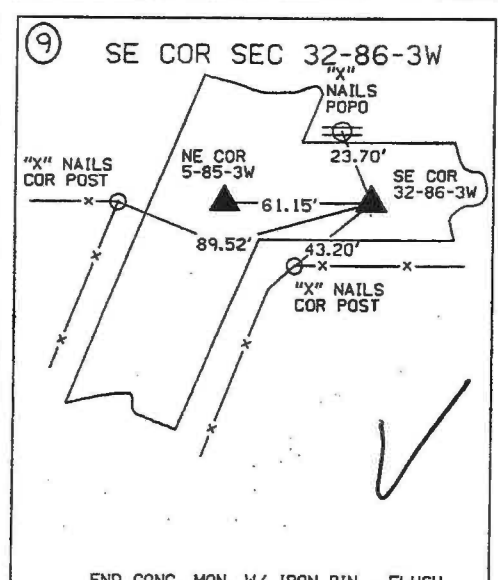
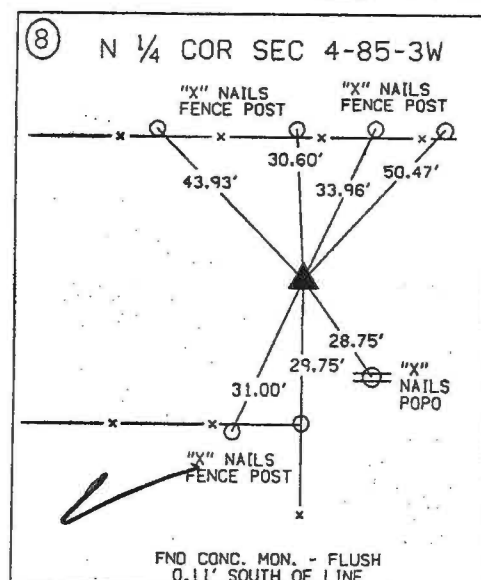
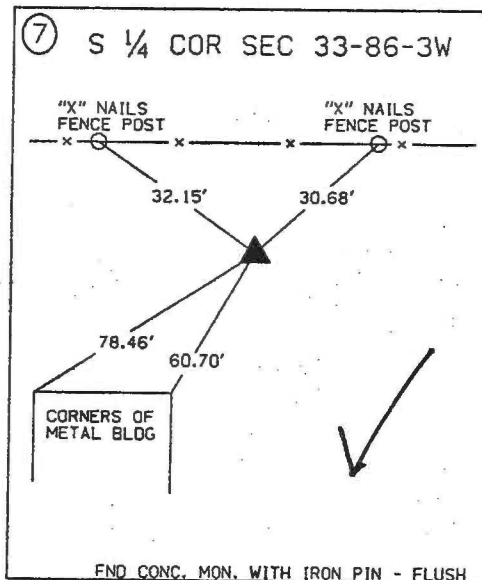
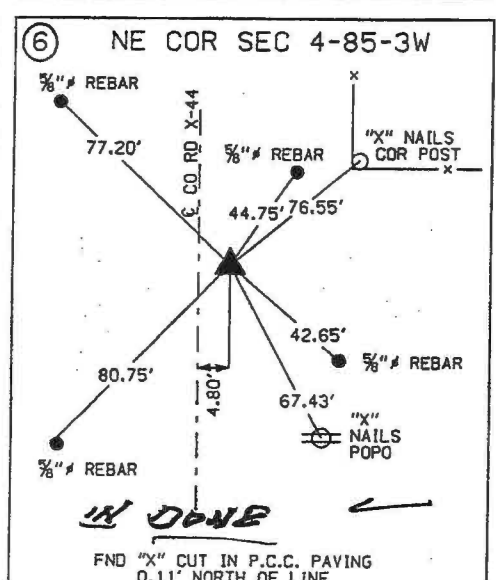
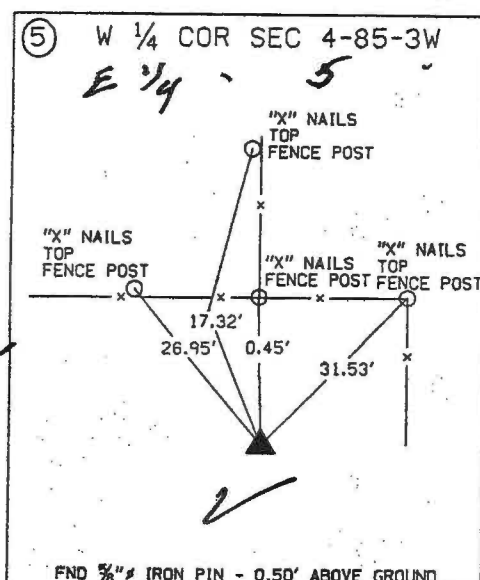
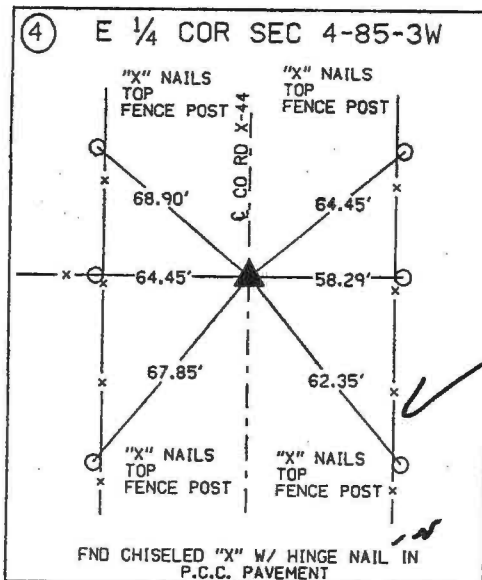
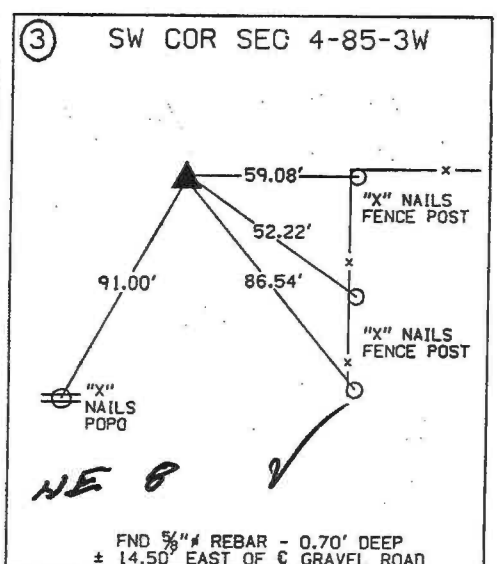
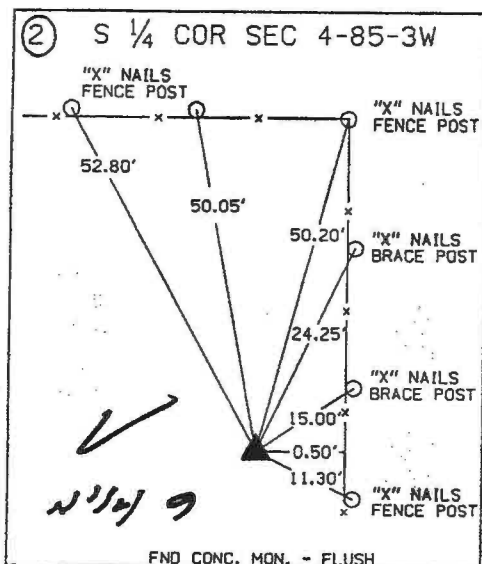
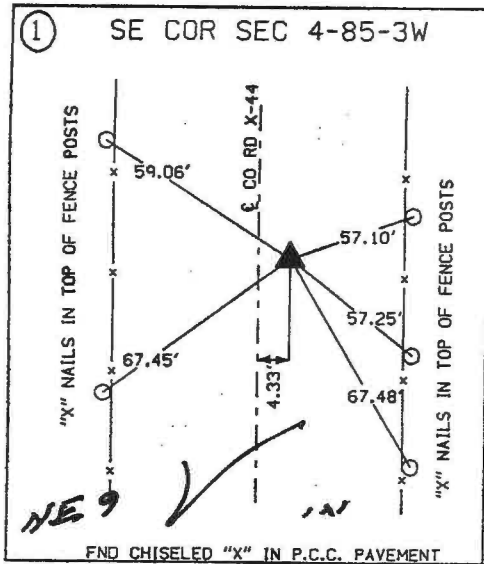
EARTH TECH

	[I hereby certify that this Land Surveying document was prepared by me or under my direct personal supervision and that I am a duly Licensed Land Surveyor under the laws of the State of Iowa.]	
	<i>Michael R. Fagle</i>	1-21-99
	MICHAEL R. FAGLE	Date
	License number 8505	
	My license renewal date is December 31, 2000	
Pages or sheets covered by this seal:		
<u>Two (2)</u>		

METRIC

UNITED STATES PUBLIC SECTION CORNER CERTIFICATION AND LAND CORNER SURVEY

SECTION 4 T-85N R-3W



ALL TIES ARE ENGLISH UNLESS OTHERWISE NOTED