

Instrument #: 2015-3125
 10/30/2015 10:21:15 AM Total Pages: 1
 ZSC SECTION CORNER CERTIFICATE
 Recording Fee: \$7.00 Transfer Tax: \$0
 Sheri L. Jones, Recorder, Jones County Iowa



Prepared by/Return to: FEHR GRAHAM, 1919 210th Street, Manchester IA 52057 - Ph: (563)927-2060

UNITED STATES PUBLIC LAND SURVEY CORNER CERTIFICATE

OF

Land Survey Monuments situated in Section 4, Township 85 North, Range 3 West of the Fifth Principal Meridian, Jones County, Iowa.

Previously recorded in (1) I.D.O.T. Ties (2) I.D.O.T. Ties in County Recorder's Office.
 (book, page, document number, etc.)

(Show reason for preparing this certificate, the evidence and detailed procedures used in establishing the corner positions and monumentation found or placed.)

Monument Description and Remarks: (1) E1/4 Corner of Section 4-T85N-R3W:

Section corner information was obtained before and set after concrete overlay project. Found 1/2"Ø rebar w/QPC #11310 before P.C.C. overlay. Set mag nail in cut "x" in P.C.C. pavement and one new tie.

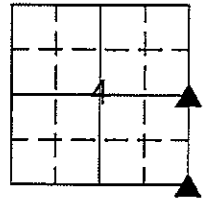
(2) SE Corner of Section 4-T85N-R3W:

Section corner information was obtained before and set after concrete overlay project. Found chiseled "x" in P.C.C. pavement before P.C.C. overlay. Set mag nail in cut "x" in P.C.C. pavement and one new tie.

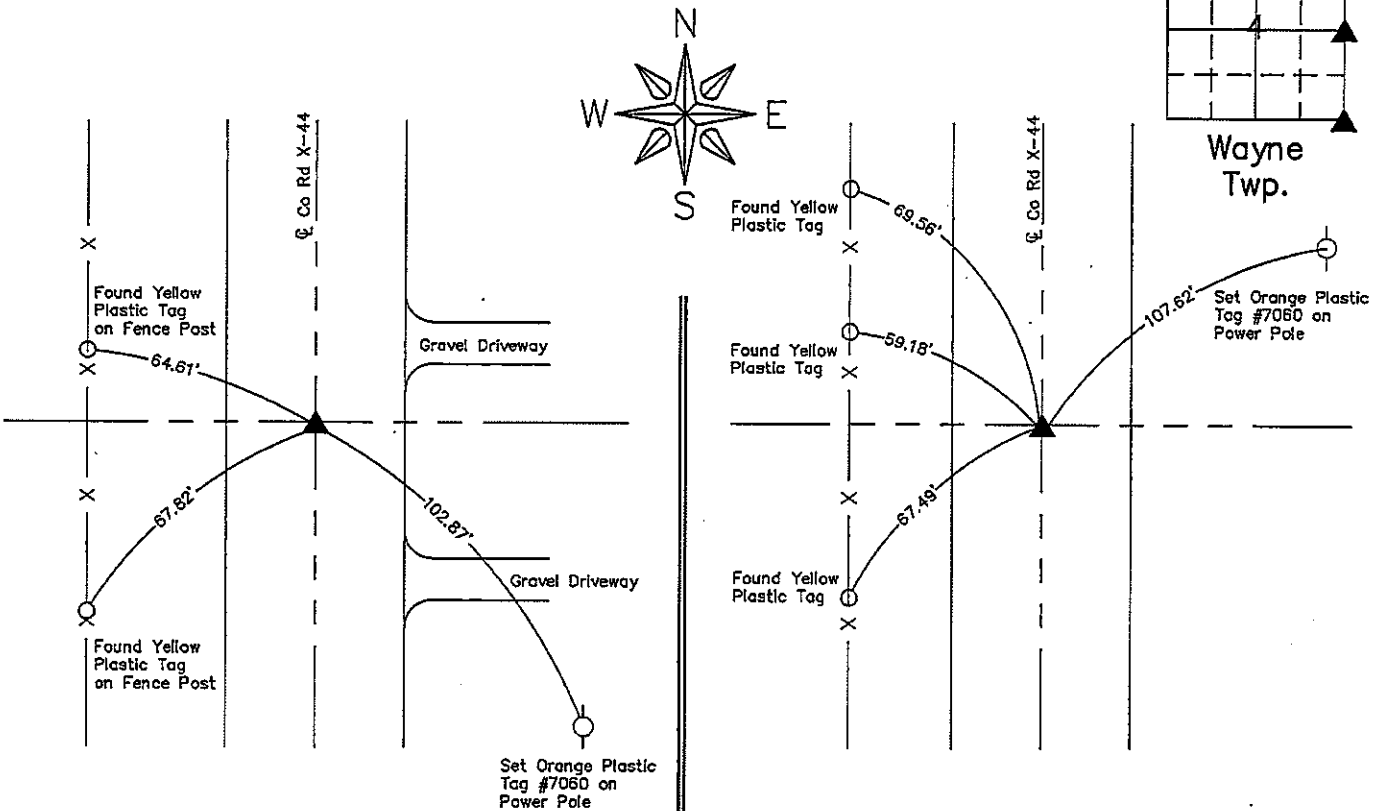
PLAN VIEW

Project Number 15-321

Show a minimum of three reference ties to durable physical objects, relevant monuments and physical conditions that will enable recovery of the corner.

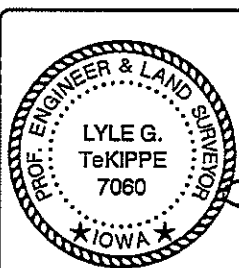


Wayne Twp.



(1) E1/4 Corner of Sec. 4-T85N-R3W
 Set Mag Nail in Cut "X" in P.C.C. Pavement

(2) SE Corner of Sec. 4-T85N-R3W
 Set Mag Nail in Cut "X" in P.C.C. Pavement



I hereby certify that this land surveying document was prepared and the related survey work was performed by me or under my direct personal supervision and that I am a duly licensed Land Surveyor under the laws of the State of Iowa.

Lyle G. TeKippe 10-28-15
 Lyle G. TeKippe, P.E. & P.L.S. Date
 License Number: 7060
 My license renewal date is December 31, 2016.
 Sheets covered by this seal: This Sheet Only

| List Corners to be Indexed | | | |
|----------------------------|---------|------|-------|
| Corners | Section | Twp. | Range |
| E1/4 | 4 | 85N | 3W |
| SE | 4 | 85N | 3W |

G:\C3D\15\15-321\15-321-LEGAL.dwg

COPY

Jones County Iowa
 Marie Krutzfield, Recorder
 Fee Book 2010 3409

12/09/2010 @1157AM
 ZSC SEC COR CERT
 Book: Page: # Pages: 1
 Total Fees: \$0.00

PREPARED BY
 CLARENCE J. WALTON, JONES COUNTY ENGINEER'S OFFICE, 19501 HWY. 64, ANAMOSA, IOWA, 52205 (319) 462-3785

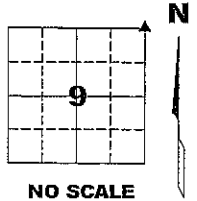
UNITED STATES PUBLIC LAND SURVEY CORNER CERTIFICATE

LAND SURVEY MONUMENTS SITUATED IN SECTION 9, TOWNSHIP 85 NORTH,
 RANGE 3 WEST OF THE 5TH PRINCIPAL MERIDIAN, JONES COUNTY, IOWA.

PROJECT: M-1311

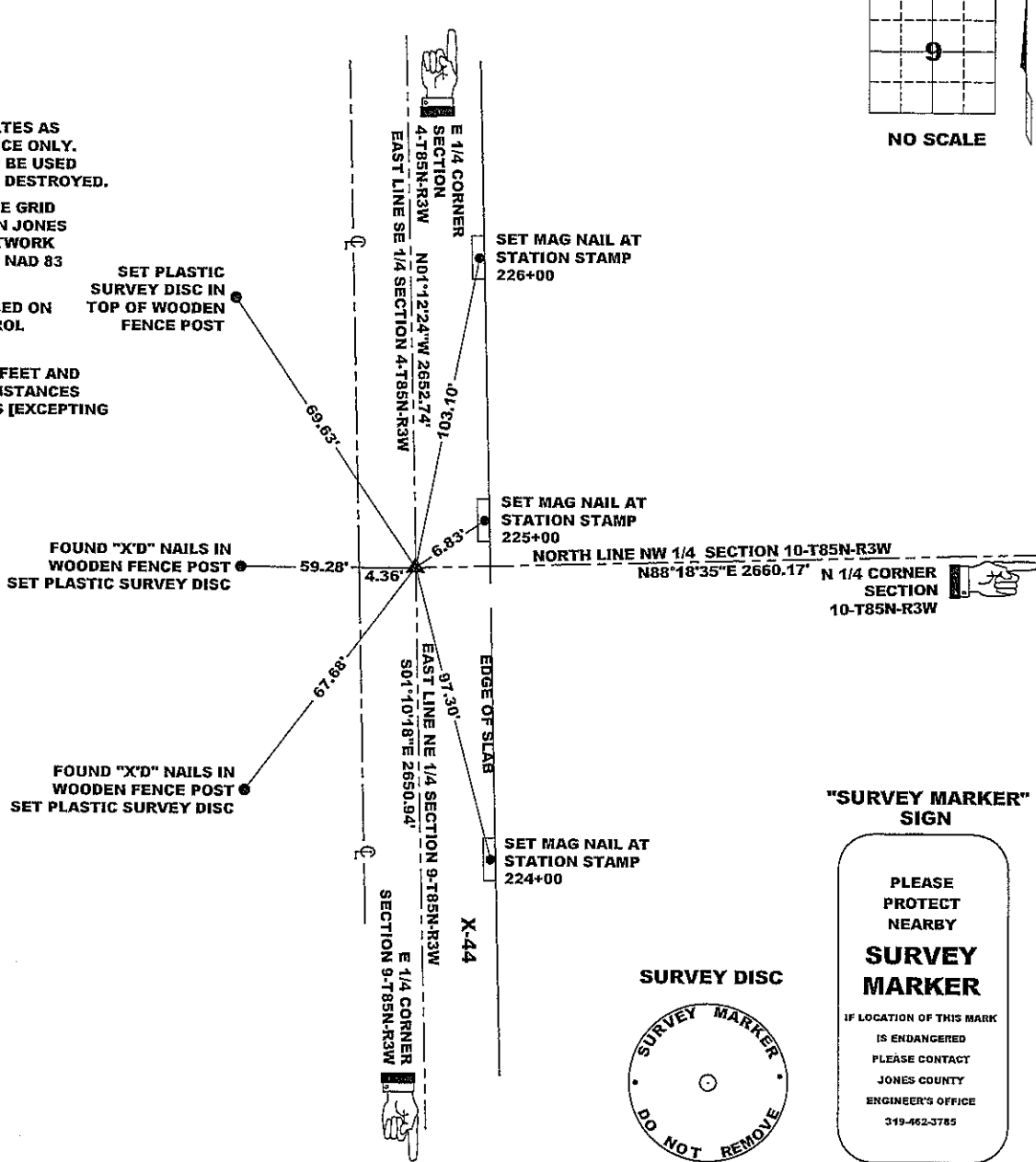
CORNER SECTION TOWNSHIP RANGE
 NE CORNER 9 T85N R3W

STATE PLANE COORDINATE
 NAD 83 IOWA NORTH
 N 3542316.83
 E 5547229.36



NOTES:

- 1) THE STATE PLANE COORDINATES AS SHOWN ARE FOR CONVENIENCE ONLY. THE TIES AS SHOWN SHOULD BE USED TO REPLACE THE CORNER, IF DESTROYED.
- 2) COORDINATES AS SHOWN ARE GRID COORDINATES AND BASED ON JONES COUNTY G.P.S. CONTROL NETWORK WHICH IN TURN IS BASED ON NAD 83 IOWA NORTH DATUM.
- 3) BASIS OF BEARINGS ARE BASED ON JONES COUNTY G.P.S. CONTROL NETWORK.
- 4) ALL MEASUREMENTS ARE IN FEET AND DECIMALS THEREOF. LONG DISTANCES SHOWN ARE GRID DISTANCES [EXCEPTING RECORDED () DISTANCES].

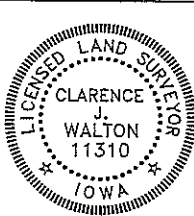


OPC ORANGE PLASTIC CAP
 () RECORDED AS

PREVIOUSLY RECORDED IN RECORDER'S DOCUMENT 1999 0327

MONUMENT DESCRIPTION AND HOW ESTABLISHED FOUND "X" CUT IN CONCRETE SLAB 4.36' EAST OF CENTERLINE JOINT. REPLACED BY DRILLING HOLE IN SLAB AND SETTING 5/8"X24" REBAR WITH ORANGE PLASTIC CAP #11310 COUNTER SUNK SLIGHTLY BELOW PAVEMENT SURFACE.

FIELD BOOK MISC. 2009-2010, PAGE 151. DATE OF SURVEY: 11/9/10



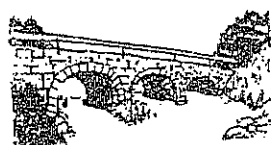
I hereby certify that this land surveying document and the related survey work was performed by me or under my direct personal supervision and that I am a duly registered Land Surveyor under the laws of the State of Iowa.
 Signed: *Clarence J. Walton* 12/9/10
 Clarence J. Walton, L.S.
 My Registration Renewal Date is December 31, 2011
 Iowa License Number 11310
 Pages or sheets covered by this seal: 1 of 1.

- A. THERE IS NO CERTIFICATE FOR THE CORNER ON FILE WITH THE RECORDER OF THE COUNTY IN WHICH THE CORNER IS LOCATED.
- B. THE CORNER MONUMENT HAS BEEN REPLACED OR MODIFIED.
- C. THE SURVEYOR IN RESPONSIBLE CHARGE OF THE LAND SURVEYING ACCEPTS A CORNER POSITION THAT DIFFERS FROM THAT SHOWN IN THE PUBLIC RECORDS OF THE COUNTY IN WHICH THE CORNER IS LOCATED.
- D. THE REFERENCE TIES REFERRED TO IN AN EXISTING PUBLIC RECORD NO LONGER EXIST.

CORNERS TO BE INDEXED

| CORNER | SECTION | TOWNSHIP | RANGE |
|-----------|---------|----------|-------|
| NE CORNER | 9 | 85N | 3W |
| SE CORNER | 4 | 85N | 3W |
| SW CORNER | 3 | 85N | 3W |
| NW CORNER | 10 | 85N | 3W |

JONES COUNTY ENGINEER'S OFFICE



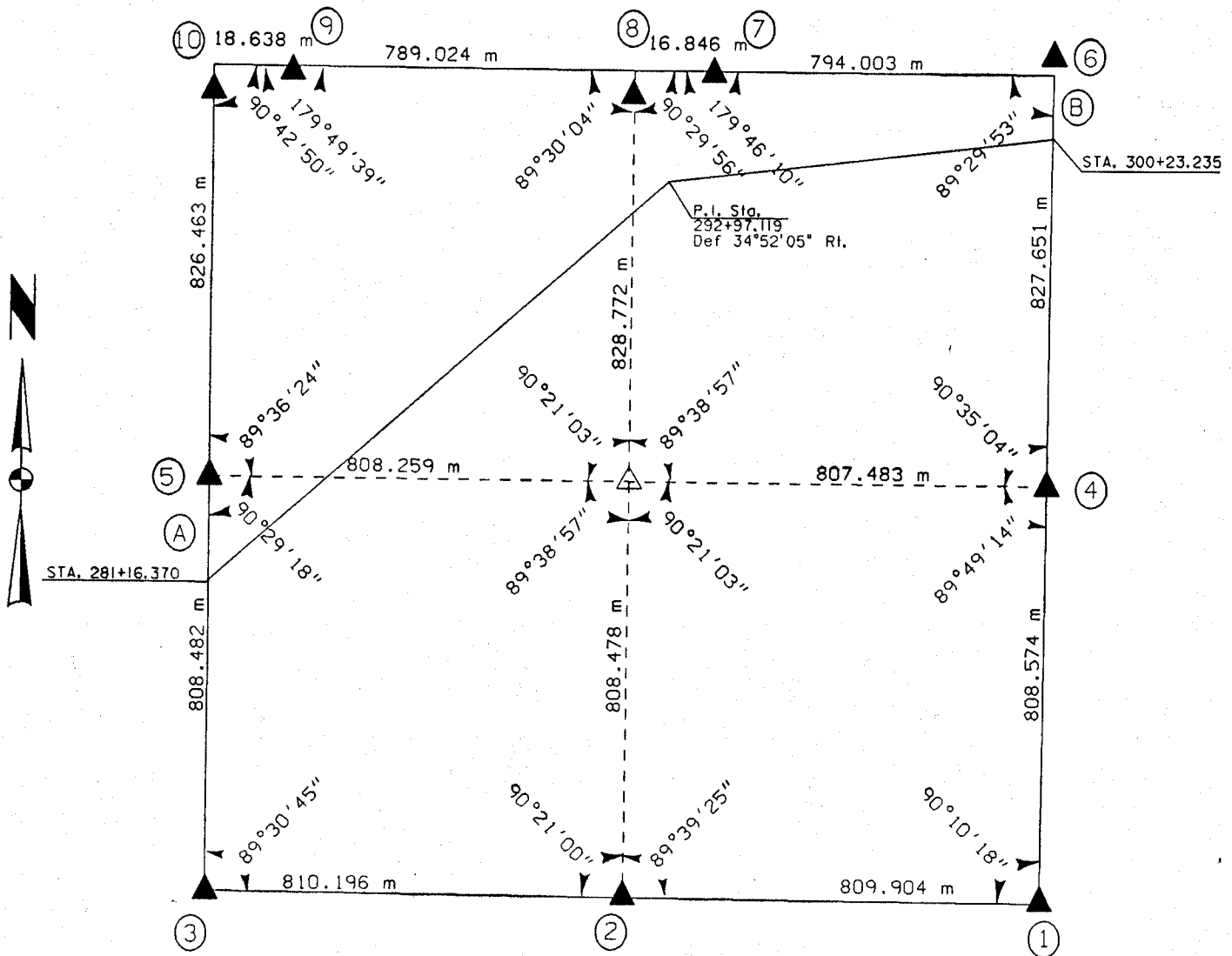
19501 HWY. 64, ANAMOSA, IOWA 52205
 (319) 462-3785

UNITED STATES PUBLIC SECTION CORNER CERTIFICATION
AND LAND CORNER SURVEY
SECTION 4 T-85N R-3W

MADE FOR
IOWA DEPARTMENT OF TRANSPORTATION FOR THE PURPOSE OF
RIGHT OF WAY DESCRIPTIONS ON PRIMARY ROAD No. U.S. 151

MADE BY
MICHAEL R. FAGLE R.L.S. No. 8505
JONES COUNTY, IOWA NHS-151-3(84)--19-57
APRIL 1998 THRU OCTOBER 1998

ALL DISTANCES WERE CAREFULLY MEASURED AND MAY NOT AGREE WITH ROAD SURVEY STATIONING



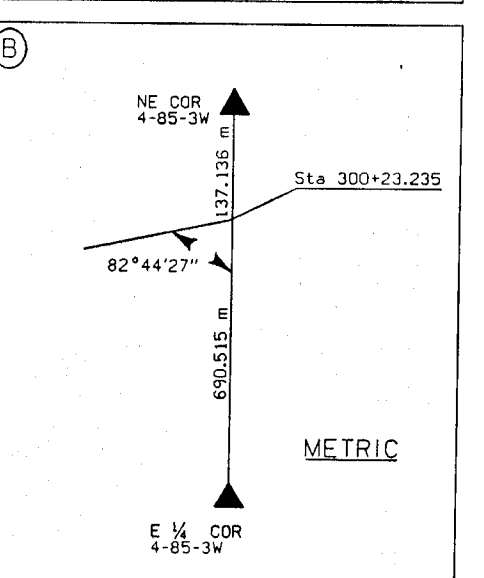
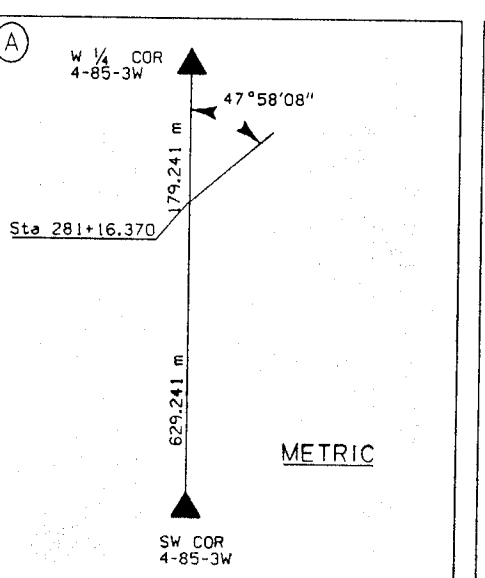
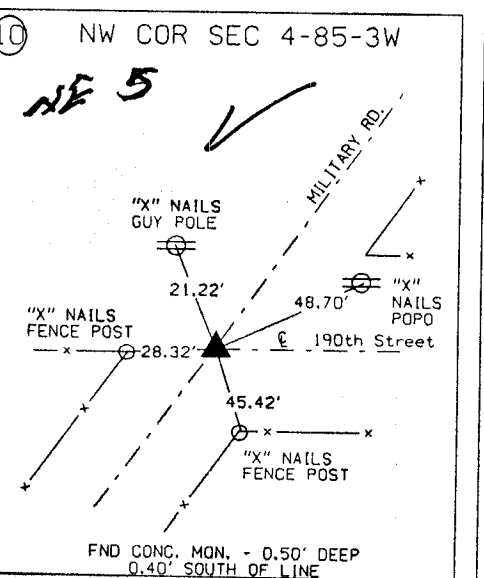
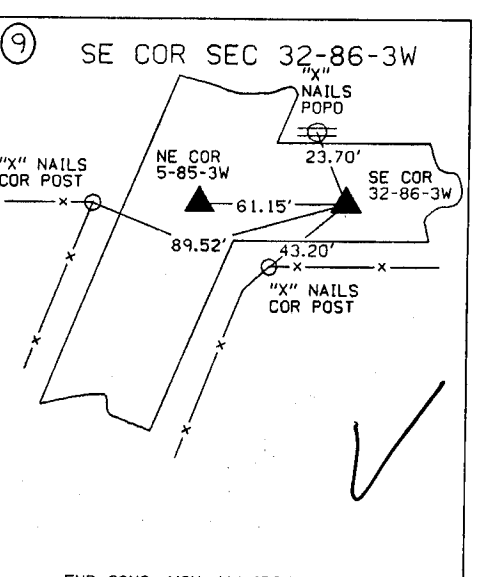
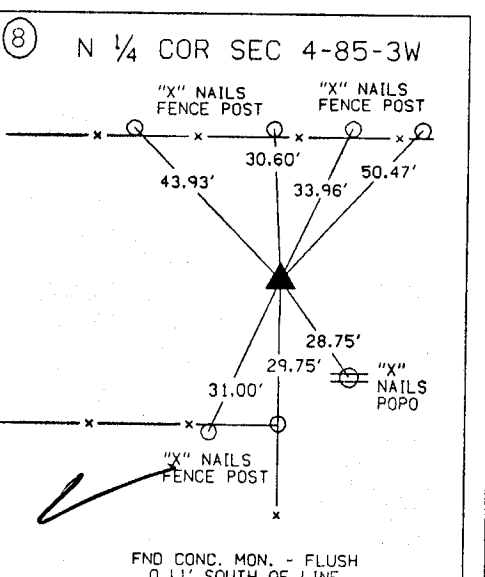
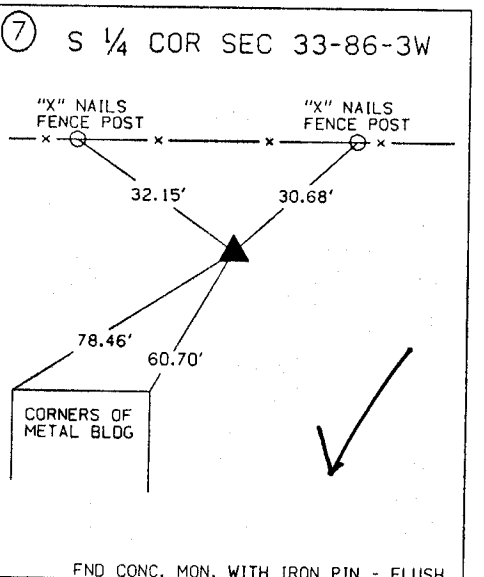
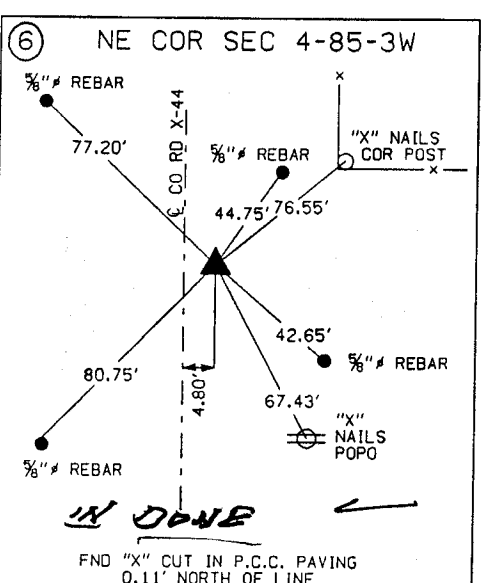
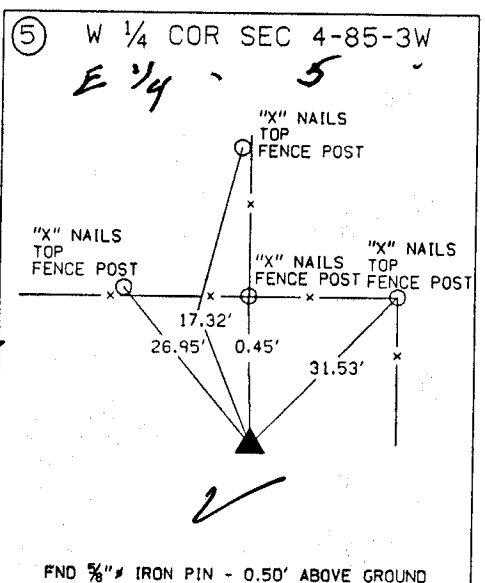
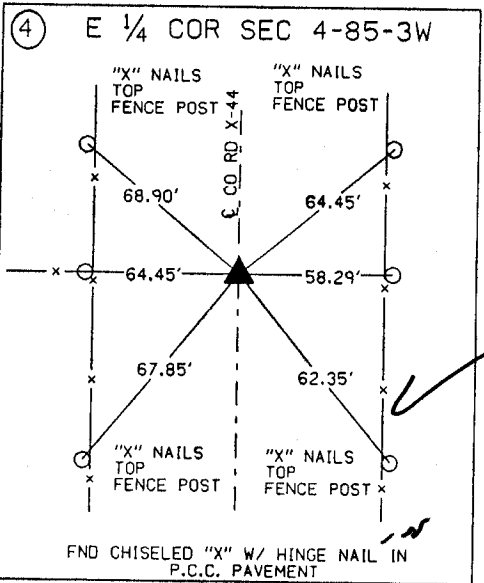
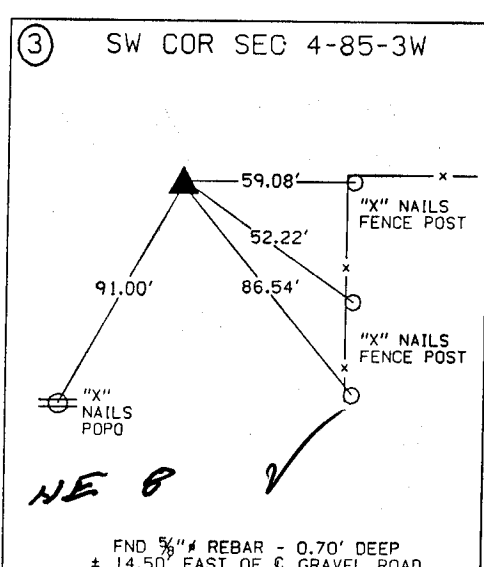
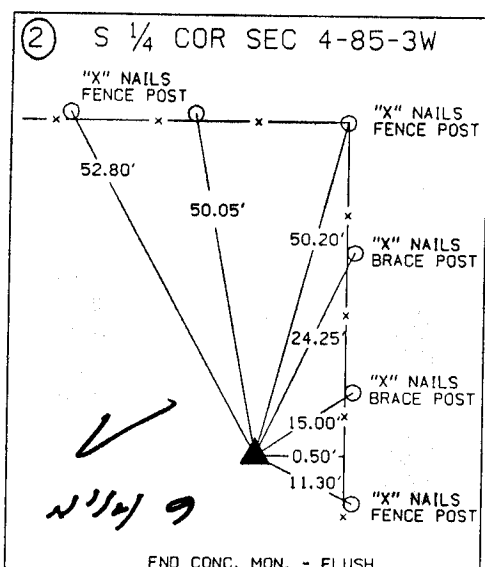
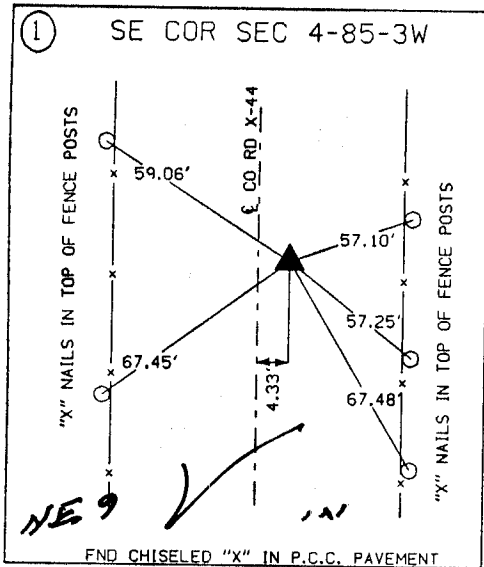
EARTH TECH

| | |
|--|--|
| | I hereby certify that this Land Surveying document was prepared by me or under my direct personal supervision and that I am a duly Licensed Land Surveyor under the laws of the State of Iowa. |
| | Michael R. Fagle 1-21-99 MICHAEL R. FAGLE Date |
| | LICENSE number 8505 |
| | My license renewal date is December 31, 2000 |
| | Pages or sheets covered by this seal: Two (2) |

METRIC

UNITED STATES PUBLIC SECTION CORNER CERTIFICATION
AND LAND CORNER SURVEY

SECTION 4 T-85N R-3W



ALL TIES ARE ENGLISH UNLESS OTHERWISE NOTED