

# THIS IS NOT A CERTIFICATION

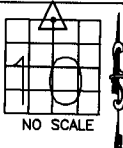
JONES COUNTY ENGINEER'S OFFICE, 19501 HWY. 64, ANAMOSA, IOWA, 52205 (319)462-3785

## UNITED STATES PUBLIC LAND SURVEY CORNER CERTIFICATE

LAND SURVEY MONUMENTS SITUATED IN SECTION 10, TOWNSHIP 84  
NORTH, RANGE 1 WEST OF THE 5TH P.M., JONES COUNTY, IOWA

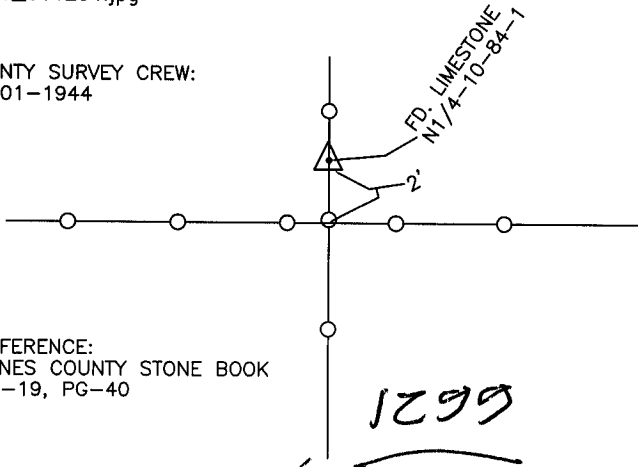
### CORNERS TO BE INDEXED

CORNER	SECTION	TOWNSHIP	RANGE
N-QUARTER	10	84N	1W
OFFICE FILE NO.			



84110c\_011204.jpg

COUNTY SURVEY CREW:  
05-01-1944

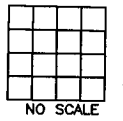


REFERENCE:  
JONES COUNTY STONE BOOK  
BK-19, PG-40

PREVIOUSLY RECORDED IN BOOK \_\_\_\_\_, PAGE \_\_\_\_\_  
MONUMENT DESCRIPTION AND HOW ESTABLISHED FOUND  
LIMESTONE 12" BELOW SURFACE, 2' NORTH OF FENCE CORNER UNDER  
NORTH-SOUTH FENCE. NORTH QUARTER CORNER SECTION 10,  
TOWNSHIP 84 NORTH, RANGE 1 WEST OF THE 5TH PRINCIPAL,  
JONES COUNTY, IOWA. TIES AS INDICATED.

### CORNERS TO BE INDEXED

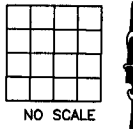
CORNER	SECTION	TOWNSHIP	RANGE
OFFICE FILE NO.			



PREVIOUSLY RECORDED IN BOOK \_\_\_\_\_, PAGE \_\_\_\_\_  
MONUMENT DESCRIPTION AND HOW ESTABLISHED \_\_\_\_\_  
\_\_\_\_\_  
\_\_\_\_\_

### CORNERS TO BE INDEXED

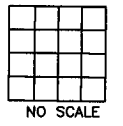
CORNER	SECTION	TOWNSHIP	RANGE
OFFICE FILE NO.			



PREVIOUSLY RECORDED IN BOOK \_\_\_\_\_, PAGE \_\_\_\_\_  
MONUMENT DESCRIPTION AND HOW ESTABLISHED \_\_\_\_\_  
\_\_\_\_\_  
\_\_\_\_\_

### CORNERS TO BE INDEXED

CORNER	SECTION	TOWNSHIP	RANGE
OFFICE FILE NO.			



PREVIOUSLY RECORDED IN BOOK \_\_\_\_\_, PAGE \_\_\_\_\_  
MONUMENT DESCRIPTION AND HOW ESTABLISHED \_\_\_\_\_  
\_\_\_\_\_  
\_\_\_\_\_

~~I hereby declare that this plat, survey or report was made by me or under my direct personal supervision and that I am a duly registered Land Surveyor under the laws of the State of Iowa.~~

Signed: \_\_\_\_\_

SEAL

JONES COUNTY  
ENGINEER'S OFFICE

19501 HWY. 64,  
ANAMOSA, IOWA,  
52205 (319)462-3785