

UNITED STATES PUBLIC LAND SURVEY CORNER CERTIFICATE

SLSI 9-90

OF

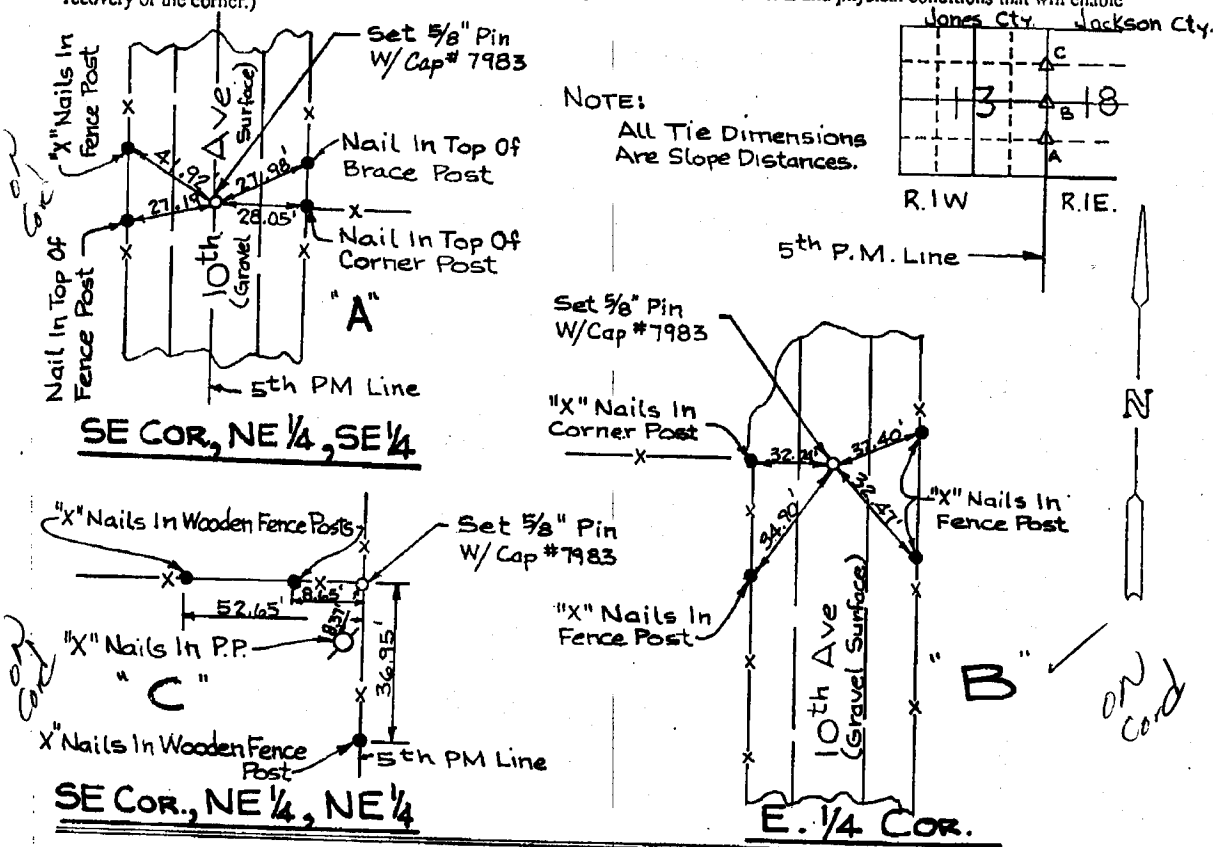
Land Survey Monuments situated in Section 13, Township 84 N., Range 1 W., of the Fifth Principal Meridian, JONES County, Iowa. Previously recorded in _____ in County Recorder's Office.

(Show reason for preparing this certificate, the evidence and detailed procedures used in establishing the corner positions and monumentation found or placed.)

Monument Description and Remarks We Set the SE Cor., NE 1/4, SE 1/4 By Splitting the Easement Fences and Intersecting this line with a Fence line coming from the East. The E. 1/4 Cor. was set by Splitting the Easement Fences and Intersecting this line with a Fence line coming from the West. Intersecting Fence Lines and a good corner Post gave us the location for the SE Cor., NE 1/4, NE 1/4.

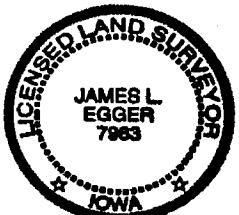
PLAN - VIEW

(Show a minimum of three reference ties to durable physical objects, relevant monuments and physical conditions that will enable recovery of the corner.)



I hereby certify that the survey work was completed and this certificate was prepared by me or under my direct personal supervision and that I am a duly registered land surveyor under the laws of the state of Iowa.

Signature: James L. Egger
 Name typed or printed: JAMES L. EGGER P.E. & L.S.
 Date: AUG. 3, 1998 Reg. No. 7983



Corners	List Corners to be Indexed		
	Section	Twp	Range
SE, NE 1/4, NE 1/4	13	84 N.	1 W.
E 1/4	13	84 N.	1 W.
SE, NE 1/4, SE 1/4	13	84 N.	1 W.

98 99 0473

FILED
 RECORDERS OFFICE
 JONES COUNTY IOWA
 98 AUG -6 AM 11:46
 LINDA J. BENDIXEN
 RECORDER 6.00

SEAL