

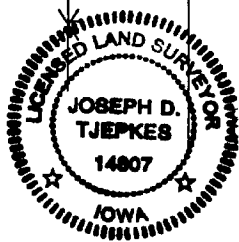
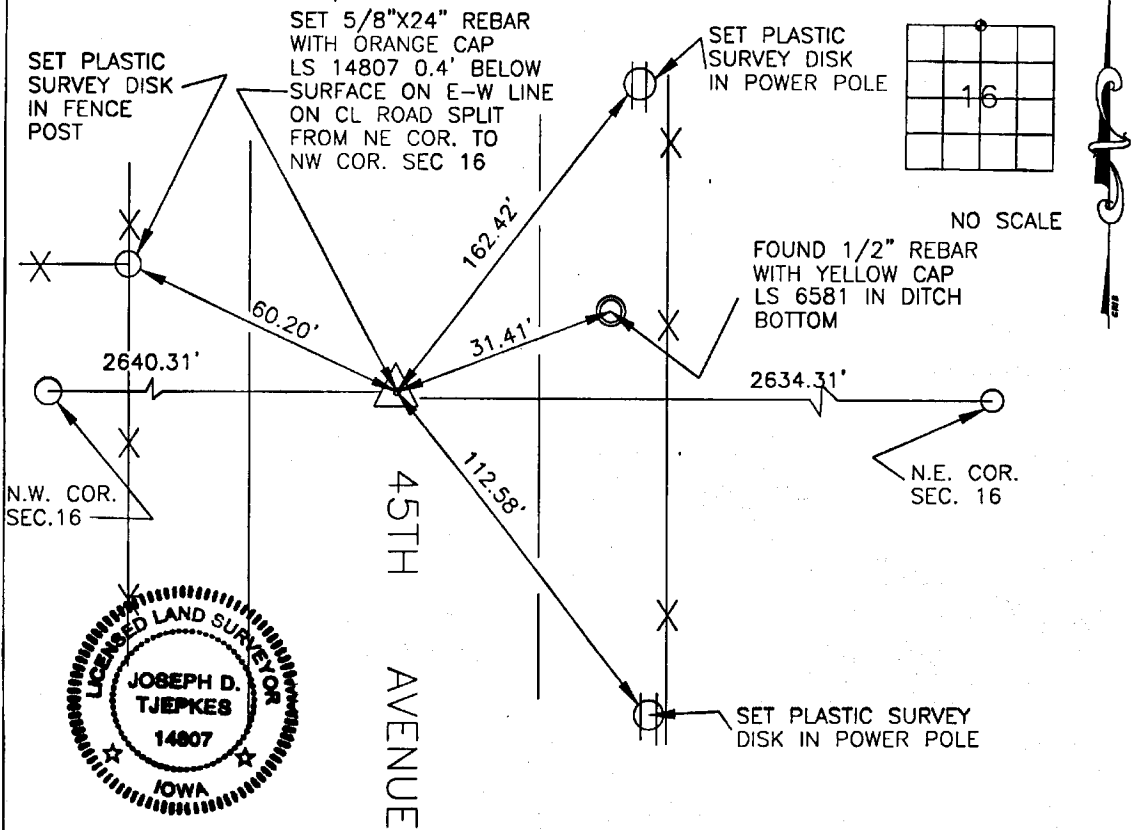
2000 2468

FILED
RECORDERS OFFICE
JONES COUNTY IOWA

PREPARED BY J.D. TJEPKES 20 AUG -8 PM 3:18 NO FEG
JONES COUNTY ENGINEER, 19501 HWY 64 ANAMOSA, IOWA
RECORDER

UNITED STATES PUBLIC LAND SURVEY CORNER CERTIFICATE

LAND SURVEY MONUMENTS SITUATED IN SECTION 16, TOWNSHIP 84
NORTH, RANGE 1 WEST OF THE 5TH P.M., JONES COUNTY, IOWA



Wyoming

PREVIOUSLY RECORDED IN BOOK N/A, PAGE N/A
 MONUMENT DESCRIPTION AND HOW ESTABLISHED _____
SET 5/8"X24" REBAR WITH ORANGE CAP LS 14807 ON ROAD SPLIT 0.4' BELOW ROAD
SURFACE ON LINE WITH THE NORTHWEST CORNER OF SECTION 16 AND THE NORTHEAST
CORNER OF SECTION 16. NOTE DISTANCE TIES TO SECTION CORNERS. NO TIES RECORDED
ON FOUND PIN AND CAP.

I hereby declare that this plat, survey or report was made by me or under my direct personal supervision and that I am a duly registered Land Surveyor under the laws of the State of Iowa.

Signed: *[Signature]*
Joseph D. Tjepkes L.S. Iowa Reg. No. 14807
My Registration Renewal Date is December 31, 2000

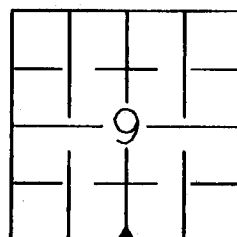
| CORNERS TO BE INDEXED | | | |
|-----------------------|---------|----------|-------|
| CORNER | SECTION | TOWNSHIP | RANGE |
| N-1/4 | 16 | 84-N | 1-W |

JONES COUNTY ENGINEER
19501 HWY. 64,
ANAMOSA, IOWA

Wyoming

United States Public Land Survey Corner Certificate

Land survey corner in Section 9 Township 84 North.
Range L West of the 5th Principal Meridian. Jones
County, Iowa

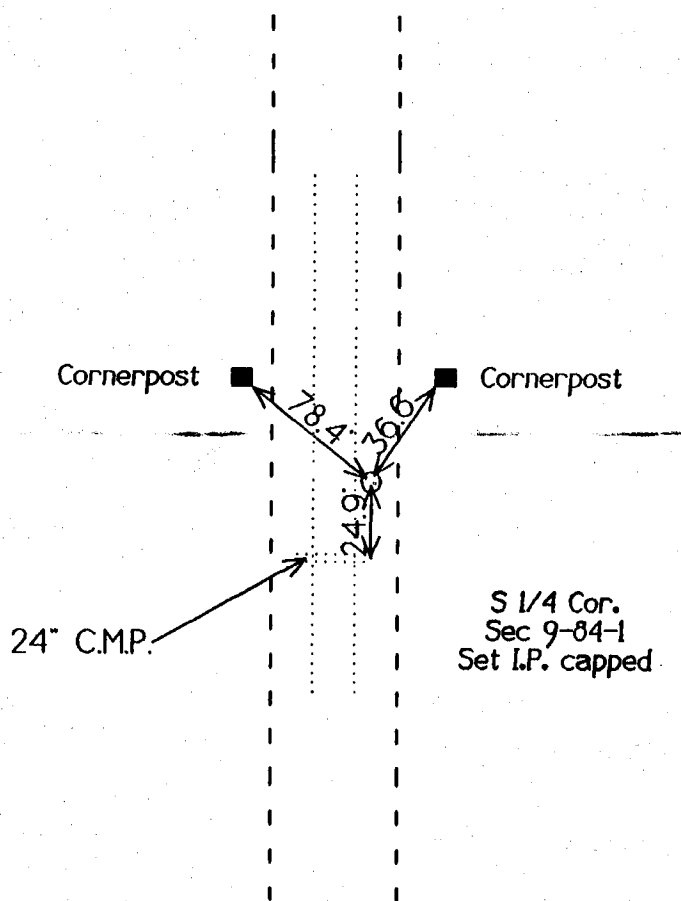


SECTION

N¹/₄

16

ON
Cord
5-24-96



Certification

I hereby certify that this plot and survey was made by me or under my direct supervision and that I am a duly Registered Land Surveyor under the laws of the State of Iowa.

Harold E. Dillon 4/12/86
Harold E. Dillon Reg.#6581 date
My certification expires 12/31/96

