

COPY

FEEBOOK: 2007 0085
REC FEES: NO FEE
PAGES: 1 1/9/2007 10:07 AM
Marie Krutzfield, Recorder
Jones County, Iowa

J.D. TJEPKES, LS. JONES COUNTY ENGINEER'S OFFICE, 19501 HWY. 64, ANAMOSA, IOWA, 52205 (319)462-3785

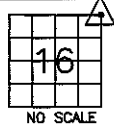
UNITED STATES PUBLIC LAND SURVEY CORNER CERTIFICATE

LAND SURVEY MONUMENTS SITUATED IN SECTION 16, TOWNSHIP 84
NORTH, RANGE 1 WEST OF THE 5TH P.M., JONES COUNTY, IOWA

CORNERS TO BE INDEXED

CORNER SECTION TOWNSHIP RANGE
NE 16 84N 1W

OFFICE FILE NO.
84116e_010307.tif



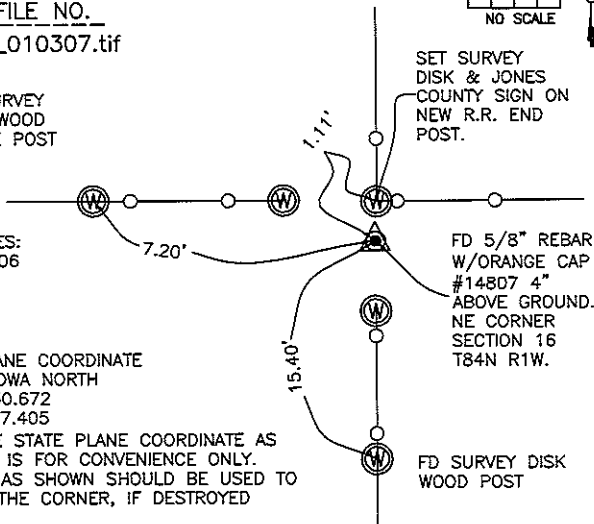
FD SURVEY
DISK WOOD
BRACE POST

SET SURVEY
DISK & JONES
COUNTY SIGN ON
NEW R.R. END
POST.

FIELD NOTES:
12-05-2006
BK 2006
P 76

STATE PLANE COORDINATE
NAD 83 IOWA NORTH
N 3506930.672
E 5611507.405

NOTE: THE STATE PLANE COORDINATE AS
INDICATED IS FOR CONVENIENCE ONLY.
THE TIES AS SHOWN SHOULD BE USED TO
REPLACE THE CORNER, IF DESTROYED



FD 5/8" REBAR
W/ORANGE CAP
#14807 4"
ABOVE GROUND.
NE CORNER
SECTION 16
T84N R1W.

FD SURVEY DISK
WOOD POST

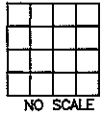
PREVIOUSLY RECORDED IN BOOK 2000, PAGE 2466
MONUMENT DESCRIPTION AND HOW ESTABLISHED _____

PER TIES ON RECORD AT JONES COUNTY RECORDER'S OFFICE DOCUMENT
#2000-2466, FOUND 5/8" REBAR WITH ORANGE CAP #14807 4" ABOVE
PRESENT GROUND. NEW TIES AS INDICATED. NORTHEAST CORNER SECTION 16
T84N R1W.

CORNERS TO BE INDEXED

CORNER SECTION TOWNSHIP RANGE

OFFICE FILE NO. _____



PREVIOUSLY RECORDED IN BOOK _____, PAGE _____
MONUMENT DESCRIPTION AND HOW ESTABLISHED _____

CORNERS TO BE INDEXED

CORNER SECTION TOWNSHIP RANGE

OFFICE FILE NO. _____

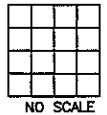


PREVIOUSLY RECORDED IN BOOK _____, PAGE _____
MONUMENT DESCRIPTION AND HOW ESTABLISHED _____

CORNERS TO BE INDEXED

CORNER SECTION TOWNSHIP RANGE

OFFICE FILE NO. _____



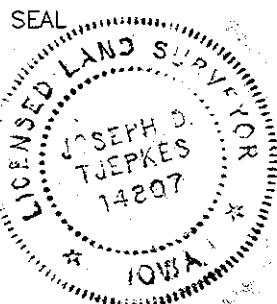
PREVIOUSLY RECORDED IN BOOK _____, PAGE _____
MONUMENT DESCRIPTION AND HOW ESTABLISHED _____

I hereby declare that this plat, survey or report
was made by me or under my direct personal
supervision and that I am a duly registered Land
Surveyor under the laws of the State of Iowa.

Signed: _____

Joseph D. Tjepkes 1-9-07

Joseph D. Tjepkes L.S. Iowa Reg. No. 14807
My Registration Renewal Date is December 31, 2008



J.D. TJEPKES LS 14807
JONES COUNTY
ENGINEER'S OFFICE

19501 HWY. 64,
ANAMOSA, IOWA,
52205 (319)462-3785

2000 2466

FILED
RECORDERS OFFICE
JONES COUNTY IOWA

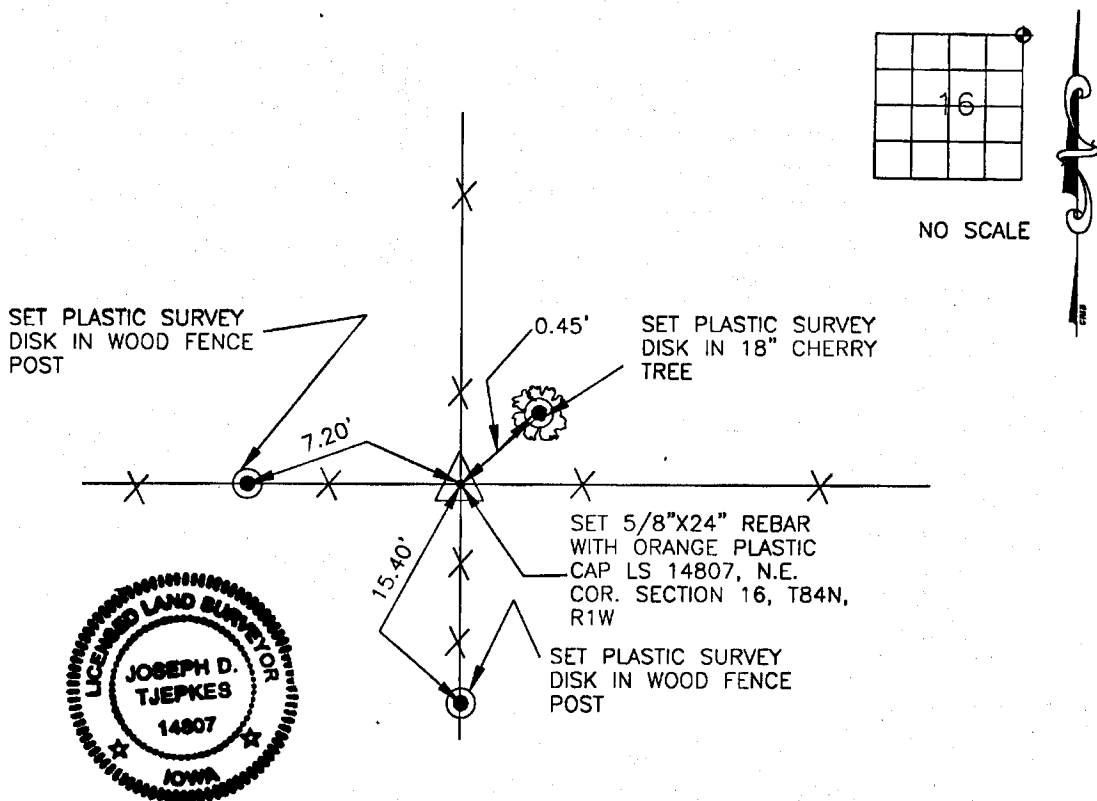
00 AUG -8 PM 3:16

PREPARED BY:

JONES COUNTY ENGINEER, *MARIE KRUTZFIELD* NO FEE
RECORDED BY: *J.D. TJEPKES L.S.* 64, ANAMOSA, IOWA

UNITED STATES PUBLIC LAND SURVEY CORNER CERTIFICATE

LAND SURVEY MONUMENTS SITUATED IN SECTION 16, TOWNSHIP 84
NORTH, RANGE 1 WEST OF THE 5TH P.M., JONES COUNTY, IOWA



Wyoming

PREVIOUSLY RECORDED IN BOOK N/A, PAGE N/A

MONUMENT DESCRIPTION AND HOW ESTABLISHED _____

SET 5/8"X24" REBAR WITH ORANGE CAP LS 14807 AT THE INTERSECTION OF FENCE _____

LINES NORTH, EAST, SOUTH & WEST. EVIDENCE OF OLD WIRE AND POSTS FOUND. GOOD _____

DISTANCE TO FOUND MONUMENT AT THE NORTHWEST COR. OF SECTION 16. THE _____

PROPORTIONATE DISTANCE TO THE NORTH 1/4 COR. OF SECTION 16 FIT THE CENTERLINE _____

OF 45TH AVENUE WITHIN 3'.

I hereby declare that this plat, survey or report was made by me or under my direct personal supervision and that I am a duly registered Land Surveyor under the laws of the State of Iowa.

Signed:

Joseph D. Tjepkes 7-27-2020

Joseph D. Tjepkes L.S. Iowa Reg. No. 14807
My Registration Renewal Date is December 31, 2000

CORNERS TO BE INDEXED

| CORNER | SECTION | TOWNSHIP | RANGE |
|---------|---------|----------|--------|
| N.E. 16 | 16 | 84-NORTH | 1-WEST |

JONES COUNTY ENGINEER
19501 HWY. 64,
ANAMOSA, IOWA