

2000 2465

FILED  
RECORDERS OFFICE  
JONES COUNTY IOWA

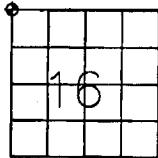
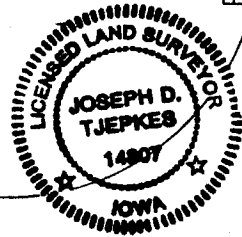
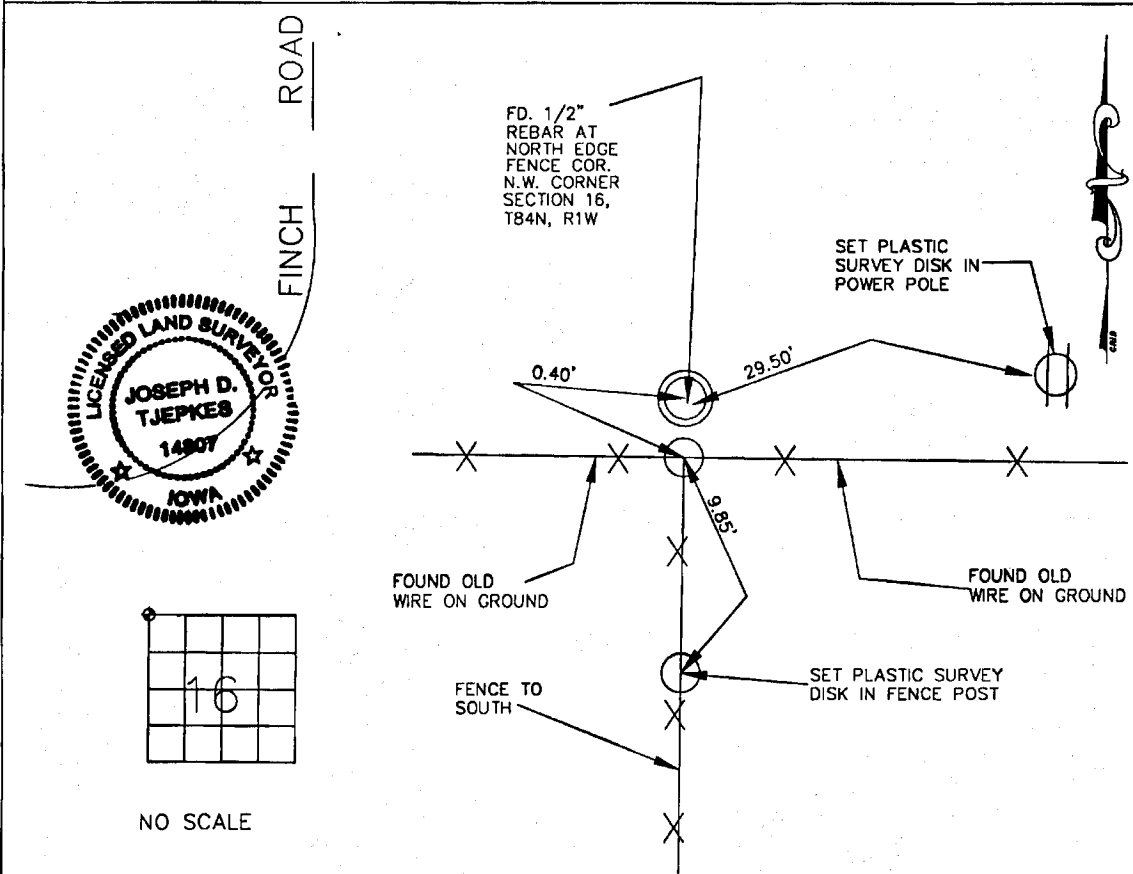
00 AUG -8 PM 3:15 NO FEE

JONES COUNTY ENGINEER, 19501 HWY 64, ANAMOSA, IOWA

PREPARED BY JOSEPH D. TIEPKES  
RECORDED

# UNITED STATES PUBLIC LAND SURVEY CORNER CERTIFICATE

LAND SURVEY MONUMENTS SITUATED IN SECTION 16, TOWNSHIP 84  
NORTH, RANGE 1 WEST OF THE 5TH P.M., JONES COUNTY, IOWA



NO SCALE

*Wyoming*

PREVIOUSLY RECORDED IN BOOK N/A, PAGE N/A  
MONUMENT DESCRIPTION AND HOW ESTABLISHED \_\_\_\_\_

FOUND 1/2" REBAR AT THE NORTH EDGE OF FENCE POST. FENCE IN GOOD REPAIR RUNNING SOUTH.

FOUND EVIDENCE OF OLD BARBED WIRE RUNNING EAST AND WEST. EXCEPTED THE REBAR AS THE  
NORTHWEST CORNER OF SECTION 16, TOWNSHIP 84 NORTH, RANGE 1 WEST, 5TH P.M., JONES COUNTY,  
IOWA.

I hereby declare that this plat, survey or report was made by me or under my direct personal supervision and that I am a duly registered Land Surveyor under the laws of the State of Iowa.

Signed: *Joseph D. Tiepkes* 7-27-2000

Joseph D. Tiepkes L.S. Iowa Reg. No. 14807  
My Registration Renewal Date is December 31, 2000

### CORNERS TO BE INDEXED

CORNER	SECTION	TOWNSHIP	RANGE
NORTHWEST	16	84 NORTH	1 WEST

JONES COUNTY ENGINEER  
19501 HWY. 64,  
ANAMOSA, IOWA