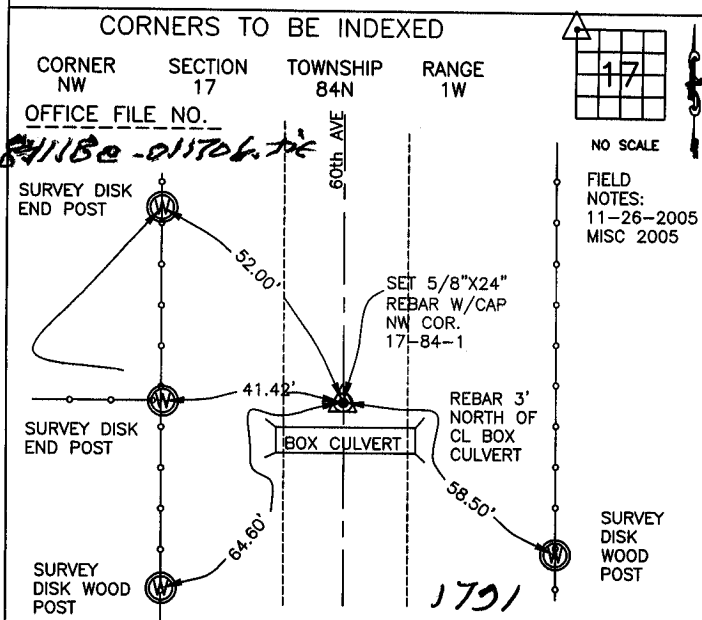


2006 0246
 FILED
 RECORDERS OFFICE
 JONES COUNTY IOWA
 06 JAN 19 AM 9:02
 MARIE KRUTZFIELD
 RECORDER 7.00 Pd

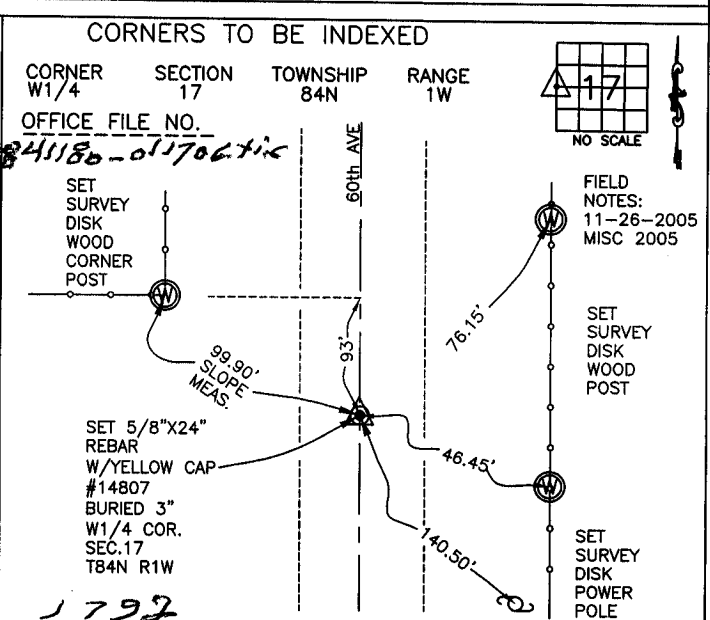
J.D. TJEPKES, LS. 14807, 23428 RIDGE ROAD, ANAMOSA, IOWA, 52205 (319-462-6067)

UNITED STATES PUBLIC LAND SURVEY CORNER CERTIFICATE

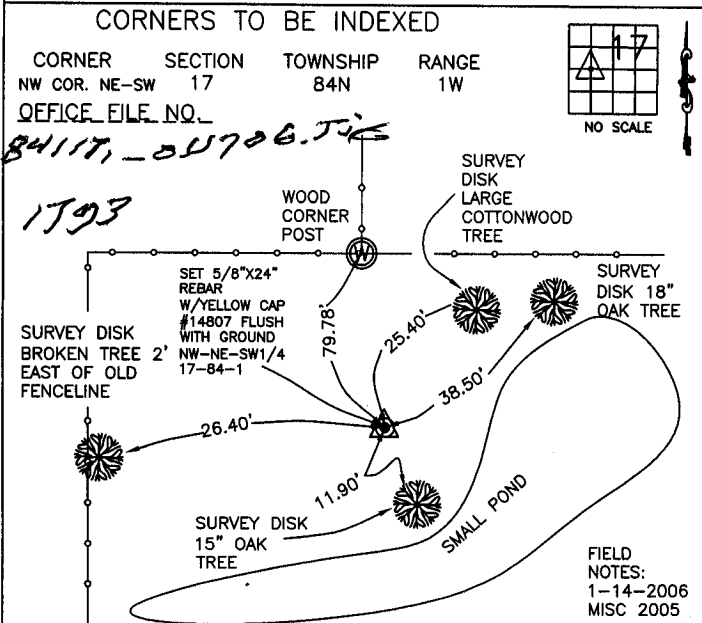
LAND SURVEY MONUMENTS SITUATED IN SECTION 17, TOWNSHIP 84
 NORTH, RANGE 1 WEST OF THE 5TH P.M., JONES COUNTY, IOWA



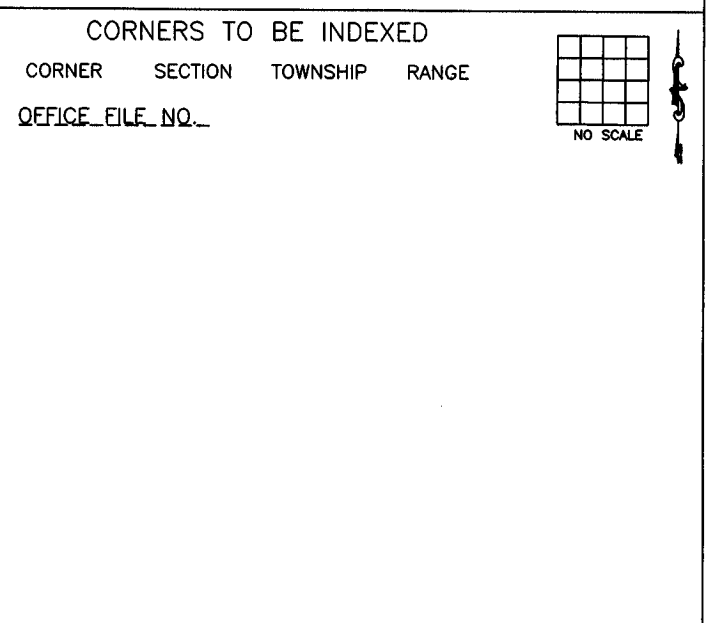
PREVIOUSLY RECORDED IN BOOK NA, PAGE NA
 MONUMENT DESCRIPTION AND HOW ESTABLISHED
 PER PHYSICAL EVIDENCE, CENTERLINE ROAD AND PROPORTIONATE DISTANCE FROM FD SW CORNER SECTION 17 AND FD W1/4 CORNER SECTION 8, SET 5/8"X24" REBAR W/YELLOW CAP #14807 BURIED 3" IN ROADBED. TIES AS INDICATED FOR NW CORNER SECTION 17 T84N R1W.



PREVIOUSLY RECORDED IN BOOK NA, PAGE NA
 MONUMENT DESCRIPTION AND HOW ESTABLISHED
 PER PHYSICAL EVIDENCE, CENTERLINE ROAD AND PROPORTIONATE DISTANCE FROM FD SW CORNER SECTION 17 AND FD W1/4 CORNER SECTION 8, SET 5/8"X24" REBAR W/YELLOW CAP #14807 BURIED 3" IN ROADBED. TIES AS INDICATED FOR W1/4 CORNER SECTION 17 T84N R1W.



PREVIOUSLY RECORDED IN BOOK NA, PAGE NA



PREVIOUSLY RECORDED IN BOOK _____, PAGE _____