

THIS IS NOT A CERTIFICATION

JONES COUNTY ENGINEER'S OFFICE, 19501 HWY. 64, ANAMOSA, IOWA, 52205 (319)462-3785

UNITED STATES PUBLIC LAND SURVEY CORNER CERTIFICATE

LAND SURVEY MONUMENTS SITUATED IN SECTION 1, TOWNSHIP 84
NORTH, RANGE 1 WEST OF THE 5TH P.M., JONES COUNTY, IOWA

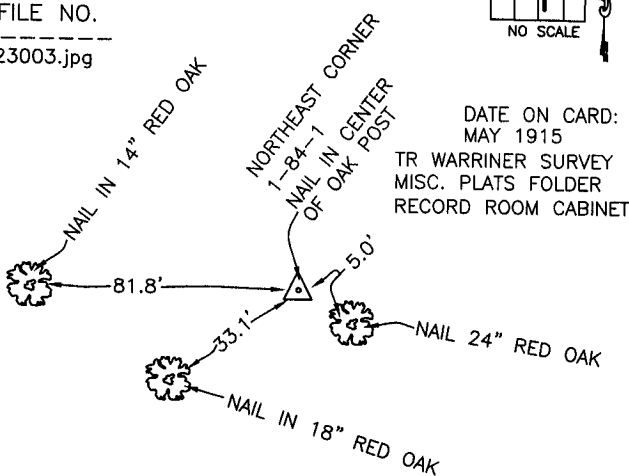
CORNERS TO BE INDEXED

CORNER SECTION TOWNSHIP RANGE
NORTHEAST 1 84N 1W

OFFICE FILE NO.

84101e_123003.jpg

1194



DATE ON CARD:
MAY 1915

TR WARRINER SURVEY
MISC. PLATS FOLDER
RECORD ROOM CABINET

PREVIOUSLY RECORDED IN BOOK _____, PAGE _____
MONUMENT DESCRIPTION AND HOW ESTABLISHED THIS
SKETCH WAS CREATED FROM TIES SHOWN ON THE SMALL INDEX
CARD. REF: TO SHIVE-HATTERY (EXHIBIT 1) NORTHEAST CORNER
SECTION 1, TOWNSHIP 84 NORTH, RANGE 1 WEST OF THE 5TH
PRINCIPAL MERIDIAN, JONES COUNTY, IOWA. NAIL IN CENTER OF OAK
POST.

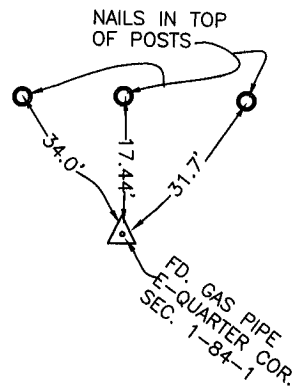
CORNERS TO BE INDEXED

CORNER SECTION TOWNSHIP RANGE
E-QUARTER 1 84N 1W

OFFICE FILE NO.

84101o_123003.jpg

1195



DATE ON CARD:
MAY 1915

TR WARRINER SURVEY
MISC. PLATS FOLDER
RECORD ROOM CABINET

PREVIOUSLY RECORDED IN BOOK _____, PAGE _____
MONUMENT DESCRIPTION AND HOW ESTABLISHED THIS
SKETCH WAS CREATED FROM TIES SHOWN ON THE SMALL INDEX
CARD. REF: TO SHIVE-HATTERY (EXHIBIT 1) EAST-QUARTER CORNER
SECTION 1, TOWNSHIP 84 NORTH, RANGE 1 WEST OF THE 5TH
PRINCIPAL MERIDIAN, JONES COUNTY, IOWA. FOUND GAS PIPE

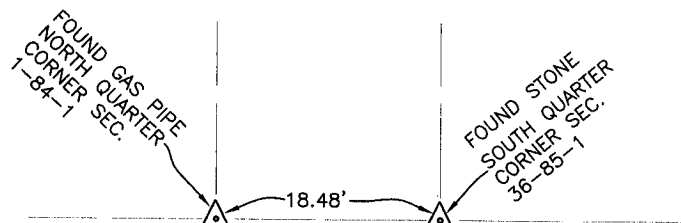
CORNERS TO BE INDEXED

CORNER SECTION TOWNSHIP RANGE
N-QUARTER 1 84N 1W

OFFICE FILE NO.

84101c_123003.jpg

1196



DATE ON CARD:
MAY 1915

TR WARRINER SURVEY
MISC. PLATS FOLDER
RECORD ROOM CABINET

PREVIOUSLY RECORDED IN BOOK _____, PAGE _____
MONUMENT DESCRIPTION AND HOW ESTABLISHED THIS
SKETCH WAS CREATED FROM TIES SHOWN ON THE SMALL INDEX
CARD. REF: TO SHIVE-HATTERY (EXHIBIT 1) N-QUARTER CORNER
SECTION 1, TOWNSHIP 84 NORTH, RANGE 1 WEST OF THE 5TH
PRINCIPAL MERIDIAN, JONES COUNTY, IOWA. (GAS PIPE)

CORNERS TO BE INDEXED

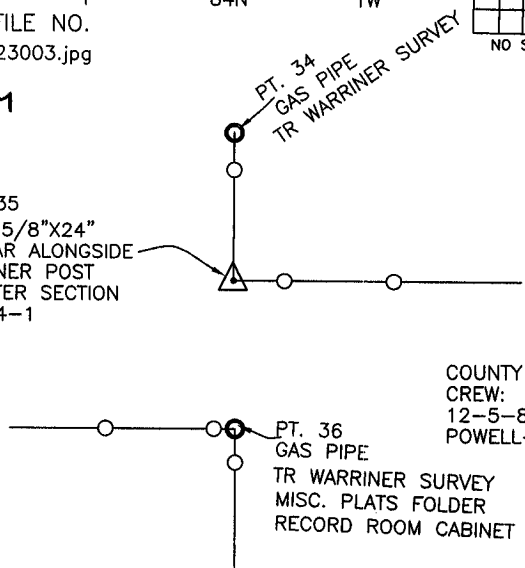
CORNER SECTION TOWNSHIP RANGE
CENTER 1 84N 1W

OFFICE FILE NO.

84101m_123003.jpg

1197

PT. 35
SET 5/8"X24"
REBAR ALONGSIDE
CORNER POST
CENTER SECTION
1-84-1



COUNTY SURVEY
CREW:
12-5-86
POWELL-WOOD

PREVIOUSLY RECORDED IN BOOK _____, PAGE _____
MONUMENT DESCRIPTION AND HOW ESTABLISHED USED POINT
36-34 TO RE-ESTABLISH CENTER OF SECTION 1, TOWNSHIP 84 NORTH,
RANGE 1 WEST OF THE 5TH PRINCIPAL MERIDIAN, JONES COUNTY,
IOWA PER THE T.R. WARRINER SURVEY, DATED MAY 1915, DISTANCES
CHECKED GOOD. PROJ. NO. RS-4785(2)

~~I hereby declare that this plat, survey or report was made by me or under my direct personal supervision and that I am a duly registered Land Surveyor under the laws of the State of Iowa.~~

Signed:

SEAL

JONES COUNTY
ENGINEER'S OFFICE

19501 HWY. 64,
ANAMOSA, IOWA,
52205 (319)462-3785