

Instrument #: 2020-1425
 05/19/2020 03:56:10 PM Total Pages: 1
 ZSC SECTION CORNER CERTIFICATE
 Recording Fee: \$7.00 Transfer Tax: \$0
 Sheri L. Jones, Recorder, Jones County Iowa



Prepared by Wm. Burger Land Surveyor 510 3rd Street West Court, Worthington, Iowa 52078 Phone 563 - 856 2028

UNITED STATES PUBLIC LAND SURVEY CORNER CERTIFICATE

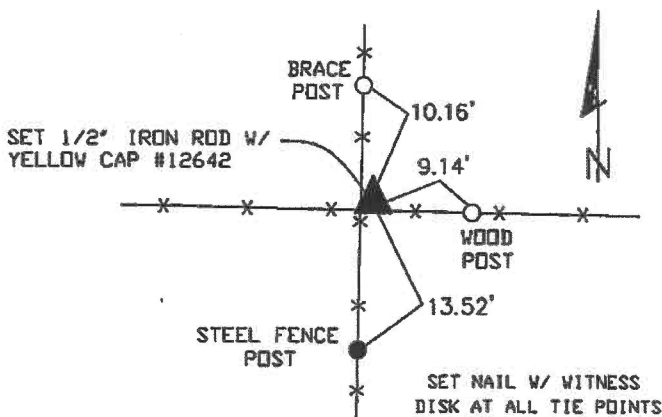
Land Survey Monuments situated in Section 20, Township 84N, Range 1W, of the Fifth Principal Meridian, Jones County, Iowa. Previously recorded in N/A in the Office of the County Recorder

Monument Description and Remarks: (No Corner Certificates found at the County Recorder's Office)

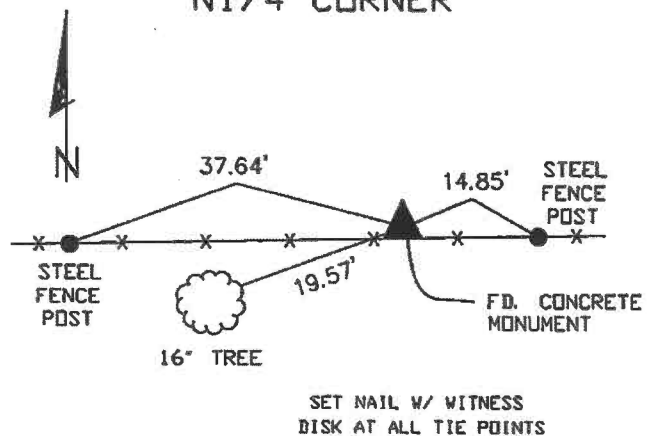
NW CORNER NE1/4 NW1/4 - SET 1/2" IRON ROD WITH YELLOW CAP #12642 - SET ON LINE BETWEEN THE NW CORNER AND THE N1/4 CORNER AND 1352.20 FEET EAST OF THE NW CORNER AS SHOWN ON PLAT RECORDED IN BOOK 368, PAGE 25 IN THE OFFICE OF THE JONES COUNTY RECORDER (SEARCHED FOR BUT DID NOT FIND ANY STONE)
 N1/4 CORNER - FOUND CONCRETE MONUMENT
 NW CORNER SW1/4 NW1/4 - SET 1/2" IRON ROD WITH YELLOW CAP #12642 - SET ON LINE AND MIDWAY BETWEEN THE NW CORNER AND THE W1/4 CORNER
 NE CORNER SW1/4 NW1/4 - SET 1/2" IRON ROD WITH YELLOW CAP #12642 - RUN STRAIGHT LINES FROM OPPOSITE 1/4 1/4 CORNERS AND SET AT THE POINT OF INTERSECTION

PLAN VIEW

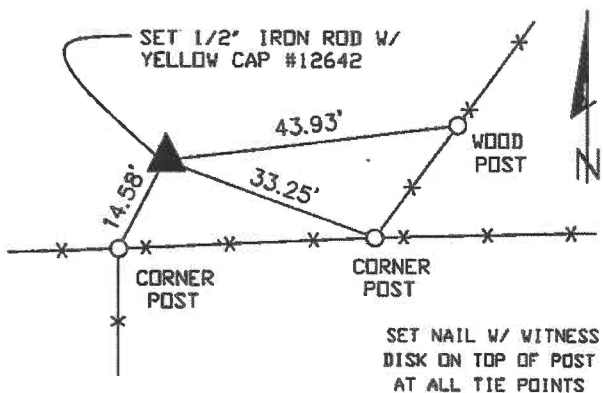
NW CORNER NE1/4 NW1/4



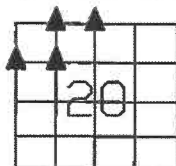
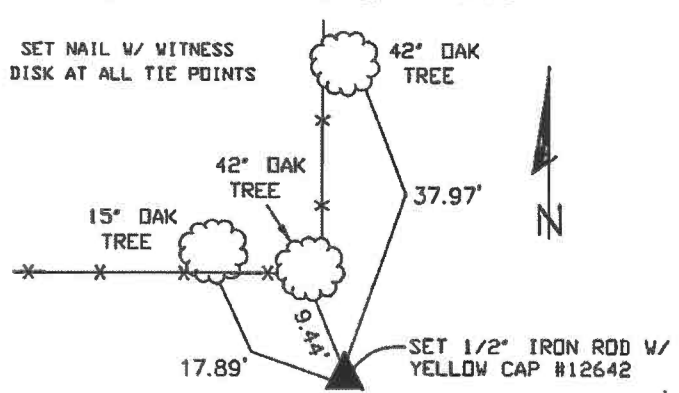
N1/4 CORNER



NW CORNER SW1/4 NW1/4



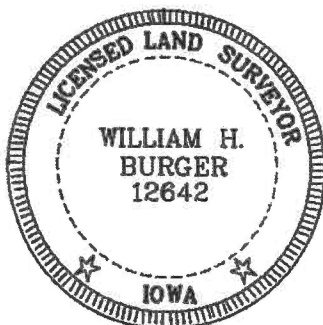
NE CORNER SW1/4 NW1/4



SEC. 20 TWP. 84N RANGE 1W

CORNERS TO BE INDEXED

NW CORNER NE1/4 NW1/4	20	84N	1W
N1/4 CORNER	20	84N	1W
NW CORNER SW1/4 NW1/4	20	84N	1W
NE CORNER SW1/4 NW1/4	20	84N	1W



I hereby certify that this land surveying document was prepared and related survey work was performed by me or under my direct personal supervision and that I am a duly licensed Land Surveyor under the laws of the State of Iowa.

William H. Burger 5/19/2020
 William H. Burger Date

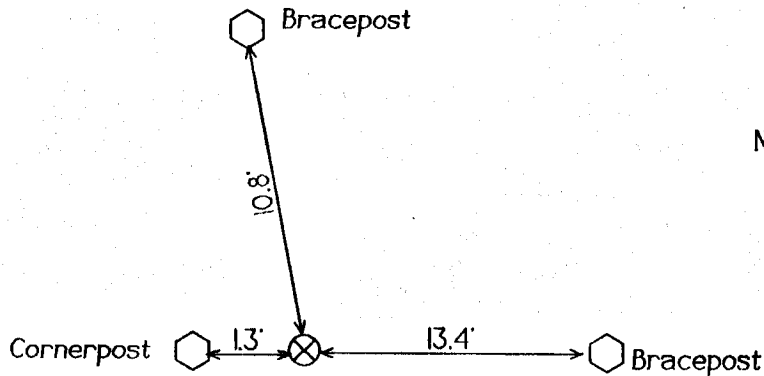
License number 12642

My license renewal date is December 31, 2020

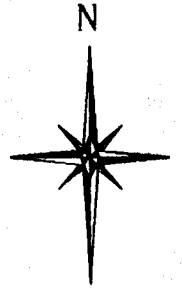
Pages or Sheets covered by this seal: Sheet 1 of 1

United States Public Land Survey Corner Certificate

Land survey corner in Section 17 Township 84
North, Range 1 West of the 5th Principal Meridian
Jones County, Iowa.

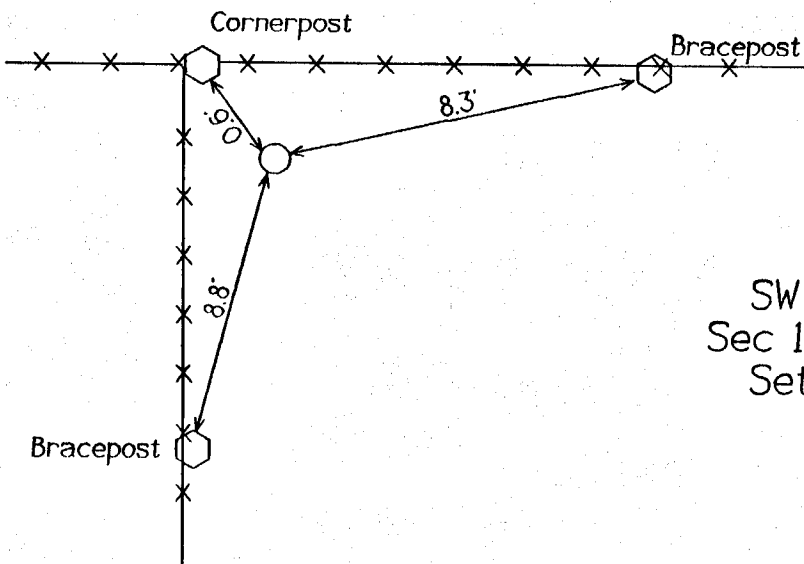
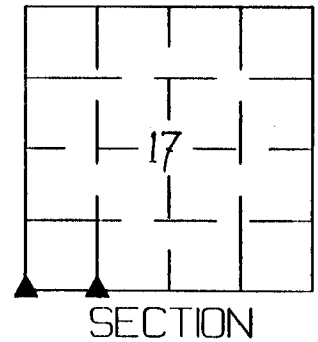


No Scale



SE Cor
SW SW
Sec 17-84-1
Fnd. Stone

*on Cord
11-29-94*



SW Cor
Sec 17-84-1
Set I.P.

*on Cord
NE Cor. Sec. 19
11-29-94*

Certification

I hereby certify that this plat and survey was made by me or under my direct supervision and that I am a duly Registered Land Surveyor under the laws of the State of Iowa.

Harold E. Dillon
Harold E. Dillon Reg.#6581

10/26/94
date

