

Instrument #: 2020-1425  
 05/19/2020 03:58:10 PM Total Pages: 1  
 ZSC SECTION CORNER CERTIFICATE  
 Recording Fee: \$7.00 Transfer Tax: \$0  
 Sheri L. Jones, Recorder, Jones County Iowa



Prepared by Wm. Burger Land Surveyor 510 3rd Street West Court, Worthington, Iowa 52078 Phone 563 - 856 2028

**UNITED STATES PUBLIC LAND SURVEY CORNER CERTIFICATE**

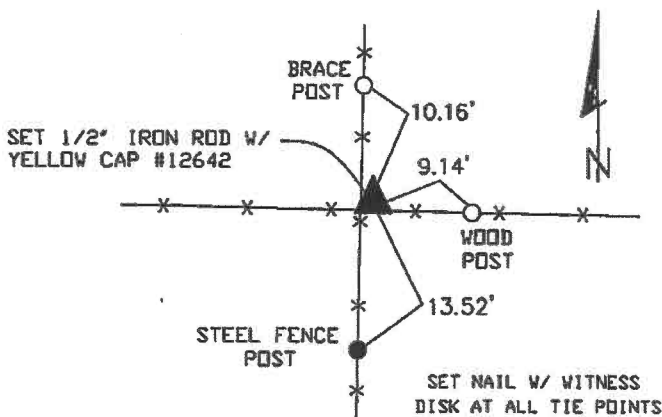
Land Survey Monuments situated in Section 20, Township 84N, Range 1W, of the Fifth Principal Meridian, Jones County, Iowa. Previously recorded in N/A in the Office of the County Recorder

Monument Description and Remarks: (No Corner Certificates found at the County Recorder's Office)

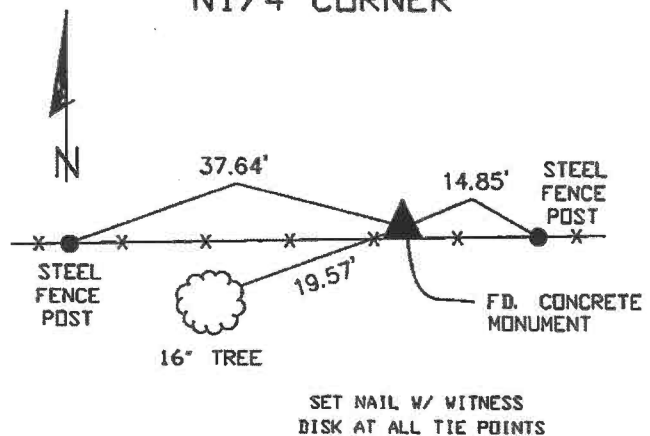
NW CORNER NE1/4 NW1/4 - SET 1/2" IRON ROD WITH YELLOW CAP #12642 - SET ON LINE BETWEEN THE NW CORNER AND THE N1/4 CORNER AND 1352.20 FEET EAST OF THE NW CORNER AS SHOWN ON PLAT RECORDED IN BOOK 368, PAGE 25 IN THE OFFICE OF THE JONES COUNTY RECORDER (SEARCHED FOR BUT DID NOT FIND ANY STONE)  
 N1/4 CORNER - FOUND CONCRETE MONUMENT  
 NW CORNER SW1/4 NW1/4 - SET 1/2" IRON ROD WITH YELLOW CAP #12642 - SET ON LINE AND MIDWAY BETWEEN THE NW CORNER AND THE W1/4 CORNER  
 NE CORNER SW1/4 NW1/4 - SET 1/2" IRON ROD WITH YELLOW CAP #12642 - RUN STRAIGHT LINES FROM OPPOSITE 1/4 1/4 CORNERS AND SET AT THE POINT OF INTERSECTION

**PLAN VIEW**

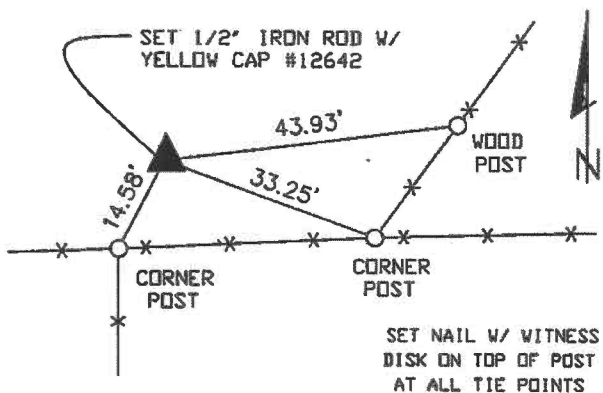
NW CORNER NE1/4 NW1/4



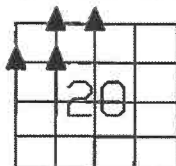
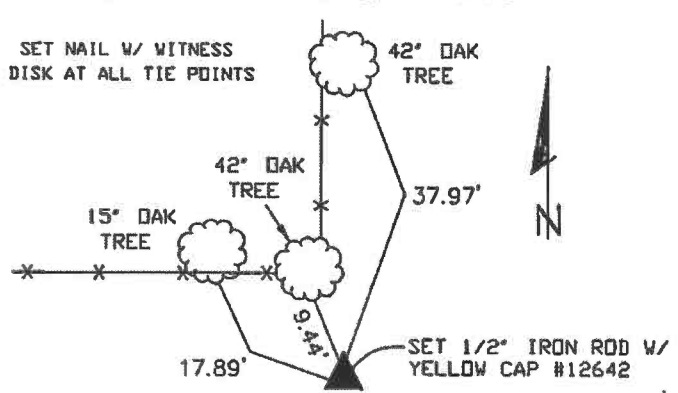
N1/4 CORNER



NW CORNER SW1/4 NW1/4



NE CORNER SW1/4 NW1/4



SEC. 20 TWP. 84N RANGE 1W

**CORNERS TO BE INDEXED**

NW CORNER NE1/4 NW1/4	20	84N	1W
N1/4 CORNER	20	84N	1W
NW CORNER SW1/4 NW1/4	20	84N	1W
NE CORNER SW1/4 NW1/4	20	84N	1W



I hereby certify that this land surveying document was prepared and related survey work was performed by me or under my direct personal supervision and that I am a duly licensed Land Surveyor under the laws of the State of Iowa.

*William H. Burger* 5/19/2020  
 William H. Burger Date

License number 12642

My license renewal date is December 31, 2020

Pages or Sheets covered by this seal: Sheet 1 of 1

Instrument #: 2020-1253  
 05/08/2020 10:10:53 AM Total Pages: 1  
 ZSC SECTION CORNER CERTIFICATE  
 Recording Fee: \$7.00 Transfer Tax: \$0  
 Sheri L. Jones, Recorder, Jones County Iowa



PREPARED BY: MICHAEL J. WEBER, WEBER SURVEYING, LLC, 26789 46TH AVE, BERNARD, IA 52032 (563) 879-4173

# UNITED STATES PUBLIC LAND SURVEY CORNER CERTIFICATE OF

LAND SURVEY MONUMENTS SITUATED IN SECTION 17, TOWNSHIP 84 NORTH, RANGE 1 WEST  
 OF THE FIFTH PRINCIPAL MERIDIAN, JONES COUNTY, IOWA.  
 PREVIOUSLY RECORDED SEE NOTES BELOW

(book, page, document number, etc.)

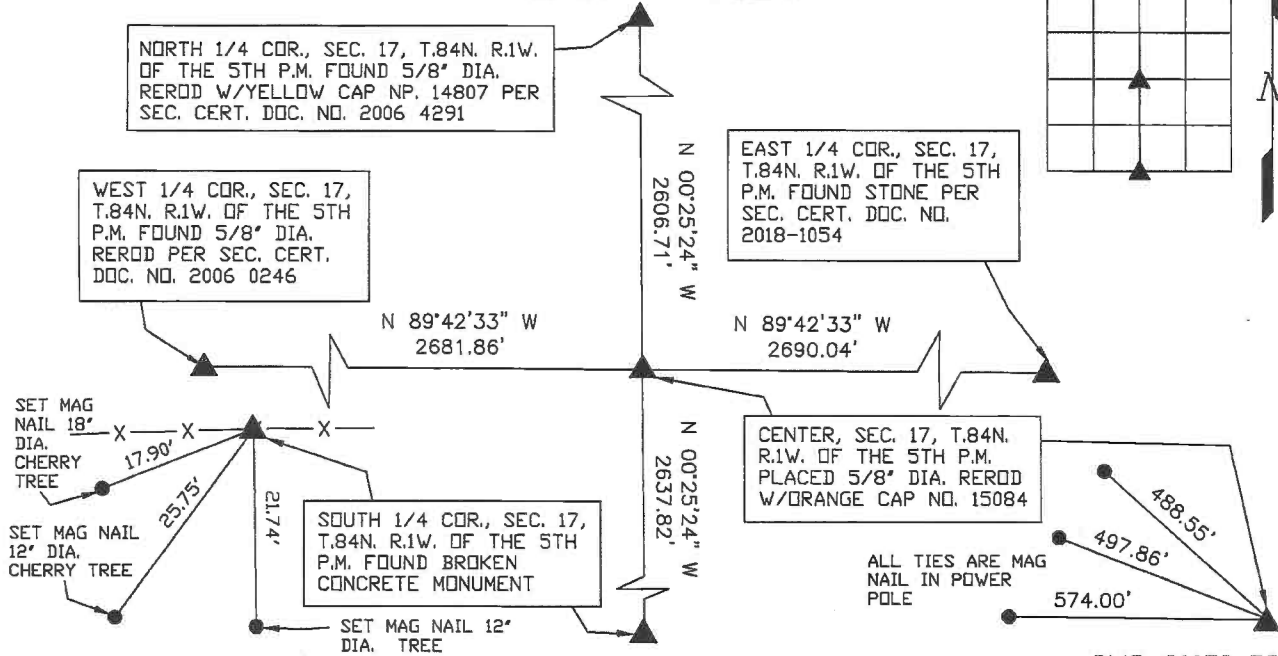
(Show reason for preparing this certificate, the evidence and detailed procedures used in establishing the corner positions and monumentation found or placed.)

**Monument Description and Remarks:**

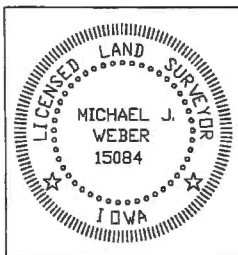
-SOUTH 1/4 COR., SEC. 17, T.84N. R.1W. OF THE 5TH P.M. FOUND BROKEN CONCRETE MONUMENT USING COR. CERT. INFORMATION IN THE COUNTY ENGINEERS OFFICE.  
 -CENTER, SEC. 17, T.84N. R.1W. OF THE 5TH P.M. PLACED A 5/8" DIA. REROD W/ORANGE CAP NO. 15084, ESTABLISHED CORNER AT THE INTERSECTION OF LINES BETWEEN THE EAST & WEST 1/4 CORNERS WITH THE NORTH & SOUTH 1/4 CORNERS.

(Show a minimum of three reference ties to durable physical objects, relevant monuments and physical conditions that will enable recovery of the corner.)

## PLAN - VIEW



DWG. 20059-EGGERT



I HEREBY CERTIFY THAT THIS LAND SURVEYING DOCUMENT WAS PREPARED AND THE RELATED SURVEY WORK WAS PERFORMED BY ME OR UNDER MY DIRECT PERSONAL SUPERVISION AND THAT I AM A DULY LICENSED LAND SURVEYOR UNDER THE LAWS OF THE STATE OF IOWA.

*Michael J. Weber* May 6, 2020  
 MICHAEL J. WEBER (DATE)

LICENSE NUMBER 15084  
 MY LICENSE RENEWAL DATE IS DECEMBER 31, 2021

SHEETS COVERED BY THIS SEAL: This sheet

List Corners to be Indexed		
Corner	Sec	Twp Range
SOUTH 1/4 COR.,	17	84N 1W
CENTER	17	84N 1W

# THIS IS NOT A CERTIFICATION

JONES COUNTY ENGINEER'S OFFICE, 19501 HWY. 64, ANAMOSA, IOWA, 52205 (319)462-3785

## UNITED STATES PUBLIC LAND SURVEY CORNER CERTIFICATE

LAND SURVEY MONUMENTS SITUATED IN SECTION 20, TOWNSHIP 84  
NORTH, RANGE 1 WEST OF THE 5TH P.M., JONES COUNTY, IOWA

CORNERS TO BE INDEXED

CORNER NORTHEAST	SECTION 20	TOWNSHIP 84N	RANGE 1W
---------------------	---------------	-----------------	-------------

OFFICE FILE NO. \_\_\_\_\_  
84120e\_011304.jpg

REFERENCE:  
DOT PLAT F-64-1(8)--20-53  
FEB. 27, 1979

PREVIOUSLY RECORDED IN BOOK \_\_\_\_\_, PAGE \_\_\_\_\_  
MONUMENT DESCRIPTION AND HOW ESTABLISHED INFORMATION  
FOR THE ABOVE TAKEN FROM DOT PLAT F-64-1(8)--20-53. SET DOT  
MONUMENT FLUSH WITH GROUND. NORTHEAST CORNER SECTION 20,  
TOWNSHIP 84 NORTH, RANGE 1 WEST OF THE 5TH PRINCIPAL  
MERIDIAN, JONE COUNTY, IOWA. TIES AS INDICATED.

CORNERS TO BE INDEXED

CORNER N-QUARTER	SECTION 20	TOWNSHIP 84N	RANGE 1W
---------------------	---------------	-----------------	-------------

OFFICE FILE NO. \_\_\_\_\_  
84120c\_011304.jpg

1308

REFERENCE:  
DOT PLAT F-64-1(8)--20-53  
AUGUST 31, 1976

SET CONC. MON. OVER  
FD. GRANITE STONE  
N1/4-20-84-1

PREVIOUSLY RECORDED IN BOOK \_\_\_\_\_, PAGE \_\_\_\_\_  
MONUMENT DESCRIPTION AND HOW ESTABLISHED INFORMATION  
FOR THE ABOVE TAKEN FROM DOT PLAT F-64-1(8)--20-53. FOUND  
6"x9"x12" GRANITE STONE, LOWERED AND SET CONCRETE MONUMENT,  
NORTH QUARTER CORNER SECTION 20, TOWNSHIP 84 NORTH, RANGE  
1 WEST OF THE 5TH PRINCIPAL MERIDIAN, JONE COUNTY, IOWA.

CORNERS TO BE INDEXED

CORNER E-QUARTER	SECTION 20	TOWNSHIP 84N	RANGE 1W
---------------------	---------------	-----------------	-------------

OFFICE FILE NO. \_\_\_\_\_  
84120o\_011304.jpg

1309

REFERENCE:  
DOT PLAT F-64-1(8)--20-53  
AUGUST 31, 1976

FD. 5"x6"x9" LIMESTONE  
3" ABOVE GROUND  
E1/4-20-84-1

PREVIOUSLY RECORDED IN BOOK \_\_\_\_\_, PAGE \_\_\_\_\_  
MONUMENT DESCRIPTION AND HOW ESTABLISHED INFORMATION  
FOR THE ABOVE TAKEN FROM DOT PLAT F-64-1(8)--20-53. FOUND  
5"x6"x9" LIMESTONE 3" ABOVE GROUND. EAST QUARTER CORNER  
SECTION 20, TOWNSHIP 84 NORTH, RANGE 1 WEST OF THE 5TH  
PRINCIPAL MERIDIAN, JONES COUNTY, IOWA. TIES AS INDICATED.

CORNERS TO BE INDEXED

CORNER	SECTION	TOWNSHIP	RANGE
--------	---------	----------	-------

OFFICE FILE NO. \_\_\_\_\_

PREVIOUSLY RECORDED IN BOOK \_\_\_\_\_, PAGE \_\_\_\_\_  
MONUMENT DESCRIPTION AND HOW ESTABLISHED

~~I hereby declare that this plat, survey or report was made by me or under my direct personal supervision and that I am a duly registered Land Surveyor under the laws of the State of Iowa.~~

Signed: \_\_\_\_\_

SEAL

JONES COUNTY  
ENGINEER'S OFFICE

19501 HWY. 64,  
ANAMOSA, IOWA,  
52205 (319)462-3785