

THIS IS NOT A CERTIFICATION

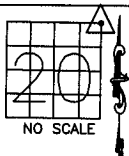
JONES COUNTY ENGINEER'S OFFICE, 19501 HWY. 64, ANAMOSA, IOWA, 52205 (319)462-3785

UNITED STATES PUBLIC LAND SURVEY CORNER CERTIFICATE

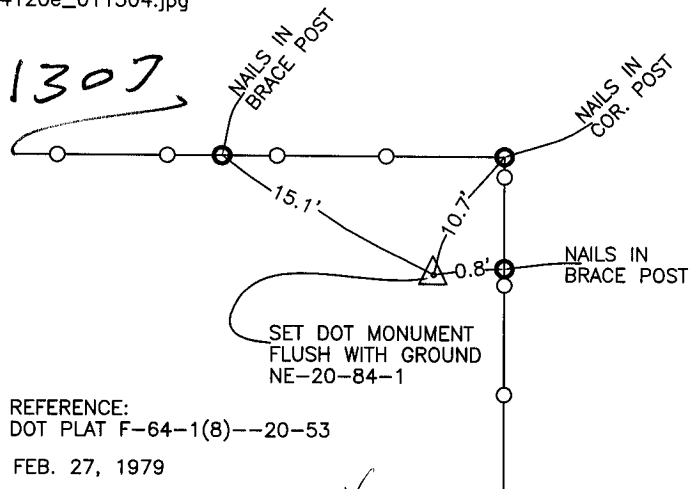
LAND SURVEY MONUMENTS SITUATED IN SECTION 20, TOWNSHIP 84
NORTH, RANGE 1 WEST OF THE 5TH P.M., JONES COUNTY, IOWA

CORNERS TO BE INDEXED

CORNER SECTION TOWNSHIP RANGE
NORTHEAST 20 84N 1W



OFFICE FILE NO.
84120e_011304.jpg

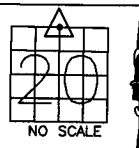


REFERENCE:
DOT PLAT F-64-1(8)--20-53
FEB. 27, 1979

PREVIOUSLY RECORDED IN BOOK _____, PAGE _____
MONUMENT DESCRIPTION AND HOW ESTABLISHED INFORMATION
FOR THE ABOVE TAKEN FROM DOT PLAT F-64-1(8)--20-53. SET DOT
MONUMENT FLUSH WITH GROUND. NORTHEAST CORNER SECTION 20,
TOWNSHIP 84 NORTH, RANGE 1 WEST OF THE 5TH PRINCIPAL
MERIDIAN, JONE COUNTY, IOWA. TIES AS INDICATED.

CORNERS TO BE INDEXED

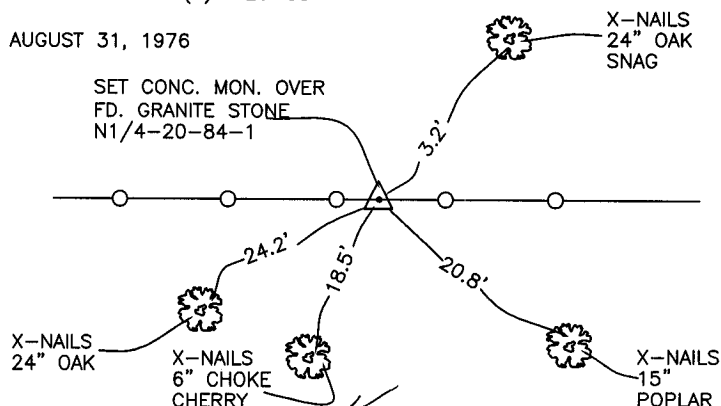
CORNER SECTION TOWNSHIP RANGE
N-QUARTER 20 84N 1W



OFFICE FILE NO.
84120c_011304.jpg

REFERENCE:
DOT PLAT F-64-1(8)--20-53

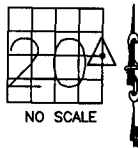
AUGUST 31, 1976



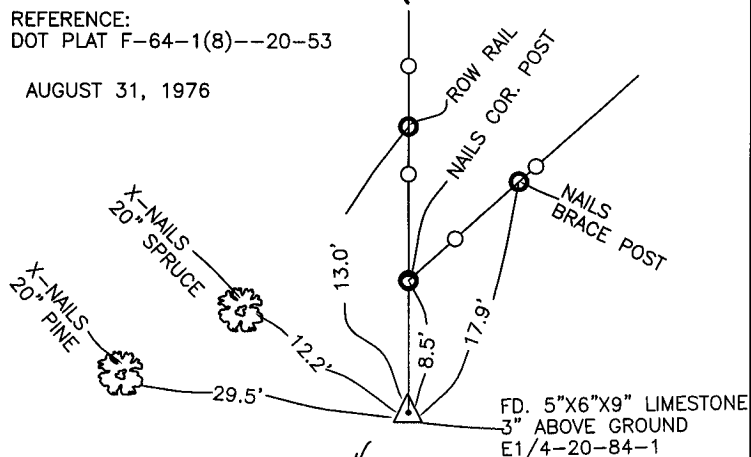
PREVIOUSLY RECORDED IN BOOK _____, PAGE _____
MONUMENT DESCRIPTION AND HOW ESTABLISHED INFORMATION
FOR THE ABOVE TAKEN FROM DOT PLAT F-64-1(8)--20-53. FOUND
6"x9"x12" GRANITE STONE, LOWERED AND SET CONCRETE MONUMENT,
NORTH QUARTER CORNER SECTION 20, TOWNSHIP 84 NORTH, RANGE
1 WEST OF THE 5TH PRINCIPAL MERIDIAN, JONE COUNTY, IOWA.

CORNERS TO BE INDEXED

CORNER SECTION TOWNSHIP RANGE
E-QUARTER 20 84N 1W



OFFICE FILE NO.
84120o_011304.jpg



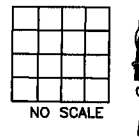
REFERENCE:
DOT PLAT F-64-1(8)--20-53

AUGUST 31, 1976

PREVIOUSLY RECORDED IN BOOK _____, PAGE _____
MONUMENT DESCRIPTION AND HOW ESTABLISHED INFORMATION
FOR THE ABOVE TAKEN FROM DOT PLAT F-64-1(8)--20-53. FOUND
5"x6"x9" LIMESTONE 3" ABOVE GROUND. EAST QUARTER CORNER
SECTION 20, TOWNSHIP 84 NORTH, RANGE 1 WEST OF THE 5TH
PRINCIPAL MERIDIAN, JONES COUNTY, IOWA. TIES AS INDICATED.

CORNERS TO BE INDEXED

CORNER SECTION TOWNSHIP RANGE



OFFICE FILE NO.

PREVIOUSLY RECORDED IN BOOK _____, PAGE _____
MONUMENT DESCRIPTION AND HOW ESTABLISHED INFORMATION

~~I hereby declare that this plat, survey or report was made by me or under my direct personal supervision and that I am a duly registered Land Surveyor under the laws of the State of Iowa.~~

Signed: _____

SEAL

JONES COUNTY
ENGINEER'S OFFICE

19501 HWY. 64,
ANAMOSA, IOWA,
52205 (319)462-3785