

COPY

Jones County Marie Krutzfield Recorder  
 Fee Book 2011 3229  
 12/16/2011 @1046AM # Pages 1  
 ZSC SEC COR CERT  
 Total Fees: \$7.00

PREPARED BY: MICHAEL J. WEBER, WEBER SURVEYING, LLC, 26789 46TH AVE, BERNARD, IA 52032 (563) 879-4173

UNITED STATES PUBLIC LAND SURVEY CORNER CERTIFICATE  
 OF

LAND SURVEY MONUMENTS SITUATED IN SECTION 22, TOWNSHIP 84 NORTH, RANGE 1 WEST  
 OF THE FIFTH PRINCIPAL MERIDIAN, JONES COUNTY, IOWA.  
 PREVIOUSLY RECORDED NONE UNLESS NOTED BELOW

(book, page, document number, etc.)

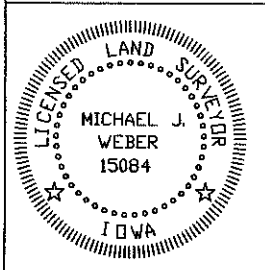
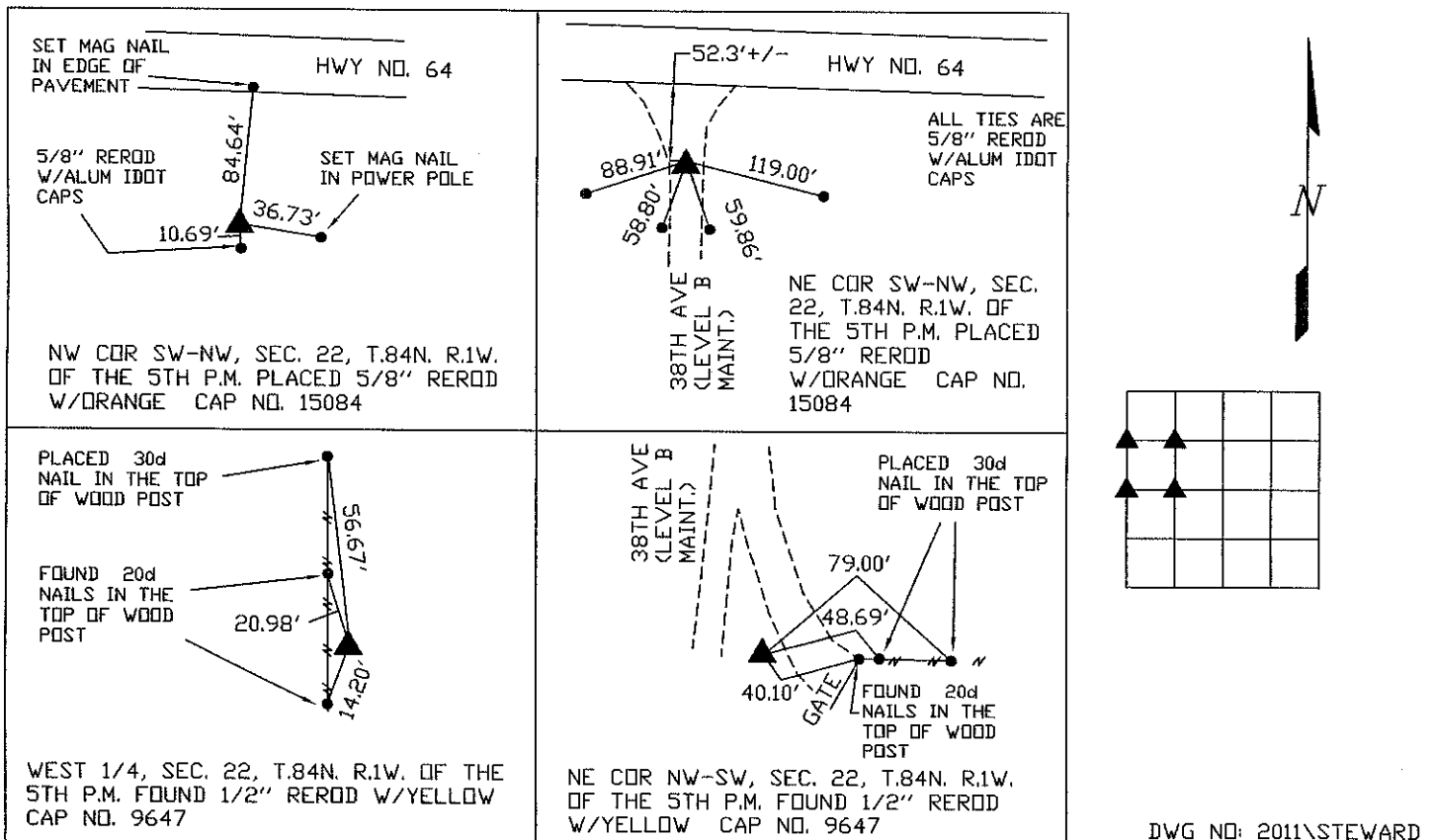
(Show reason for preparing this certificate, the evidence and detailed procedures used in establishing the corner positions and monumentation found or placed.)

Monument Description and Remarks:

- WEST 1/4, SEC. 22, T.84N. R.1W. OF THE 5TH P.M. FOUND 1/2" REROD W/YELLOW CAP NO. 9647 PER SEC COR. CERT. DOC. NO. 2009 2456 ESTABLISHED NEW TIES.
- NW COR SW-NW, SEC. 22, T.84N. R.1W. OF THE 5TH P.M. PLACED 5/8" REROD W/ORANGE CAP NO. 15084, ESTABLISHED CORNER MIDWAY AND ONLINE BETWEEN THE WEST 1/4 AND THE NW COR.
- NE COR SW-NW, SEC. 22, T.84N. R.1W. OF THE 5TH P.M. PLACED 5/8" REROD W/ORANGE CAP NO. 15084, ESTABLISHED CORNER BY BREAKDOWN OF THE NW 1/4.
- NE COR NW-SW, SEC. 22, T.84N. R.1W. OF THE 5TH P.M. FOUND 1/2" REROD W/YELLOW CAP NO. 9647 PLAT BOOK P T PAGE 75, DOC. NO. 2009 2154

PLAN - VIEW

(Show a minimum of three reference ties to durable physical objects, relevant monuments and physical conditions that will enable recovery of the corner.)



I HEREBY CERTIFY THAT THIS LAND SURVEYING DOCUMENT WAS PREPARED AND THE RELATED SURVEY WORK WAS PERFORMED BY ME OR UNDER MY DIRECT PERSONAL SUPERVISION AND THAT I AM A DULY LICENSED LAND SURVEYOR UNDER THE LAWS OF THE STATE OF IOWA.  
*Michael J. Weber* December 15, 2011  
 MICHAEL J. WEBER (DATE)  
 LICENSE NUMBER 15084  
 MY LICENSE RENEWAL DATE IS DECEMBER 31, 2011  
 SHEETS COVERED BY THIS SEAL: Sheet 1

| List Corners to be Indexed |     |     |       |
|----------------------------|-----|-----|-------|
| Corner                     | Sec | Twp | Range |
| WEST 1/4 Cor.              | 22  | 84N | 1W    |
| NW COR. SW-NW              | 22  | 84N | 1W    |
| NE COR. SW-NW              | 22  | 84N | 1W    |
| NE COR. NW-SW              | 22  | 84N | 1W    |

RECEIVED

JUL 10 2009

JONES COUNTY ENGINEER

PREPARED BY  
STEPHEN MICHAEL BRAIN, BRAIN ENGINEERING, INC., 1540 MIDLAND COURT NE, CEDAR RAPIDS, IOWA PH. (319) 294-9424

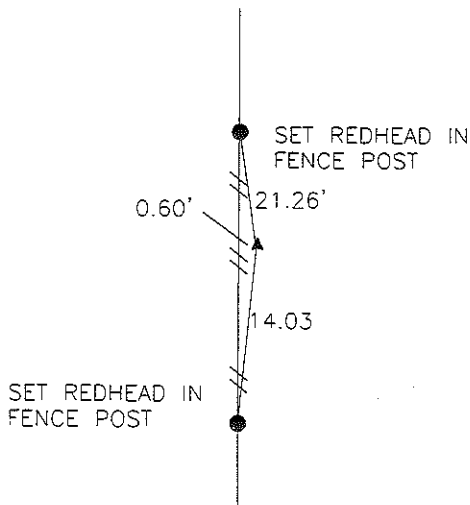
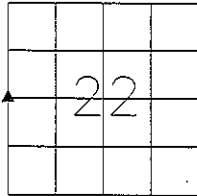
# UNITED STATES PUBLIC LAND SURVEY CORNER CERTIFICATE

LAND SURVEY MONUMENTS SITUATED IN SECTION 22, TOWNSHIP 84 NORTH  
RANGE 1 WEST OF THE 5TH P.M., JONES COUNTY, IOWA.

NO SCALE



W 1/4 CORNER



PREVIOUSLY RECORDED IN BOOK \_\_\_\_\_ PAGE \_\_\_\_\_

MONUMENT DESCRIPTION AND HOW ESTABLISHED \_\_\_\_\_

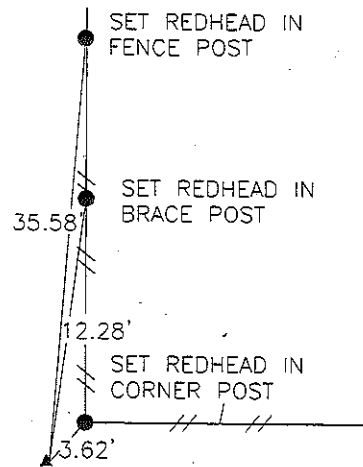
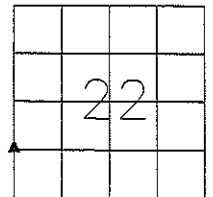
SET 1/2"REBAR W/YELLOW PLASTIC CAP #9647 AT W-LY

EXTENSION OF FENCE 1/4 TO EAST AND CENTER OF SECTION

NO SCALE



NW CORNER SW 1/4 SW 1/4

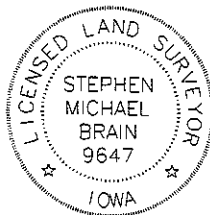


PREVIOUSLY RECORDED IN BOOK \_\_\_\_\_ PAGE \_\_\_\_\_

MONUMENT DESCRIPTION AND HOW ESTABLISHED \_\_\_\_\_

SET 1/2"REBAR W/YELLOW PLASTIC CAP #9647 AT

MIDPOINT OF WEST LINE OF NW 1/4 SECTION 22



I hereby certify that this land surveying document and the related survey work was performed by me or under my direct personal supervision and that I am a duly licensed Land Surveyor under the laws of the State of Iowa.

Signed: *[Signature]* Date: 7/8/09  
Stephen Michael Brain, L.S.  
My License Renewal Date is December 31, 2010  
License Number 9647  
Pages or sheets covered by this seal: 1/1

- A. THERE IS NO CERTIFICATE FOR THE CORNER ON FILE WITH THE RECORDER OF THE COUNTY IN WHICH THE CORNER IS LOCATED.
- B. THE SURVEYOR IN RESPONSIBLE CHARGE OF THE LAND SURVEYING ACCEPTS A CORNER POSITION WHICH DIFFERS FROM THAT SHOWN IN THE PUBLIC RECORDS OF THE COUNTY IN WHICH THE CORNER IS LOCATED.
- C. THE CORNER MONUMENT IS REPLACED OR MODIFIED IN ANY WAY.
- D. THE REFERENCE TIES REFERRED TO IN AN EXISTING PUBLIC RECORD ARE NOT CORRECT. *MAB 7/8/09*

### CORNERS TO BE INDEXED

| CORNER        | SECTION | TOWNSHIP | RANGE |
|---------------|---------|----------|-------|
| W 1/4 CORNER  | 22      | T84N     | R1W   |
| NW CORNER     | 22      | T84N     | R1W   |
| SW 1/4 SW 1/4 |         |          |       |

**BRAIN ENGINEERING, INC.**

1540 MIDLAND COURT NE  
CEDAR RAPIDS, IOWA 52402 407409-10  
(319) 294-9424

# THIS IS NOT A CERTIFICATION

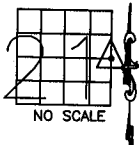
JONES COUNTY ENGINEER'S OFFICE, 19501 HWY. 64, ANAMOSA, IOWA, 52205 (319)462-3785

## UNITED STATES PUBLIC LAND SURVEY CORNER CERTIFICATE

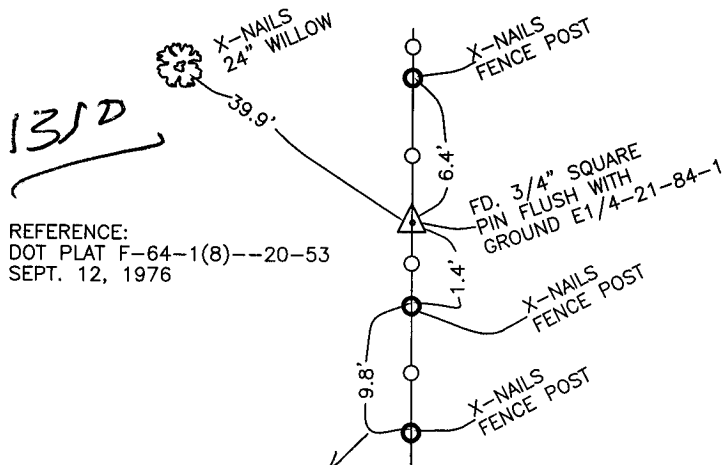
LAND SURVEY MONUMENTS SITUATED IN SECTION 21, TOWNSHIP 84  
NORTH, RANGE 1 WEST OF THE 5TH P.M., JONES COUNTY, IOWA

### CORNERS TO BE INDEXED

CORNER SECTION TOWNSHIP RANGE  
E-QUARTER 21 84N 1W  
OFFICE FILE NO.



84121o\_011304.jpg

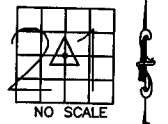


REFERENCE:  
DOT PLAT F-64-1(8)--20-53  
SEPT. 12, 1976

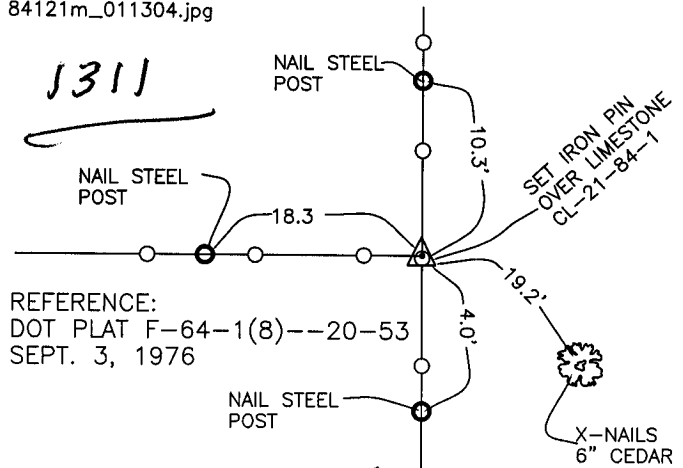
PREVIOUSLY RECORDED IN BOOK \_\_\_\_\_, PAGE \_\_\_\_\_  
MONUMENT DESCRIPTION AND HOW ESTABLISHED INFORMATION  
FOR THE ABOVE TAKEN FROM DOT PLAT F-64-1(8)--20-53, FOUND  
3/4"x10" SQUARE IRON PIN FLUSH WITH GROUND. EAST QUARTER  
CORNER SECTION 20, TOWNSHIP 84 NORTH, RANGE 1 WEST OF THE  
5TH PRINCIPAL MERIDIAN, JONES COUNTY, IOWA. TIES AS INDICATED.

### CORNERS TO BE INDEXED

CORNER SECTION TOWNSHIP RANGE  
CENTER 21 84N 1W  
OFFICE FILE NO.



84121m\_011304.jpg

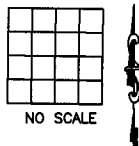


REFERENCE:  
DOT PLAT F-64-1(8)--20-53  
SEPT. 3, 1976

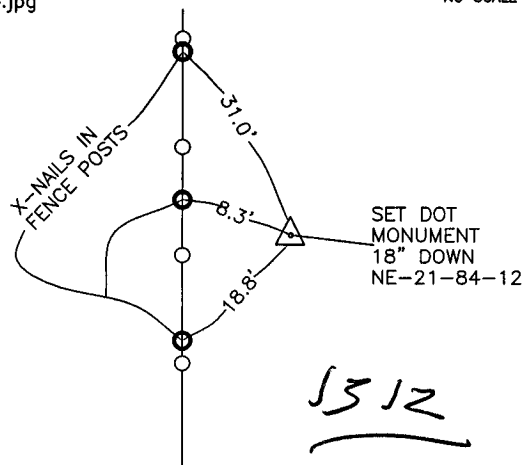
PREVIOUSLY RECORDED IN BOOK \_\_\_\_\_, PAGE \_\_\_\_\_  
MONUMENT DESCRIPTION AND HOW ESTABLISHED FOUND  
10"x15"x24" LIMESTONE BELOW OLD POST 21" DOWN. SET IRON PIN  
ABOVE STONE WITH TOP 2" ABOVE SURFACE. CENTER OF SECTION  
21, TOWNSHIP 84 NORTH, RANGE 1 WEST OF THE 5TH PRINCIPAL  
MERIDIAN, JONES COUNTY, IOWA. SET REFERENCE POINTS AS  
INDICATED.

### CORNERS TO BE INDEXED

CORNER SECTION TOWNSHIP RANGE  
OFFICE FILE NO.



84121e\_011304.jpg



REFERENCE:  
DOT PLAT F-64-1(8)--20-53  
FEB. 27, 1979

PREVIOUSLY RECORDED IN BOOK \_\_\_\_\_, PAGE \_\_\_\_\_  
MONUMENT DESCRIPTION AND HOW ESTABLISHED SET  
D.O.T. MONUMENT 18" BELOW SURFACE. NORTHEAST CORNER SECTION  
21, TOWNSHIP 84 NORTH, RANGE 1 WEST OF THE 5TH PRINCIPAL  
MERIDIAN, JONES COUNTY, IOWA. TIES AS INDICATED.

~~I hereby declare that this plat, survey or report was made by me or under my direct personal supervision and that I am a duly registered Land Surveyor under the laws of the State of Iowa.~~

Signed:

SEAL

JONES COUNTY  
ENGINEER'S OFFICE

19501 HWY. 64,  
ANAMOSA, IOWA,  
52205 (319)462-3785