

RECEIVED

JUL 10 2009

JONES COUNTY ENGINEER

PREPARED BY
STEPHEN MICHAEL BRAIN, BRAIN ENGINEERING, INC., 1540 MIDLAND COURT NE, CEDAR RAPIDS, IOWA PH. (319) 294-9424

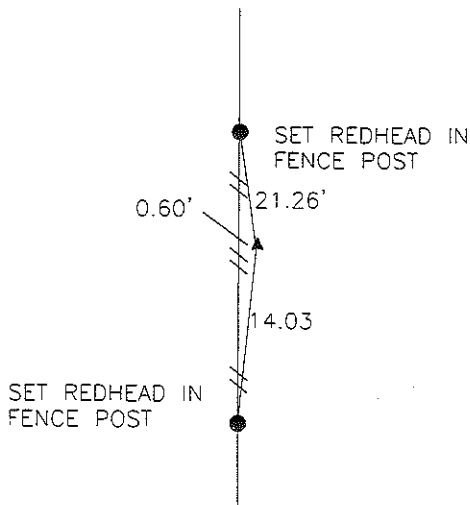
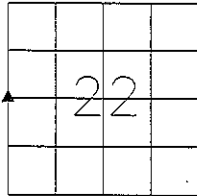
UNITED STATES PUBLIC LAND SURVEY CORNER CERTIFICATE

LAND SURVEY MONUMENTS SITUATED IN SECTION 22, TOWNSHIP 84 NORTH
RANGE 1 WEST OF THE 5TH P.M., JONES COUNTY, IOWA.

NO SCALE



W 1/4 CORNER



PREVIOUSLY RECORDED IN BOOK _____ PAGE _____

MONUMENT DESCRIPTION AND HOW ESTABLISHED _____

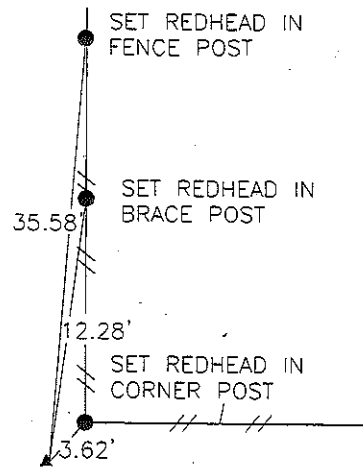
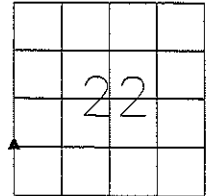
SET 1/2"REBAR W/YELLOW PLASTIC CAP #9647 AT W-LY

EXTENSION OF FENCE 1/4 TO EAST AND CENTER OF SECTION

NO SCALE



NW CORNER SW 1/4 SW 1/4

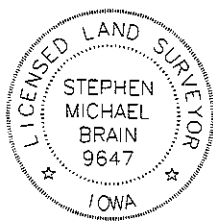


PREVIOUSLY RECORDED IN BOOK _____ PAGE _____

MONUMENT DESCRIPTION AND HOW ESTABLISHED _____

SET 1/2"REBAR W/YELLOW PLASTIC CAP #9647 AT

MIDPOINT OF WEST LINE OF NW 1/4 SECTION 22



I hereby certify that this land surveying document and the related survey work was performed by me or under my direct personal supervision and that I am a duly licensed Land Surveyor under the laws of the State of Iowa.

Signed: *[Signature]* Date: 7/8/09
Stephen Michael Brain, L.S.
My License Renewal Date is December 31, 2010
License Number 9647
Pages or sheets covered by this seal: 1/1

- A.THERE IS NO CERTIFICATE FOR THE CORNER ON FILE WITH THE RECORDER OF THE COUNTY IN WHICH THE CORNER IS LOCATED
- B.THE SURVEYOR IN RESPONSIBLE CHARGE OF THE LAND SURVEYING ACCEPTS A CORNER POSITION WHICH DIFFERS FROM THAT SHOWN IN THE PUBLIC RECORDS OF THE COUNTY IN WHICH THE CORNER IS LOCATED.
- C.THE CORNER MONUMENT IS REPLACED OR MODIFIED IN ANY WAY.
- D.THE REFERENCE TIES REFERRED TO IN AN EXISTING PUBLIC RECORD ARE NOT CORRECT. *MAB 7/8/09*

CORNERS TO BE INDEXED

CORNER	SECTION	TOWNSHIP	RANGE
W 1/4 CORNER	22	T84N	R1W
NW CORNER	22	T84N	R1W
SW 1/4 SW 1/4			

BRAIN ENGINEERING, INC.

1540 MIDLAND COURT NE
CEDAR RAPIDS, IOWA 52402 407409-10
(319) 294-9424