

2000 2467

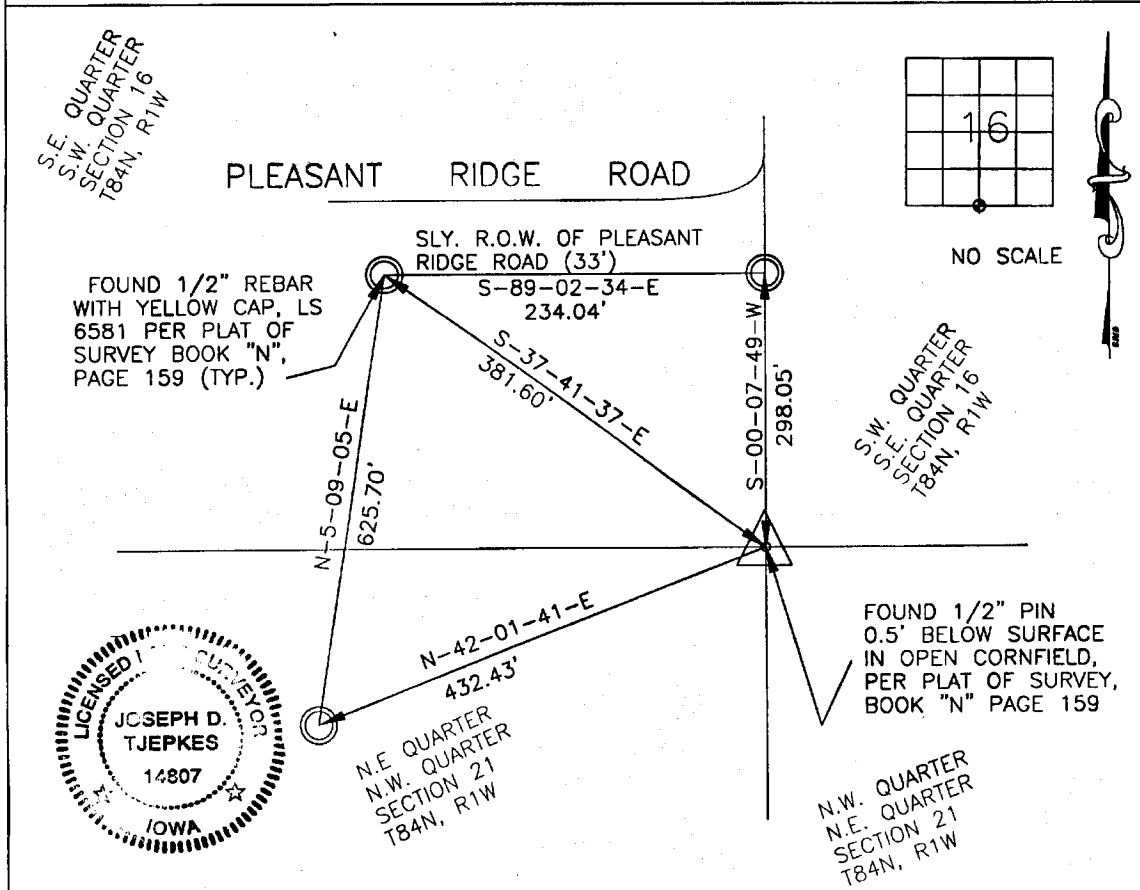
FILED  
RECORDERS OFFICE  
JONES COUNTY IOWA

00 AUG -8 PM 3:17 *NO FEE*

JONES COUNTY ENGINEER, 19501 HWY. 64, ANAMOSA, IOWA  
*PREPARED BY JD Tjepkes*

# UNITED STATES PUBLIC LAND SURVEY CORNER CERTIFICATE

LAND SURVEY MONUMENTS SITUATED IN SECTION 16, TOWNSHIP 84  
NORTH, RANGE 1 WEST OF THE 5TH P.M., JONES COUNTY, IOWA



PREVIOUSLY RECORDED IN BOOK N/A, PAGE N/A  
 MONUMENT DESCRIPTION AND HOW ESTABLISHED \_\_\_\_\_  
FOUND 1/2" REBAR 0.5' BELOW SURFACE IN OPEN CORNFIELD PER PLAT OF SURVEY  
BOOK "N", PAGE 159, JONES COUNTY. NO NATURAL FEATURES AVAILABLE TO SET TIES.  
USED PLAT OF SURVEY PINS AND CAPS AND TIED OUT AS INDICATED.

I hereby declare that this plat, survey or report was made by me or under my direct personal supervision and that I am a duly registered Land Surveyor under the laws of the State of Iowa.

Signed: *JD Tjepkes 7-27-2000*  
 Joseph B. Tjepkes L.S. Iowa Reg. No. 14807  
 My Registration Renewal Date is December 31, 2000

CORNERS TO BE INDEXED

CORNER	SECTION	TOWNSHIP	RANGE
S-1/4	16	84-N	1-W

JONES COUNTY ENGINEER  
 19501 HWY. 64,  
 ANAMOSA, IOWA