

2005 1709

FILED
RECORDERS OFFICE
JONES COUNTY IOWA

05 MAY 19 PM 12:18

MARIE KRUTZFIELD
RECORDER 7.60 Pd

PREPARED BY

STEPHEN MICHAEL BRAIN, BRAIN ENGINEERING, INC., 1540 MIDLAND COURT NE, CEDAR RAPIDS, IOWA PH. (319) 294-9424

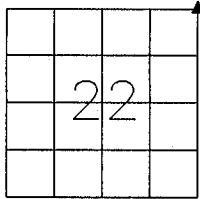
UNITED STATES PUBLIC LAND SURVEY CORNER CERTIFICATE

LAND SURVEY MONUMENTS SITUATED IN SECTION 22, TOWNSHIP 84 NORTH
RANGE 1 WEST OF THE 5TH P.M., JONES COUNTY, IOWA.

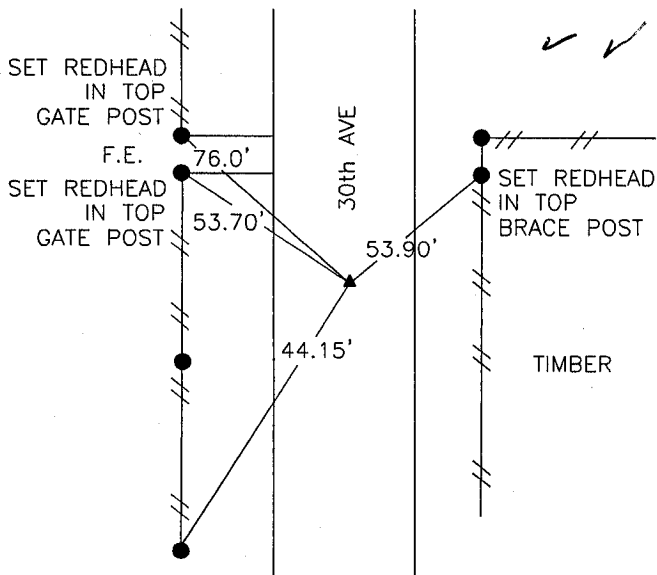
NO SCALE



NE CORNER



(1314)



84122e-051805, tie

PREVIOUSLY RECORDED IN BOOK _____ PAGE _____

MONUMENT DESCRIPTION AND HOW ESTABLISHED _____

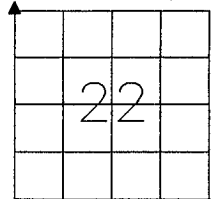
FOUND IDOT ALUMINUM MONUMENT WITH MAGNET INSERTS

4" BELOW SURFACE.

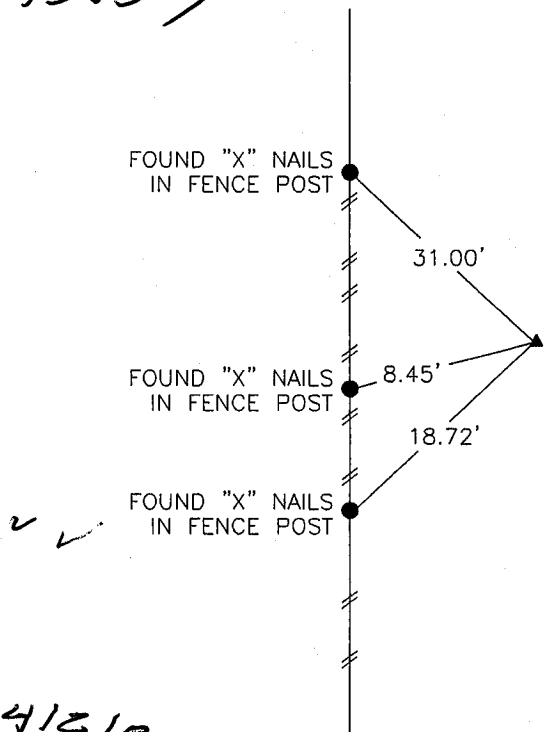
NO SCALE



NW CORNER



(1313)

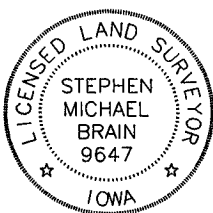


84121e-051805, tie

PREVIOUSLY RECORDED IN BOOK _____ PAGE _____

MONUMENT DESCRIPTION AND HOW ESTABLISHED _____

FOUND IDOT ALUMINUM MONUMENT WITH MAGNET INSERTS



I hereby certify that this land surveying document and the related survey work was performed by me or under my direct personal supervision and that I am a duly licensed Land Surveyor under the laws of the State of Iowa.

Signed *Stephen Michael Brain* Date *5/18/05*

Stephen Michael Brain, L.S.
My License Renewal Date is December 31, 2006
License Number 9647
Pages or sheets covered by this seal: 1/1

- A. THERE IS NO CERTIFICATE FOR THE CORNER ON FILE WITH THE RECORDER OF THE COUNTY IN WHICH THE CORNER IS LOCATED
- B. THE SURVEYOR IN RESPONSIBLE CHARGE OF THE LAND SURVEYING ACCEPTS A CORNER POSITION WHICH DIFFERS FROM THAT SHOWN IN THE PUBLIC RECORDS OF THE COUNTY IN WHICH THE CORNER IS LOCATED.
- C. THE CORNER MONUMENT IS REPLACED OR MODIFIED IN ANY WAY.
- D. THE REFERENCE TIES REFERRED TO IN AN EXISTING PUBLIC RECORD ARE NOT CORRECT.

CORNERS TO BE INDEXED

| CORNER | SECTION | TOWNSHIP | RANGE |
|-----------|---------|----------|-------|
| NE CORNER | 22 | T84N | R1 W |
| NW CORNER | 22 | T84N | R1 W |

BRAIN ENGINEERING, INC.
1540 MIDLAND COURT NE
CEDAR RAPIDS, IOWA 52402
(319) 294-9424

I

336805-10

THIS IS NOT A CERTIFICATION

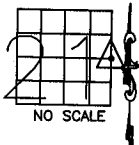
JONES COUNTY ENGINEER'S OFFICE, 19501 HWY. 64, ANAMOSA, IOWA, 52205 (319)462-3785

UNITED STATES PUBLIC LAND SURVEY CORNER CERTIFICATE

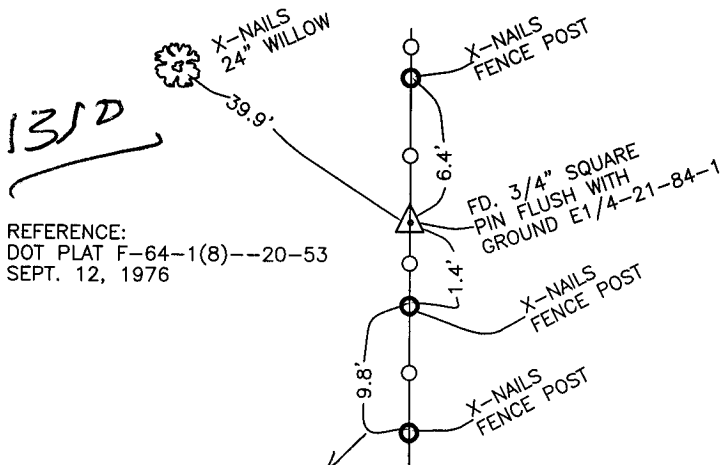
LAND SURVEY MONUMENTS SITUATED IN SECTION 21, TOWNSHIP 84
NORTH, RANGE 1 WEST OF THE 5TH P.M., JONES COUNTY, IOWA

CORNERS TO BE INDEXED

CORNER SECTION TOWNSHIP RANGE
E-QUARTER 21 84N 1W
OFFICE FILE NO.



84121o_011304.jpg

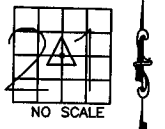


REFERENCE:
DOT PLAT F-64-1(8)--20-53
SEPT. 12, 1976

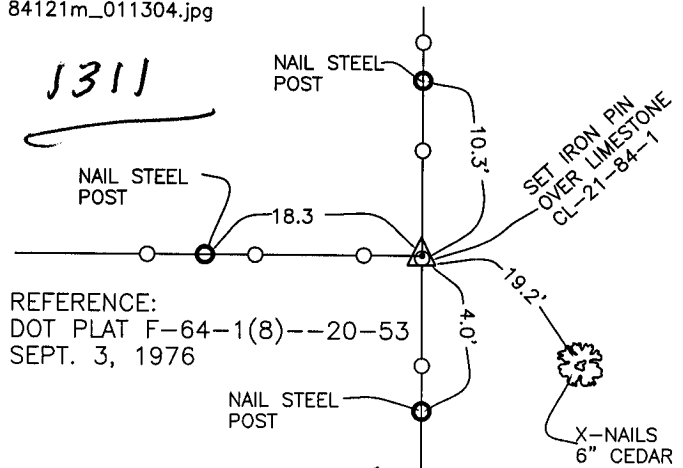
PREVIOUSLY RECORDED IN BOOK _____, PAGE _____
MONUMENT DESCRIPTION AND HOW ESTABLISHED INFORMATION
FOR THE ABOVE TAKEN FROM DOT PLAT F-64-1(8)--20-53, FOUND
3/4"x10" SQUARE IRON PIN FLUSH WITH GROUND. EAST QUARTER
CORNER SECTION 20, TOWNSHIP 84 NORTH, RANGE 1 WEST OF THE
5TH PRINCIPAL MERIDIAN, JONES COUNTY, IOWA. TIES AS INDICATED.

CORNERS TO BE INDEXED

CORNER SECTION TOWNSHIP RANGE
CENTER 21 84N 1W
OFFICE FILE NO.



84121m_011304.jpg

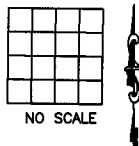


REFERENCE:
DOT PLAT F-64-1(8)--20-53
SEPT. 3, 1976

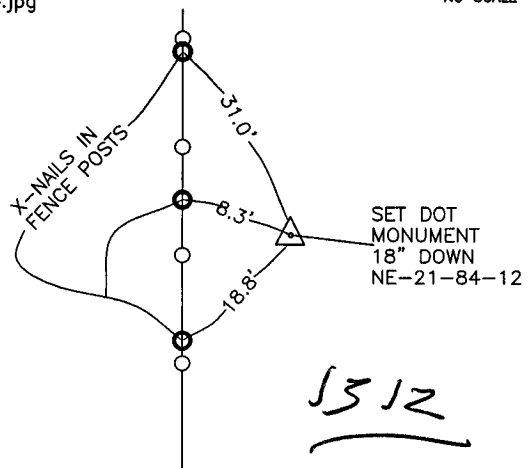
PREVIOUSLY RECORDED IN BOOK _____, PAGE _____
MONUMENT DESCRIPTION AND HOW ESTABLISHED FOUND
10"x15"x24" LIMESTONE BELOW OLD POST 21" DOWN. SET IRON PIN
ABOVE STONE WITH TOP 2" ABOVE SURFACE. CENTER OF SECTION
21, TOWNSHIP 84 NORTH, RANGE 1 WEST OF THE 5TH PRINCIPAL
MERIDIAN, JONES COUNTY, IOWA. SET REFERENCE POINTS AS
INDICATED.

CORNERS TO BE INDEXED

CORNER SECTION TOWNSHIP RANGE
OFFICE FILE NO.



84121e_011304.jpg



REFERENCE:
DOT PLAT F-64-1(8)--20-53
FEB. 27, 1979

PREVIOUSLY RECORDED IN BOOK _____, PAGE _____
MONUMENT DESCRIPTION AND HOW ESTABLISHED SET
D.O.T. MONUMENT 18" BELOW SURFACE. NORTHEAST CORNER SECTION
21, TOWNSHIP 84 NORTH, RANGE 1 WEST OF THE 5TH PRINCIPAL
MERIDIAN, JONES COUNTY, IOWA. TIES AS INDICATED.

~~I hereby declare that this plat, survey or report was made by me or under my direct personal supervision and that I am a duly registered Land Surveyor under the laws of the State of Iowa.~~

Signed: _____

SEAL

JONES COUNTY
ENGINEER'S OFFICE

19501 HWY. 64,
ANAMOSA, IOWA,
52205 (319)462-3785