

COPY

Jones County Marie Krutzfield Recorder
 Fee Book 2011 3229
 12/16/2011 @1046AM # Pages 1
 ZSC SEC COR CERT
 Total Fees: \$7.00

PREPARED BY: MICHAEL J. WEBER, WEBER SURVEYING, LLC, 26789 46TH AVE, BERNARD, IA 52032 (563) 879-4173

UNITED STATES PUBLIC LAND SURVEY CORNER CERTIFICATE OF

LAND SURVEY MONUMENTS SITUATED IN SECTION 22, TOWNSHIP 84 NORTH, RANGE 1 WEST OF THE FIFTH PRINCIPAL MERIDIAN, JONES COUNTY, IOWA.
 PREVIOUSLY RECORDED NONE UNLESS NOTED BELOW

(book, page, document number, etc.)

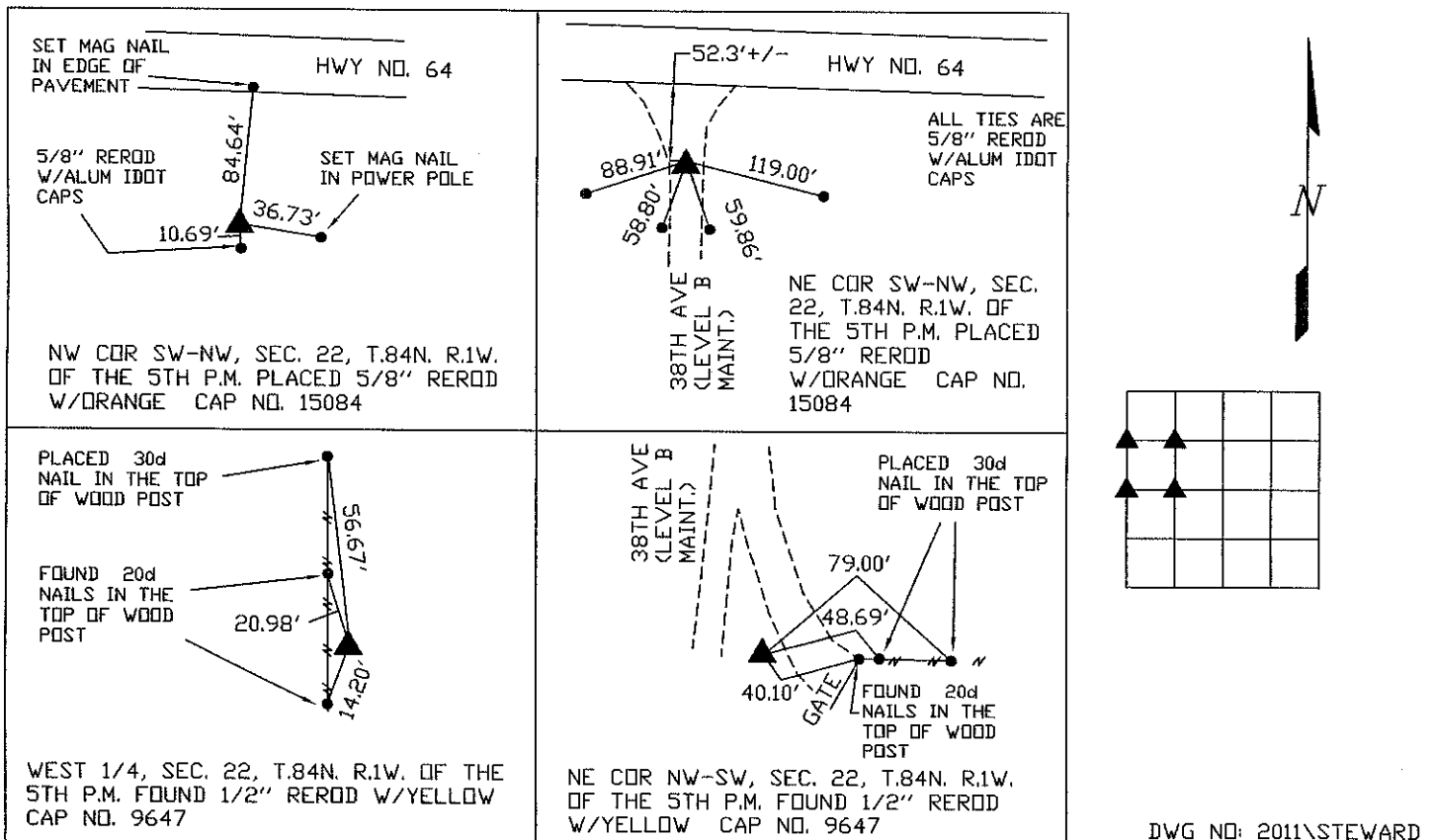
(Show reason for preparing this certificate, the evidence and detailed procedures used in establishing the corner positions and monumentation found or placed.)

Monument Description and Remarks:

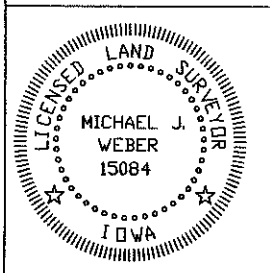
- WEST 1/4, SEC. 22, T.84N. R.1W. OF THE 5TH P.M. FOUND 1/2" REROD W/YELLOW CAP NO. 9647 PER SEC COR. CERT. DOC. NO. 2009 2456 ESTABLISHED NEW TIES.
- NW COR SW-NW, SEC. 22, T.84N. R.1W. OF THE 5TH P.M. PLACED 5/8" REROD W/ORANGE CAP NO. 15084, ESTABLISHED CORNER MIDWAY AND ONLINE BETWEEN THE WEST 1/4 AND THE NW COR.
- NE COR SW-NW, SEC. 22, T.84N. R.1W. OF THE 5TH P.M. PLACED 5/8" REROD W/ORANGE CAP NO. 15084, ESTABLISHED CORNER BY BREAKDOWN OF THE NW 1/4.
- NE COR NW-SW, SEC. 22, T.84N. R.1W. OF THE 5TH P.M. FOUND 1/2" REROD W/YELLOW CAP NO. 9647 PLAT BOOK P T PAGE 75, DOC. NO. 2009 2154

PLAN - VIEW

(Show a minimum of three reference ties to durable physical objects, relevant monuments and physical conditions that will enable recovery of the corner.)



DWG NO: 2011\STEWARD



I HEREBY CERTIFY THAT THIS LAND SURVEYING DOCUMENT WAS PREPARED AND THE RELATED SURVEY WORK WAS PERFORMED BY ME OR UNDER MY DIRECT PERSONAL SUPERVISION AND THAT I AM A DULY LICENSED LAND SURVEYOR UNDER THE LAWS OF THE STATE OF IOWA.
Michael J. Weber December 15, 2011
 MICHAEL J. WEBER (DATE)
 LICENSE NUMBER 15084
 MY LICENSE RENEWAL DATE IS DECEMBER 31, 2011
 SHEETS COVERED BY THIS SEAL: Sheet 1

List Corners to be Indexed			
Corner	Sec	Twp	Range
WEST 1/4 Cor.	22	84N	1W
NW COR. SW-NW	22	84N	1W
NE COR. SW-NW	22	84N	1W
NE COR. NW-SW	22	84N	1W