

2005 1708

FILED
RECORDERS OFFICE
JONES COUNTY IOWA

05 MAY 19 PM 12:16

MARIE KRUTZFIELD
RECORDER 7:00 Pd

PREPARED BY

STEPHEN MICHAEL BRAIN, BRAIN ENGINEERING, INC., 1540 MIDLAND COURT NE, CEDAR RAPIDS, IOWA PH. (319) 294-9424

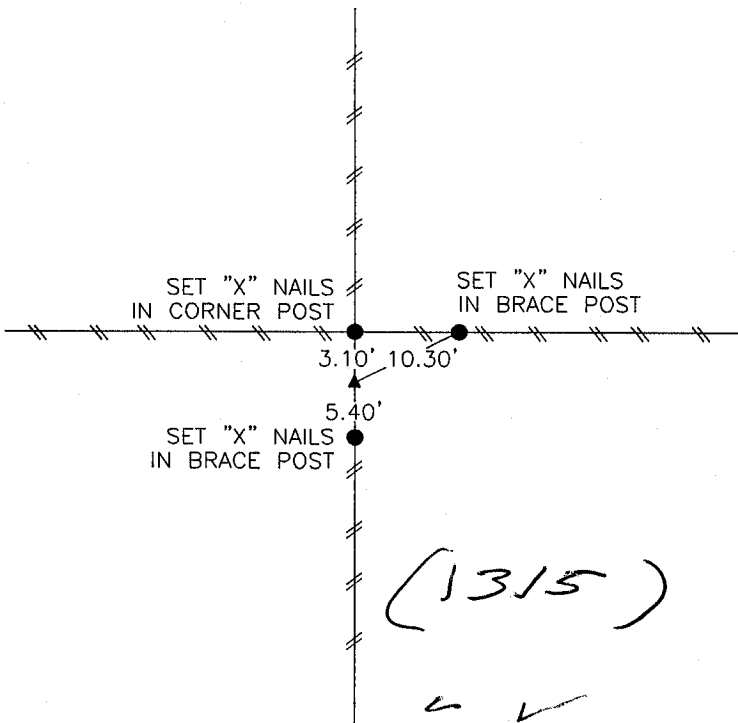
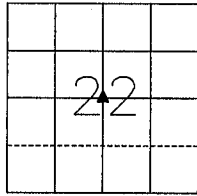
UNITED STATES PUBLIC LAND SURVEY CORNER CERTIFICATE

LAND SURVEY MONUMENTS SITUATED IN SECTION 22, TOWNSHIP 84 NORTH
RANGE 1 WEST OF THE 5TH P.M., _____ JONES _____ COUNTY, IOWA.

NO SCALE



CENTER



84/22 m - 05/805, tie

PREVIOUSLY RECORDED IN BOOK _____ PAGE _____

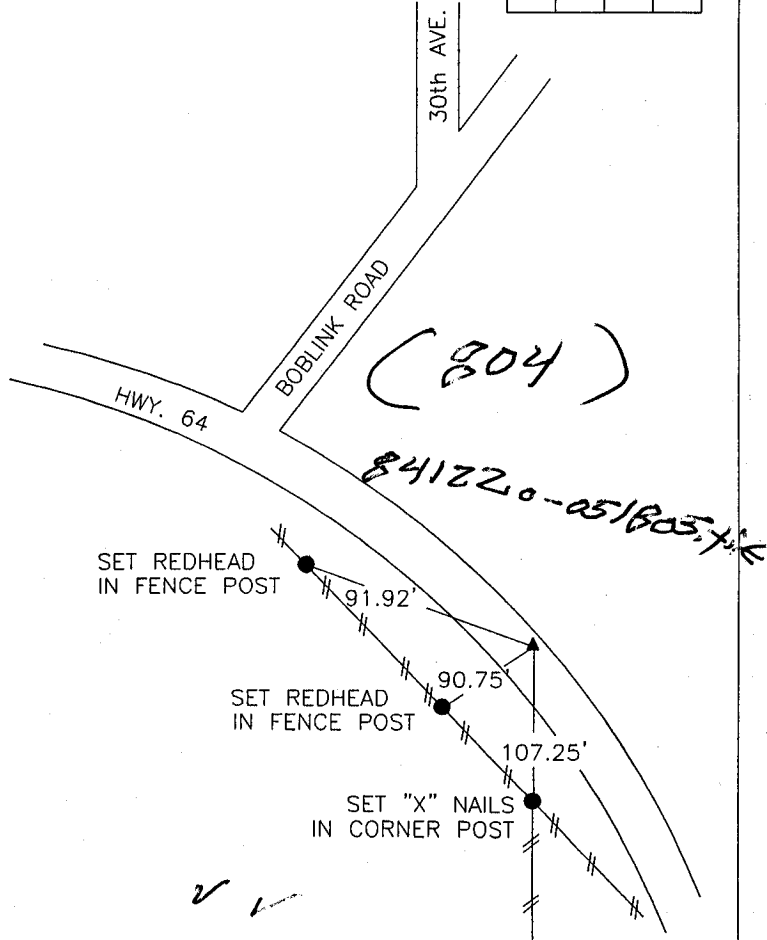
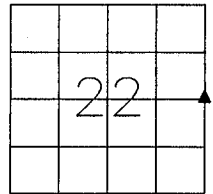
MONUMENT DESCRIPTION AND HOW ESTABLISHED _____

FOUND IDOT ALUMINUM MONUMENT WITH MAGNET INSERTS

NO SCALE



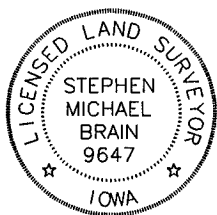
E 1/4 CORNER



PREVIOUSLY RECORDED IN BOOK _____ PAGE _____

MONUMENT DESCRIPTION AND HOW ESTABLISHED _____

FOUND 1/2" REBAR, FLUSH IN PAVEMENT



I hereby certify that this land surveying document and the related survey work was performed by me or under my direct personal supervision and that I am a duly licensed Land Surveyor under the laws of the State of Iowa.

Signed *Stephen Michael Brain* Date 5/18/05

Stephen Michael Brain, L.S.
My License Renewal Date is December 31, 2006
License Number 9647
Pages or sheets covered by this seal: 1/1

- A. THERE IS NO CERTIFICATE FOR THE CORNER ON FILE WITH THE RECORDER OF THE COUNTY IN WHICH THE CORNER IS LOCATED
- B. THE SURVEYOR IN RESPONSIBLE CHARGE OF THE LAND SURVEYING ACCEPTS A CORNER POSITION WHICH DIFFERS FROM THAT SHOWN IN THE PUBLIC RECORDS OF THE COUNTY IN WHICH THE CORNER IS LOCATED.
- C. THE CORNER MONUMENT IS REPLACED OR MODIFIED IN ANY WAY.
- D. THE REFERENCE TIES REFERRED TO IN AN EXISTING PUBLIC RECORD ARE NOT CORRECT.

CORNERS TO BE INDEXED

CORNER	SECTION	TOWNSHIP	RANGE
CENTER	22	T84N	R1 W
E 1/4 CORNER	22	T84N	R1 W

BRAIN ENGINEERING, INC.
1540 MIDLAND COURT NE
CEDAR RAPIDS, IOWA 52402
(319) 294-9424

H

336805-10

UNITED STATES PUBLIC LAND SURVEY CORNER CERTIFICATE OF

LAND SURVEY MONUMENTS SITUATED IN SECTION 23, TOWNSHIP 84 NORTH, RANGE 1 WEST, OF THE 5TH PRINCIPAL MERIDIAN JONES COUNTY IOWA.
PREVIOUSLY RECORDED IN DOES NOT APPLY IN COUNTY RECORDER'S OFFICE.

(book, page, document number, etc.)

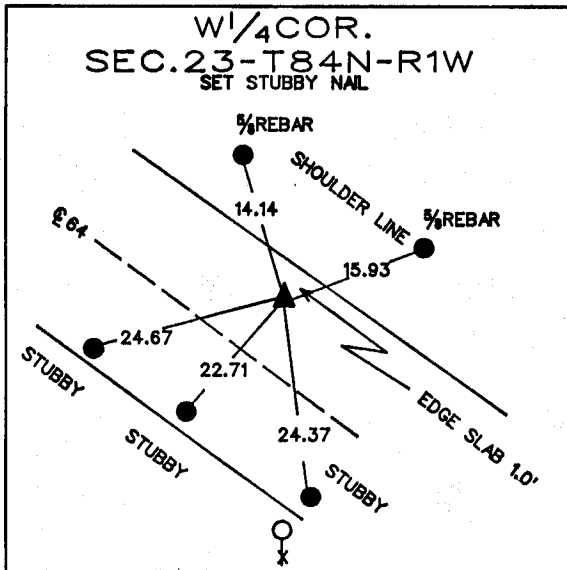
(Show reason for preparing this certificate, the evidence and detailed procedures used in establishing the corner positions and monumentation found or placed.)

MONUMENT DESCRIPTION AND REMARKS: REFERENCED AFTER ASPHALT PROJ.

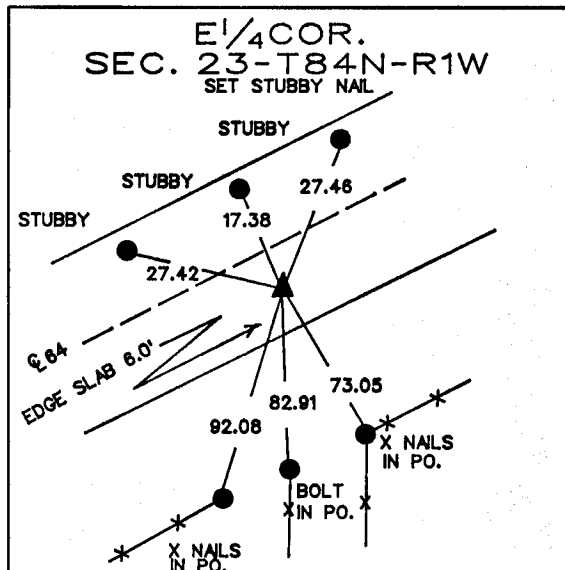
SET BY MANCHESTER CONST.

PLAN - VIEW

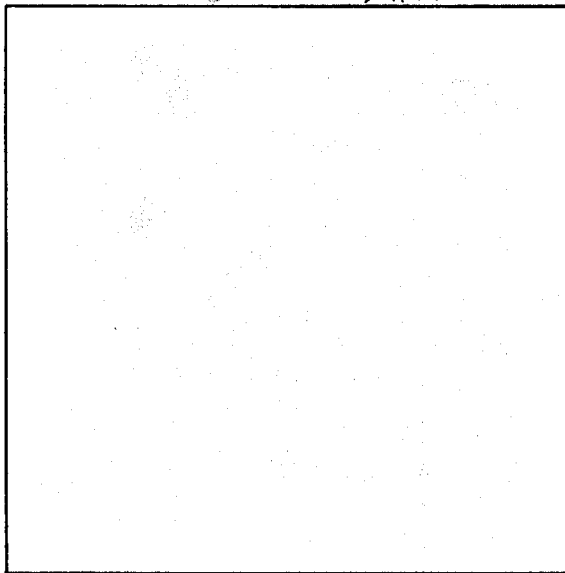
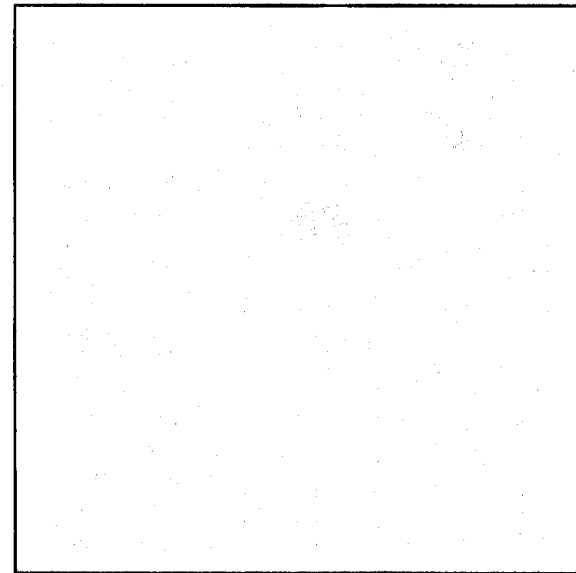
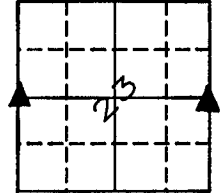
(Show a minimum of three reference ties to durable physical objects, relevant monuments and physical conditions that will enable recovery of the corner.)



2-2475 ON CARD E. COR SEC 22 M.S.



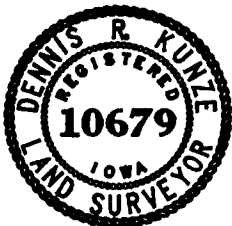
2-2475 ON CARD M.S.



I hereby certify that the survey work was completed and this certificate was prepared by me or under my direct personal supervision and that I am a duly registered land surveyor under the laws of the state of Iowa. My registration expires December 31, 1997.

Signature: Dennis R. Kunze
DENNIS R. KUNZE

Date: 2-5-1993 Reg. No. 10679



LAND CORNERS TO BE RECORDED

Corners	Section	Twp.	Range
E1/4	23	T84N	R1W
W1/4	23	T84N	R1W