

RECEIVED

JUL 10 2009

JONES COUNTY ENGINEER

PREPARED BY  
STEPHEN MICHAEL BRAIN, BRAIN ENGINEERING, INC., 1540 MIDLAND COURT NE, CEDAR RAPIDS, IOWA PH. (319) 294-9424

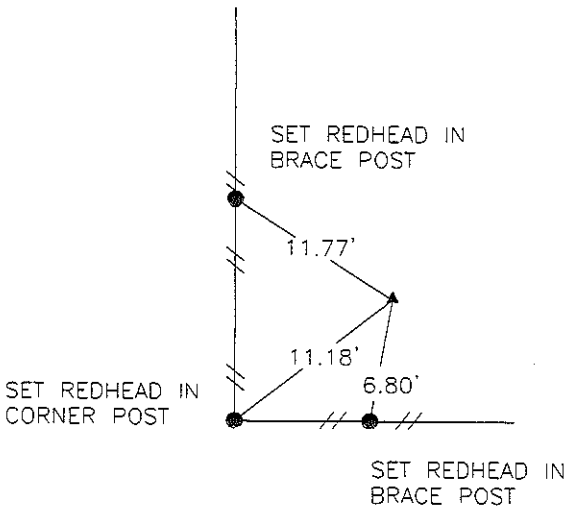
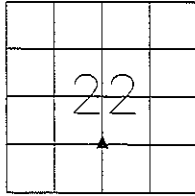
# UNITED STATES PUBLIC LAND SURVEY CORNER CERTIFICATE

LAND SURVEY MONUMENTS SITUATED IN SECTION 22, TOWNSHIP 84 NORTH  
RANGE 1 WEST OF THE 5TH P.M., JONES COUNTY, IOWA.

NO SCALE



NE CORNER SE 1/4 SW 1/4



PREVIOUSLY RECORDED IN BOOK \_\_\_\_\_ PAGE \_\_\_\_\_

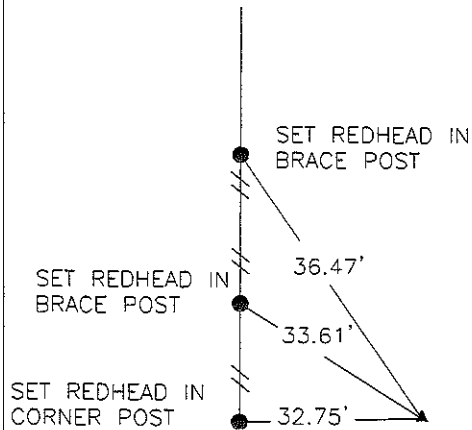
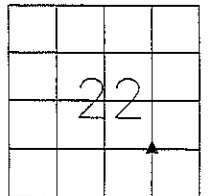
MONUMENT DESCRIPTION AND HOW ESTABLISHED \_\_\_\_\_

SET 1/2"REBAR W/YELLOW PLASTIC CAP #9647 AT MIDPOINT  
OF EAST LINE SW 1/4 SECTION 22

NO SCALE



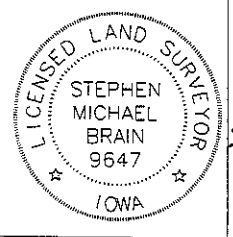
NE CORNER SW 1/4 SE 1/4



PREVIOUSLY RECORDED IN BOOK \_\_\_\_\_ PAGE \_\_\_\_\_

MONUMENT DESCRIPTION AND HOW ESTABLISHED \_\_\_\_\_

SET 1/2"REBAR W/YELLOW PLASTIC CAP #9647 AT  
INTERSECTION OF 16TH CORNERS IN SE 1/4 SECTION 22



I hereby certify that this land surveying document and the related survey work was performed by me or under my direct personal supervision and that I am a duly licensed Land Surveyor under the laws of the State of Iowa.  
Signed \_\_\_\_\_ Date 9/8/09  
Stephen Michael Brain, L.S.  
My License Renewal Date is December 31, 2010  
License Number 9647  
Pages or sheets covered by this seal: 1/1

- A.THERE IS NO CERTIFICATE FOR THE CORNER ON FILE WITH THE RECORDER OF THE COUNTY IN WHICH THE CORNER IS LOCATED
- B.THE SURVEYOR IN RESPONSIBLE CHARGE OF THE LAND SURVEYING ACCEPTS A CORNER POSITION WHICH DIFFERS FROM THAT SHOWN IN THE PUBLIC RECORDS OF THE COUNTY IN WHICH THE CORNER IS LOCATED.
- C.THE CORNER MONUMENT IS REPLACED OR MODIFIED IN ANY WAY.
- D.THE REFERENCE TIES REFERRED TO IN AN EXISTING PUBLIC RECORD ARE NOT CORRECT.

CORNERS TO BE INDEXED

CORNER	SECTION	TOWNSHIP	RANGE
NE CORNER	22	T84N	R1W
SE 1/4 SW 1/4			
NE CORNER	22	T84N	R1W
SW 1/4 SE 1/4			

**BRAIN ENGINEERING, INC.**  
1540 MIDLAND COURT NE  
CEDAR RAPIDS, IOWA 52402  
(319) 294-9424

407409-10  
MAB 7/10/09