

2005 1709

FILED
RECORDERS OFFICE
JONES COUNTY IOWA

05 MAY 19 PM 12:18

MARIE KRUTZFIELD
RECORDER 7.60 Pd

PREPARED BY

STEPHEN MICHAEL BRAIN, BRAIN ENGINEERING, INC., 1540 MIDLAND COURT NE, CEDAR RAPIDS, IOWA PH. (319) 294-9424

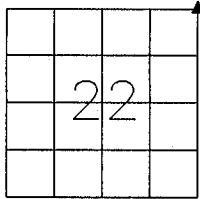
UNITED STATES PUBLIC LAND SURVEY CORNER CERTIFICATE

LAND SURVEY MONUMENTS SITUATED IN SECTION 22, TOWNSHIP 84 NORTH
RANGE 1 WEST OF THE 5TH P.M., JONES COUNTY, IOWA.

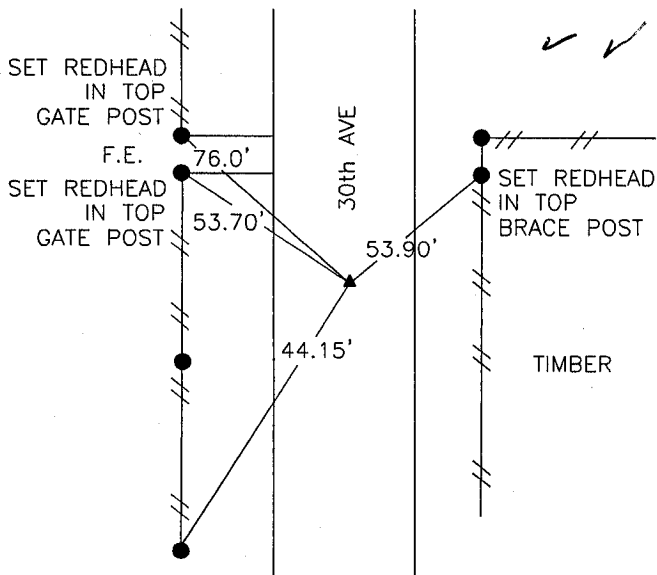
NO SCALE



NE CORNER



(1314)



84122e-051805, tie

PREVIOUSLY RECORDED IN BOOK _____ PAGE _____

MONUMENT DESCRIPTION AND HOW ESTABLISHED _____

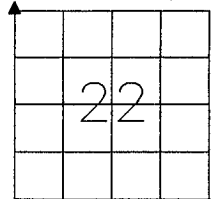
FOUND IDOT ALUMINUM MONUMENT WITH MAGNET INSERTS

4" BELOW SURFACE.

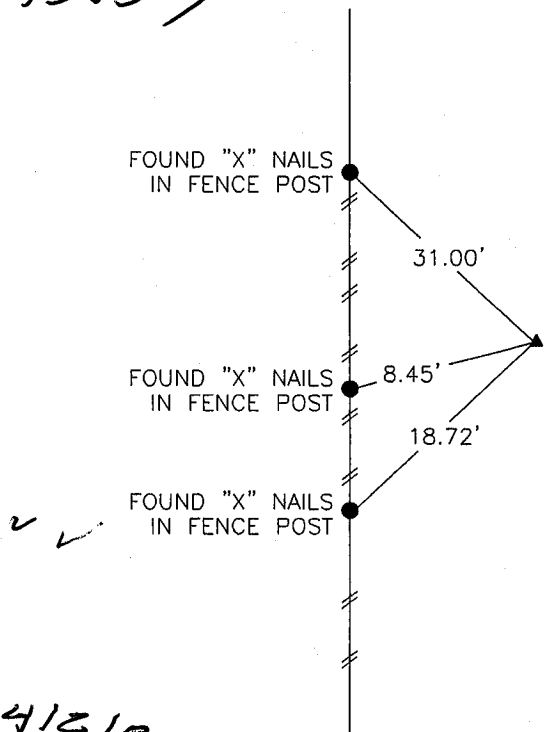
NO SCALE



NW CORNER



(1313)

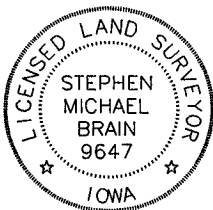


84121e-051805, tie

PREVIOUSLY RECORDED IN BOOK _____ PAGE _____

MONUMENT DESCRIPTION AND HOW ESTABLISHED _____

FOUND IDOT ALUMINUM MONUMENT WITH MAGNET INSERTS



I hereby certify that this land surveying document and the related survey work was performed by me or under my direct personal supervision and that I am a duly licensed Land Surveyor under the laws of the State of Iowa.

Signed *Stephen Michael Brain* Date *5/18/05*

Stephen Michael Brain, L.S.
My License Renewal Date is December 31, 2006
License Number 9647
Pages or sheets covered by this seal: 1/1

- A. THERE IS NO CERTIFICATE FOR THE CORNER ON FILE WITH THE RECORDER OF THE COUNTY IN WHICH THE CORNER IS LOCATED
- B. THE SURVEYOR IN RESPONSIBLE CHARGE OF THE LAND SURVEYING ACCEPTS A CORNER POSITION WHICH DIFFERS FROM THAT SHOWN IN THE PUBLIC RECORDS OF THE COUNTY IN WHICH THE CORNER IS LOCATED.
- C. THE CORNER MONUMENT IS REPLACED OR MODIFIED IN ANY WAY.
- D. THE REFERENCE TIES REFERRED TO IN AN EXISTING PUBLIC RECORD ARE NOT CORRECT.

CORNERS TO BE INDEXED			
CORNER	SECTION	TOWNSHIP	RANGE
NE CORNER	22	T84N	R1 W
NW CORNER	22	T84N	R1 W

BRAIN ENGINEERING, INC.
1540 MIDLAND COURT NE
CEDAR RAPIDS, IOWA 52402
(319) 294-9424

I

336805-10

THIS IS NOT A CERTIFICATION

JONES COUNTY ENGINEER'S OFFICE, 19501 HWY. 64, ANAMOSA, IOWA, 52205 (319)462-3785

UNITED STATES PUBLIC LAND SURVEY CORNER CERTIFICATE

LAND SURVEY MONUMENTS SITUATED IN SECTION 22, TOWNSHIP 84
NORTH, RANGE 1 WEST OF THE 5TH P.M., JONES COUNTY, IOWA

CORNERS TO BE INDEXED

CORNER NORTHEAST	SECTION 22	TOWNSHIP 84N	RANGE 1W
---------------------	---------------	-----------------	-------------

OFFICE FILE NO. 84122e_011304.jpg

1314

REF:
DOT F-64-1(8)
9-9-76
FROM INDEX CARD

PREVIOUSLY RECORDED IN BOOK _____, PAGE _____
MONUMENT DESCRIPTION AND HOW ESTABLISHED SET

D.O.T. MONUMENT 10" BELOW SURFACE. NORTHEAST CORNER SECTION 22, TOWNSHIP 84 NORTH, RANGE 1 WEST OF THE 5TH PRINCIPAL MERIDIAN, JONES COUNTY, IOWA. REFERENCE TIES AS INDICATED.

CORNERS TO BE INDEXED

CORNER CENTER	SECTION 22	TOWNSHIP 84N	RANGE 1W
------------------	---------------	-----------------	-------------

OFFICE FILE NO. 992+72 CL OLD HIGH. #64
84122m_011304.jpg

1315

REF:
DOT F-64-1(8)
9-9-76
FROM INDEX CARD

PREVIOUSLY RECORDED IN BOOK _____, PAGE _____
MONUMENT DESCRIPTION AND HOW ESTABLISHED SET D.O.T. MONUMENT PER 1929 CONSTRUCTION PLANS. SET MONUMENT FLUSH WITH EXISTING SURFACE. CENTER OF SECTION 22, TOWNSHIP 84 NORTH, RANGE 1 WEST OF THE 5TH PRINCIPAL MERIDIAN, JONES COUNTY, IOWA. TIES AS INDICATED.

CORNERS TO BE INDEXED

CORNER	SECTION	TOWNSHIP	RANGE
--------	---------	----------	-------

OFFICE FILE NO. _____

NO SCALE

PREVIOUSLY RECORDED IN BOOK _____, PAGE _____
MONUMENT DESCRIPTION AND HOW ESTABLISHED _____

CORNERS TO BE INDEXED

CORNER	SECTION	TOWNSHIP	RANGE
--------	---------	----------	-------

OFFICE FILE NO. _____

NO SCALE

PREVIOUSLY RECORDED IN BOOK _____, PAGE _____
MONUMENT DESCRIPTION AND HOW ESTABLISHED _____

~~I hereby declare that this plat, survey or report was made by me or under my direct personal supervision and that I am a duly registered Land Surveyor under the laws of the State of Iowa.~~

Signed: _____

SEAL

JONES COUNTY
ENGINEER'S OFFICE

19501 HWY. 64,
ANAMOSA, IOWA,
52205 (319)462-3785