

UNITED STATES PUBLIC LAND SURVEY CORNER CERTIFICATE OF

LAND SURVEY MONUMENTS SITUATED IN SECTION 23, TOWNSHIP 84 NORTH, RANGE 1 WEST, OF THE 5TH PRINCIPAL MERIDIAN JONES COUNTY IOWA.
PREVIOUSLY RECORDED IN DOES NOT APPLY IN COUNTY RECORDER'S OFFICE.

(book, page, document number, etc.)

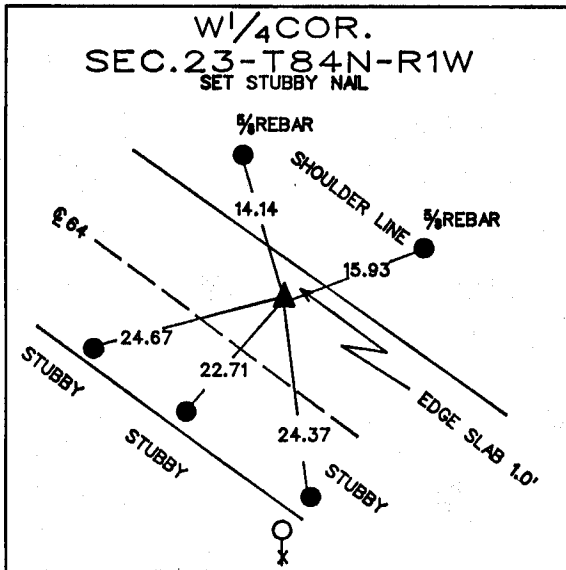
(Show reason for preparing this certificate, the evidence and detailed procedures used in establishing the corner positions and monumentation found or placed.)

MONUMENT DESCRIPTION AND REMARKS: REFERENCED AFTER ASPHALT PROJ.

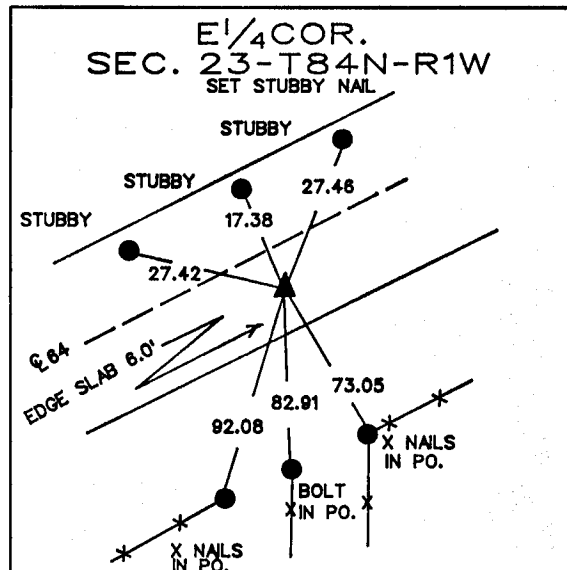
SET BY MANCHESTER CONST.

PLAN - VIEW

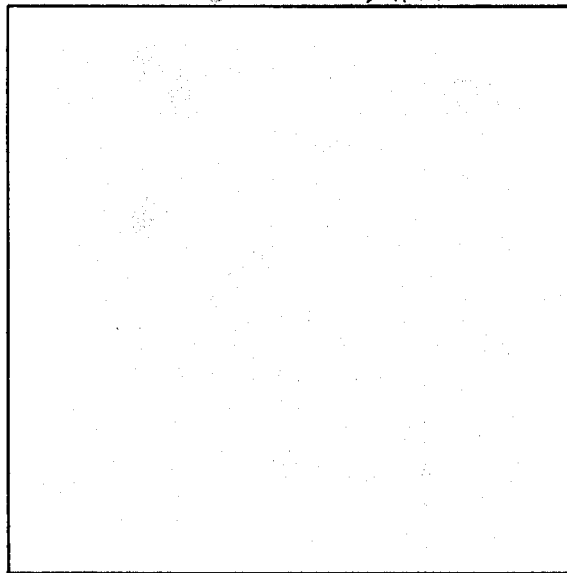
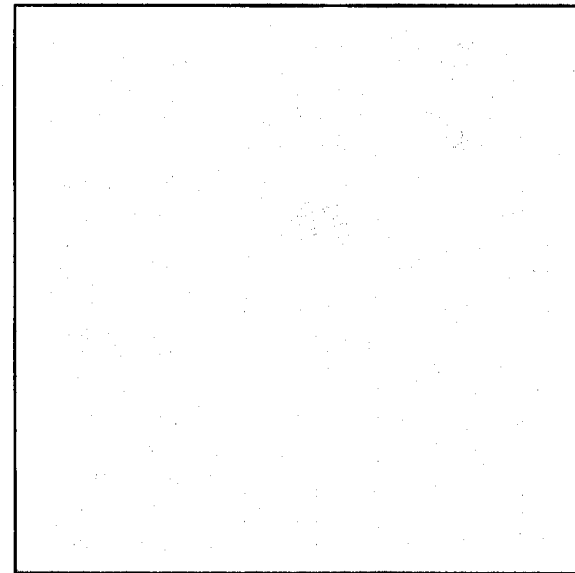
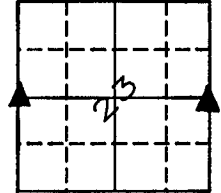
(Show a minimum of three reference ties to durable physical objects, relevant monuments and physical conditions that will enable recovery of the corner.)



2-2473 ON CARD E. COR SEC 22 M.S.



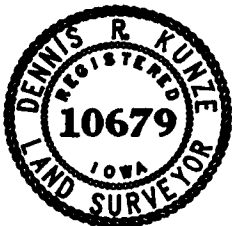
2-2473 ON CARD M.S.



I hereby certify that the survey work was completed and this certificate was prepared by me or under my direct personal supervision and that I am a duly registered land surveyor under the laws of the state of Iowa. My registration expires December 31, 1997.

Signature: Dennis R. Kunze
DENNIS R. KUNZE

Date: 2-5-1993 Reg. No. 10679



LAND CORNERS TO BE RECORDED

Corners	Section	Twp.	Range
E1/4	23	T84N	R1W
W1/4	23	T84N	R1W