

# THIS IS NOT A CERTIFICATION

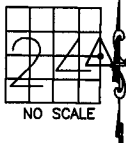
JONES COUNTY ENGINEER'S OFFICE, 19501 HWY. 64, ANAMOSA, IOWA, 52205 (319)462-3785

## UNITED STATES PUBLIC LAND SURVEY CORNER CERTIFICATE

LAND SURVEY MONUMENTS SITUATED IN SECTION 24, TOWNSHIP 84  
NORTH, RANGE 1 WEST OF THE 5TH P.M., JONES COUNTY, IOWA

### CORNERS TO BE INDEXED

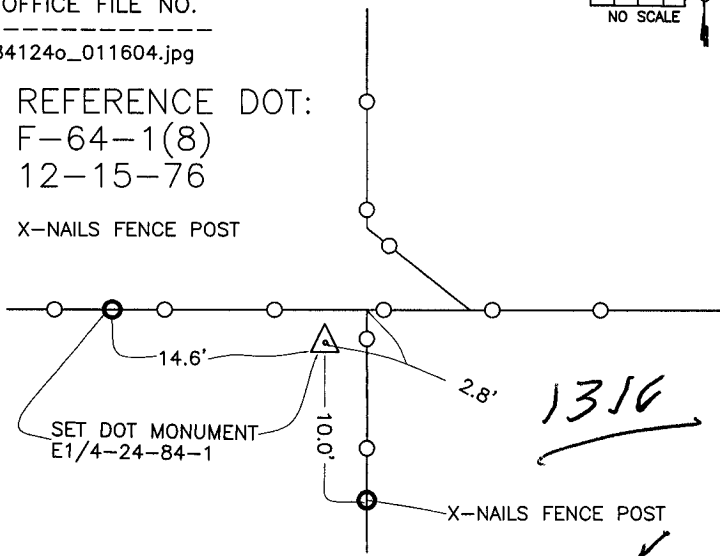
CORNER SECTION TOWNSHIP RANGE  
E-QUARTER 24 84N 1W  
OFFICE FILE NO.



84124o\_011604.jpg

REFERENCE DOT:  
F-64-1(8)  
12-15-76

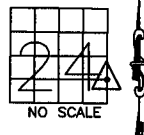
X-NAILS FENCE POST



PREVIOUSLY RECORDED IN BOOK \_\_\_\_\_, PAGE \_\_\_\_\_  
MONUMENT DESCRIPTION AND HOW ESTABLISHED SET  
DOT MONUMENT FLUSH WITH SURFACE, 2.4' SOUTHEAST OF CORNER POST. TIES AS INDICATED. EAST QUARTER CORNER SECTION 24, TOWNSHIP 84 NORTH, RANGE 1 WEST OF THE 5TH PRINCIPAL MERIDIAN, JONES COUNTY, IOWA.

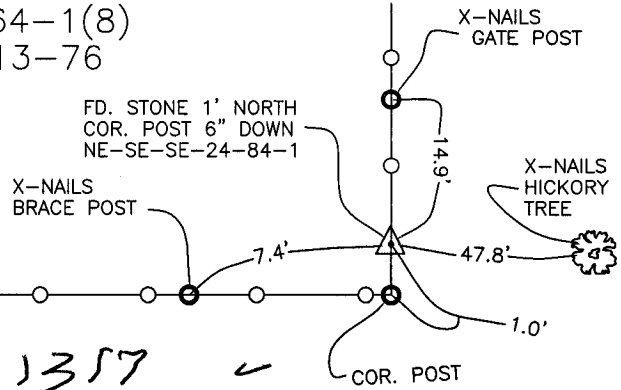
### CORNERS TO BE INDEXED

CORNER SECTION TOWNSHIP RANGE  
NE-SE-SE- 24 84N 1W  
OFFICE FILE NO.



84124t\_011604.jpg

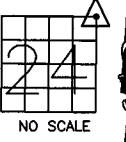
REFERENCE DOT:  
F-64-1(8)  
9-13-76



PREVIOUSLY RECORDED IN BOOK \_\_\_\_\_, PAGE \_\_\_\_\_  
MONUMENT DESCRIPTION AND HOW ESTABLISHED FOUND  
4"X10"12" STONE 6" BELOW SURFACE, 1.0' NORTH OF CORNER POST. NORTHEAST CORNER OF THE SOUTHEAST QUARTER OF THE SOUTHEAST QUARTER OF SECTION 24, TOWNSHIP 84 NORTH, RANGE 1 WEST OF THE 5TH PRINCIPAL MERIDIAN, JONES COUNTY, IOWA. TIES AS INDICATED.

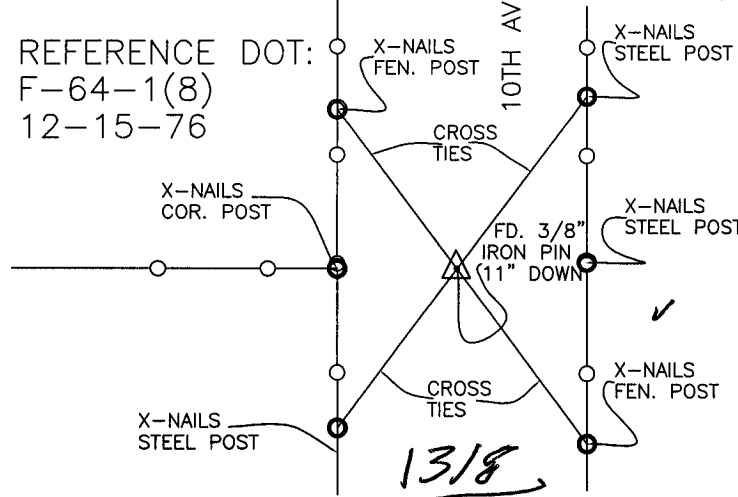
### CORNERS TO BE INDEXED

CORNER SECTION TOWNSHIP RANGE  
NORTHEAST 24 84N 1W  
OFFICE FILE NO.



84124e\_011604.jpg

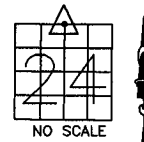
REFERENCE DOT:  
F-64-1(8)  
12-15-76



PREVIOUSLY RECORDED IN BOOK \_\_\_\_\_, PAGE \_\_\_\_\_  
MONUMENT DESCRIPTION AND HOW ESTABLISHED FOUND  
3/8" IRON PIN 11" BELOW SURFACE. SET CROSS-TIES AS INDICATED. NORTHEAST CORNER OF SECTION 24, TOWNSHIP 84 NORTH, RANGE 1 WEST OF THE 5TH PRINCIPAL MERIDIAN, JONES COUNTY, IOWA.

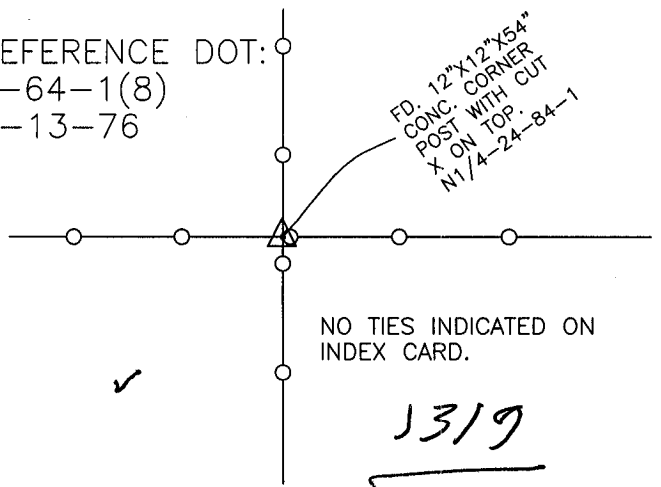
### CORNERS TO BE INDEXED

CORNER SECTION TOWNSHIP RANGE  
N-QUARTER 24 84N 1W  
OFFICE FILE NO.



84124c\_013104.jpg

REFERENCE DOT:  
F-64-1(8)  
9-13-76



PREVIOUSLY RECORDED IN BOOK \_\_\_\_\_, PAGE \_\_\_\_\_  
MONUMENT DESCRIPTION AND HOW ESTABLISHED FOUND  
12"X12"X54" CONCRETE CORNER POST WITH CUT X-ON TOP. NORTH QUARTER CORNER SECTION 24, TOWNSHIP 84 NORTH, RANGE 1 WEST OF THE 5TH PRINCIPAL MERIDIAN, JONES COUNTY, IOWA.

~~I hereby declare that this plat, survey or report was made by me or under my direct personal supervision and that I am a duly registered Land Surveyor under the laws of the State of Iowa.~~

Signed: \_\_\_\_\_

SEAL

JONES COUNTY  
ENGINEER'S OFFICE

19501 HWY. 64,  
ANAMOSA, IOWA,  
52205 (319)462-3785