

THIS IS NOT A CERTIFICATION

JONES COUNTY ENGINEER'S OFFICE, 19501 HWY. 64, ANAMOSA, IOWA, 52205 (319)462-3785

UNITED STATES PUBLIC LAND SURVEY CORNER CERTIFICATE

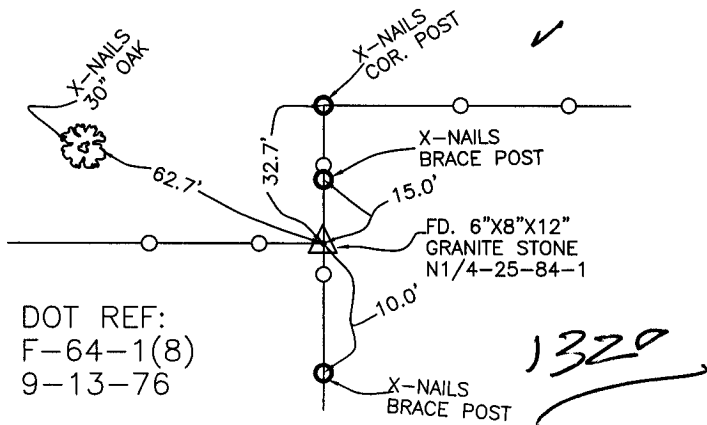
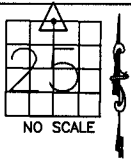
LAND SURVEY MONUMENTS SITUATED IN SECTION 25, TOWNSHIP 84
NORTH, RANGE 1 WEST OF THE 5TH P.M., JONES COUNTY, IOWA

CORNERS TO BE INDEXED

CORNER SECTION TOWNSHIP RANGE
N-QUARTER 25 84N 1W

OFFICE FILE NO.

84125c_013104.jpg



DOT REF:
F-64-1(8)
9-13-76

1320

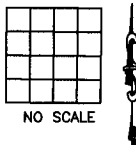
PREVIOUSLY RECORDED IN BOOK _____, PAGE _____
MONUMENT DESCRIPTION AND HOW ESTABLISHED FOUND _____
6"X8"X12" GRANITE STONE 12' BELOW SURFACE. NORTH QUARTER
CORNER, SECTION 25, TOWNSHIP 84 NORTH, RANGE 1 WEST OF THE
5TH PRINCIPAL MERIDIAN, JONES COUNTY, IOWA.

REFERENCE POINTS AS INDICATED.

CORNERS TO BE INDEXED

CORNER SECTION TOWNSHIP RANGE

OFFICE FILE NO.

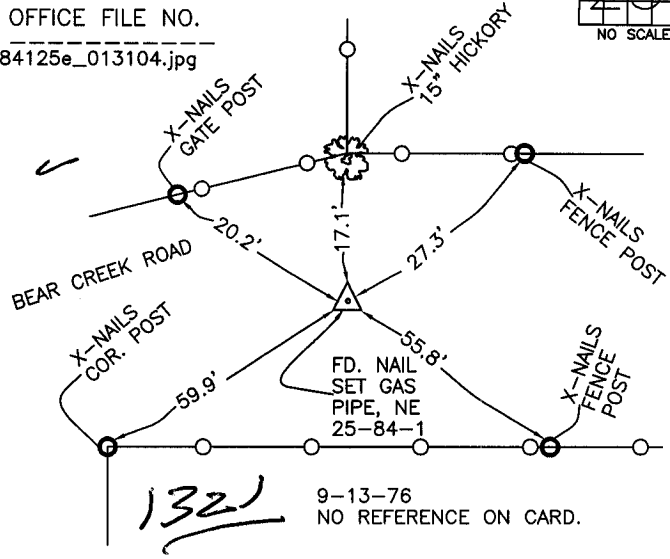
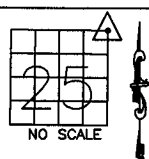


CORNERS TO BE INDEXED

CORNER SECTION TOWNSHIP RANGE
NORTHEAST 25 84N 1W

OFFICE FILE NO.

84125e_013104.jpg



1321

9-13-76
NO REFERENCE ON CARD.

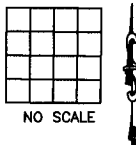
PREVIOUSLY RECORDED IN BOOK _____, PAGE _____
MONUMENT DESCRIPTION AND HOW ESTABLISHED FOUND _____

NAIL, SET GAS PIPE 2" BELOW SURFACE. REFERENCE POINTS AS
INDICATED. NORTHEAST CORNER OF SECTION 25, TOWNSHIP 84 NORTH,
RANGE 1 WEST OF THE 5TH PRINCIPAL MERIDIAN, JONES COUNTY,
IOWA.

CORNERS TO BE INDEXED

CORNER SECTION TOWNSHIP RANGE

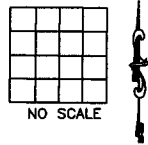
OFFICE FILE NO.



CORNERS TO BE INDEXED

CORNER SECTION TOWNSHIP RANGE

OFFICE FILE NO.



PREVIOUSLY RECORDED IN BOOK _____, PAGE _____
MONUMENT DESCRIPTION AND HOW ESTABLISHED _____

PREVIOUSLY RECORDED IN BOOK _____, PAGE _____
MONUMENT DESCRIPTION AND HOW ESTABLISHED _____

~~I hereby declare that this plat, survey or report was made by me or under my direct personal supervision and that I am a duly registered Land Surveyor under the laws of the State of Iowa.~~

Signed: _____

SEAL

JONES COUNTY
ENGINEER'S OFFICE

19501 HWY. 64,
ANAMOSA, IOWA,
52205 (319)462-3785