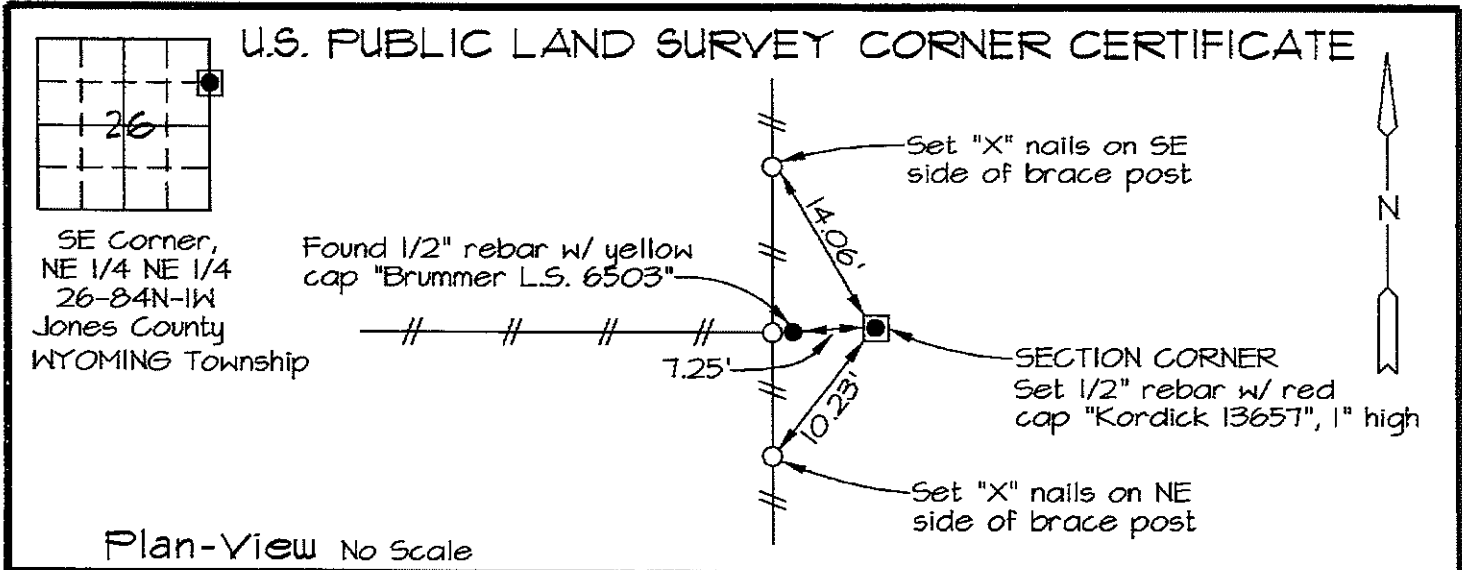


Marie Krutzfield, Recorder  
 Jones County, Iowa

Prepared by: Richard M. Kordick, P.E., L.S., 120 East Main, Suite D, Anamosa, IA 52205 Phone: (319) 462-4498



Plan-View No Scale

Reason for corner tie:

■ A) There is no certificate for the corner on file with the recorder.

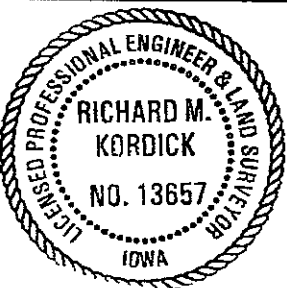
Research at the recorder's office, auditor's office, and engineer's office revealed the following: A 1/2" rebar w/ yellow cap "Brummer L.S. 6503" was found at an existing corner post near the SE Corner, NE 1/4 NE 1/4 of Section 26-84-1. This rebar was not on-line from the NE Corner, Section 26-84-1 to the E 1/4 Corner, Section 26-84-13. No Corner Tie Certificate of record or plat of record was found at the Jones County Courthouse for this rebar. I personally contacted Mr. F.R. Brummer, LS 6503 and discussed this issue with him. Mr. Brummer stated that he had done a field survey in this location in the fall of 1979. Mr. Brummer was kind enough to allow me to copy his field notes and 2 plats which referenced this rebar. The plats were both signed and dated November 8, 1979. Neither plat was recorded as was common during that time. The field notes indicated that Mr. Brummer set this rebar equi-distance and on-line from the NE Corner to the E 1/4 Corner. At the NE Corner, Mr. Brummer's field notes state that he found and used a "Rock and old readhead in Fence Post" at this corner. Based on this description, I believe this to be the same stone that I found and used at the NE Corner. At the E 1/4 Corner, Mr. Brummer's field notes stated "E 1/4 Corner, Set 3/4" pipe in shoulder of road, 33' west of Fence Corner". During my field search, no pipe was found. A 1/2" rebar w/ red cap "Crapnell No. 10135" was found at the E 1/4 Corner as per corner certificate in Recorder's Bk. 316 - Pg. 89 and has been used by Clarence Walton, LS 11310 on a plat recorded in Recorder's Document #2001-1636. Mr. Crapnell referenced this existing E 1/4 Corner location in a plat recorded in Recorder's Bk. 1 - Pg. 7. As per Mr. Brummer's field notes, Mr. Brummer's E 1/4 Corner location lies approximately 15' west of the existing accepted E 1/4 Corner location. Given this information, a 1/2" rebar w/ red cap "Kordick 13657" was set equi-distance and on-line from a stone found at the NE Corner to a 1/2" rebar w/ red cap "Crapnell 10135" found at the E 1/4 Corner.

Field search performed was as follows:

Field search was performed with a metal detector, excavation and probing.

Monument found or set:

A 1/2" rebar with red cap "Kordick 13657" was set, equidistance on-line from the E 1/4 Corner to the NE Corner.



I hereby certify that this land surveying document was prepared and the related survey work was performed by me or under my direct personal supervision and that I am a duly licensed Land Surveyor under the laws of the State of Iowa.

*Richard M. Kordick* 4/19/2007  
 Richard M. Kordick date  
 License number 13657

My license renewal date is December 31, 2007.  
 Pages or sheets covered by this seal: 1 of 1

LEGEND:

- Section Corner as noted
- ⌘ Power Pole
- Section line
- - - Centerline
- ||| Existing Fence
- ( ) Recorded Dist.

**Kordick Surveying & Engineering**  
 120 East Main, Suite D  
 Anamosa, Iowa 52205  
 (319) 462-4498

U.S. Public Land  
 Survey Corner Certificate

Project: Plat of Survey  
 RETRACEMENT  
 Proprietor: Lloyd E. Van Dorn and  
 Marjorie A. Van Dorn

Field BK  
 06085  
 Date  
 4-19-07  
 Job No.  
 06085  
 Sheet  
 1 of 1